

2018

Bothy Threads



SANTORO
LONDON
gorjuss®

The Home of Happy Stitching!



Unit 2b, Lakeland Business Park,
Lamplugh Road, Cockermouth, Cumbria CA13 0QT
Tel/Fax: 01900 828844

Web: www.bothythreads.com ♥ Email: info@bothythreads.com
[facebook.com/bothythreads](https://www.facebook.com/bothythreads)

Welcome to Bothy Threads...

2017 was our busiest year ever in the Bothy!

Highlights included:

- The runaway success of Hannah Dale's wildlife designs with our exclusive speckle printed Aida
- Launching new ranges based on the artwork of Beryl Cook and Rosina Wachtmeister
- Acquiring the business interests of Derwentwater Designs including Rose Swalwell's scenic designs and sales of Zweigart fabric, John James' British made sewing needles and Excel Edge Bexfield scissors
- The launch of our new website, which we hope you are finding easier to use!

Thanks to our talented artists and you, our customers, we are now one of the UK's largest manufacturers of sewing kits.

Bothy Threads' counted cross stitch kits use Zweigart fabrics and pre-sorted stranded cottons. They are embellished with special effect threads, beads, buttons and sequins. Comprehensive instructions and clear stitch diagrams are included in the kits. Our tapestry kits contain beautiful colour printed canvases and tapestry wools.

During 2018 we will be launching more designs from Hannah Dale! We will also have new Gorjuss designs and a range based on Lavinia Stamps' magical fairy silhouettes, both with colour printed backgrounds. We are planning to build a new Bothy to create more room for our ever growing range. Look out for our quarterly new product releases!



Top row - left to right: Chrissie W, Linda, Sarah, Chrissie R and Julie.

Bottom Row, left to right: Laura, John, Kate & Trish.

Contents

Counted Cross Stitch Kits

Hannah Dale	Page 3
Enchanted and Fairy Tales	Page 6
Love by Kim Anderson	Page 8
Beryl Cook	Page 10
Rosina Wachtmeister	Page 10
Santoro®'s Gorjuss™	Page 11
Moina Blackburn's Samplers	Page 14
Blackwork by Eleanor Friston	Page 16
Margaret Sherry	Page 17
Samplers	Page 18
Birth Samplers	Page 19
Cut Thru' by Amanda Loveseed	Page 20
Cut Thru' and Sew Dinky by Amanda Loveseed	Page 21
Thelwell	Page 22
Birds by Madeleine Floyd	Page 22
Animals	Page 23
Hobbies	Page 24
Friends and Family	Page 25
Dictionary of ... by Helen Smith	Page 26
Fun by Julia Rigby	Page 27
Row of ... by June Armstrong	Page 28
Little Jem by Nicola Mason	Page 29
Susan Wheeler's Mouse!	Page 29
Funky by Caroline Rose	Page 30
Slightly Dotty by Emily Johnston	Page 30
Bouquet by Laura Ann	Page 30
Beside the Seaside by Janet Bell	Page 31
New England Homes by Sally Swannell	Page 31
Christmas	Page 32
Christmas Cards	Page 33
Vintage Christmas by Jason Bennion	Page 33
Historical by Pete Smith	Page 34
London by Julia Rigby	Page 34
L.S. Lowry and Lowry Style	Page 35
William Morris	Page 35

Tapestry Kits

William Morris	Page 36
Suzy Taylor	Page 36
L.S. Lowry and Lowry Style	Page 36

..... The Home of Happy Stitching

Hannah Dale

14hpi Counted Cross Stitch



Our range of Hannah Dale designs, using 14hpi Aida printed with speckles to recreate her original artwork.



Bright Eyes
ref XHD1 26x26cm



Lovely Mum
ref XHD2 26x26cm



First Kiss
ref XHD3 26x26cm



Sweet Tweet
ref XHD4 26x26cm



Jolly Robin
ref XHD5 26x26cm



Ducks and Daffs
ref XHD6 26x26cm



The Lookout
ref XHD7 26x26cm



Amongst The Foxgloves
ref XHD8 26x26cm



Highland Heathers
ref XHD9 26x26cm

Hannah Dale
14hpi Counted
Cross Stitch



Collie
ref XHD10 26x26cm



Pug ref XHD11 26x26cm



Beagle
ref XHD12 26x26cm



The Nutcracker
ref XHD14 26x26cm



Scottie ref XHD13 26x26cm



Bath Time
ref XHD16 26x26cm



Curious Hen
ref XHD17 26x26cm



Awakening ref XHD15 26x26cm



Lettuce Be Friends
ref XHD19 26x26cm



Glad Tidings ref XHD18 26x26cm

Hannah Dale
14hpi Counted
Cross Stitch

Wrendale
DESIGNS
by Hannah Dale



Three Of A Kind
ref XHD20 26x26cm



Toucan Of My Affection
ref XHD21 26x26cm



Lord Of The Woods
ref XHD22 26x26cm



King Of The River
ref XHD23 26x26cm



Parrot On Parade
ref XHD26 26x26cm



Pink Ladies
ref XHD24 26x26cm



Practically Perfect
ref XHD25 26x26cm



Love Is
ref XHD29 26x26cm



Age Is Irrelephant
ref XHD27 26x26cm



Bamboozled
ref XHD28 26x26cm

Enchanted

14hpi Counted Cross Stitch by Bothy Designs with exclusive full colour printed backgrounds



Mermaid Cove
ref XE1P 26x36cm



Dragon Castle
ref XE2P 26x36cm



Fairy Glade
ref XE3P 26x36cm



Pumpkin House
ref XE4P 26x36cm

Fairy Tales

14hpi Counted Cross Stitch by Deborah Street of Bramble Crafts with exclusive full colour printed backgrounds



Sleeping Beauty
ref XFT1P 26x36cm



Hansel and Gretel
ref XFT3P 26x36cm



Alice in Wonderland
ref XFT4P 26x36cm



Mad Hatter's Tea Party
ref XFT5P 26x36cm

Fairy Tales

14hpi Counted Cross Stitch by Deborah Street of Bramble Crafts with exclusive full colour printed backgrounds



Peter Pan
ref XFT6P 26x36cm



Wizard of Oz
ref XFT7P 26x36cm



Thumbelina
ref XFT8P 26x36cm



Beauty and the Beast
ref XFT9P 26x36cm



I'm Late...
ref XFT10P 26x36cm



Painting the Roses Red
ref XFT11P 26x36cm



Snow White
ref XFT12P 26x36cm



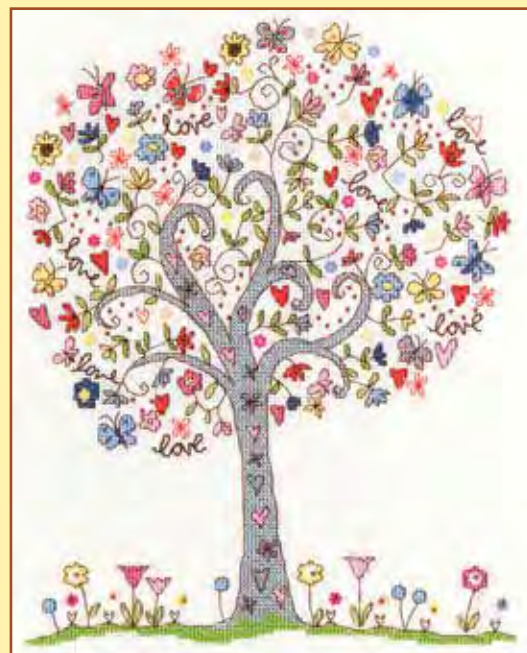
Cinderella
ref XFT13P 26x36cm

Love

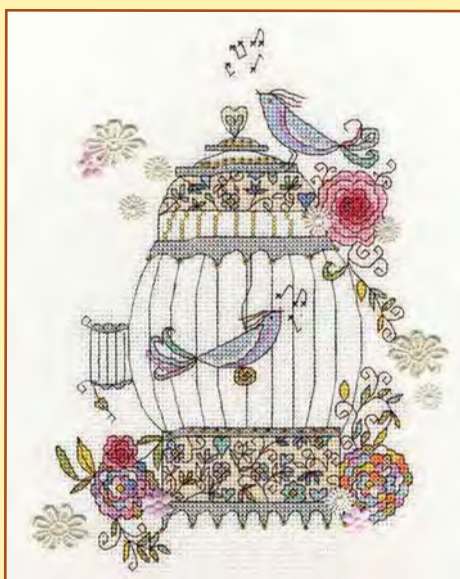
14hpi Counted Cross Stitch by Kim Anderson



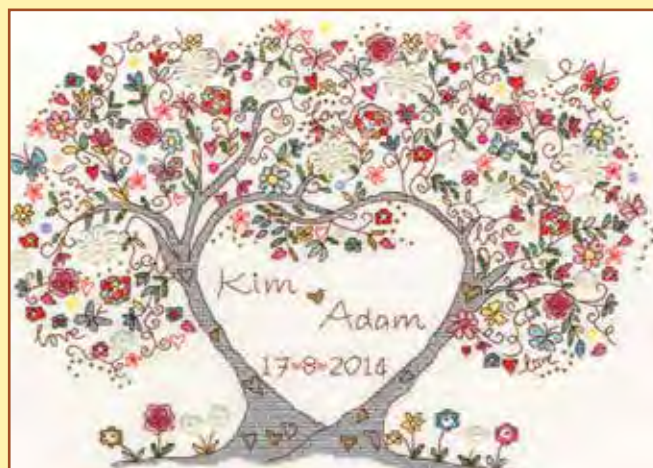
Love Heart
ref XKA1 24x26cm



Love Tree
ref XKA2 24x30cm



Love Birds
ref XKA3 20x25cm



Love Blossoms
ref XKA4 34x26cm



Love Elly
ref XKA5 24x16cm



Love Woo
ref XKA6 26x20cm

Love

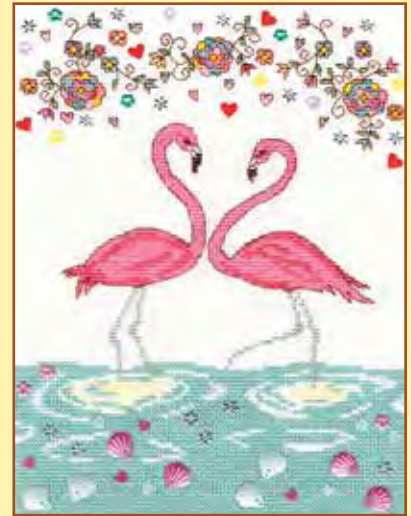
14hpi Counted Cross Stitch by Kim Anderson



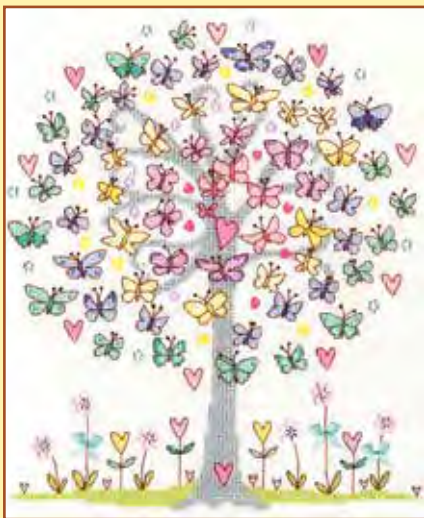
Love Baby Girl
ref XKA7 22x28cm



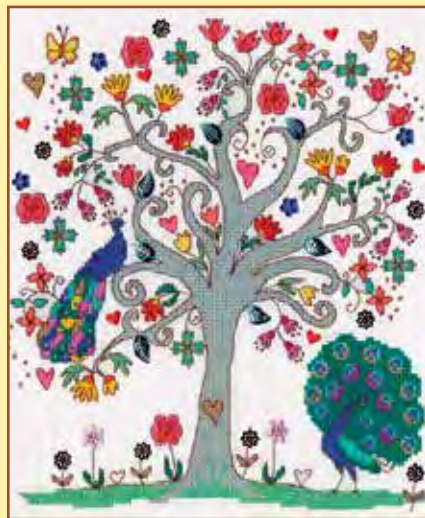
Love Baby Boy
ref XKA8 22x28cm



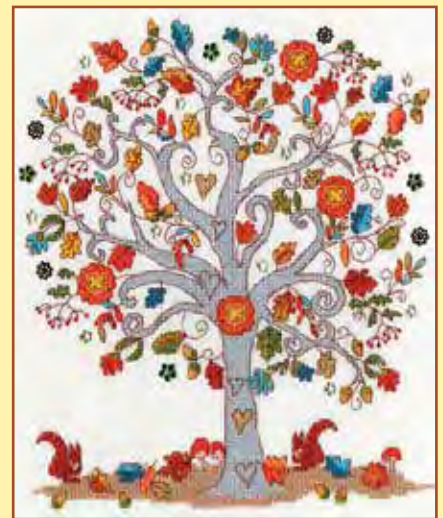
Love Flamingo
ref XKA9 18x26cm



Love Spring
ref XKA10 23x26cm



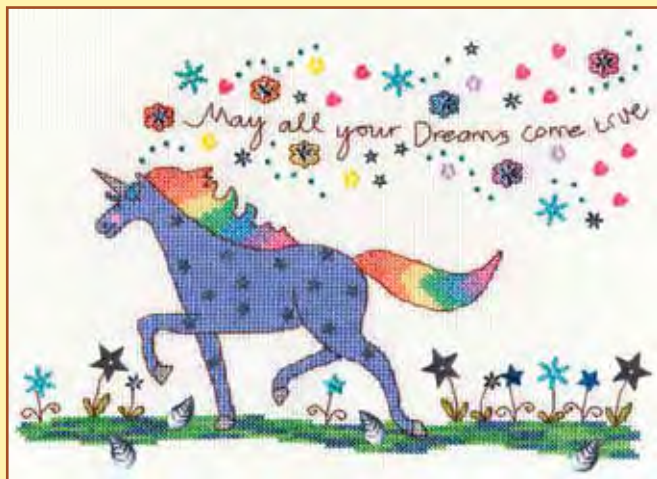
Love Summer
ref XKA11 23x26cm



Love Autumn
ref XKA12 23x26cm



Love Winter
ref XKA13 23x26cm



Love Dreams
ref XKA14 25x18cm



Beryl Cook

14hpi Counted Cross Stitch

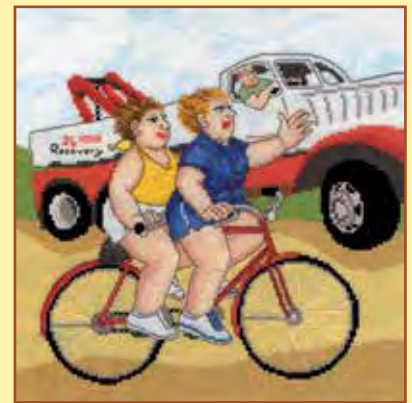
©2018 John Cook.
 Licensed by This is Iris.
www.thisisiris.co.uk



Bubbly
 ref XBC1 32x35cm



Girls' Night Out
 ref XBC2 24x24cm



Wheels
 ref XBC3 26x24cm

Rosina Wachtmeister

14hpi Counted Cross Stitch



Sunflower Way
 ref XRW1 32x18cm



Poppy Nights
 ref XRW2 28x19cm

Happy Moments
 ref XRW3 24x34cm



Lazy Daisy
 ref XRW4 23x19cm



Santoro®'s Gorjuss™

14hpi Counted Cross Stitch



Puddles Of Love
ref XG1 16x21cm



I Gave You My Heart
ref XG2 16x21cm



New Heights
ref XG3 16x21cm



The Pretend Friend
ref XG4 16x21cm



The Foxes
ref XG5 16x21cm



I Love You Little Rabbit
ref XG6 16x21cm



Ruby
ref XG7 16x21cm



Winter Friend
ref XG8 16x21cm



The Owl
ref XG9 16x21cm



On Top Of The World
ref XG12 16x21cm



I Found My Family In A Book
ref XG15 16x21cm



Fox Gloves
ref XG16 16x21cm

Santoro®'s Gorjuss™

14hpi Counted Cross Stitch



The Last Rose
ref XG17 16x21cm



You Brought Me Love
ref XG18 16x21cm



Poppy Wood
ref XG19 16x21cm



Bluebird's Proposal
ref XG20 16x21cm



The White Rabbit
ref XG21 16x21cm



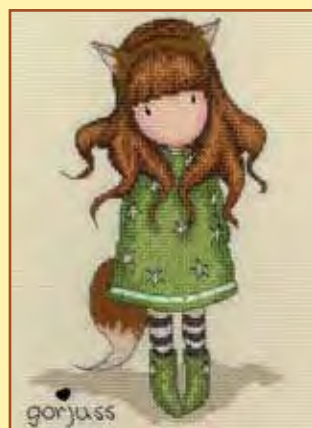
Toadstools
ref XG22 16x21cm



Ladybird
ref XG23 16x21cm



The Fox
ref XG24 16x21cm



The Balloon
ref XG25 16x21cm



The Runaway
ref XG10 42x25cm





Santoro®'s Gorjuss™ 14hpi Counted Cross Stitch

We Can All Shine
ref XG26 22x26cm



Lost For Woods
ref XG27 22x26cm



Panda Girl
ref XG28 22x26cm



Pink Poppy
ref XG29 22x26cm



Sweet Cake
ref XG30 22x26cm



Sweet Tea
ref XG31 22x26cm



Rainbow Dreams
ref XG32 22x26cm



All These Words
ref XG33 22x26cm



Santoro®'s Gorjuss™ 16hpi Counted Cross stitch with exclusive full colour printed backgrounds

Oops - A - Daisy
ref XG34 23x28cm



The Scarf
ref XG35 23x28cm



Pulling On Your Heart Strings
ref XG36 23x28cm



Hush Little Bunny
ref XG37 23x28cm





Moira Blackburn Traditional Samplers

16hpi Counted Cross Stitch



Friend's House
ref XS1 30x15cm



Green Tree
ref XS2 18x36cm



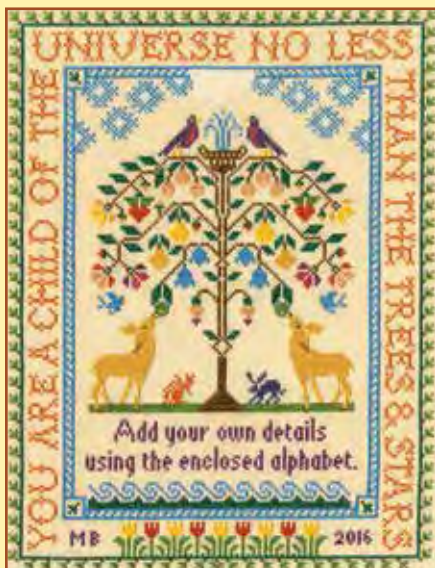
Country Cottage
ref XS3 24x34cm



Three Things
ref XS4 42x57cm



Season and Time
ref XS5 52x33cm



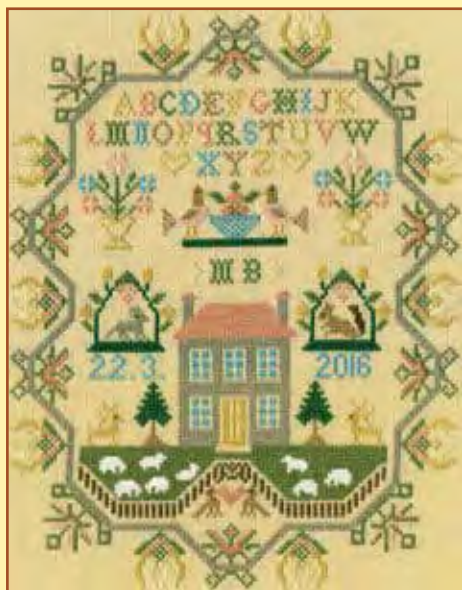
Tree of Life
ref XS6 24x31cm



Pains of Love
ref XS7 43x38cm

Moira Blackburn Traditional Samplers

16hpi Counted Cross Stitch



Sheep May Safely Graze
ref XS8 21x27cm



The Prayer
ref XS9 23x23cm



Dear Thing
ref XS10 15x23cm



Peaceful Garden
ref XS11 34x51cm



Pride and Joy
ref XS12 24x25cm



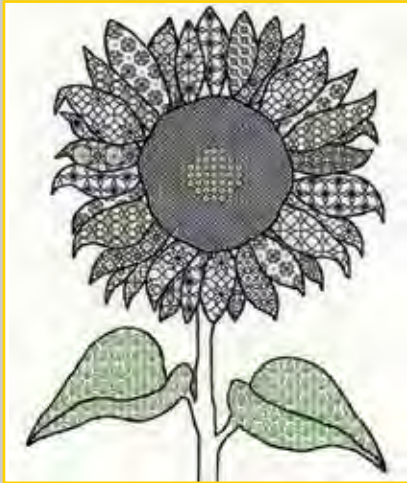
Two Hares
ref XS13 27x22cm



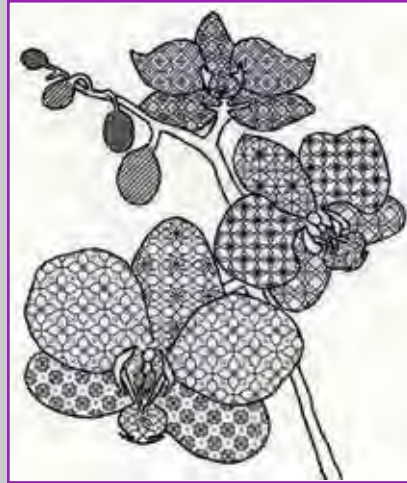
The Birthday Sampler
ref XS14 24x34cm

Blackwork

14hpi Counted Cross Stitch by Eleanor Friston



Sunflower
ref XBW1 27x33cm



Orchid
ref XBW2 28x32cm



Water Lily
ref XBW3 27x30cm



Poppy
ref XBW4 30x33cm



Irises
ref XBW5 28x33cm



Rose
ref XBW6 28x33cm



Daffodils
ref XBW7 28x33cm



Tulips
ref XBW8 29x33cm

Margaret Sherry

14hpi Counted Cross Stitch



Are We There Yet?
ref XMS1 36x28cm



Happiness Is A Way Of Life ref XMS2 60x20cm



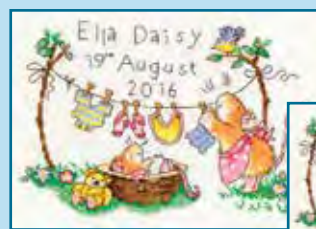
Sugar And Spice ref XMS3 40x19cm



Kitty Knit ref XMS4 52x22cm



Just Married
ref XMS5 28x24cm



Squeaky Clean
ref XMS6 26x20cm

Kits have threads
for both colour schemes



Squeaky Wheels
ref XMS7 26x20cm

London Bus
ref XMS8
30x22cm



London Calling
ref XMS9 18x22cm



London On Parade
ref XMS10 20x22cm



Up, Up And Away
ref XMS11 22x25cm



In The Bag
ref XMS12 17x20cm



A Little Bird Told Me
ref XMS13 20x20cm



Flying High
ref XMS14 19x25cm

Samplers

14hpi Counted Cross Stitch
(unless stated)



Spring Celebration
ref XAH2 26x26cm
by Alison Hullyer



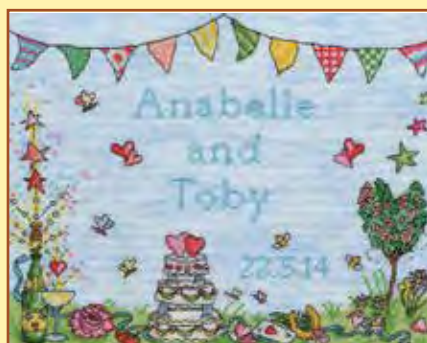
Winter Celebration
ref XAH5 26x26cm
by Alison Hullyer



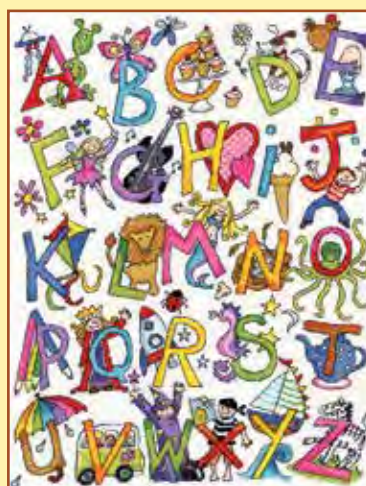
Wedding Heart
16hpi ref XWS10 34x30cm
by Rebecca Dennison



Animal Alphabet
ref XAA1 40x40cm
by Alex Clark



Wedding Celebration
ref XWS8 30x23cm
by Amanda Loveseed



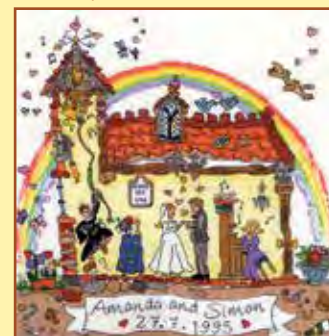
Alphabet Fun
ref XJR8 35x45cm
by Julia Rigby



Number Fun
ref XJR23 30x44cm
by Julia Rigby



Love Sampler
ref XSW5 23x15cm
by Susan Wheeler



Cut Thru' Wedding
ref XCT23 31x32cm
by Amanda Loveseed



My First Alphabet
ref XKGI 31x44cm
by Kate Garrett



My Favourite Things
ref XSA1 33x43cm
by Simon Abbott



Patchwork Farm
ref XJR20 29x26cm by Julia Rigby

Birth Samplers

14hpi Counted Cross Stitch
(unless stated)



New Arrival
ref XJA5 38x18cm by June Armstrong



Baby Heart
ref XJA7 27x24cm
by June Armstrong



Bunny Love - Boy
ref XKG3 32x21cm
by Kate Garrett



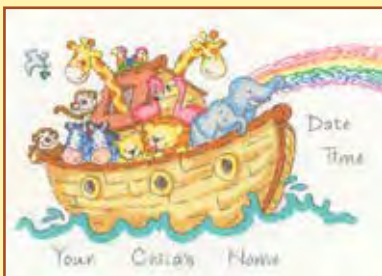
Bunny Love - Girl
ref XKG2 32x21cm
by Kate Garrett



All Creatures
ref XJR6 40x23cm by Julia Rigby



My Ark
ref XEJ3 24x36cm
by Emily Johnston



Baby Ark Sampler
ref XNB5 36x26cm by Kate Garrett



Toy Box
ref XNB3 25x18cm by Kate Garrett



Two by Two
ref XJA6 43x22cm by June Armstrong



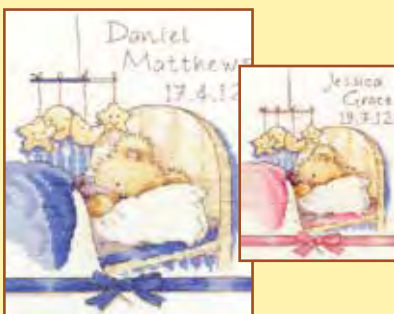
First Born
ref XNB2 38x18cm
by Kate Garrett



Baby Grow
16hpi ref XNB4
20x28cm
by Imogen Hudson



Baby Mobile
16hpi ref XNB1 26x26cm
by Rosina Rossi



Huggles Bedtime
ref XIH1 18x21cm
by Ian Hallows



Kits have threads for both colour schemes

Huggles Balloon
ref XIH2 18x21cm
by Ian Hallows



Kits have threads for both colour schemes

Huggles Featherweight
ref XIH3 18x21cm
by Ian Hallows

Cut Thru'

Counted Cross Stitch by Amanda Loveseed



Lighthouse

16hpi ref XCT1 26x35cm



Princess Palace

16hpi ref XCT2 26x35cm



Rocket

16hpi ref XCT6 26x35cm



Cottage

16hpi ref XCT8 26x35cm



North Pole House

14hpi ref XCT17 26x36cm



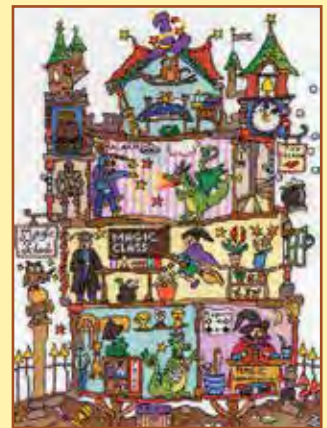
Castle

16hpi ref XCT19 26x35cm



Haunted House

16hpi ref XCT25 26x35cm



Magic School

14hpi ref XCT31 26x36cm



Fairy Hill

16hpi ref XCT3 35x26cm



Noah's Ark

16hpi ref XCT5 35x26cm



Pirate Ship

16hpi ref XCT7 35x26cm



Gypsy Wagon

14hpi ref XCT13 36x26cm



Vintage Car

14hpi ref XCT20 36x26cm



Vintage Caravan

14hpi ref XCT21 36x26cm

Cut Thru'

Counted Cross Stitch by Amanda Loveseed



Camper Van
14hpi ref XCT16 36x26cm



Steam Train
14hpi ref XCT24 36x26cm



Nativity
14hpi ref XCT27 35x28cm



Spaceship
14hpi ref XCT28 36x26cm



Bakery
16hpi ref XCT29 35x26cm



Buckingham Palace
16hpi ref XCT30 35x26cm



Christmas Bothy
14hpi ref XCT32 36x26cm



Ballroom
16hpi ref XCT33 35x26cm

Sew Dinky

14hpi Counted Cross Stitch by Amanda Loveseed



VW Van
ref XSD2 20x15cm



Tent
ref XSD7 20x15cm



Caravan
ref XSD8 20x15cm



Cottage
ref XSD9 20x15cm

Thelwell

14hpi Counted Cross Stitch by Norman Thelwell



Trophies
ref XT1 24x18cm



Horse Play
ref XT3 50x20cm



Hugs
ref XT4 18x24cm



Hanging On
ref XT6 24x18cm



Crash Landing
ref XT7 48x20cm

©The Thelwell Estate 2018



A Good All Rounder
ref XT5 18x24cm

Birds

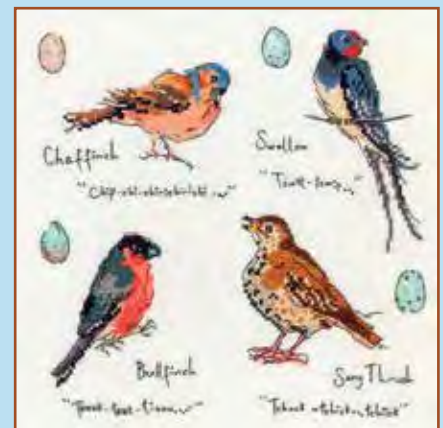
14hpi Counted Cross Stitch by Madeleine Floyd



Garden Birds 1
ref XMF1 26x26cm



Garden Birds 2
ref XMF2 26x26cm



Garden Birds 3
ref XMF3 26x26cm

Madeleine Floyd

Animals

14hpi Counted Cross Stitch



Exotic Birds
ref XGR3 38x16cm
by Gillian F Roberts



Lazy Dogs
ref XGR2 36x16cm
by Gillian F Roberts

Lazy Cats
ref XGR1 36x16cm
by Gillian F Roberts



Cat Stack
ref XKM1 18x34cm
by Kate Mawdsley



Dog Stack
ref XKM2 18x34cm
by Kate Mawdsley



Daisy Patch Cat
ref XDP1 22x31cm
© Paper Rose Ltd



Daisy Patch Dog
ref XDP2 22x31cm
© Paper Rose Ltd



Beach Walkies
ref XJR30 31x17cm by Julia Rigby



Highland Walkies
ref XJR31 31x17cm by Julia Rigby



Follow Me 1
ref XFM1 11x33cm
© Milkwood Publishing



Follow Me 2
ref XFM2 11x33cm
© Milkwood Publishing



Follow Me 3
ref XFM3 11x33cm
© Milkwood Publishing

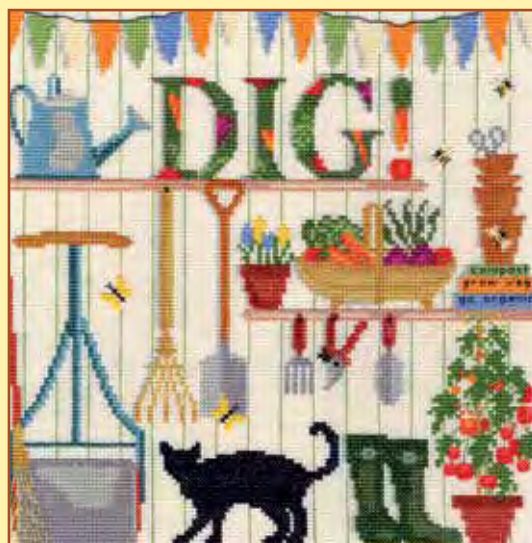
Hobbies

Counted Cross Stitch



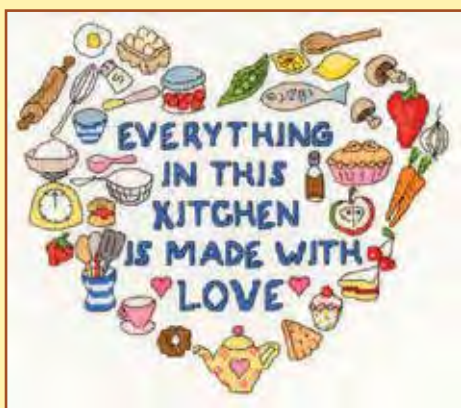
Bake!

14hpi ref XH8 25x25cm by Cathy Squire



Dig!

14hpi ref XH9 25x25cm by Cathy Squire



Heart of the Kitchen

14hpi ref XJA8 25x22cm by June Armstrong



Heart of the Garden

14hpi ref XJA9 25x22cm by June Armstrong



Sewing

16hpi ref XH1 24x33cm by Amanda Loverseed



Baking

16hpi ref XH2 24x33cm by Amanda Loverseed

Friends and Family

Counted Cross Stitch



Home Sweet Home

14hpi ref XSS5 26x25cm by Sarah Summers



Home Sampler

14hpi ref XSW4 18x28cm by Susan Wheeler

Retail Therapy
14hpi ref XCC1 42x20cm
by Camilla Charnock



My Family Tree

14hpi ref XBD1 38x30cm by Bothy Designs



Traditional Family Tree

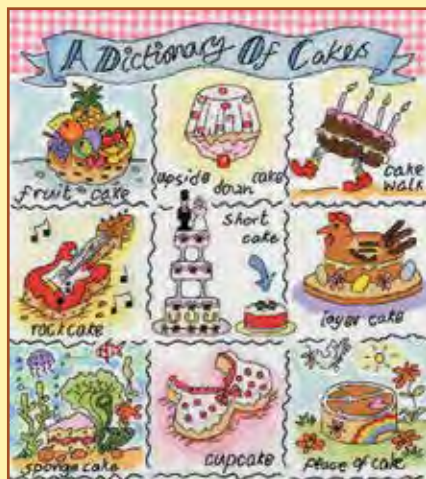
16hpi ref XBD2 30x36cm by Bothy Designs

A Dictionary of ...

14hpi Counted Cross Stitch by Helen Smith



Tea
ref XD01 26x28cm



Cakes
ref XD03 26x28cm



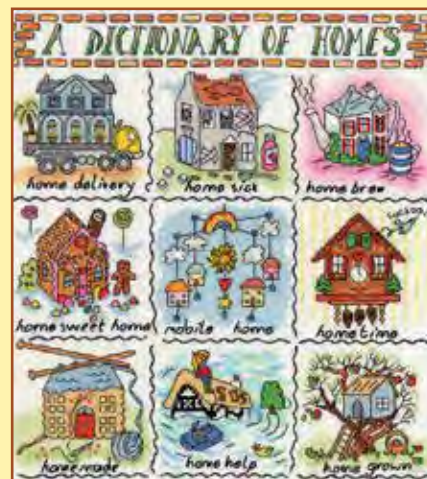
Cats
ref XD04 26x28cm



Dogs
ref XD05 26x28cm



Robins
ref XD08 26x28cm



Homes
ref XD09 26x28cm



Love
ref XD011 26x28cm



Technology
ref XD014 26x28cm



Coffee
ref XD015 26x28cm

Fun!

14hpi Counted Cross Stitch by Julia Rigby



Old MacDonald
ref XJR2 38x16cm



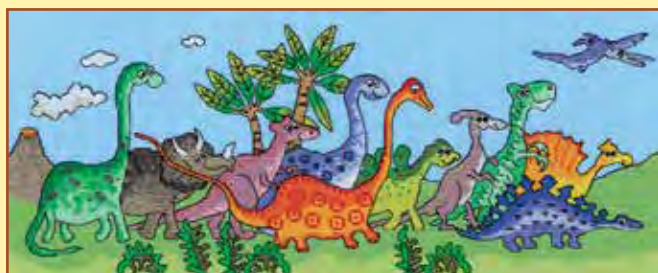
VW Fun
ref XJR9 44x12cm



Beach Hut Fun
ref XJR19 37x15cm



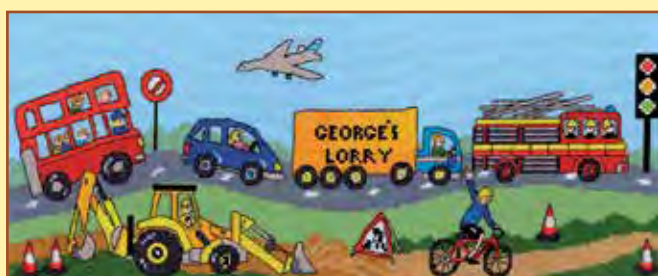
Allotment Fun
ref XJR21 37x12cm



Dinosaur Fun
ref XJR22 38x16cm



Safari Fun
ref XJR24 38x16cm



Wheely Fun
ref XJR26 44x18cm



Fairy Tale Fun
ref XJR27 38x16cm



Christmas Fun
ref XJR28 38x16cm



Deckchair Fun
ref XJR29 37x15cm

Row of ...

16hpi Counted Cross Stitch by June Armstrong



Row of Fairies
ref XR01 36x10cm

Row of Dogs
ref XR02 36x10cm



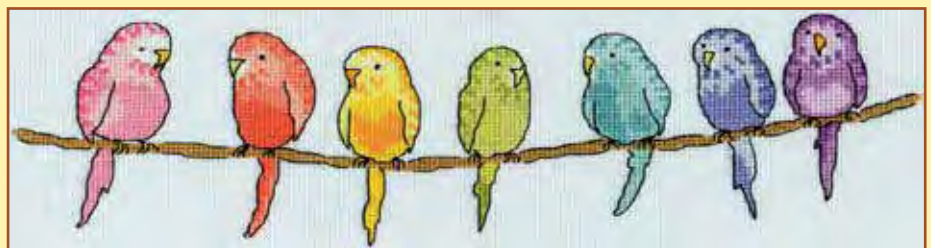
Row of Cats
ref XR03 36x10cm

Row of Xmas Fairies
ref XR04 36x10cm



Row of Sugar Plum Mice
ref XR06 36x10cm

Row of Budgies
ref XR09 30x10cm



Row of Gnomes
ref XR010 33x10cm

Little Jem

14hpi Counted Cross Stitch by Nicola Mason



All Fall Down
ref XNM1 24x18cm



Wishful Thinking
ref XNM3 18x25cm



Ted's Outing
ref XNM4 26x22cm



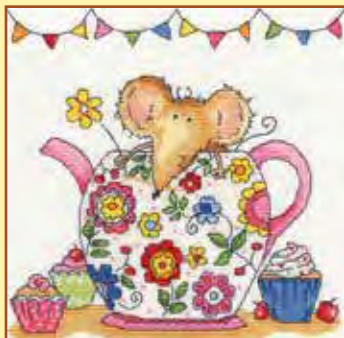
Meadow Flowers
ref XNM2 26x18cm

Cherry on Top
ref XNM5 20x26cm



Mouse!

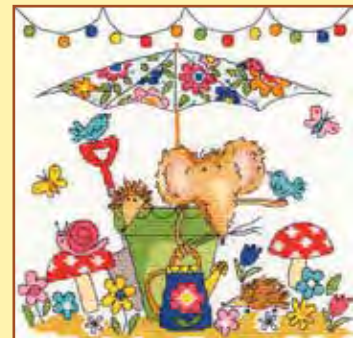
14hpi Counted Cross Stitch by Susan Wheeler



Teapot Mouse
ref XSW6 18x18cm



Baking Mouse
ref XSW7 18x18cm



Garden Mouse
ref XSW8 18x18cm



Sewing Mouse
ref XSW9 18x18cm



Christmas Mouse
ref XSW10 18x18cm

Funky

14hpi Counted Cross Stitch
by Caroline Rose



Funky Street
ref XCR1 36x16cm



Funky Caravan
ref XCR2 36x16cm



Funky Houseboat
ref XCR3 34x25cm



Funky Lighthouse
ref XCR4 36x16cm

Slightly Dotty

14hpi Counted Cross Stitch
by Emily Johnston



Slightly Dotty Owls
ref XEJ1 26x26cm



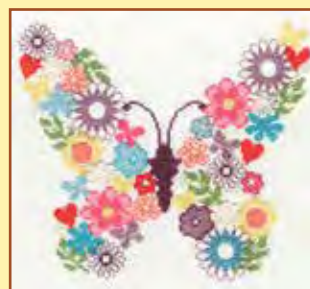
Slightly Dotty Elephants
ref XEJ4 26x26cm

Bouquet

14hpi Counted Cross Stitch
by Laura Ann



Heart Bouquet
ref XB1 25x23cm



Butterfly Bouquet
ref XB2 25x23cm



Van Bouquet
ref XB3 28x18cm



Owl Bouquet
ref XB4 28x21cm

Beside the Seaside

14hpi Counted Cross Stitch by Janet Bell



Balloons ref XBS1 26x26cm



Beach Huts ref XBS2 26x26cm



Harbour Lights ref XBS3 26x26cm



Deckchairs ref XBS4 26x26cm

New England Homes

14hpi Counted Cross Stitch by Sally Swannell



Spring ref XSS1 21x24cm



Summer ref XSS2 21x24cm



Fall ref XSS3 21x24cm



Winter ref XSS4 21x24cm

Christmas

Counted Cross Stitch



Scandi Heart
16hpi ref XX8 26x26cm
by Karen Tye Bentley



Scandi Tree
14hpi ref XX9 29x40cm
by Bothy Designs



Star Of Bethlehem
14hpi ref XX10 35x12cm by June Armstrong



Peace And Goodwill
16hpi ref XX11 25x17cm
by Bothy Designs



Love Yule
14hpi ref XKA15 20x26cm
by Kim Anderson

Christmas Cards

14hpi Counted Cross Stitch comes with a triple fold card and envelope

Simon Abbott

Amanda Loveseed



Dashing Through The Snow
ref XMAS1 14x9cm



Flying Home For Christmas
ref XMAS2 14x9cm



Christmas Post
ref XMAS5 14x9cm

June Armstrong - worked on sparkle Aida!



Merry Christmas
ref XMAS3 14x9cm



White Christmas
ref XMAS4 14x9cm



Jolly Ho!
ref XMAS6 9x14cm

Vintage Christmas

A range of designs by Jason Bennion on 14hpi dark blue Aida using vintage multicolour threads and Lana to give a festive finish



Ho Ho Ho!
ref XVC1 18x26cm



Sleigh Bells Ring
ref XVC2 18x26cm



Red Red Robin
ref XVC3 18x26cm



Let It Snow
ref XVC4 18x26cm

Historical

14hpi Counted Cross Stitch by Pete Smith



Kings and Queens
ref XPS1 40x52cm



Jane Austen
ref XPS4
28x38cm



Shakespeare
ref XPS5
28x38cm

London

16hpi Counted Cross Stitch by Julia Rigby



London
ref XLS4 36x38cm



Dickens
ref XPS6
28x38cm

L.S. Lowry and Lowry Style

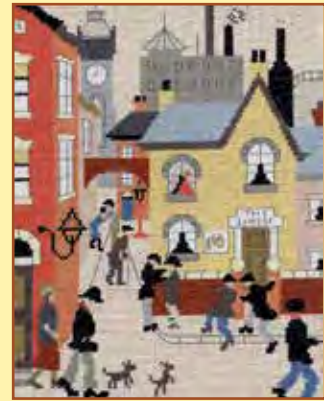
14hpi Counted Cross Stitch



The Arrest
ref XLC6 21x28cm



Street Scene
ref XLC9 32x26cm



The Cheese
ref XLC11 21x28cm



Market Scene, Northern Town
ref XLC15 37x34cm
1939 © The Lowry Collection, Salford



Friday Market
ref XLC13 33x26cm



Coming from the Mill
ref XLC14 37x32cm
1930 © The Lowry Collection, Salford



The Canal Bridge
ref XLC10 33x26cm

William Morris

14hpi Counted Cross Stitch



Bird
ref XAC2 31x31cm



Strawberry Thief
ref XAC3 31x31cm



Sunflowers
ref XAC4 31x31cm



Bell Flower
ref XAC5 31x31cm

William Morris

12hpi Full Colour Printed Tapestry



Bird
ref TAC2 14x14 inches



Strawberry Thief
ref TAC3 14x14 inches



Sunflowers
ref TAC4 14x14 inches



Bell Flower
ref TAC5 14x14 inches



Hyacinth
ref TAC6 14x14 inches



Cray
ref TAC7 14x14 inches



Garden
ref TAC8 14x14 inches



Golden Lily
ref TAC9 14x14 inches

Suzy Taylor

12hpi Full Colour Printed Tapestry



Dragonfly
ref TST1
14x14 inches

Summer Melody
ref TST2
14x14 inches



L.S. Lowry & Lowry Style

12hpi Full Colour Printed Tapestry



The Canal Bridge
ref TLC10 38x27cm



Street Scene
ref TLC9 38x28cm



The Cheese
ref TLC11 25x31cm