

Summer
2017




quilting
treasures

IMAGINE & CREATE




24  **5 Alarm**
Dan Morris
Pages 24-25

10  **Brooke**
Studio 8
Pages 10-11
Project Page 74

54  **Artworks**
Liz Dillon/Studio 8
Pages 54-55
Project Page 74

52  **Confetti Blossoms**
Turnowsky
Pages 52-53
Project Page 74


66  **Ashtyn**
JuneBee
Pages 66-67
Project Page 74


14  **Critters at Play**
Studio 8
Pages 14-15
Project Page 75


48  **Bellisima**
Turnowsky
Pages 48-49
Project Page 74

18  **Dream Catcher**
Studio 8
Pages 18-19
Project Page 75

58  **Bethel**
Antiquities
Pages 58-59
Project Page 74

70  **Ellery**
JuneBee
Pages 70-71
Project Page 75

46  **Birds of a Feather**
Gorjuss for Santoro
Pages 46-47

22  **Face Off**
Dan Morris
Pages 22-23


8



Harrison Park Studio 8

Pages 8-9
Project Page 75

64



Melodie Ink & Arrow

Pages 64-65
Project Page 76

42



Hatters Tea Party Janet Wecker-Frisch

Pages 42-45
Project Page 75


26



Motorin' Dan Morris

Pages 26-27
Project Page 76


68



Hayden JuneBee

Pages 68-69
Project Page 75

34



North Woods Cynthia Fisher

Pages 34-35
Project Page 76

28



Home Sweet Home Dan Morris

Pages 28-29
Project Page 76

16



On the Road Studio 8

Pages 16-17
Project Page 77

36



House on the Hill Lisa Jane Smith

Pages 36-37
Project Page 76


50



Party Animals Turnowsky

Pages 50-51

40



Love Grows Here Karla Dornacher


Pages 40-41
Project Page 76

30



Patchwork Farms Desiree

Pages 30-31
Project Page 77

62 

Say Cheese
Ink & Arrow

Pages 62-63
Project Page 77

38 

So Saucy
Lisa Jane Smith

Pages 38-39
Project Page 77

12 

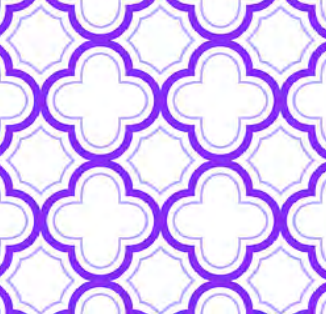
Soirée
Studio 8

Pages 12-13
Project Page 77

32 

Winter Garden
Sarah Summers

Pages 32-33
Project Page 77

72 

Sorbet Essentials

Pages 72-73
Project Page 77



Quilt Projects 74-77

USA-Company Regional Sales Managers 78

Canadian & International Distributors 79



**Our Customer Service Department is available
Monday - Friday: 8:30 AM - 5:00 PM EST**

Tel: 800-876-2756
Fax: 800-540-7063 • 401-275-9328

quiltingtreasures.com • inkandarrows.com
View Quilting Treasures fabrics online. Browse tools that support
you, the shop owner. Shop when YOU want!
Log on now to request an account

An Employee-Owned Company

Our Quilting Treasures team extends beyond our employee-owners. We work with creative and dedicated artists to expand our in-house studio talent. We are committed to providing an array of collections suited to many different styles. Collaboration is the Quilting Treasures way!

Designers

J.W. Frisch

Hatters Tea Party
Page-42



Illustrator J. Wecker Frisch works from her home studio in St. Louis, MO and attributes her artistic ability to a 'God given' talent. Formal classes in commercial art accompanied by a twenty year art based business was the path that led her to Art Licensing and fabric design. There are three identifiable elements to her designs; her visual humor, heartfelt messaging and images we can all relate to.

Studio 8

Brooke, Critters at Play, Harrison Park, On the Road, Soiree · Pages- 8 - 19



Studio 8 lines are created in-house by our talented design team in New York. Led by Design Director Janet Andersen, our studio develops fabric prints reflecting the latest trends in color and design.

Rosanne Abbenda, Cindy Sepp, Felicia Gallo, Alicia Jacobs Dujets and Monica Zhu work together to bring fabrics styled for dynamic projects with a modern flair. Studio 8 collections are prints with style... prints for you!

Dan Morris

5 Alarm, Face Off,
Page-22, 24, 26, 28



Since 1994 Dan Morris has been creating innovative, original art for a broad array of industries. From T-shirts for the Grateful Dead, 1960's inspired peace stickers, and celestial calendars, to more traditional home and gift markets, Dan has a wide range of eclectic artwork spanning almost every artistic theme.

Desiree

Patchwork Farms
Page-30



Desiree works in many media including watercolors, pastels, colored pencils, mixed media and fabrics. Desiree was introduced to quilting in 2001 when a family tragedy forced her to stay home to care for her daughter. She began using her artistic energy to design quilt patterns and art quilts, many which were based on murals that she had painted.

Sarah Summers

Winter Garden
Page--32



Sarah was born and raised in Berkeley, a small historical market town on the edge of the beautiful Cotswold Hills, situated in the west of England. After attending art college for 4 years, she went on to work as a junior graphic designer for several design agencies in and around Bristol.

Lisa Jane Smith

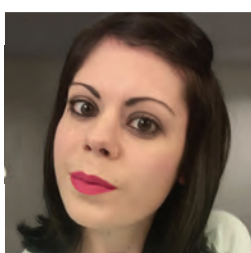
House on the Hill
Page-36



I have been creating in many mediums, for many years. My passion and joy is illustration. I draw what I like and, sometimes, I even like what I draw. The majority of my work is available for licensing through MHS Licensing.

Alicia Dujets

Say Cheese
Page--62



Alicia Jacobs Dujets is an illustrator and designer based out of northern New Jersey. She earned her MFA in Illustration as Visual Essay at the School of Visual Arts and her BFA at the Maryland Institute College of Art. She is honored to have work included in American Illustration, TED Books, and SMITH Magazine.

Cynthia Fisher

North Woods
Page-34



Cynthia Fisher of Hamilton, Montana, is a self-taught wildlife artist, working mostly in acrylics. She has been painting full-time for almost thirty years, concentrating mainly on depicting unique animal behaviors and interactions, learned from a lifetime of studying and observing wildlife.

Karla Dornacher

Love Grows Here
Page-40



I love drawing, painting and just being creative! Since I first became aware that my art ability was a gift from God, it has been my hearts desire to use it to glorify Him... and to be a blessing and encouragement to others.

Employee Owners

President



Ken Gamache

Customer Service



Anita Pedchenko



Justina Pina



Luis Torres



Debra Volker

Design Studio



Alicia Jacobs Dujets



Cindy Sepp



Janet Andersen



Felicia Gallo



Monika Zhu



Rosanne Abbenda

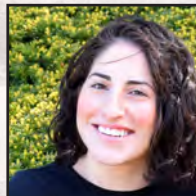
Marketing



Tiffany Jawor-Smith



Autumn Laskowski



Isabelle Sanchez

Supply Chain



Thomas J. Kemble



Brian Millar



John Fraioli



John Ferreira

Harrison Park

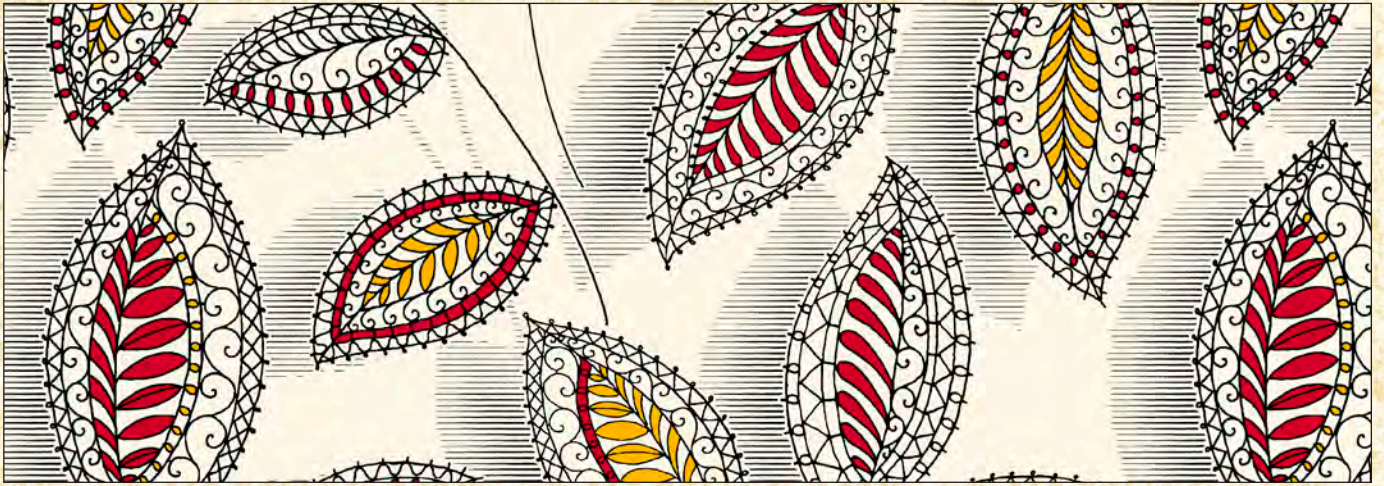
MODERN AUTUMNAL PRINTS



Images are for inspiration only unless otherwise noted. Similar projects can be found online.



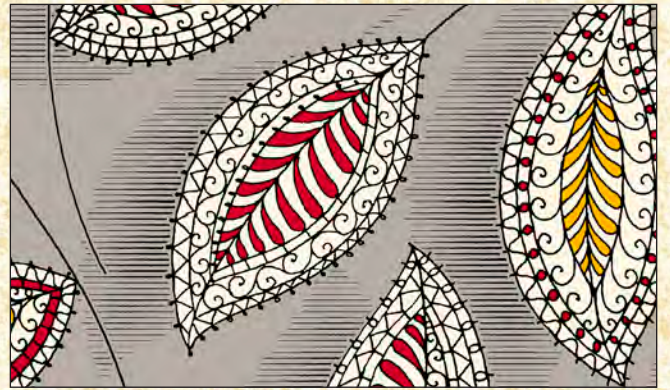
HARRISON PARK



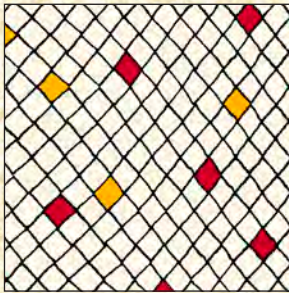
26215 E



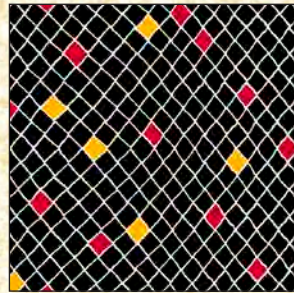
26215 J



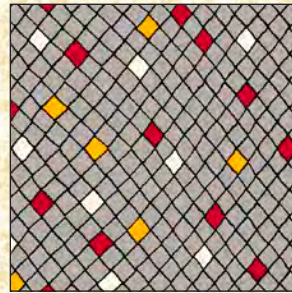
26215 K



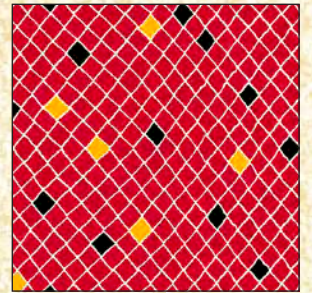
26217 E



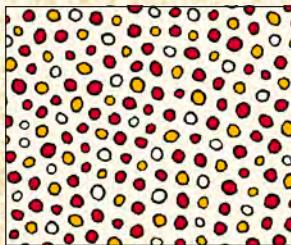
26217 J



26217 K



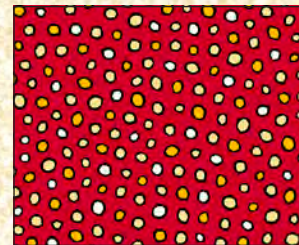
26217 R



26219 E



26219 J



26219 R



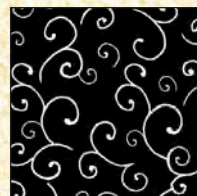
26218 EJ



26218 EK



26218 ER



26218 J



26218 R

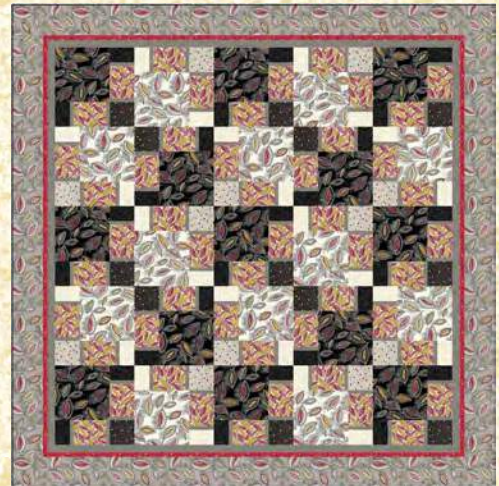


26218 S

Orders in by July 1st will ship mid September



Styled for sophistication the etched leaves and ferns combine with swirls, dots and geometrics to create a fashion-forward blend of prints. Pops of red, gold and black against the softness of the cream & gray will create a wow project!



Queen Size Quilt : 97"



26216 E



26216 J

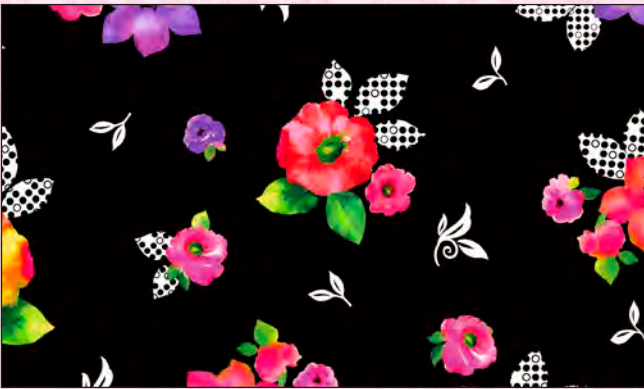


26216 K





26317 X



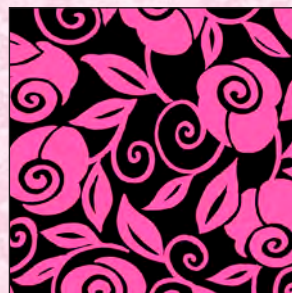
26318 J



26318 Z



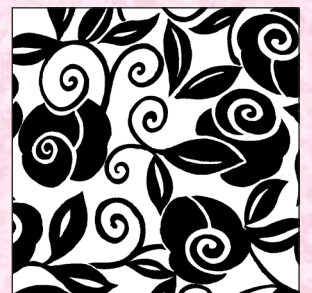
26320 JH



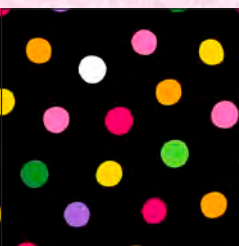
26320 JP



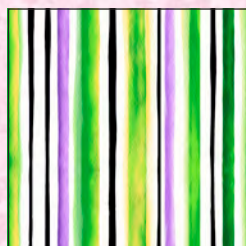
26320 SO



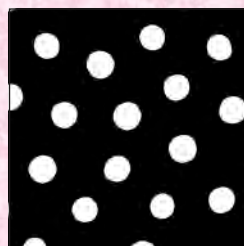
26320 ZJ



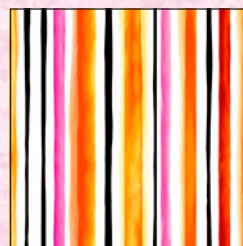
26321 JX



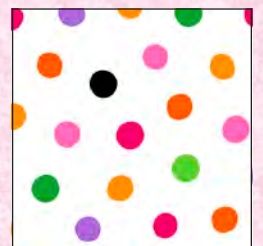
26322 H



26321 JZ



26322 O



26321 ZX

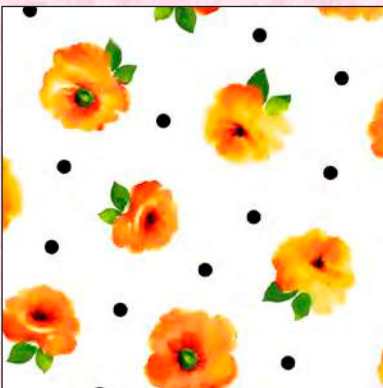
Orders in by July 15th will ship mid October



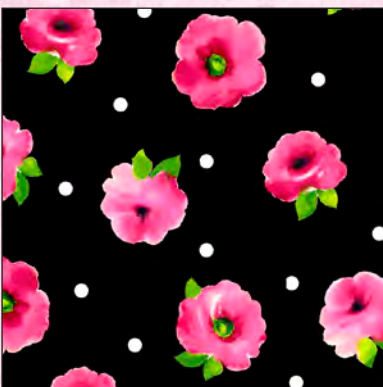
Watercolor and graphic florals blend together for a modern twist and elevated style! This Studio 8 collection combines bright and bold color with classic black and white for a fashion-forward collection. Perfect for apparel, accessories and lively home décor. These prints coordinate beautifully with our Illusions and Color Blends basic collections.



26319 ZL



26319 ZO



26319 J





26271 X



26272 P



26272 V



26272 S



26273 S



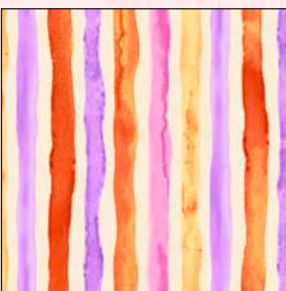
26273 O



26273 P



26273 V



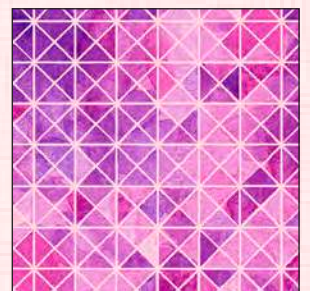
26276 E



26274 O



26276 V

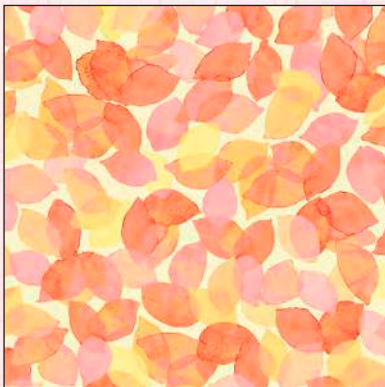


26274 P

Orders in by August 15th will ship mid November



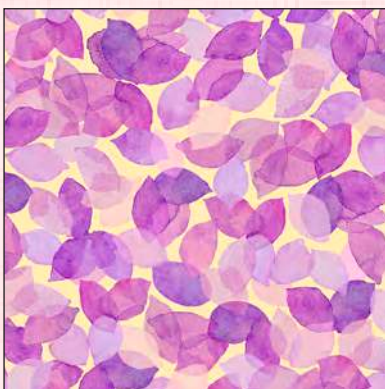
Dashing color and prints combine for a fabric soiree! This Studio 8 collection of watercolor florals mixed with paisley and geometric prints have a hand painted and washy color technique that is so en-vogue. Plum, fuchsia, orange and gold hues mingle together beautifully.



26275 O



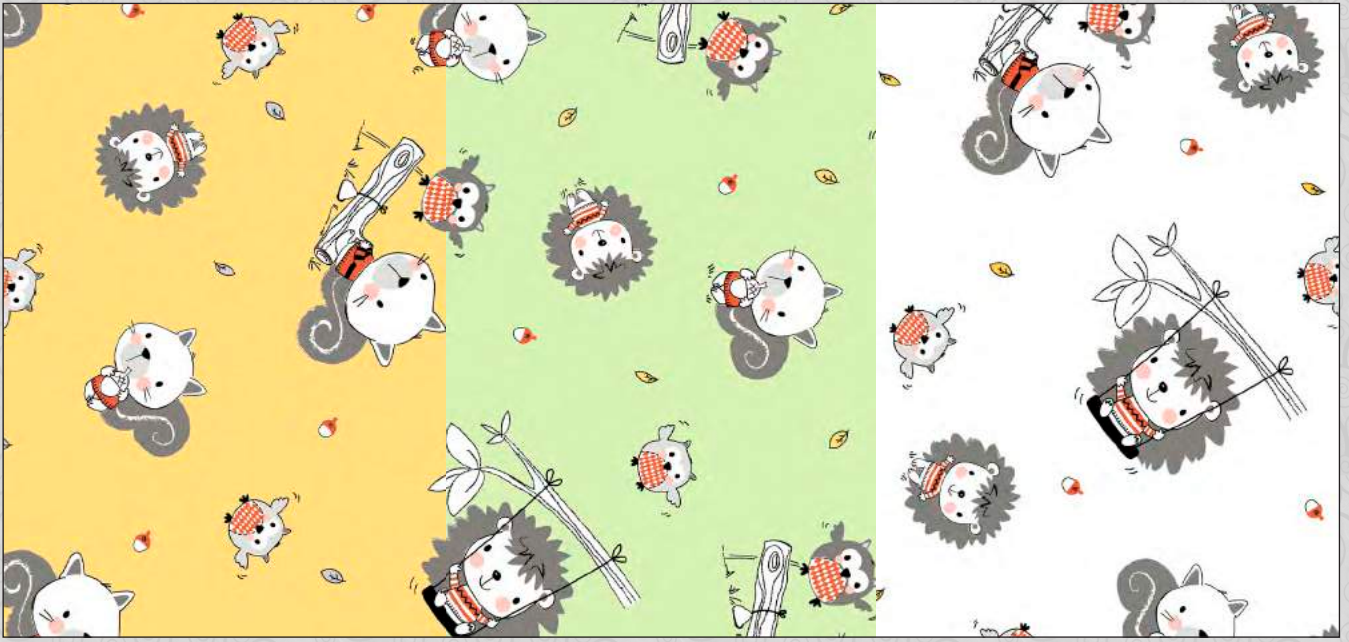
26275 R



26275 V



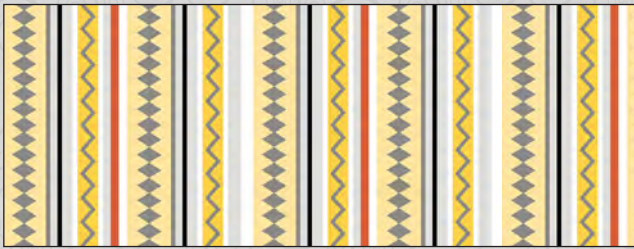
Critters At Play



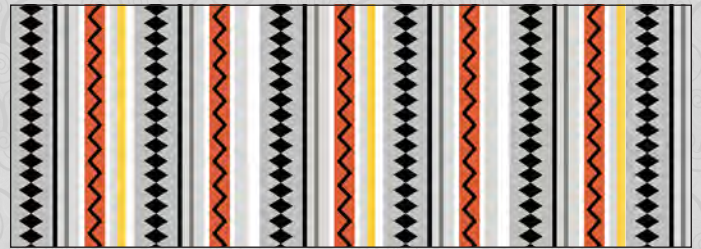
26227 S

26227 H

26227 Z



26230 S



26230 K



26228 S



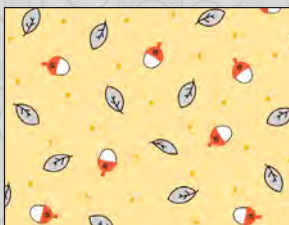
26228 O



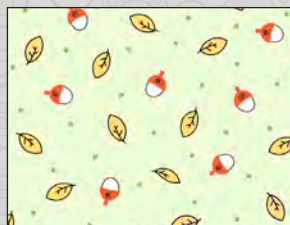
26228 H



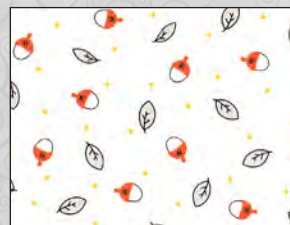
26228 K



26229 S



26229 H



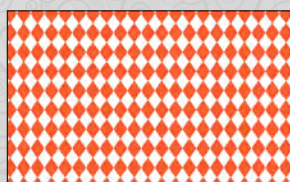
26229 Z



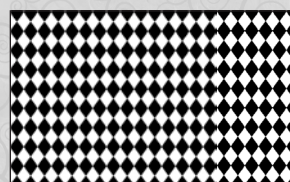
26229 K



26231 SK



26231 ZO



26231 ZJ



26231 ZK

Orders in by July 15th will ship mid October



Have some fun with these adorable woodland animals! With sweet gender-neutral colors, these critters will be perfect for any little boy or girl! The decorative stripe, harlequin and blenders are perfect companions to the animal prints. This Studio 8 collection would be fabulous for little outfits or nursery décor.



On The Road



26193 B

26193 Z



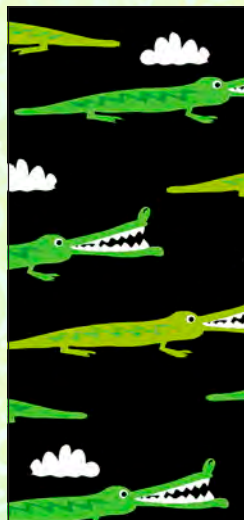
26194 B



26194 R



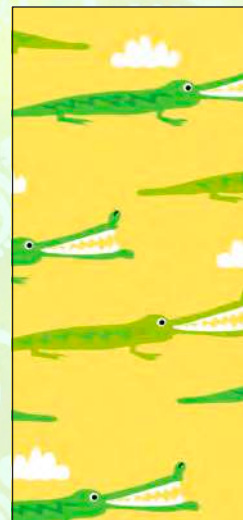
26195 Q



26196 J



26195 S



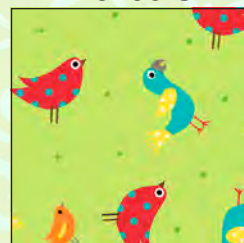
26196 S



26195 J



26197 B



26197 H



26197 Z

Orders in by August 15th will ship mid November



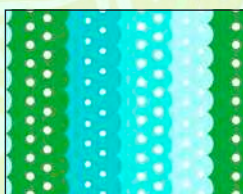
A playful collection filled with bright color and fun animals that are ready to go! The main panel print can be the perfect feature for a large quilt or playmat. The coordinating stripes, dots and animal prints are so much fun and perfect for apparel as well as home décor. Go on an adventure with this collection from Studio 8.



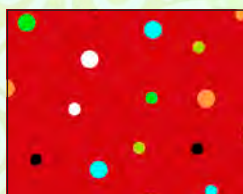
26192 X



26199 J



26198 B



26199 R



26198 R



26199 Z



26337 E



26338 J



26338 P



26338 Q



26340 J



26340 P



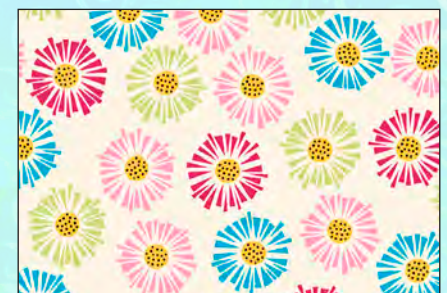
26340 E



26341 S



26341 P



26341 E



Orders in by July 1st will ship mid September



With floral flair, this whimsical collection combines updated calico prints with chic teepee and bird motifs! So stylish and on-trend with a must-have color palette that includes mustard, teal, black and fuchsia! This group coordinates well with our Ombre Scrolls basic collection.



26339 J



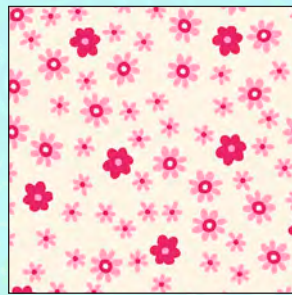
26339 P



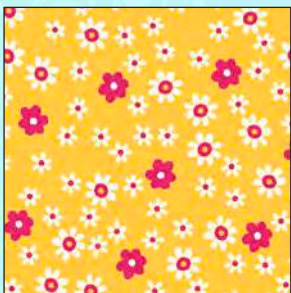
26339 Q



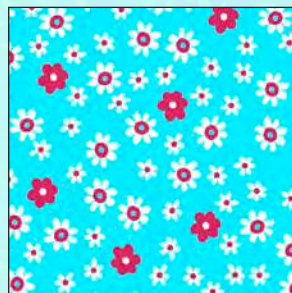
26342 J



26342 EP



26342 S



26342 Q



HOUSE ON THE HILL

from Lisa Jane Smith

pages 36 & 37



quilting
treasures

IMAGINE & CREATE



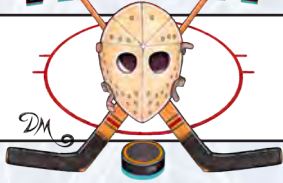
quilting
treasures
IMAGINE & CREATE



BELLISIMA
FROM
TURNOWSKY
S I N C E 1 9 4 0

PAGES 48 & 49

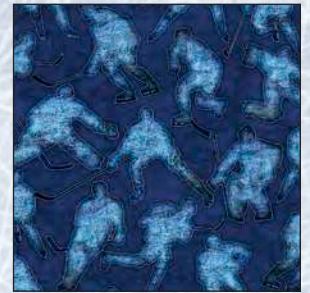
FACE OFF



Get geared up to wow your favorite Hockey enthusiast with some awesome new fabrics from Dan Morris! The variety of prints work well to create many types of fun projects!



26343 N



26349 N



26349 E



26349 B



26349 R



Orders in by July 1st will ship mid September

Dan Morris



Dan Morris



26347 N



26347 E



26345 B



26345 E



26344 B



26344 E



26344 N



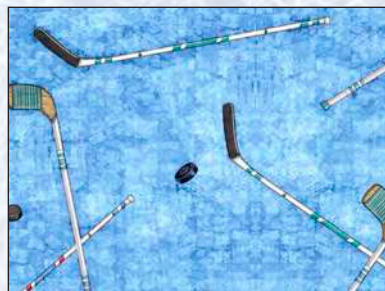
26346 B



26346 E



26346 N



26348 B



26348 E



26348 R



Face Off

5 ALARM

Create a commemorative project for your favorite firefighter or firehouse with this new collection by Dan Morris. Firetrucks, badges... even Dalmatian fire dogs are here to create a sizzling project!

Dan Morris



26291 O



26291 B



26290 J



26294 J



26292 N



26292 E



26292 J



26296 B



26296 K



26296 R

5 Alarm

Orders in by July 15th will ship mid October

Dan Morris



Dan Morris



26290 M



26293 J



26293 E



26295 E



26295 R



26295 N



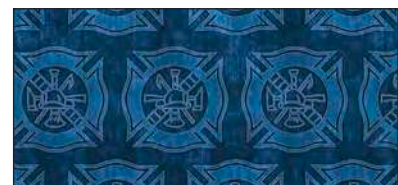
26294 K



26297 E



26297 S

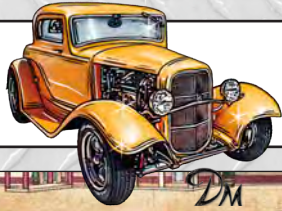


26297 B

©Dan Morris Designs

5 Alarm

25



The nostalgia of classic cars at roadside diners and cruisin' down the highway comes to life with this new collection by Dan Morris. Take a road trip with these prints, play license plate bingo, and relive those childhood Sunday drives with the family!



26352 S



26352 N



26351 E



26352 J



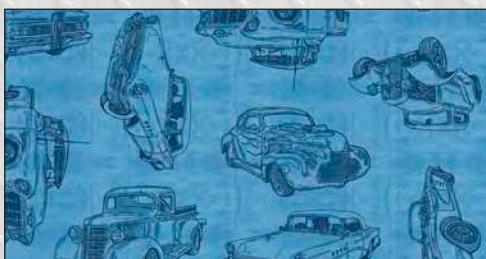
26354 S



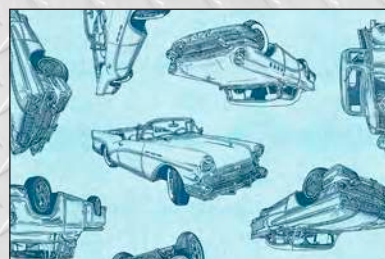
26354 Q



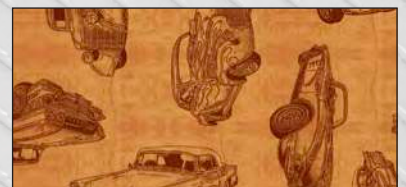
26354 J



26355 B



26355 Q



26355 S

Orders in by August 15th will ship mid November

Dan Morris



Dan Morris



26351 Q



26353 E



26353 B



26356 Q



26356 E



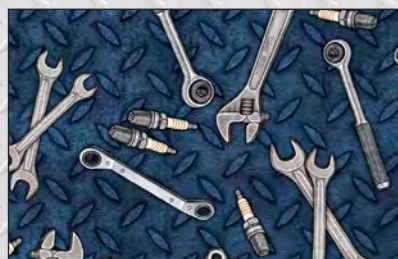
26356 J



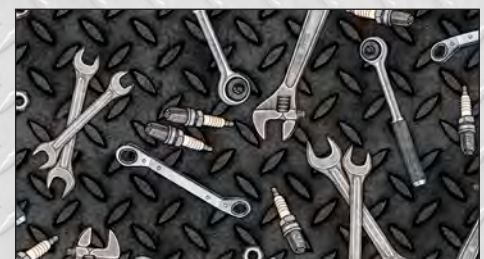
26353 J



26357 Q



26357 N



26357 J

Motorin'



With a vintage vibe, these sweet prints make you want to create cozy kitchen projects! How about a toaster cover with sweet treats on it... Or an apron with apron fabric – how kitsch! With a retro color palette, the possibilities are so delish!



26330 J



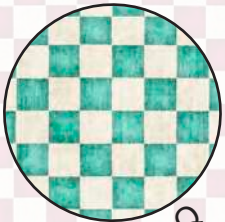
26330 Q



26330 Z



26332 J



26332 Q



26332 R



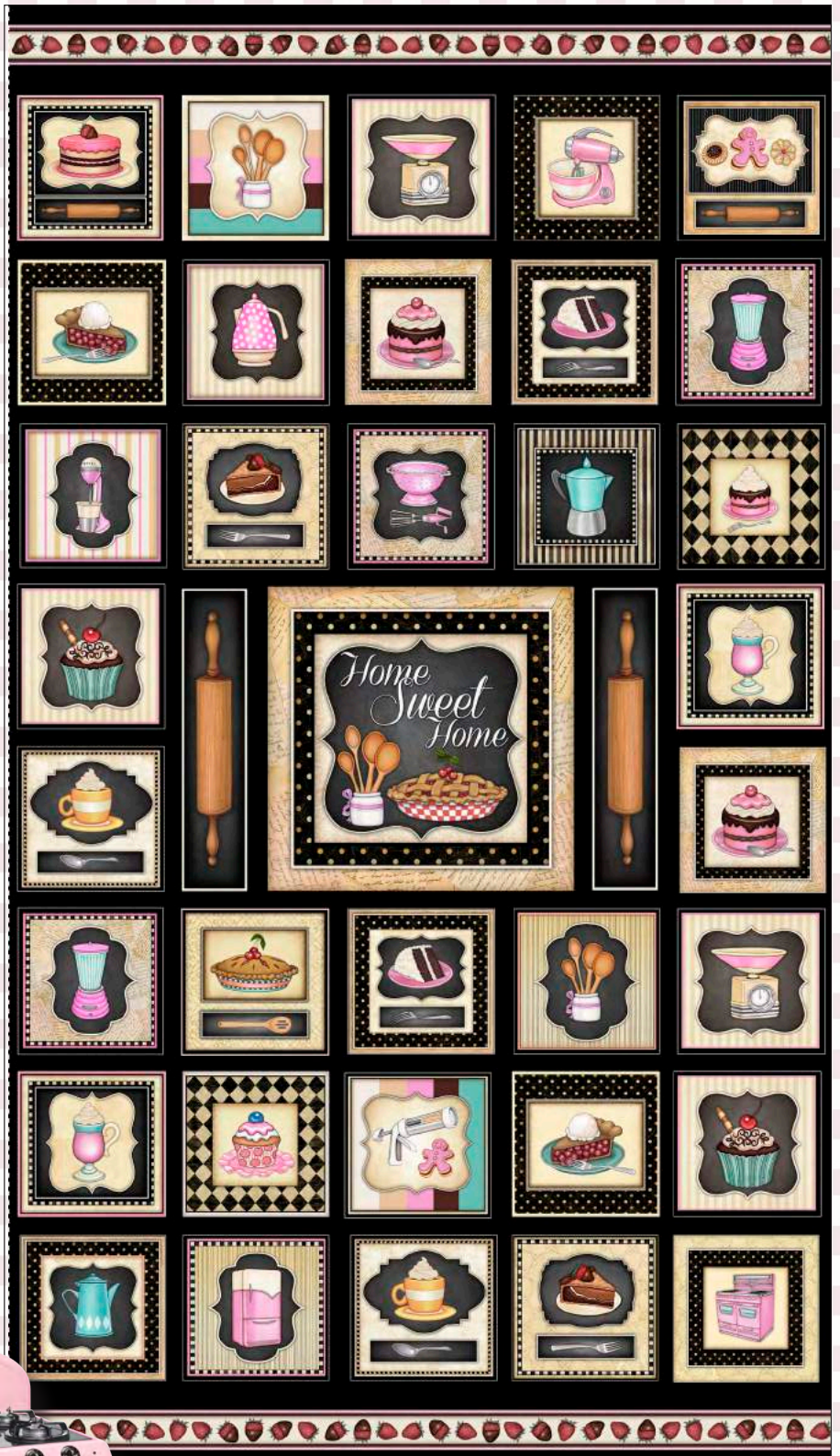
26331 E



26331 P



26331 Q



26324 J



26326 J



26326 E

Orders in by July 15th will ship mid October

Dan Morris



Dan Morris



26323 E

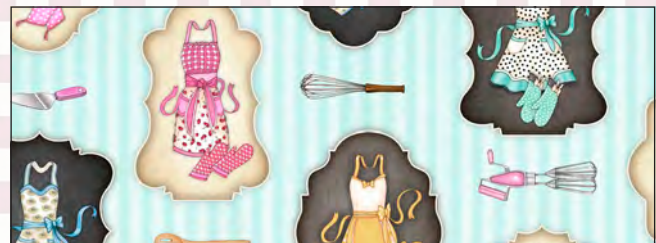


26325 E

26325 J



26327 E



26327 Q



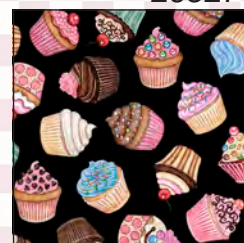
26328 E



26329 E



26328 J



26329 J

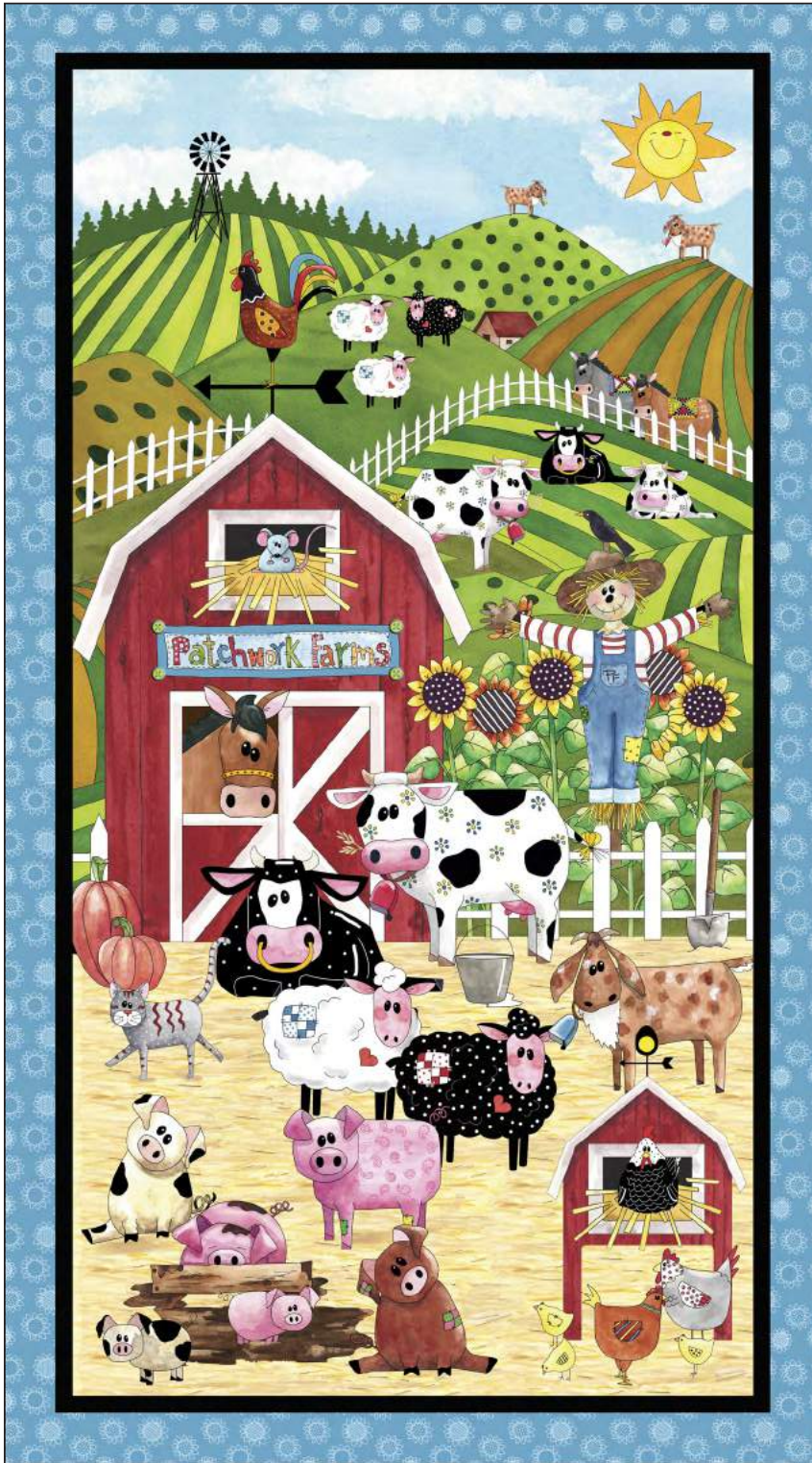


26328 P

Home Sweet Home

Patchwork Farms

It's a busy day at the farm with lots of friends and fun! Decorative bandana print coordinates along with stripes and dots bring colorful punch to these farmyard themed fabrics! The barnyard 24" panel is perfect for a larger feature project!



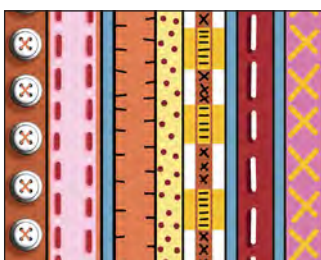
26107 X



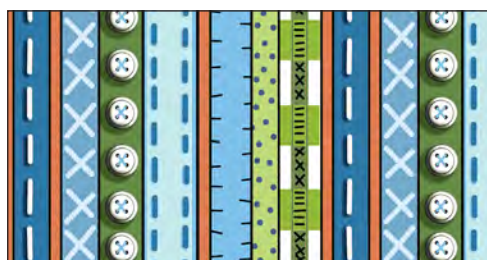
26109 B



26109 Z



26113 R



26113 B

Orders in by July 1st will ship mid September



	26108 Z				26108 J	
26112 B		26112 Z		26112 S		26112 R
	26110 R		26110 Z		26110 J	
26114 B		26114 G		26114 P		26114 S
	26111 H		26111 Z		26111 J	
26115 J		26115 G		26115 R		26115 S

Winter Garden

Sarah Summers creates prints that are perfect for seasonal décor and gifts. Her new line showcases chickadees frolicking in a "Winter Garden". The rich red color pops against the soft neutrals of taupe, gray and cream. This collection coordinates beautifully with our Illusions basic collection.



26239 E



26240 J



26240 R

Orders in by July 1st will ship mid September



Sarah Summers



26238 E



26238 K



26242 E



26241 E



26242 R



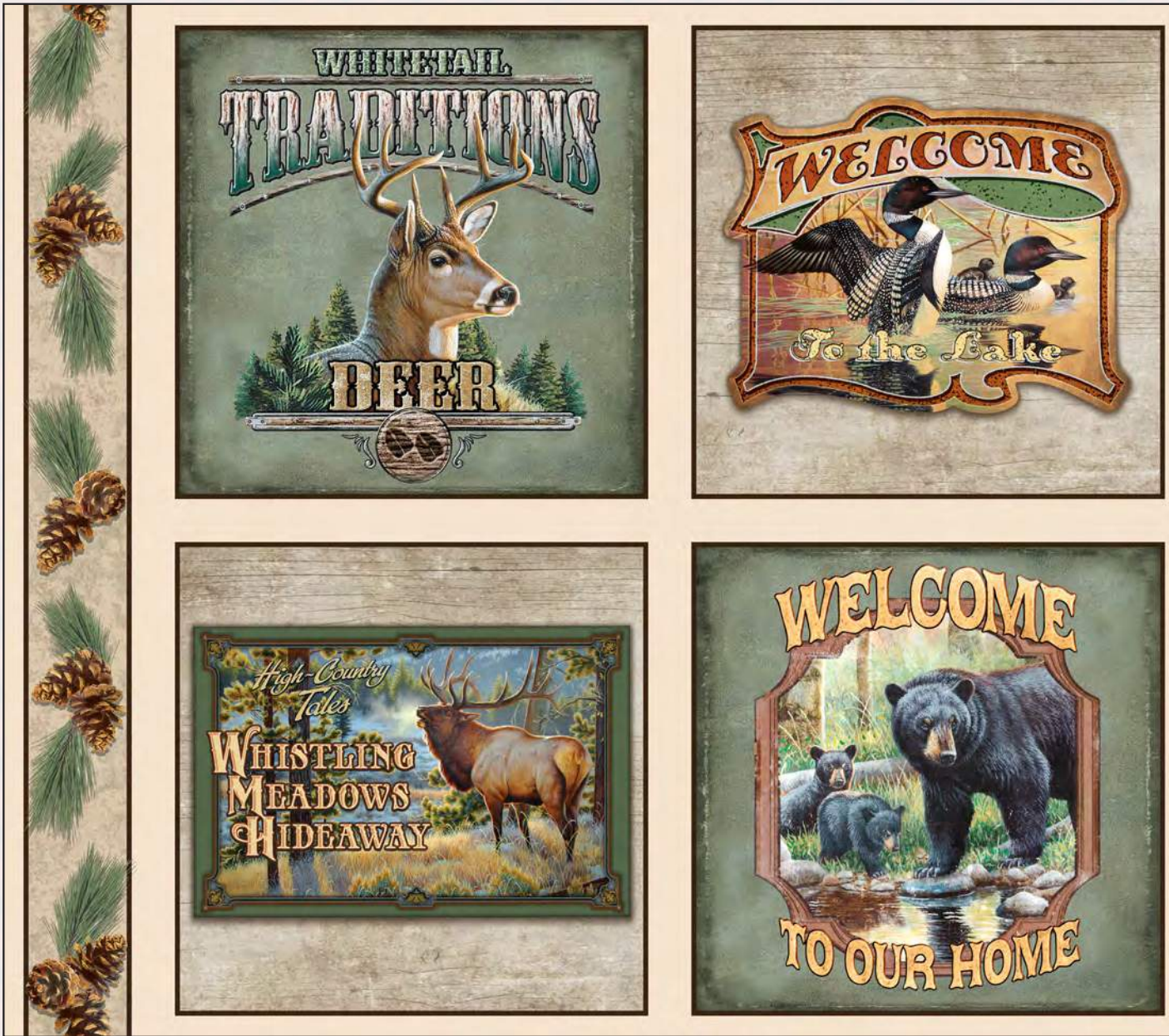
26241 K



26242 K

North Woods

Embrace nature and lodge living with this rustic collection from Cynthia Fisher. Foliage and pine cone prints coordinate well with the badge and patch prints that highlight the lifestyle and coziness of living in the woods. The plaid print provides a great contrast to the nature motifs and is great on its own for décor, apparel and quilts!



26259 E



26261 A



26261 E



26261 F



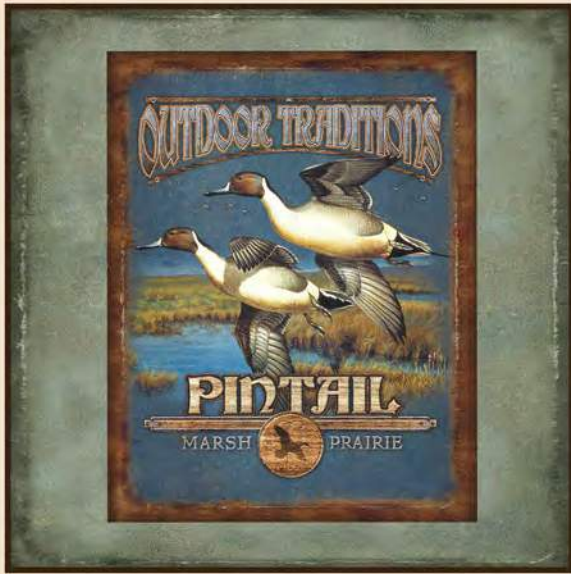
26262 E

Orders in by July 1st will ship mid September

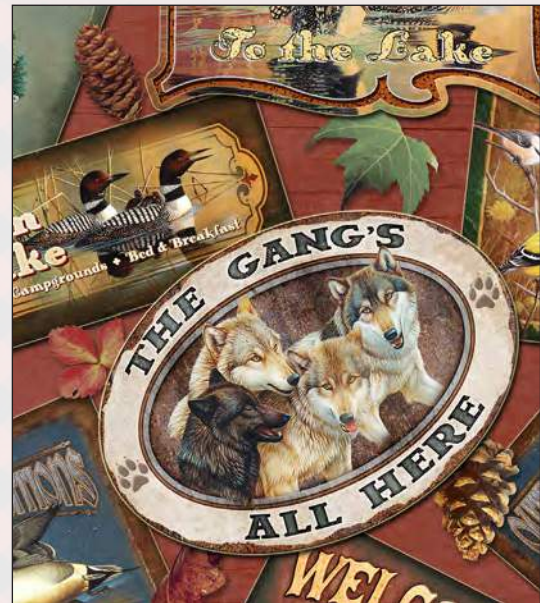


for **JQ**
LICENSING

Cynthia Fisher



26260 E



26260 R



26262 S



26263 G



26263 R



26263 S

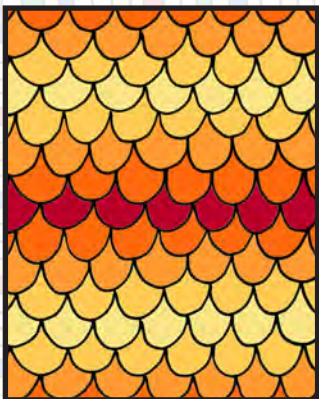
North Woods

HOUSE ON THE HILL

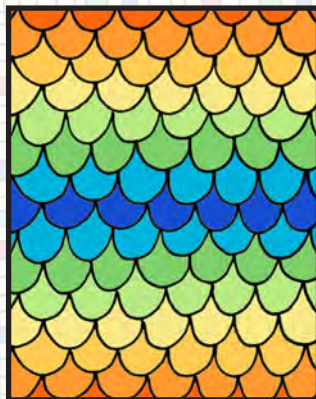
Whimsically inspired prints with mix and match coordinates will create dynamic projects for apparel or home decor. This new collection from Lisa Jane Smith has "coloring book" appeal with a world full of flowers, dots, shells and geometrics to play together that complement the whimsical house designs.



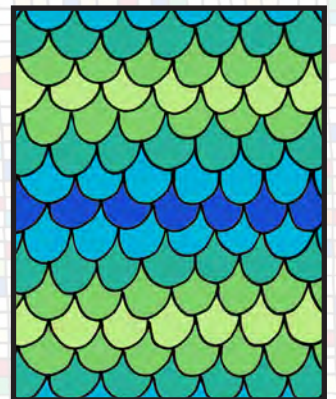
26264 X



26267 SO



26267 X



26267 BG

Orders in by July 1st will ship mid September



lisa jane smith



26265 O



26265 S



26265 Z



26266 R



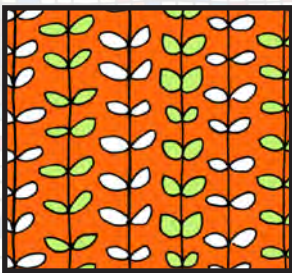
26266 H



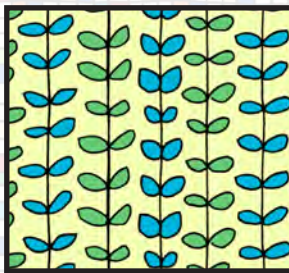
26266 Q



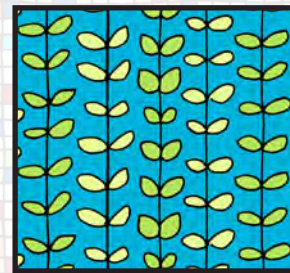
26266 Z



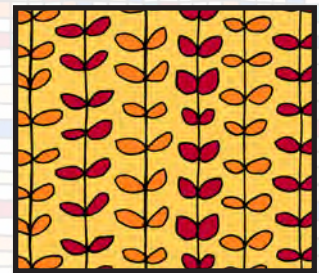
26269 O



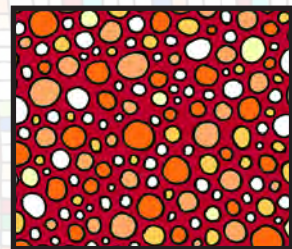
26269 H



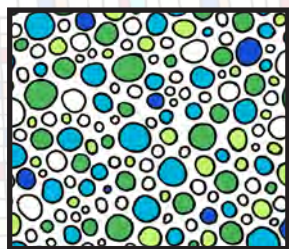
26269 Q



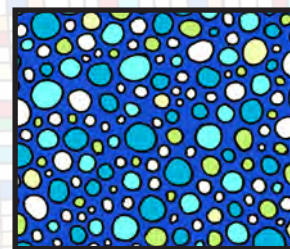
26269 S



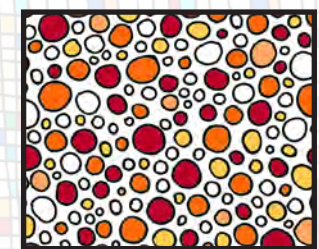
26268 R



26268 ZQ



26268 B



26268 ZR



26270 R



26270 X



26270 B

So Saucy

Now here's an unconventional approach to fruits and veggies! This fun and funky collection from Lisa Jane Smith brings the tattoo trend to your home and kitchen! These illustrative fruits, veggies and coordinates are anything but ordinary. The bright color palette is perfect for projects that pop!



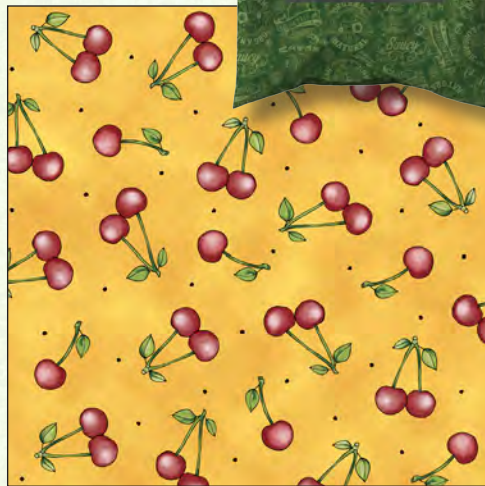
26252 K



26255 J



26255 E



26255 S



Orders in by August 15th will ship mid November



lisa jane smith

Lisa Jane Smith



26253 K



26253 E



26253 J



26256 E



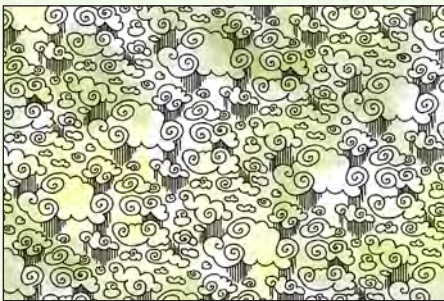
26256 G



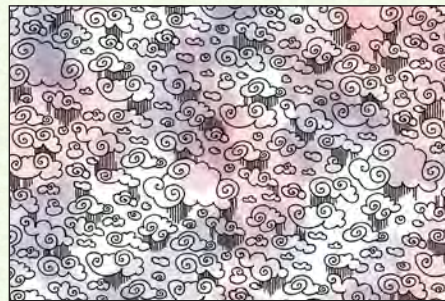
26256 J



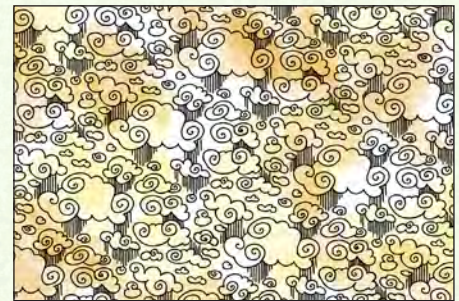
26256 R



26257 G



26257 P



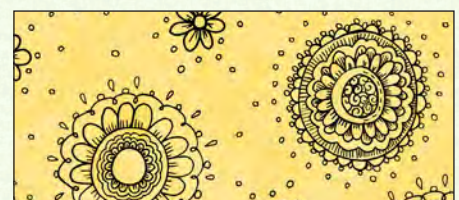
26257 S



26254 G



26254 R



26254 S



26258 J



26258 Z

So Saucy

Love Grows Here



26298 H



26301 H



26301 R



26301 S



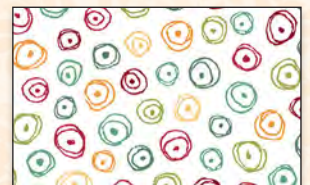
26302 H



26302 R



26302 S



26302 Z



Orders in by August 15th will ship mid November



karla
dornacher

Karla Dornacher

Karla Dornacher brings a sweet message of love to us with her pretty prints. In an enchanting color palette of teal, red, gold and cream, this lovely collection offers many options to create a heartfelt project! The triptych panel allows for various home décor options like pillows or wall hangings, while the coordinate fabrics are beautiful together or on their own.



26299 H



26299 R



26299 S



26300 G



26300 R



26300 S

Love Grows Here

Hatters Tea Party

It's always tea time with Janet Wecker Frisch's new collection! Overflowing with great illustrative style and ephemera. Combined with roses and derby hats, this nostalgic group of fabrics has lots of flair. Would you care for one lump... or two

A Hatters Tea Party

Tea Co. June 9th, 1898.

Tea Co.,

ST. 94 WAS

part of the

will

invitation,

welcome.

Wednesday Evening

Friend, Langford.

The Great Atlantic and Pacific Tea Co.

IMPORTERS

... 200 Stores in U. S. ...

Headquarters, 35 & 37 Vesey Street, New York.

Orders in by July 15th will ship mid October



TIDINGS OF GREAT JOY
Janet Wecker-Frisch

Janet Wecker-Frisch



26146 X



26150 K



26150 P



26151 K



26151 E



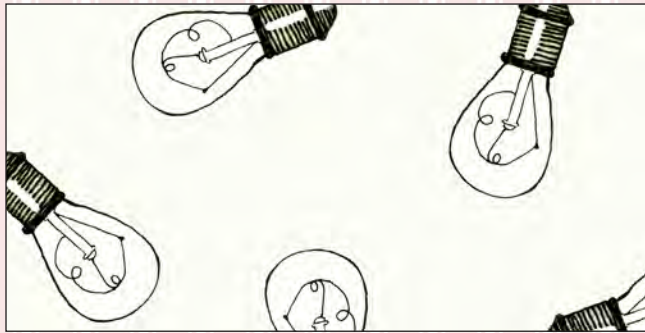
26151 J

Hatters Tea Party

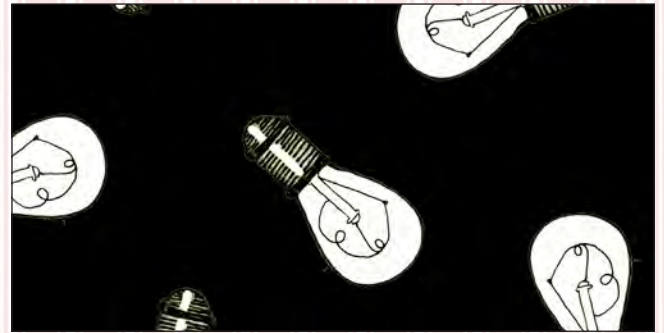
Hatters Tea Party



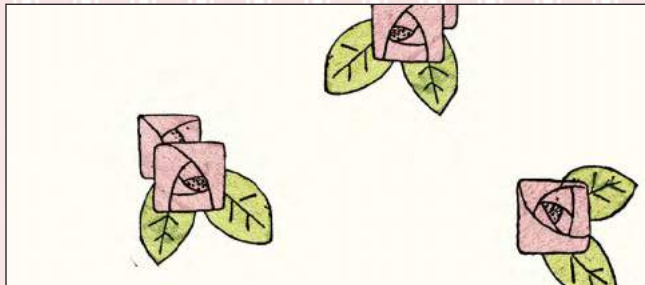
26148 X



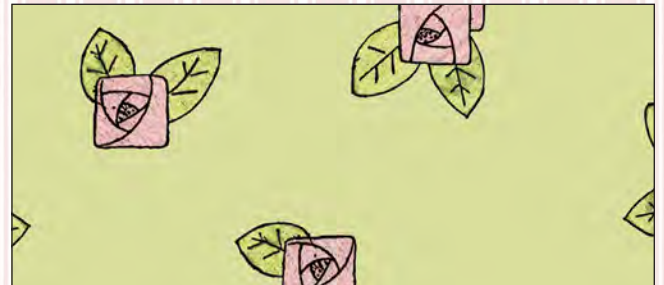
26154 E



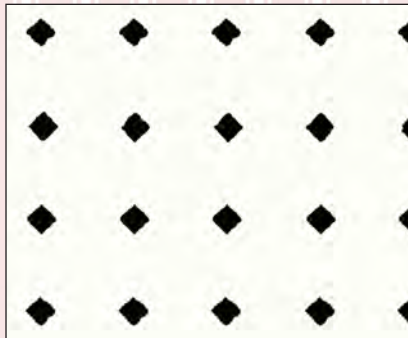
26154 J



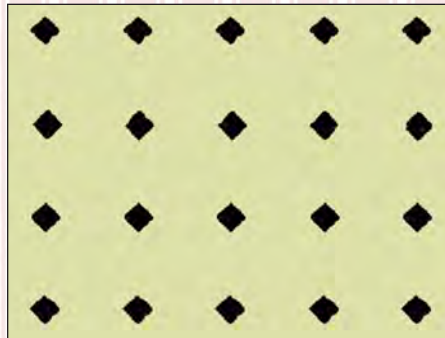
26153 E



26153 H



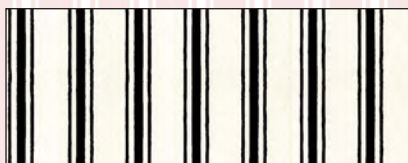
26156 E



26156 H



26156 P



26155 J



26155 K



26155 P

Orders in by July 15th will ship mid October



Janet Wecker-Frisch

Ask for LARSEN BROS. & Co.'s PURE and HEALTHY Soaps. No artificial
 greens or adulterating material used in manufacturing them.

S. H. PERRY,
 DEALER IN
GENERAL MERCHANDISE,
 VERSAILLES N. Y.

The Correct Method of Preparing Tea

For a really "Cup of Good Tea,"
 the **Kettle** must be filled with **Fresh** water and
Boiled quickly for about Five Minutes.
 There will be a sparkle about Tea made from
 fresh boiled water that it will not receive from
 the hot water that has been boiled long and
 repeatedly. For Moderate Strength, it re-
 quires One Teaspoonful of Good Tea to half
 a pint of boiling water. An ordinary tea-cup
 half full to a quart of water will make a
 strong infusion for five persons. An Earthen
 or China Pot is the best vessel for drawing Tea.
 It must be first "Scalded" out and set on the
 range to dry, and keep hot. Then put the
 Tea in, allowing to heat for a few minutes,
 adding the boiling water just **Ten Minutes**
 before it is wanted to be poured out.

TEA-NECTAR requires about twenty
 minutes before using.

(The Great Atlantic and Pacific Tea Co.)
 whose name has become a by-word in every house-
 hold where PURE TEAS AND COFFEES are
 appreciated,
**Don't fail to call at our stores and
 procure a copy.**

The Great Atlantic & Pacific Tea Co.,
 92 COURT ST. OPP. BOSTON BOSTON
 694 WASHINGTON ST. BOSTON
 1078 TREMONT ST. BOSTON
 305 WEST BROADWAY SOUTH BOSTON
 109 MERIDIAN ST. EAST BOSTON
 292 BROADWAY CHELSEA.

26147 X

KENNY'S
 26 Cortl
 ST. UP

Derbys of the
 \$
 Elsew
 SPECIALTY

FRATTS NEW DOWN
 SEWING
 They have the
 The name of
 of America and
 give satisfaction.
 Shipping done
 per parcel, for
 Satisfaction,
 Suburban,
 Also, the very best Oil

C.A.
 WARRIDGE INVITATION
 ENGRAVED
 L. H. BRAD
 231 WASH
 BOSTON

THE INSTITUTION
 Manufacturers and
 Addresses. Teahy
 ENTRY 2
 Case Chairs Seated, Kider of
 Churns and Stove Co
 Office, 30 Broad
 The New England
 Contains list of pro
 fessors of various works, of
 WASHINGTON or NEW YORK
 of the Secretary, B.A.S.

FOR THE BLIND,
 Beds, Polo Cushions,
 & Co., &c.
 100 Broadway, New York.
 Sweeper in the market.

AND ADDRESS CARDS
 PRINTED BY
 ORD & CO.,
 108 MAIN ST.,
 BOSTON.

FOR THE BLIND,
 Beds, Polo Cushions,
 & Co., &c.
 100 Broadway, New York.
 Sweeper in the market.

SALE Medical College
 and medicine. Discharge
 now available on the Street
 of which can be ob-
 GREGORY, M. D., Boston.

OUR SPECIALTIES ARE
COFFEE & TEAS

We invite the attention of all consumers of these
 goods to our selections, which are made with great care,
 and with a desire to give satisfaction to all who may
 favor us with a trial.

CROCKERY GLASSWARE AND FANCY ARTICLES GIVEN AWAY
 TO ALL PURCHASERS

C. M. REMER, MANAGER CHINA TEA STORE,
 110 1/2 GENESEE ST. AUBURN, N. Y.

**Hooray! I've been to
 CHARLES K. HENION'S.**
*I never saw finer Goods. They treated
 me like a lord, and gave me bargains
 that made me laugh till I cried!*

COME AND SEE!
 The Finest Line of Presents ever offered with
Teas, Coffees, Spices & Baking Powder.
 Your choice from Two Hundred
BEAUTIFUL PRESENTS.
 With one pound of TEA or BAKING POWDER.

L. W. OAGLEY, the TEA MAN,
 108 MAIN ST., PAINESVILLE, O.
 WILL SAVE YOU MONEY ON GOODS
 WHOLESALE AND RETAIL.

LOOK WELL TO YOUR HEALTH.
DRINK ONLY PURE GOODS.

NEW TEAS. Delicious Roasted Coffees,
 20, 13 & 25c.

PURE SUGARS SOLD AT COST.
THE CT. ATLANTIC & PACIFIC TEA CO.
 300 Store in U. S. Bank/Box, 25 & 27 Young St., N. Y. City & P. O. Box 12, N. Y.

26147 E

**DR. WARNER'S
 COUSIN**

NO MORE
 SECRETS WHAT YOU
 CALL COUSIN

**M.D. HATTER,
 the TEA MAN,**

108 MAIN ST.,
 WHEN YOU CAN SEND TO
**THE GREAT AMERICAN
 Tea Company,**
 31 & 33 Vesey St., N. Y.,
 and get Pure
TEAS & COFFEES,

**The Milkhart
 PAPER PAIRS**

Are wound, therefore are
 absolutely seamless, are very
 light, are shapely, and are
 elegantly finished, and an orna-
 ment to any household.

They are the best Pail manu-
 factured for any use.

For Sale by all First-Class Grocers.

GUARANTEE.
 Any Lady purchasing one of
 our Pail will receive a Certificate which breaks
 our "Milkhart" ordinary wear in a year.
 If it is more pliable than whalebone, and so adapt
 more readily to the movements of the body. The
 is much more comfortable and healthful.
 It is not affected by cold, heat or moisture.

DRY GOODS.
 Notions, Etc.,
 PAINESVILLE, O.

**DR. WARNER'S
 COUSIN**

It cannot be broken.
 A REWARD OF \$1000
 is paid for every strip of Cousin which breaks
 our "Milkhart" ordinary wear in a year.
 It is more pliable than whalebone, and so adapt
 more readily to the movements of the body. The
 is much more comfortable and healthful.
 It is not affected by cold, heat or moisture.

**DR. WARNER'S
 COUSIN**

It cannot be broken.
 A REWARD OF \$1000
 is paid for every strip of Cousin which breaks
 our "Milkhart" ordinary wear in a year.
 It is more pliable than whalebone, and so adapt
 more readily to the movements of the body. The
 is much more comfortable and healthful.
 It is not affected by cold, heat or moisture.

26147 A



26149 K



26149 E



26152 B



26152 P



26152 K

Hatters Tea Party

Birds of a Feather

Pretty flowers, sweet birdhouses and little ladies combine for a lovely group of fabrics by Santoro's Gorjuss.



26203 X



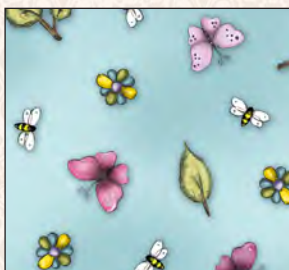
26205 G



26205 H



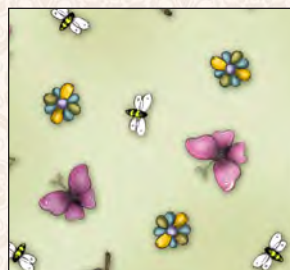
26205 S



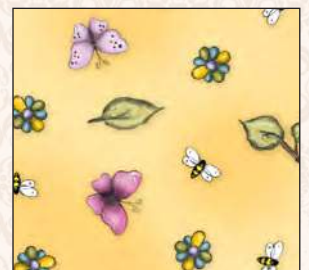
26206 B



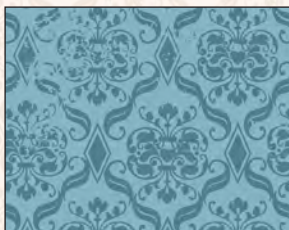
26206 E



26206 G



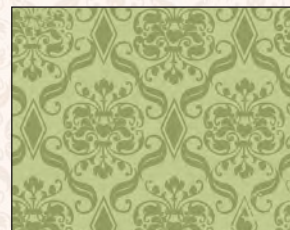
26206 S



26207 B



26207 E



26207 G



26207 S

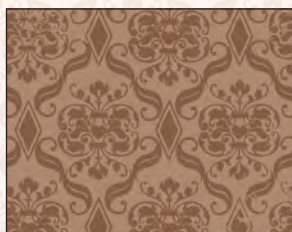
Orders in by August 15th will ship mid November



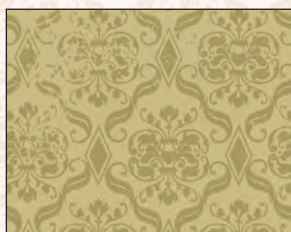
26204 E



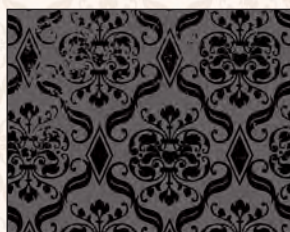
26204 S



26207 A



26207 H

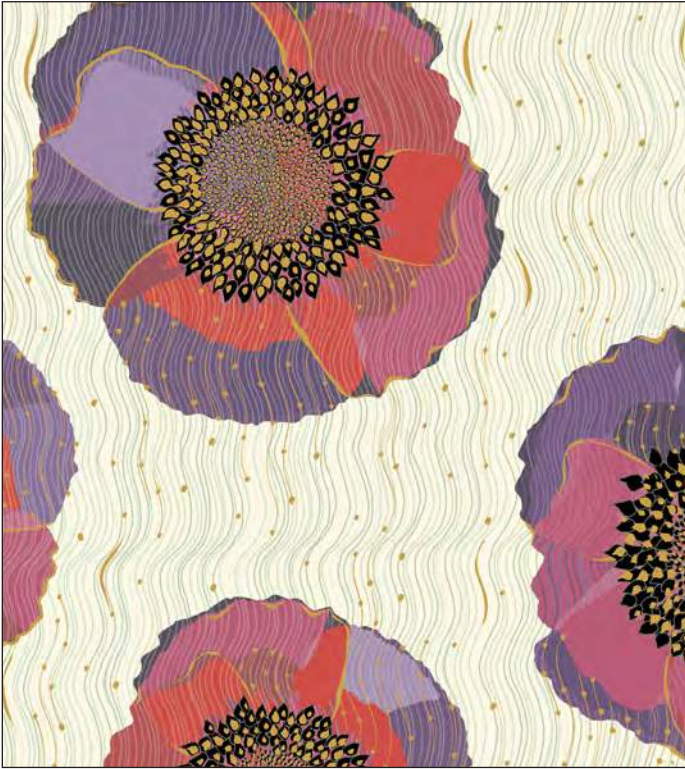


26207 J



Bellisima

Stylized poppy florals and structured geometrics are accented with metallic gold throughout to make this a sophisticated and fashionable collection! Bold in color and print design, this stylish group is one of the inaugural collections from Turnowsky. It will create a striking project for home décor or apparel!



26208 E



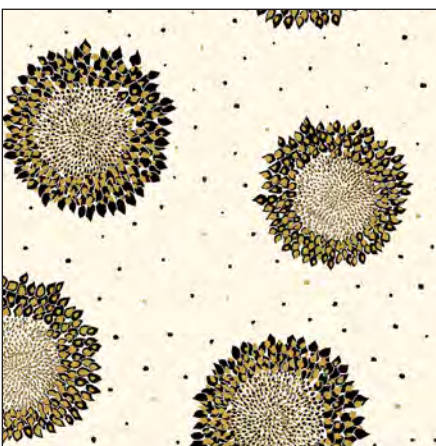
26208 J



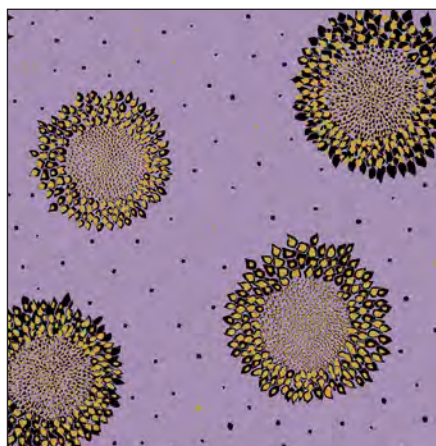
26209 E



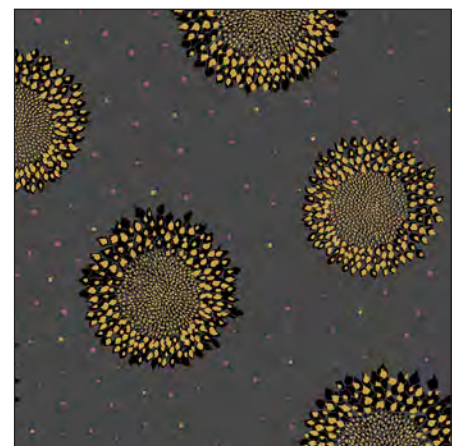
26209 J



26210 E



26210 L



26210 J

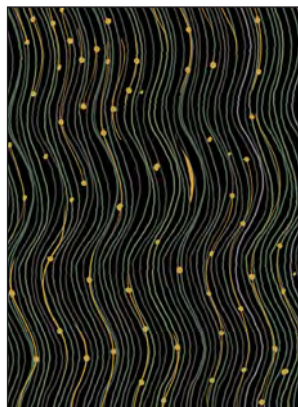
Orders in by July 1st will ship mid September

TURNOWSKY
S I N C E 1 9 4 0

ALL DESIGNS HAVE METALLIC



26213 E



26213 JG



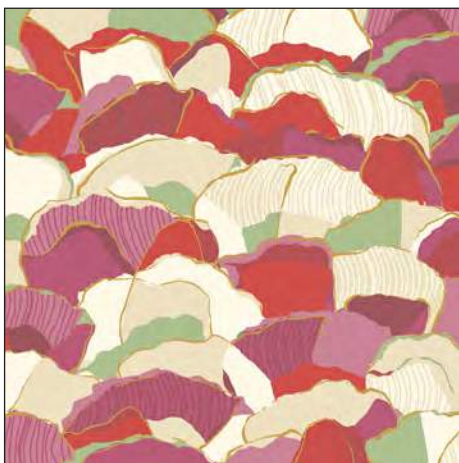
26213 JP



26212 E



26212 J



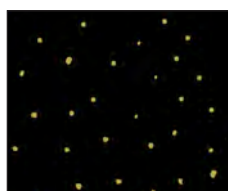
26211 E



26211 J



26214 E



26214 J



26214 L



26214 P

All rights reserved by Turnowsky

Party Animals

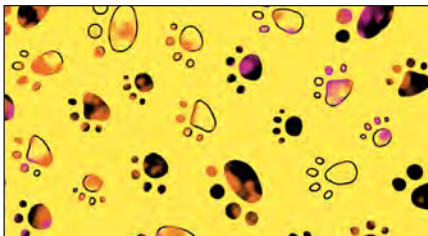
This introductory collection from Turnowsky features stylized dogs & cats in vivid color and bold patterns. Fun geometric prints are great stand-alone designs that compliment the other dynamic motifs. All will create lively project opportunities that are sure to bring a party atmosphere!



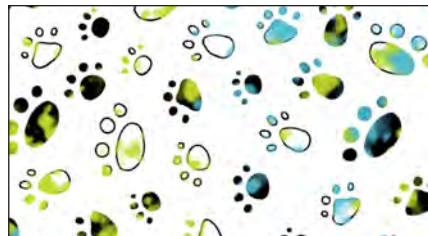
26220 J



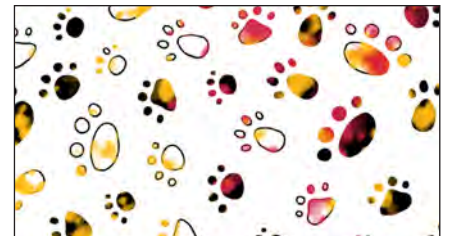
26220 Z



26222 S



26222 ZB



26222 ZR



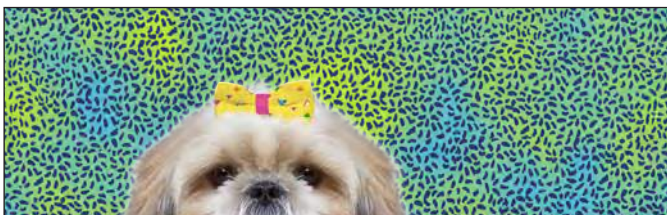
26223 S



26223 J



26223 Z



26226 HB



26226 B



Orders in by July 15th will ship mid October

TURNOWSKY
S I N C E 1 9 4 0

Turnowsky



26221 J



26221 Z



26224 J



26224 S



26224 Z



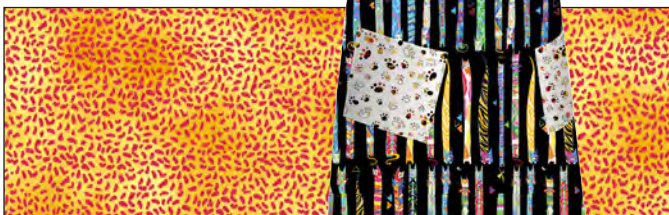
26225 J



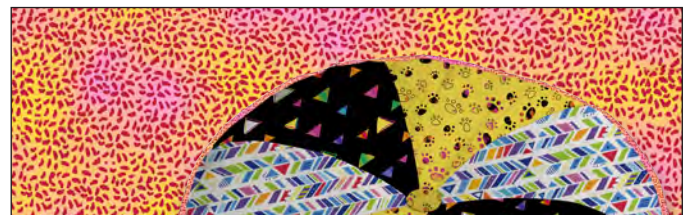
26225 S



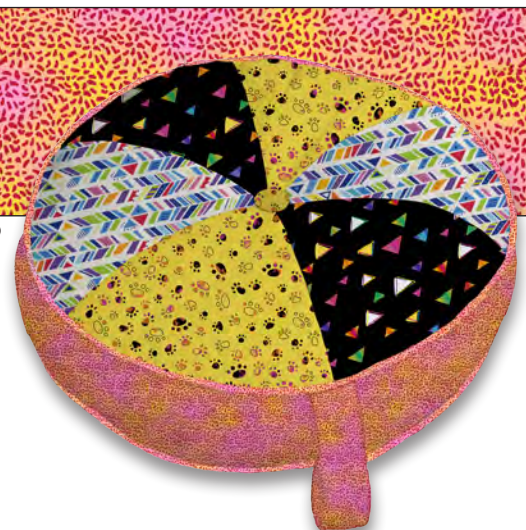
26225 Z



26226 O



26226 OP



All rights reserved by Turnowsky

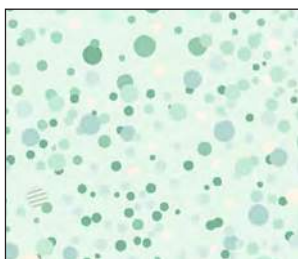
Party Animals

Confetti Blossoms

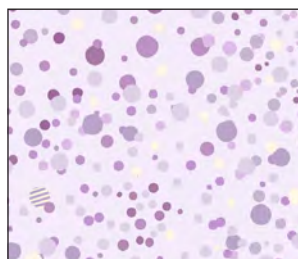
Delicate blossoms ... painterly brushstrokes with dancing butterflies ... dots all charm in this inaugural collection by Turnowsky. This fresh color palette of soft pastels mixed is mixed with mid-tones to be perfect for spring décor, home accents and accessories!



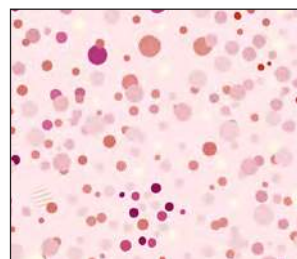
26233 H



26237 H



26237 L



26237 P



26237 Z

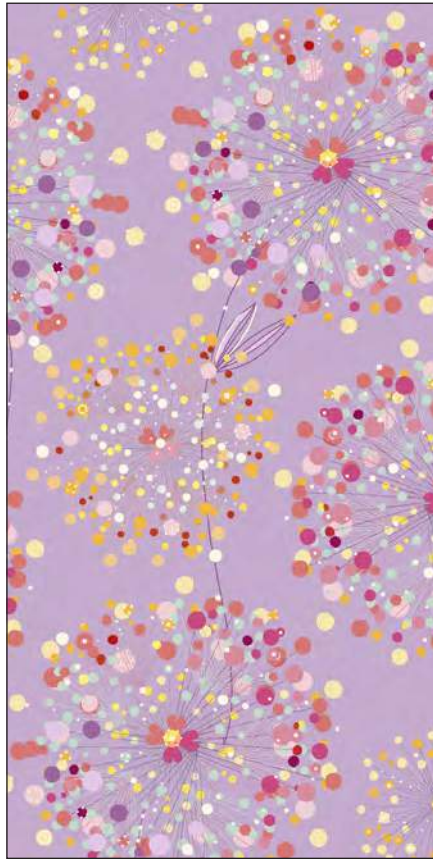
Orders in by August 15th will ship mid November

TURNOWSKY
S I N C E 1 9 4 0

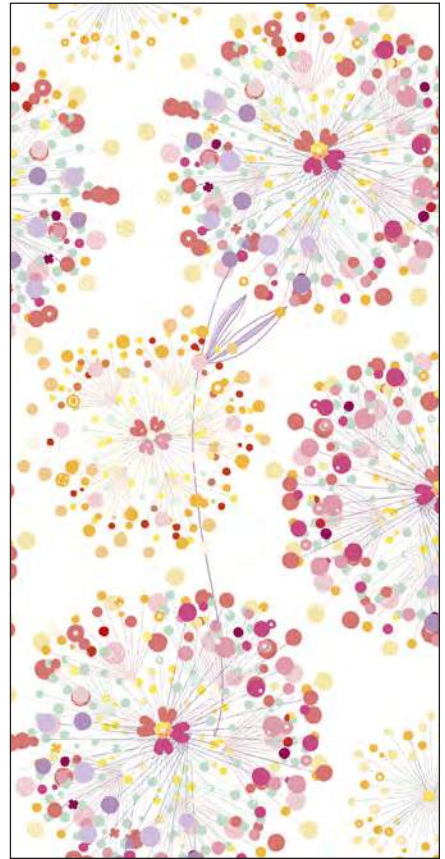
Turnowsky



26234 H



26234 L



26234 Z



26235 H



26235 P



26236 H



26236 P



26236 X

All rights reserved by Turnowsky

Confetti Blossoms

ARTWORKS

Fabric as art! Gorgeous artwork is recreated as digitally printed fabric panels capturing the subtleties of the original design. Your home gallery awaits!



26243 B

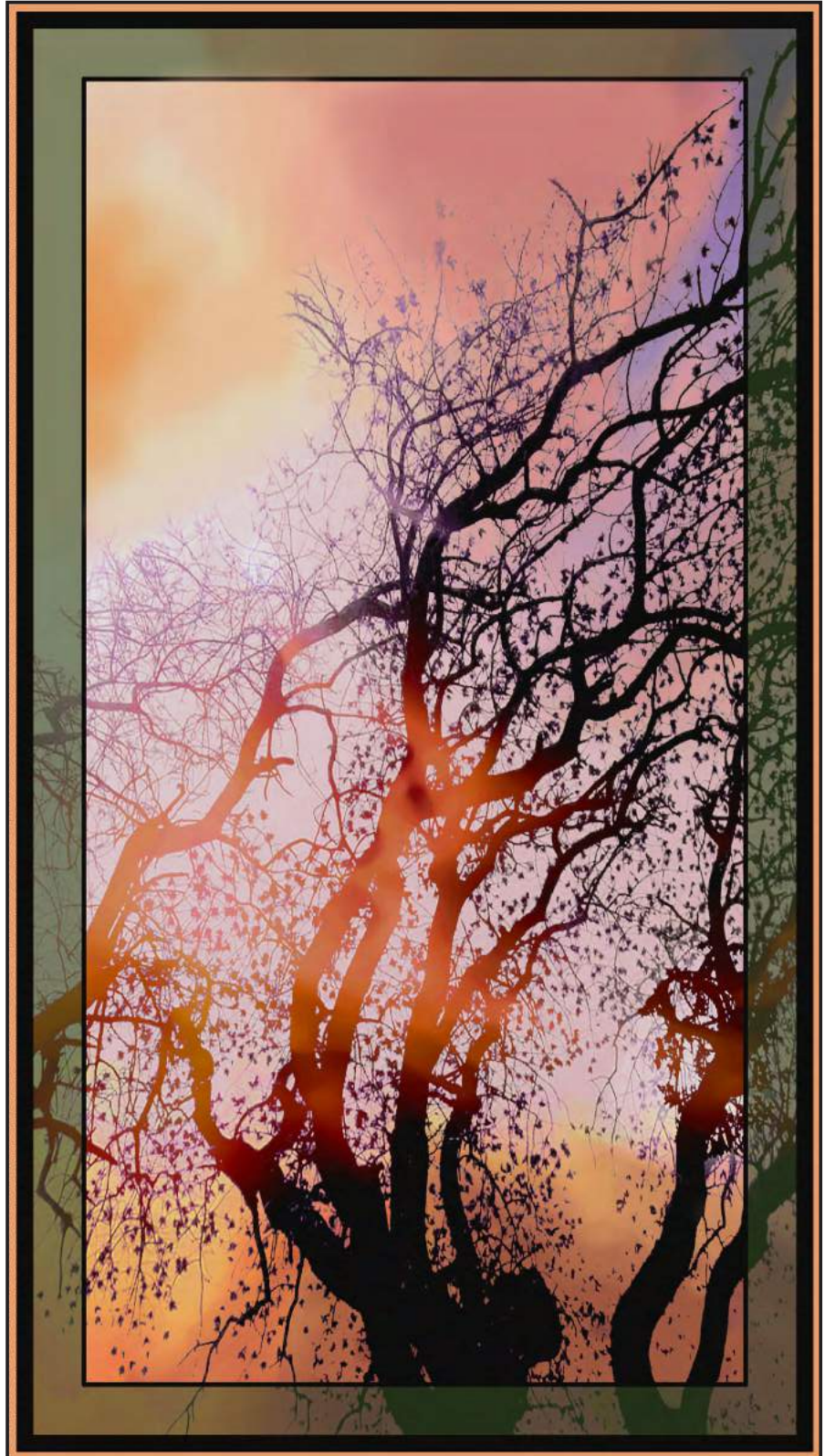
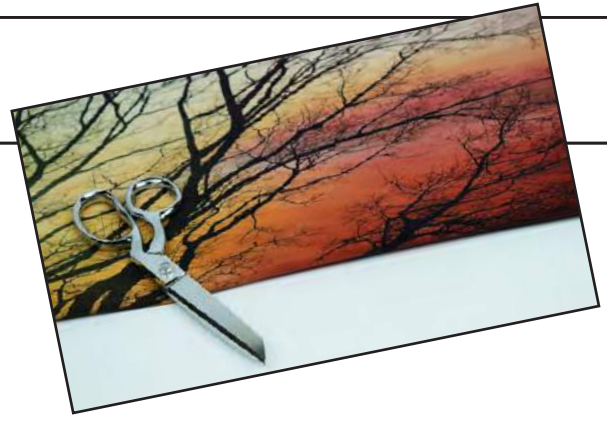


26244 B



26244 BZ

Orders in by July 15th will ship mid October



26277 X



antiquities



Bethel

These archival prints come together splendidly in both color and pattern. Sophisticated colors of auburn, coral, teal and cream harmonize in the intricate florals and paisley prints. A collection that is classic yet has modern flair. This group is ready to create the types of fashion and home décor as you would find in chic boutiques.



26245 A



26245 E



26245 Q



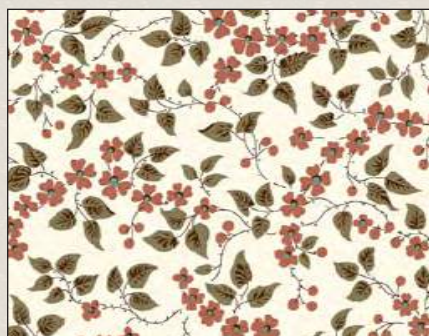
26247 A

26247 E

26247 Q



26248 T



26248 E



26248 Q

Orders in by July 15th will ship mid October

antiquities

Antiquities



26246 A



26246 Q



26249 A



26249 E



26249 Q



26249 QZ



26250 A



26250 Q



26250 T



Bethel

← INK & ARROW →

F A B R I C S



Junebee



FOR INK & ARROW FABRICS



Say Cheese

This retro inspired camera-rama collection will have you feeling ready for your close-up and want to snap a selfie! When you click or snap your pic, you've gotta say Cheddar, umm... oops, we mean, "Say Cheese" please!



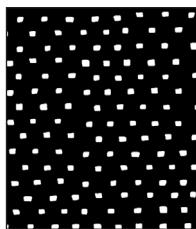
26333 E



26333 Z



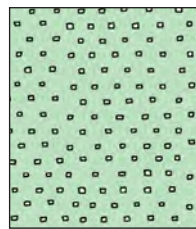
24299 E



24299 J



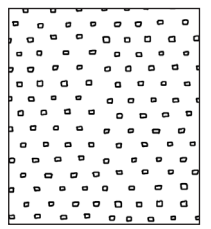
24299 O



24299 QZ



24299 S

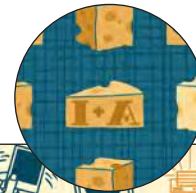
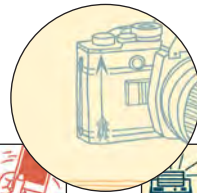


24299 Z

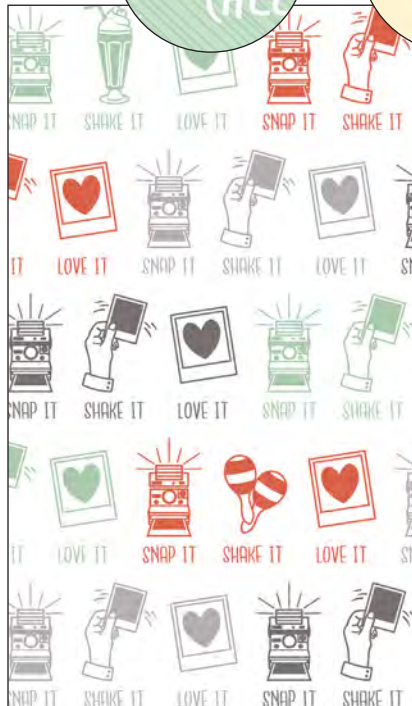
Orders in by August 15th will ship mid November



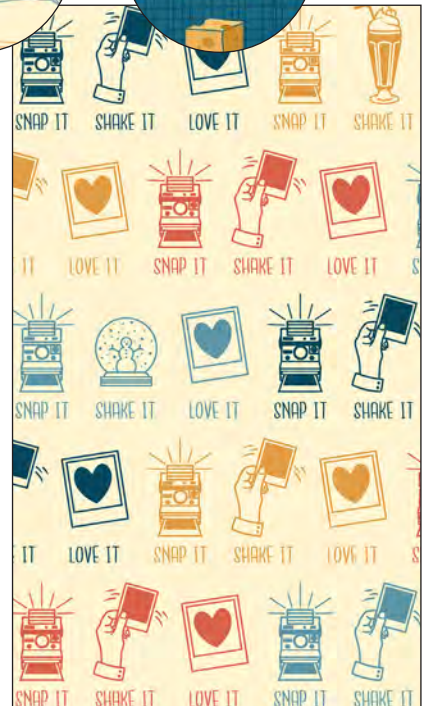
look for us in every print



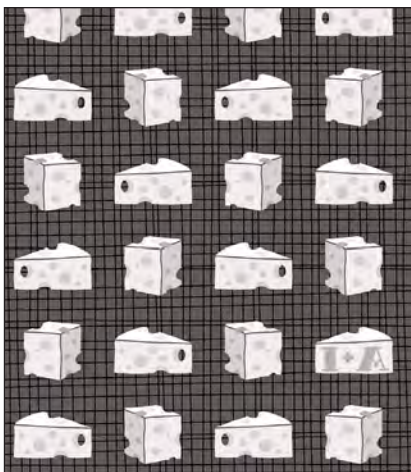
26335 J



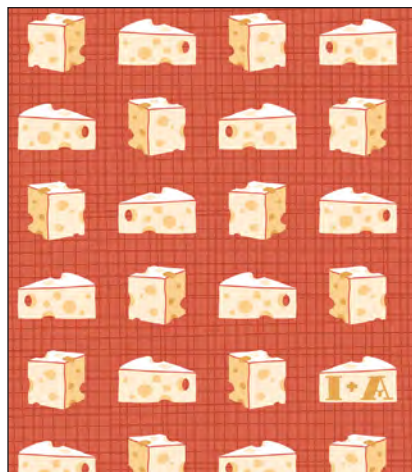
26335 Z



26335 E



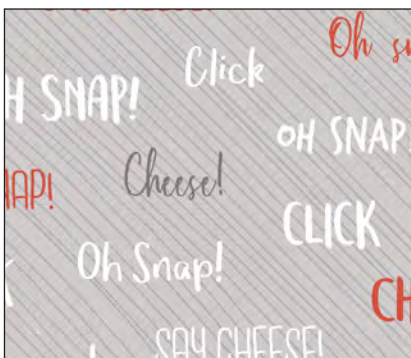
26334 J



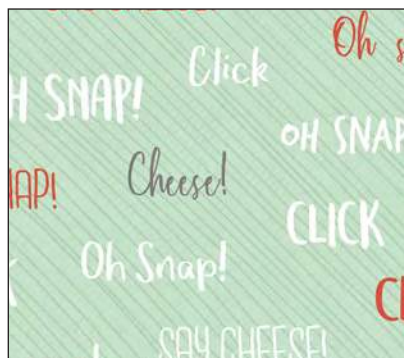
26334 O



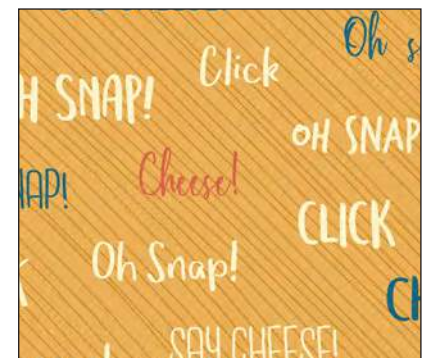
26334 Q



26336 K



26336 Q



26336 S

Melodie

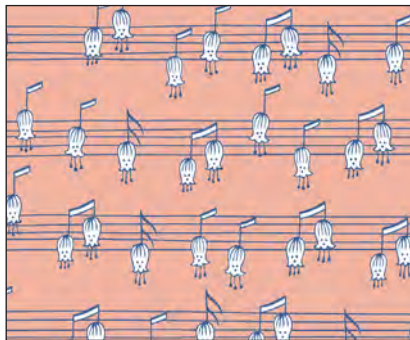
Floral notes and musical instruments delicately harmonize in this rhythmical collection. The mellifluous palette of coral and navy brings together a symphony of print and color ... all conducted by the sweet styling of Ink & Arrow!



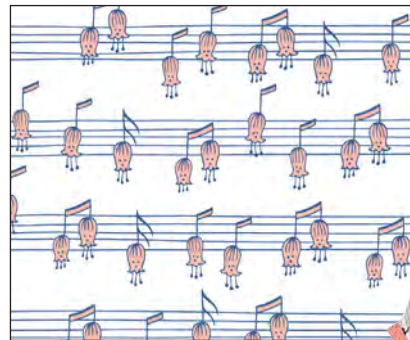
26307 C



26307 N



26310 C



26310 Z



26310 W



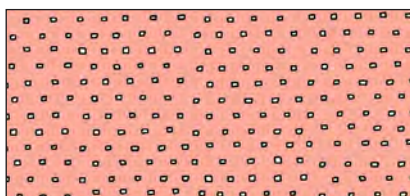
26311 C



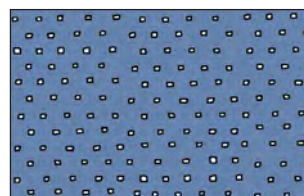
26311 Z



26311 N



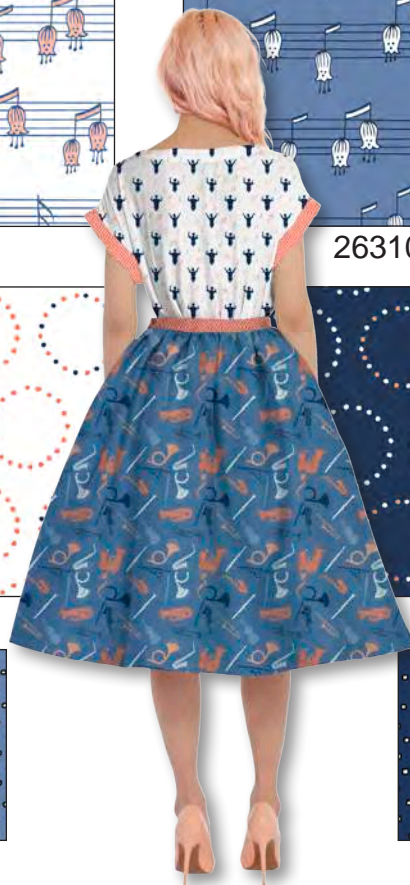
24299 P



24299 W

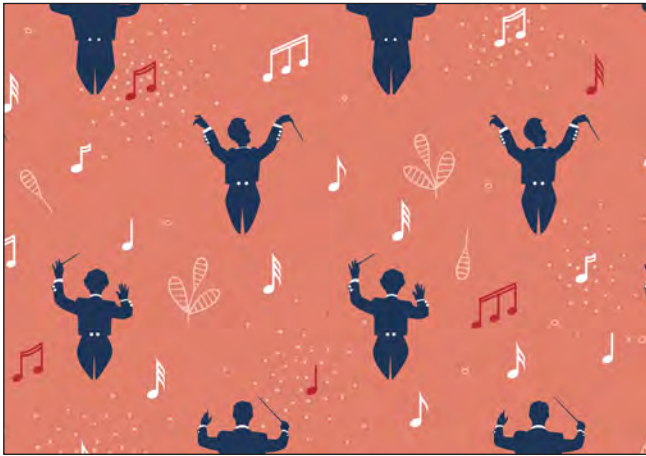


24299 N



Orders in by July 1st will ship mid September

look for us in every print



26309 C



26309 Z



26308 W



26308 Z



26308 N



ASHTYN

A mélange of vivid color and bold prints combine with a variety of scales. Dots sprinkled throughout create specks of color and give a textural effect to the florals and paisleys. Mixing and matching these prints will result in sophisticated yet carefree projects perfect for apparel, accessories and home décor.



26278 V



26278 N



26280 V



26280 O



26280 N



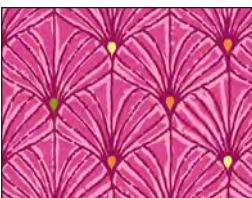
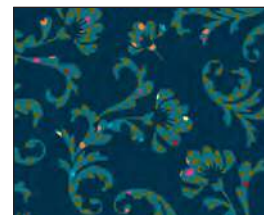
26283 V



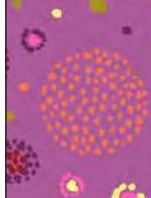
26283 P



26283 N



26282 P



26281 V



26282 O



26281 O



26282 Q



26281 Q

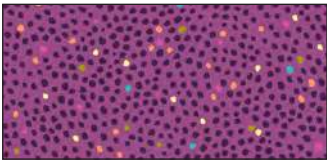
Orders in by August 15th will ship mid November



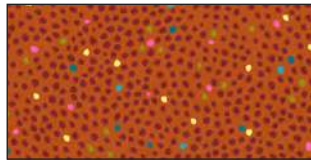
26279 V



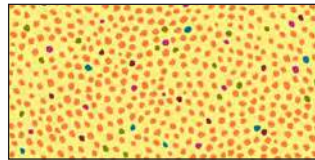
26279 Q



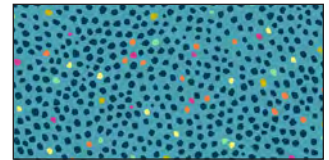
26284 V



26284 O



26284 S



26284 Q



26106 HB



26106 SH



26106 SO



26106 OP



Hayden

In an overprint style, these fashionable prints combine strong color and design. Unexpected pairings of bold zig zags with delicate dragonflies and illustrative florals with painterly dots give a contemporary style to this vogue group.



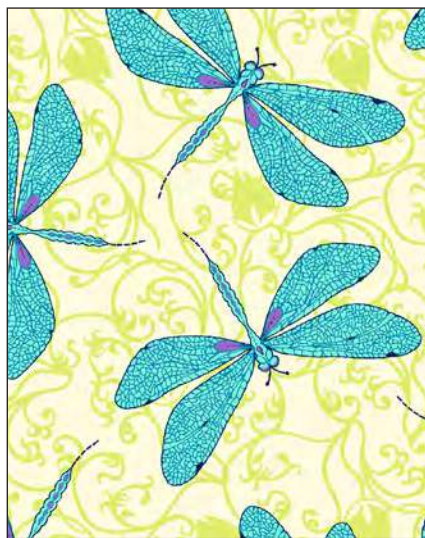
26303 H



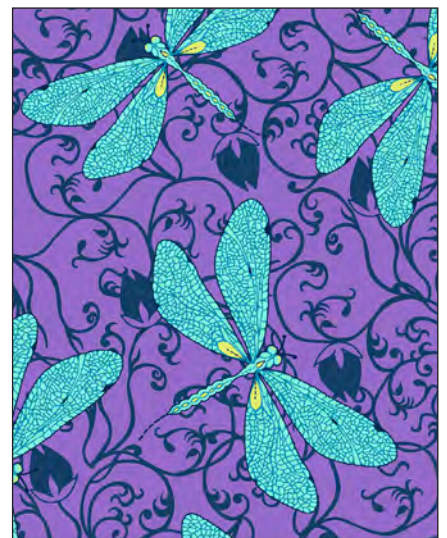
26303 Q



26304 B



26304 E



26304 V

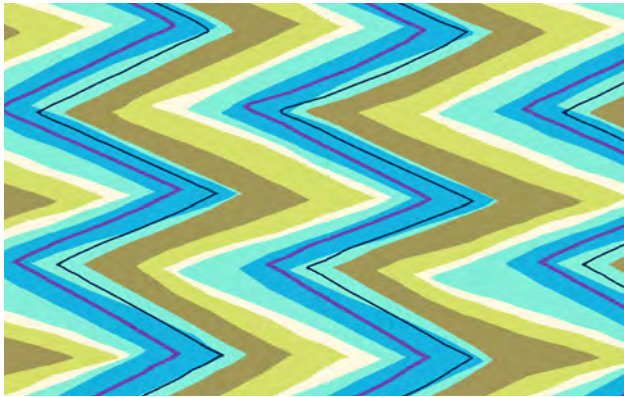


26106 EQ

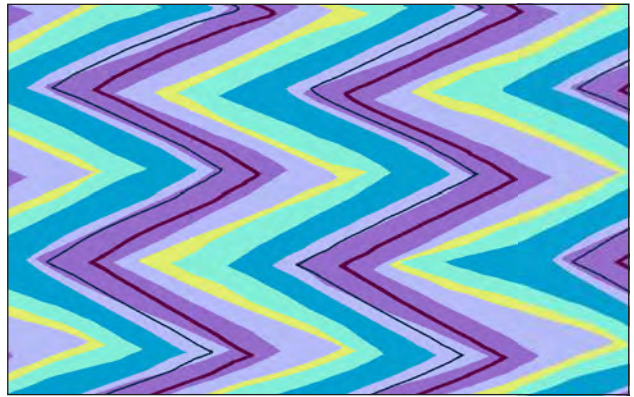


26106 EH

Orders in by July 15th will ship mid October



26305 H



26305 V



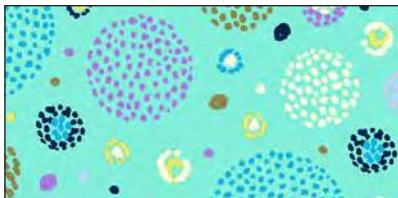
26306 B



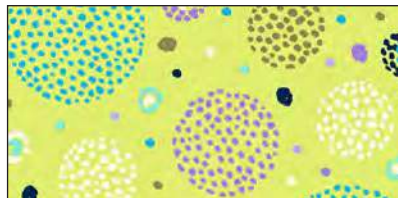
26306 H



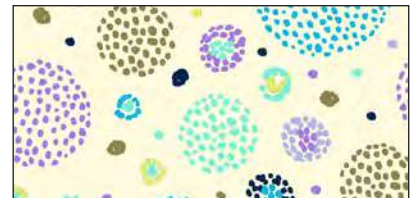
26306 V



26281 QZ



26281 H



26281 E



Ellery

Honeycomb geometrics, a painterly leopard-paisley as well as bumblebee motifs dazzle alongside a stunning floral for an avant-garde blend of prints. This collection provides a look into a radiant abstract garden in striking colors.



26285 X



26286 E



26286 B



26286 J



26106 SO



26106 HY



26106 SR

Orders in by July 1st will ship mid September



26287 EP



26287 EB



26287 J



26288 E



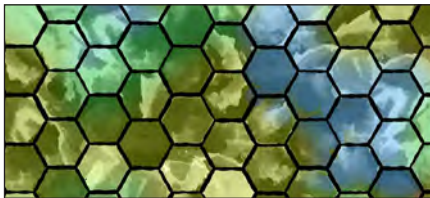
26288 B



26288 J



26289 X



26289 G



26289 P



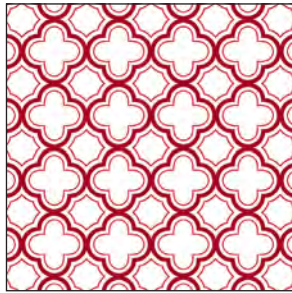
Sorbet Essentials

Red

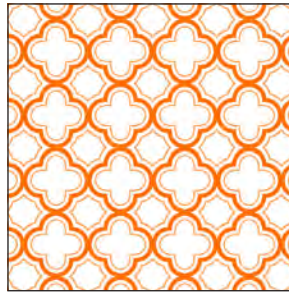
Orange

Yellow

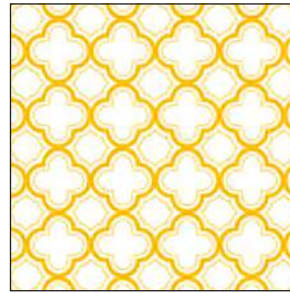
Green



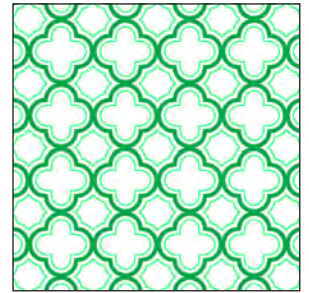
23688 R



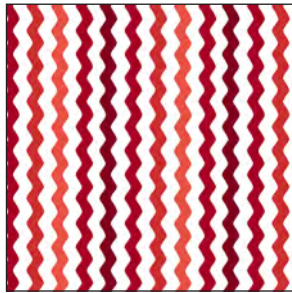
23688 O



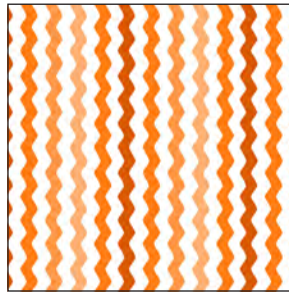
23688 SZ



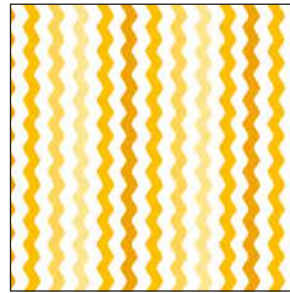
23688 G



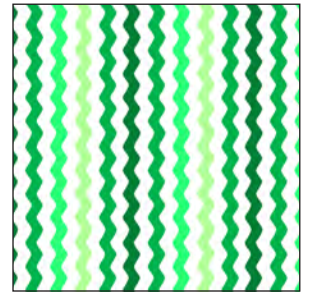
23689 R



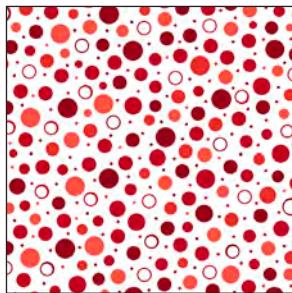
23689 O



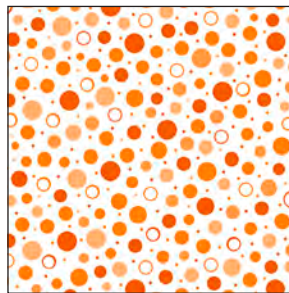
23689 SZ



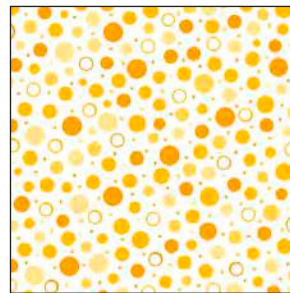
23689 G



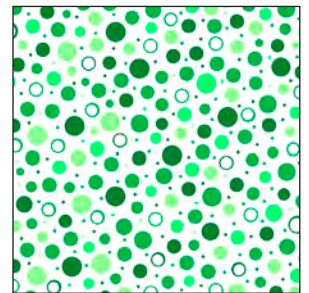
23690 R



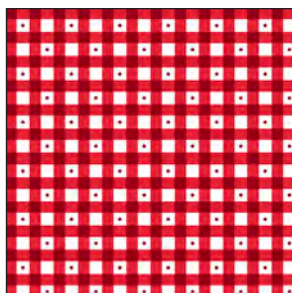
23690 O



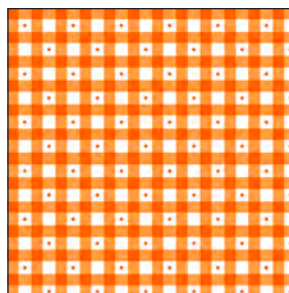
23690 SZ



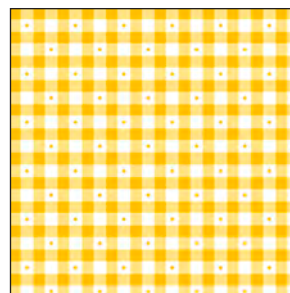
23690 G



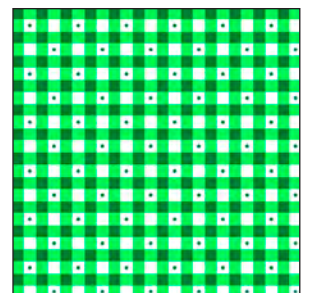
23691 R



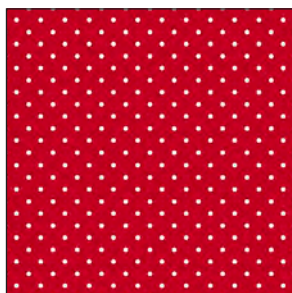
23691 O



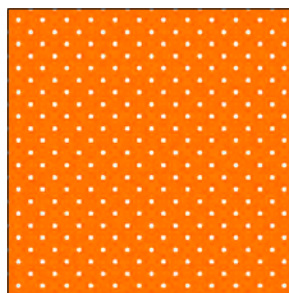
23691 SZ



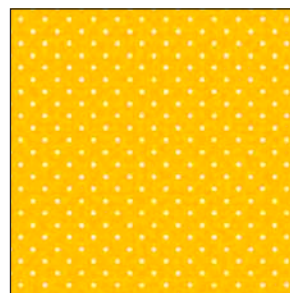
23691 G



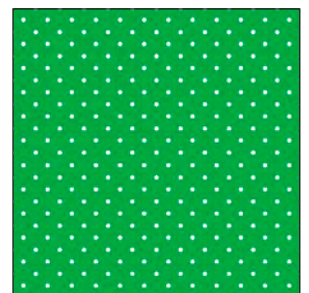
23692 R



23692 O



23692 SZ



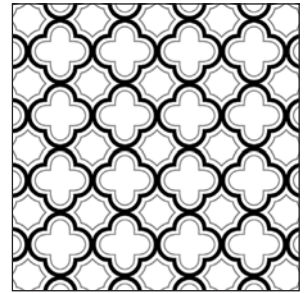
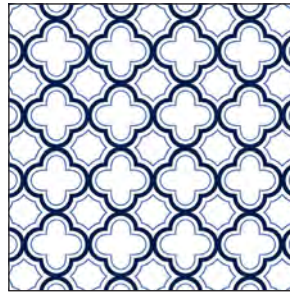
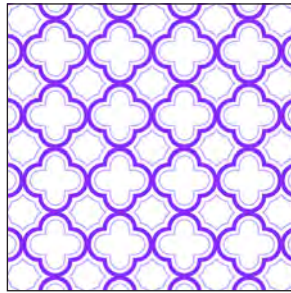
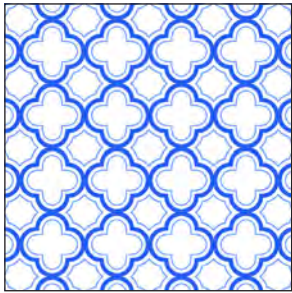
23692 G

Royal

Purple

Navy

Black

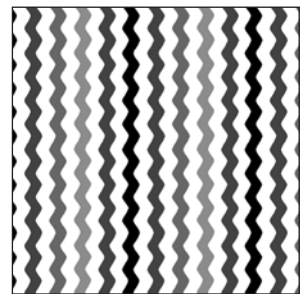
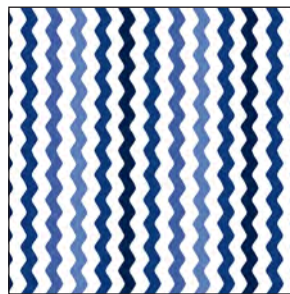
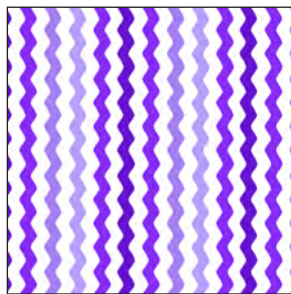


23688 Y

23688 V

23688 N

23688 J

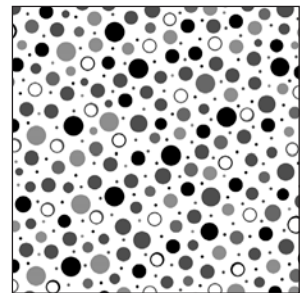
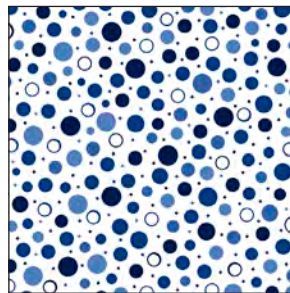
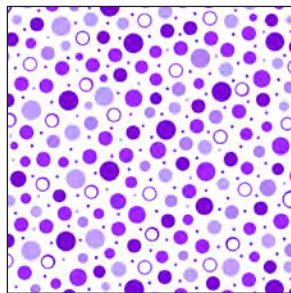
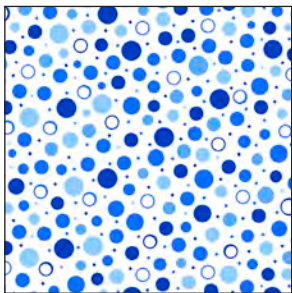


23689 Y

23689 V

23689 N

23689 J

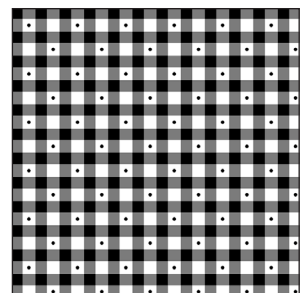
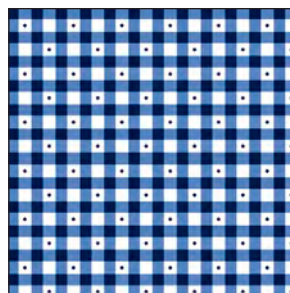
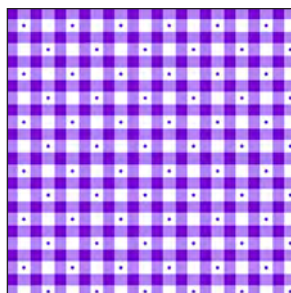
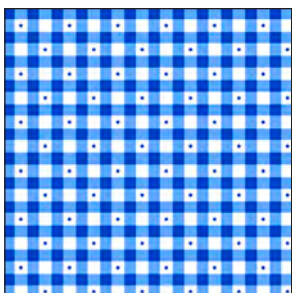


23690 Y

23690 V

23690 N

23690 J

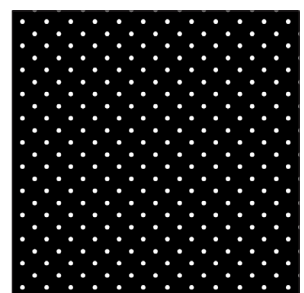
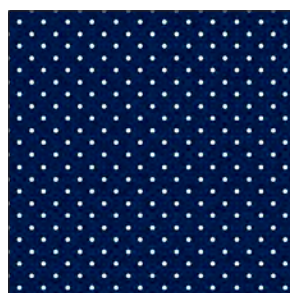
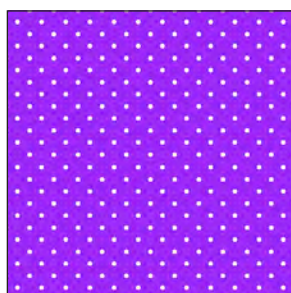
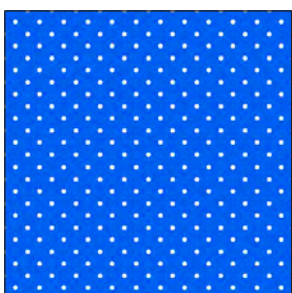


23691 Y

23691 V

23691 N

23691 J



23692 Y

23692 V

23692 N

23692 J

Artworks - Magical



44" x 52"

Ashtyn



69" x 93"

Bellisima



63" x 75"

Bethel



62" x 77"

Brooke



58" x 70"

Confetti Blossoms



61" x 73"

Be sure to visit quiltingtreasures.com for more project ideas

Critters at Play



50" x 76"

Dream Catcher



55" x 55"

Ellery



79" x 100"

Harrison Park



51" x 62 1/4"

Hatters Tea Party



34 1/2" x 54 1/2"

Hayden



64 1/2" x 75"

Be sure to visit quiltingtreasures.com for more project ideas

Home Sweet Home



52" x 56"

House on the Hill



45" x 50"

Love Grows Here



67" x 81"

Melodie



10 1/2" x 12" x 3"

Motorin'



53" x 69"

North Woods



52" x 67"

On the Road



44" x 46"

Patchwork Farms



61 1/2" x 79 1/2"

Say Cheese



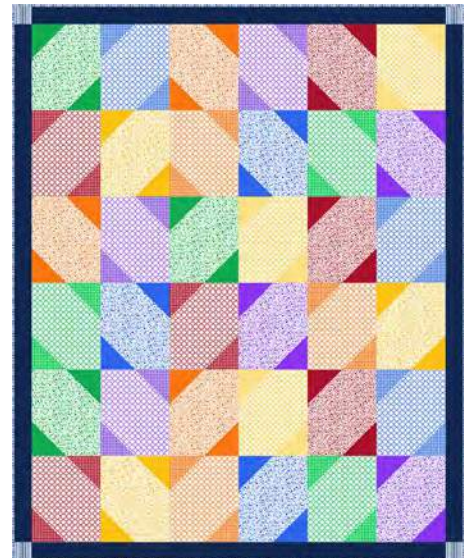
10 1/2" x 12" x 3"

Soiree



6 1/2" x 12" x 2"

Sorbet Essentials



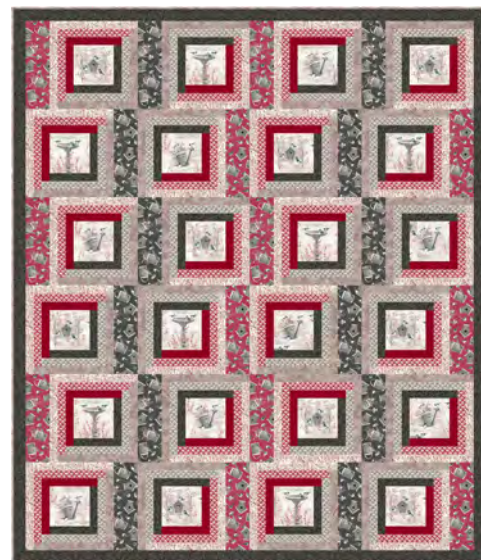
52 1/2" x 64 1/2"

So Saucy



50" x 50"

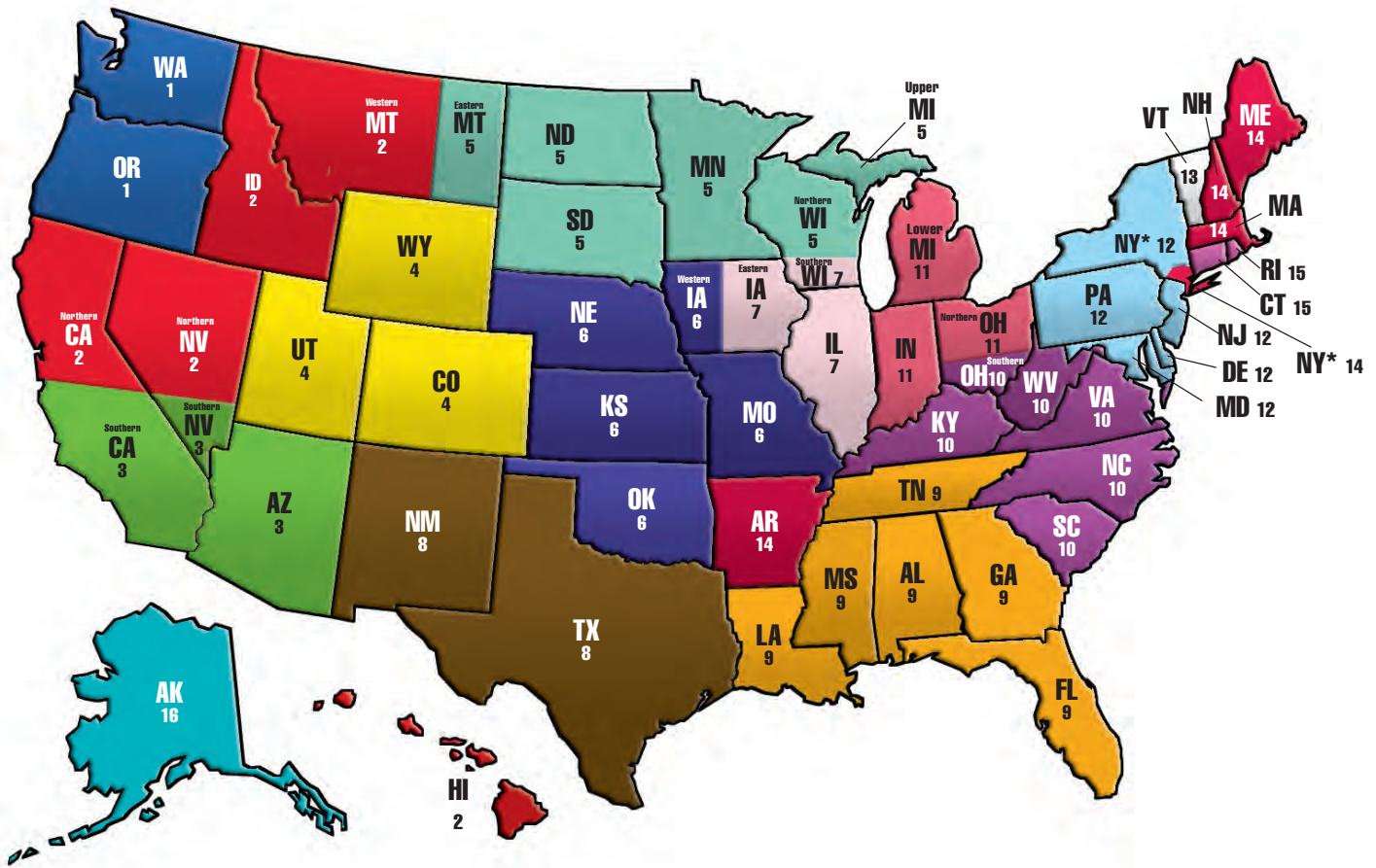
Winter Garden



59" x 69"

Be sure to visit quiltingtreasures.com for more project ideas

Regional Sales Managers



OR, WA

Regional Sales Manager
Martha Manning-Jurey
 Portland, OR
 Cell: 904.226.8020
 Fax: 800.540.7063
 Email: mjurey@cpw.com



Upper MI, MN, Eastern MT, ND, SD, Northern WI

Regional Sales Manager
Kay Peterson
 Owatonna, MN
 Cell: 507.475.2529
 Fax: 800.540.7063
 Email: kpeterson@cpw.com



AL, FL, GA, LA, MS, TN

Regional Sales Manager
Mike Flynn
 Atlanta, GA
 Cell: 205.478.7679
 Fax: 800.540.7063
 Email: mflynn@cpw.com



VT

Regional Sales Manager
Ken Gamache
 Cranston, RI
 Cell: 508.948.8119
 Fax: 800.540.7063
 Email: kgamache@cpw.com



Northern CA, HI, ID, Western MT, Northern NV

Regional Sales Manager
Ann Haley
 San Ramon, CA
 Cell: 925.785.8117
 Fax: 800.540.7063
 Email: ahaley@cpw.com



Western IA, KS, MO, OK, NE

Regional Sales Manager
Coby J. McComas
 Lee's Summit, MO
 Cell: 816.803.8195
 Fax: 800.540.7063
 Email: cmccomas@cpw.com



DC, KY, NC, Southern OH, SC, VA, WV

Regional Sales Manager
Larry Lippert
 Charlotte, NC
 Cell: 704.807.2330
 Fax: 800.540.7063
 Email: llippert@cpw.com



AR, MA, ME, NH, NY*

Sales Manager
Jesus Montero
 New York, NY
 Cell: 347.968.4427
 Fax: 800.540.7063
 Email: jmontero@cpw.com



*defined as south & east of Route 287

AZ, Southern CA, Southern NV

Regional Sales Manager
Barbara Wing
 Hawthorne, CA
 Cell: 310.339.4515
 Fax: 800.540.7063
 Email: bwing@cpw.com



Eastern IA, IL, Southern WI

Regional Sales Manager
Sarah Maylath
 Plainfield, IL
 Cell: 815.715.9914
 Fax: 800.540.7063
 Email: smaylath@cpw.com




IN, Lower MI, Northern OH

Regional Sales Manager
Jayne Clark
 Danville, IN
 Cell: 317.509.1312
 Fax: 800.540.7063
 Email: jclark@cpw.com



CT, RI

Sales Manager
Anita Pedchenko
 Cranston, RI
 Phone: 401.275.9460
 Fax: 800.540.7063
 Email: apedchenko@cpw.com




CO, UT, WY

Regional Sales Manager
Debra Coffman
 Denver, CO
 Cell: 303.907.8624
 Fax: 800.540.7063
 Email: dcoffman@cpw.com



NM, TX

Regional Sales Manager
Tammie Randle
 Bedford, TX
 Cell: 817.946.2975
 Fax: 800.540.7063
 Email: trandle@cpw.com



DE, MD, NJ, NY*, PA

Regional Sales Manager
Kevin Driscoll
 Aberdeen, NJ
 Cell: 732.310.0145
 Fax: 800.540.7063
 Email: kdriscoll@cpw.com



* excluding south & east of Route 287

AK

Independent Rep
Janai Comer
 Valdez, Alaska
 Cell: 907.831.1055
 Fax: 800.540.7063
 Email: seiscave@cvinternet.net



Canadian & International Distributors

If you are a potential wholesale customer and do not see your country or region listed, please contact our International Sales Manager.



EUROPE

International Sales Manager, Europe
Mode-Meter AG
PO Box 317
Baselstrasse 22 B
CH-4125
Riehen/Basel
Dieter Roesch
Marie Roesch
Tel: +41-61-643-0560
Mobile: +49-171-731-2958
Fax: +41-61-643-0561
Email: Mode-Meter@mode-meter.ch

AUSTRALIA

XLN Fabrics
2/21 Binney Rd.
Kings Park
NSW 2148
Australia
Tel: +61-2-9621-3066
Fax: +61-2-9622-3074
Email: allanmurphy@xln.com.au

BRAZIL

Fernando Maluhu CIA Ltda
Rua Cav. Basilio Jafet, 38
8.0 Andar Sala 804
Sao Paulo, SP Brazil 0122020
Mr. Fernando Maluhu
Tel: +5511-3325-2015
Fax: +5511-3325-2015
Email: bernardo@fernandomaluhu.com.br
Email: fernandomaluhu@fernandomaluhu.com.br

CANADA

International Textiles Ltd.
8811 Beckwith Rd.
Richmond, B.C.
Canada V6X 1V4
Tel: +604-270-7593
Fax: +604-270-7598
Email: intex.sales@shawbiz.ca

CHILE

Comercial Golf SpA
Independencia 369 local 13
Independencia 8380000
Santiago, Chile
Ester Benquis
Tel: +56-2-6966996
Email: ebenquis@gmail.com

COLOMBIA

Bodega Decorativa, DECORModa Textiles
Carrera 81 No. 32-330
Medellin, Antioquia
Colombia
Tel: +57-4-576-0570
Fax: +57-4-250-7617
www.decormoda.com.co
E-mail: decormoda@decormoda.com.co
Contact: Juan Daniel Orrego Pizano

Arte y Manualidades

Calle 6A #47-79
Cali, Colombia
America Rivas
Tel: +57-2-552-3957
Fax: +572-405-4966
Email: america362@yahoo.com

Telas y Tonos

Calle 125 No 21a-39
Bogota, Colombia
Raphael Ochoa
Tel: +57-1-215-1555
Email: administracion125@telasytonos.com

COSTA RICA

El Costurero
1314-2150 San Jose
Costa Rica
Maria Teresa Arteaga
Rocio Flaqué
Tel: +506-2225-9534
Fax: +506-2225-0526
Email: elcosturero@racsa.co.cr

CYPRUS

K. Didonion Textiles
16 Constantinou
Kava Fl Street P. code 30,76
Limassol, Cyprus
Tel: +357 25 331 739
Fax: + 357 25 387 476
Email: dingdong@cytanet.com.cy
Mr. Richard Didonion

CZECH REPUBLIC

Cotton Kingdom
Patchwork & Quilting Fabrics Wholesale
Svambovee 354
760 01 Zlin
Czech Republic
Tel: +420 603235078
Email: kos.libor@hotmail.com
Mr. Libor Kos
Siti Niti
Ochoz u Brna 624E
66402
Czech Republic
Email: info@sitiniti.cz
www.sitiniti.cz
Eva Maresova

ECUADOR

El Costurero
Dátiles y Primera Local 15
Centro Comercial Urdesa
Guayaquil, Ecuador
Sara De Gagliardo
Tel: +5934-238-9616
Fax: +5934-238-3985
Email: elcosturero@gye.satnet.net

FRANCE/BELGIUM

PASCAL et BEATRIX
48 rue Gustave Eiffel
ZA Albitech
81000 Albi
Mr Geoffrey Davi
Tel: +33-05-63-45-22-44
Mobile: +33-06-80-65-40-11
Fax: +33-05-63-54-29-66
Email: contact@pascaletbeatrice.com

GERMANY & AUSTRIA

Zweigart & Sawitzki
Fronackerstrasse 50
D-71063 Sindelfingen
Germany
Mrs. Klotz
Mr. Michael Georgii
Mr. Florent Baudouin
Tel: +49-70-31-795414
Fax: +49-70-31-795476
Email: fbaudouin@zweigart.de

GUATEMALA

Casa Decora & CIA Ltda
Primera calle 18-83
Zona 15
Local 23 Vista Hermosa II
Guatemala, Guatemala
Miriam De Palacios
Tel: +502-2369-6477

ITALY

HFT SRL
Viale Piave 60
24022 Alzano Lombardo (BG)
Italy
Tamara Morzenti
Tel: +39 035 512 450
Fax: +39 035 515 466
Web: www.hft.it

JAPAN

Kiyohara & Co., Ltd.
5-2 Minamikyuhoji
4-Chome, Chuo-Ku
Osaka, Japan
Kaz Fujii
Tel: +8166-252-4764
Fax: +8166-252-4377
Email: kazu.fujii@kiyohara.co.jp

Lecien Corporation
7F Yotsubashi Grand Square,
1-28-3 Shinmachi,
Nishi-ku Osaka 550-0013
Mr. Fuminori Ito
Tel: +06-4390-5526
Fax: +06-4390-5516

MEXICO

Grupo Parisina
Venustiano Carranza No. 77
Col. Centro
Mexico City, Mexico 06060
Juan Jose Sierra Requejo
Tel: +525-55512-2353
Fax: +525-55521-2145

NETHERLANDS

Rinske Stevens Design B.V.
Costerweg 4C
4104 AJ CULEMBORG
Netherlands
Tel: +31-345788-999
Fax: +31-847360-013
Email: info@rinskestevensdesign.com

NEW ZEALAND

Tiffanies Treasures
PO Box 300-194
Albany, Auckland
New Zealand
Mr. Pawan Kalsi
Tel: +64-9-477-0155
Fax: +64-9-476-7240
Email: info@tiffaniestreasures.co.nz

PUERTO RICO

Cabrera Marketing Co.
#95 Calle La Cambija Ste. 7
Bayamon, P.R. 00961
Tel: +787-787-7890 or 778-7875
Fax: +787-269-6982
Noel Cabrera
Email: cabreramarkpr@gmail.com

J. Pica & Co, Inc(Tiendas Capri)

Calle A. Esq. Escorial
Urb. Industrial Mario Julia
Puerto Nuevo, PR 00920
Jose Acosta
Tel: +787-793-7575
Fax: +787-793-0668
Email: jacosta@jpica.com

RUSSIA

Gela LTD
141400, Vladenije 13B
Vashutinskoje shosse
Chimki, Moscow area
Russia
Anton Shcherbakov
Tel: +74 95 742 50 43
Fax: +74 95 742 80 70
Web: www.gela.ru
Email: anton@gela.ru

SAUDI ARABIA

Al Zamil Stores
PO Box 217
Al Khobar 31952, Saudi Arabia
Tel: + 966 3 864 1919
Fax: + 966 3 864 9190
Email: Zamix@sahara.com.sa
Mr. Azuver Saleem

SCANDINAVIA

Adlico Textile Aps.
Merkurvej 2
7430 Ikast
Denmark
Mr. Thomas Eriksen
Tel: + 45 978 625 25
Fax: + 45 978 625 24
Mobile: + 45 299 261 08
Handy: + 49 151 616 048 71
Email: jon@adlico.dk
Web: http://www.adlico.dk

SINGAPORE

Sing Mui Heng (PTE) Ltd
315 Outram Road #05-09 Tan Boon Liat
Building
Singapore 169074
Tel: +65-6221-9209
Fax: +65-6223-4884
Sim Piah Hui
Email: mgt@singmuiheng.com

SLOVAKIA

Daša Kozmérová - Bubulákovo
Lužná 2320/6
Šal'a 927 05
www.bubulakovo.sk
www.bubulakovo.cz
www.bubulakovo.hu

SPAIN/PORTUGAL

ALBA Patchwork S.L.
C. Orient, 12
E-43204 Reus
Tarragona, Spain
Sra. Victoria Alba
Tel: +34-977-77-20-21
Fax: +34-977-77-20-21
Email: albapatch@albapatch.com

SWITZERLAND

Mode-Meter AG
PO Box 317
Baselstrasse 22 B
CH-4125
Riehen/Basel
Dieter Roesch
Tel: +41-61-643-0560
Mobile: +49-171-731-2958
Fax: +41-61-643-0561
Email: Mode-Meter@mode-meter.ch



Cotton & Color
Inzlingerstrasse 279
CH4125 Riehen
Astrid Oberhauser
Tel: +41-61-641-9770
Email: info@cotton&color.com

J. GASSER & CO. AG
Industriestrasse 4
CH - 4658 Däniken
Toni Peier
Tel: +41 62 288 90 82
Fax: +41 62 288 90 85
Web: http://www.gasser-daeniken.ch

TAIWAN

Taiwan Cheer Champ Co., Ltd
11th Fl., Universal Center No. 175, Sec.
1 Tatung Rd.,
Hsi Chih, New Taipei City 221, Taiwan-
(R.O.C)
Joyce Yen
Tel: +886-2-26498555#372
Fax: +886-2-26498897
Email: joyce@cces.com.tw

Wood & Cloth

93 Nantien St.
Kaoshiung City, Taiwan
R.O.C.
Elaine Liu
Tel: +886-7-3303718
Fax: +886-7-5317916
Email: woodandcloth@gmail.com

UNITED KINGDOM & IRELAND

Behrens Fabrics
Centrepoint
Marshall Stevens Way
Trafford Park
Manchester
M17 1PP
Mr. Duncan Hough
Tel: +44-161-872-1444
Fax: +44-161-872-8002
Mobile: 07808 786 060
Email: dhough@behrens.co.uk

VENEZUELA

Importadora Cristelia
Av. Cuyuni Ota. Alegria
Colina De Bello Monte
Caracas, Venezuela
Jose Gomez & Ofelia Gomez
Tel: +58212-753-1585
Fax: +58212-753-7130
Email: berdun@hotmail.com



800.876.2756 | quiltingtreasures.com | an employee-owned company