



Katia
www.katia.com

2019

PRIMAVERA - VERANO
PRINTEMPS - ÉTÉ
SPRING - SUMMER
FRÜHJAHR - SOMMER
LENTE - ZOMER
PRIMAVERA - ESTATE



2019

PRIMAVERA - VERANO
PRINTEMPS - ÉTÉ
SPRING - SUMMER
FRÜHJAHR - SOMMER
LENTE - ZOMER
PRIMAVERA - ESTATE



N.88
BEBÉ · LAYETTE
BABY · BEBÈ



N.89
NIÑO · ENFANT ·
CHILDREN · KINDER ·
KINDEREN · BAMBINI



N.100
CASUAL



N.7
CONCEPT





Katifa

N.88

BEBÉ
LAYETTE
BABY
BEBÈ



L-35 PANAMA 10-75
MISSISSIPPI-3
CAPRI 82170-82083

90 gr.

2019

PRIMAVERA - VERANO
PRINTEMPS - ÉTÉ
SPRING - SUMMER
FRÜHJAHR - SOMMER
LENTE - ZOMER
PRIMAVERA - ESTATE



L-16 CABLÉ-5 6-18 145 gr.
 L-17 CABLÉ-5 6-18 100 gr.
 L-18 CABLÉ-5 6-18 115 gr.



L-19 MONACO BABY 13 85 gr.
 L-20 MONACO BABY 36 95 gr.
 L-31 CANDY 671 75 gr.



L-44 COTTON-CASHMERE 68
 L-45 COTTON-CASHMERE 68
 L-46 BUTTERFLY 82

95 gr.
 100 gr.
 120 gr.



L-44 COTTON-CASHMERE 68

95 gr.



L-50 COTTON-CASHMERE 61-66

360 gr.



L-49 CAPRI 82148-82050-82152

80 gr.

MISSISSIPPI-3
PANAMA 64-51-1

L-47 BIG RIBBON 1-12-43 + BIG ALABAMA 2 1.380 gr.

L-48 BIG RIBBON 1-43 1.465 gr.



L-11 PEQUES 84903 175 gr.
MERINO BABY 7



L-12 PEQUES 84903-84918-84904 90 gr.
MERINO BABY 7-55-73



L-07 PEQUES 84903-84918 60 gr.
MERINO BABY 7-55
L-08 PEQUES 84903-84918 20 gr.
MERINO BABY 7-55
L-09 PEQUES 84904-84918 60 gr.
MERINO BABY 73-55
L-10 PEQUES 84904-84918 20 gr.
MERINO BABY 73-55



L-26 COTTON STRETCH 3 + HAWAII 116 85 gr.



L-26 COTTON STRETCH 3 + HAWAII 116 85 gr.
 L-27 COTTON STRETCH 3 + HAWAII 116 95 gr.
 L-28 COTTON STRETCH 3 + HAWAII 116 115 gr.
 L-29 HAWAII 116 110 gr.



L-13 COTTON-YAK 106-116
 L-14 COTTON-YAK 106-116
 L-15 COTTON-YAK 106-116

125 gr.
 95 gr.
 85 gr.



L-15 COTTON-YAK 106-116

85 gr.



L-21 PANAMA 57-1-63 110 gr.
 MISSISSIPPI-3
 CAPRI 82155-82050-82144



L-21 PANAMA 57-1-63 110 gr.
 MISSISSIPPI-3
 CAPRI 82155-82050-82144
 L-22 PANAMA 57-1-63 60 gr.
 MISSISSIPPI-3
 CAPRI 82155-82050-82144
 L-23 PANAMA 57 50 gr.
 MISSISSIPPI-3 408
 CAPRI 82155



- L-24 PANAMA 57 100 gr.
MISSISSIPPI 3 408
- L-33 CANDY 673 80 gr.
- L-25 PANAMA 57-1-63 110 gr.
MISSISSIPPI 3
CAPRI 82155-82050-82144



L-33 CANDY 673 80 gr.

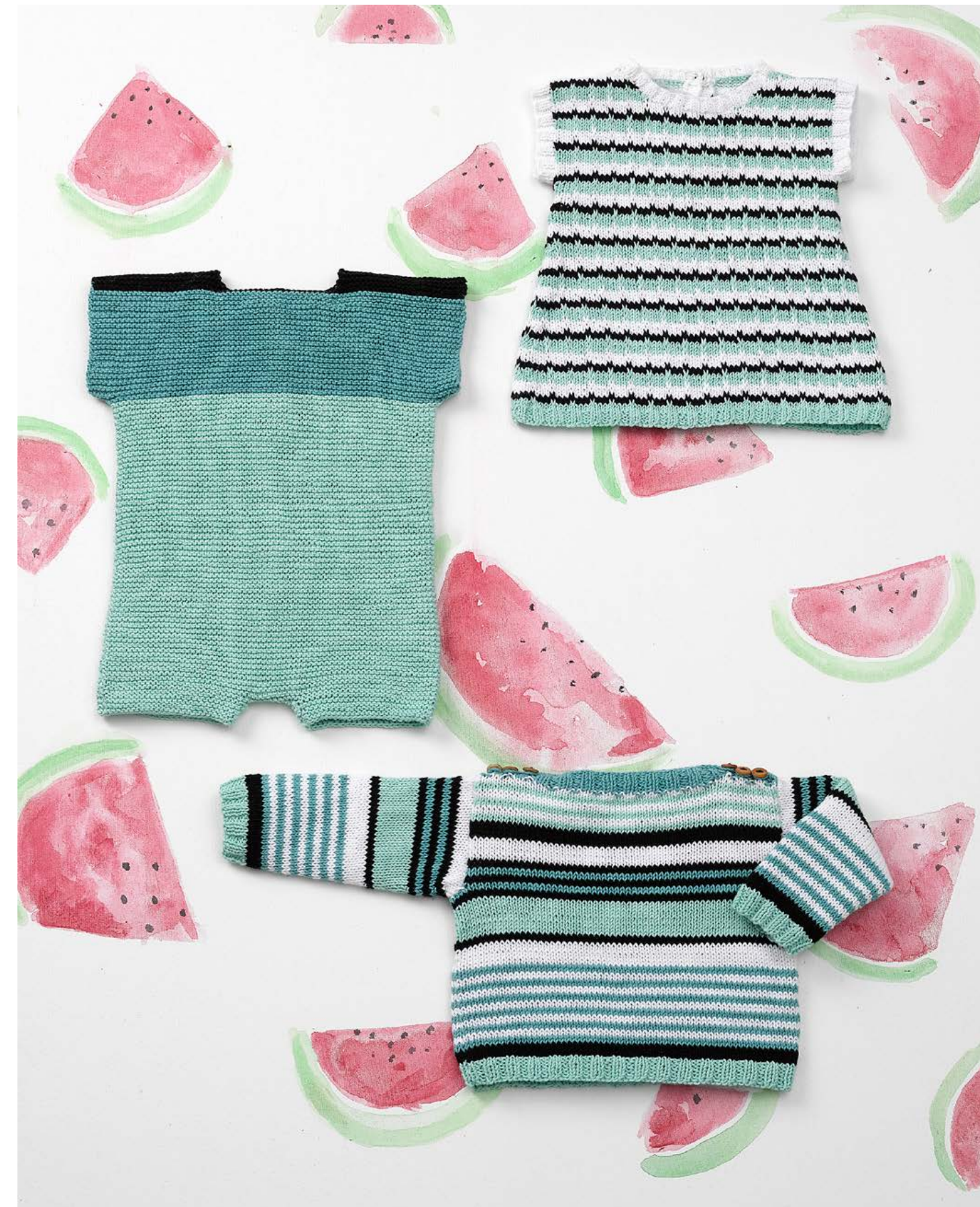


- L-52A PANAMA 1-63 15 gr.
MISSISSIPPI-3 / CAPRI 82050-82144
- L-52B PANAMA 1-57 15 gr.
MISSISSIPPI-3 301-408 /
CAPRI 82050-82155



L-01 FAIR COTTON 1-2-16-29

95 gr.



L-03 FAIR COTTON 1-2-29

90 gr.

L-02 FAIR COTTON 2-16-29

125 gr.

L-01 FAIR COTTON 1-2-16-29

95 gr.

Contraportada/Quatrième de couverture/Back Cover/
Rückseite/Achterpagina/Quarta di copertina



L-04 FAIR COTTON 1-2-16-29 100 gr.
 L-06 FAIR COTTON 16-29 125 gr.
 L-05 FAIR COTTON 1-2-29 120 gr.



L-05 FAIR COTTON 1-2-29 120 gr.



- L-34 PANAMA 10-75 145 gr.
MISSISSIPPI-3
- L-36 CANDY 674 100 gr.
- L-32 CANDY 674 110 gr.
- L-35 PANAMA 10-75 90 gr.
MISSISSIPPI-3
CAPRI 82170-82083



- L-35 PANAMA 10-75 90 gr.
MISSISSIPPI-3
CAPRI 82170-82083



L-38 COTTON-ALPACA 80-98
 L-42 PANAMA 3-75
 MISSISSIPPI-3 312-819
 CAPRI
 100 gr.
 75 gr.



L-38 COTTON-ALPACA 80-98
 L-37 COTTON-ALPACA 80-97
 L-39 COTTON-ALPACA 80-96
 100 gr.
 80 gr.
 80 gr.



- L-40 PANAMA 3-72 110 gr.
MISSISSIPPI-3 312-821 /
CAPRI 82145-82150
- L-41 COTTON 100% 3-57 120 gr.
- L-42 PANAMA 3-75 75 gr.
MISSISSIPPI-3 312-819 / CAPRI
- L-43 PANAMA 3-74 35 gr.
MISSISSIPPI-3 / CAPRI
- L-43B PANAMA 3-72 35 gr.
MISSISSIPPI-3 312-821 /
CAPRI 82145-82150



- L-01 FAIR COTTON 1-2-16-29 95 gr.
Contraportada/Quatrième de couverture/Back Cover/
Rückseite/Achterpagina/Quarta di copertina



Katitai

N.89

NIÑO
ENFANT
CHILDREN
KINDER
KINDEREN
BAMBINI



E-30

MENFIS COLOR 105 /
COTTON 100% 5 - 57

245 gr.

E-27

DUOMO 85 + HAWAII 117

240 gr.

2019

PRIMAVERA - VERANO
PRINTEMPS - ÉTÉ
SPRING - SUMMER
FRÜHJAHR - SOMMER
LENTE - ZOMER
PRIMAVERA - ESTATE



E-31 MENFIS COLOR 101 220 gr.



E-32 TENCEL-COTTON 19 - 24 215 gr.
E-09 MONTECARLO 70 - 75 185 gr.



E-19 BUTTERFLY 86 + MALIBU PLUS 105
E-07 MONTECARLO 74

160 gr.
120 gr.



E-13 HAWAII 118

120 gr.



E-22	BUTTERFLY 87	110 gr.
E-11	BORA BORA 58 - 108	250 gr.
E-37	PANAMA 73 / CAPRI 82129 / MISSISSIPPI-3 809	110 gr.



E-35 COTTON STRETCH 15 190 gr.



E-34 FAIR COTTON 4 - 33 240 gr.
E-33 FAIR COTTON 4 - 32 - 33 145 gr.



E-02 CAPRI PLUS 103 220 gr.



E-03 CAPRI PLUS 107 290 gr.
E-24 COTTON-YAK 121 235 gr.



E-16 HAWAII 119 90 gr.



E-20 COTTON 100% 1-57-58-59 250 gr.



E-16 HAWAII 119 90 gr.
 E-21 ALABAMA 1 - 64 325 gr.
 E-20 COTTON 100% 1-57-58-59 250 gr.



E-26 DUOMO 82 - 91 400 gr.



E-01 MONTECARLO 71 + MISSOURI 1 - 2 200 gr.
E-28 MISSOURI 1 - 2 - 45 230 gr.



E-30	MENFIS COLOR 105 / COTTON 100% 5 - 57	245 gr.
E-27	DUOMO 85 + HAWAII 117	240 gr.
<small>Portada/Page de couverture/Cover Page/ Titelblatt/Voorpagina/Copertina</small>		
E-36	COTTON 100% 3 - 48	225 gr.



E-04	DEGRADÉ "SUN" 207	225 gr.
E-38	TENCEL-COTTON 3 - 10 - 15	250 gr.
E-29	PANAMA 3 - 75 / CAPRI / MISSISSIPPI-3	155 gr.



E-39	WASHI 129 + GATSBY 49	150 gr.
E-40	WASHI 127	70 gr.



E-12 BORA BORA 57 – 107
E-23 MENFIS COLOR 107

245 gr.
315 gr.



E-10 DEGRADÉ "SUN" 201

130 gr.



E-14 CALIOPE 67 175 gr.
E-15 BAHAMAS 64 150 gr.



E-15 BAHAMAS 64 150 gr.



E-25 BAHAMAS 65 180 gr.



N.89 NIÑO · ENFANT · CHILDREN · KINDER · KINDEREN · BAMBINI



E-05 FAIR COTTON CRAFT 500

185 gr.

Póster / Poster



N.89 NIÑO · ENFANT · CHILDREN · KINDER · KINDEREN · BAMBINI



E-08

FAIR COTTON CRAFT 503

Promoted garment

195 gr.



E-17 BIG ALABAMA 36 310 gr.
E-06 DEGRADÉ "SUN" 200 275 gr.



E-18 BUTTERFLY 85 + MALIBU PLUS 104 140 gr.
Contraportada/Quatrième de couverture/Back Cover/
Rückseite/Achterpagina/Quarta di copertina



Katifa

N.100

CASUAL

MUJER-HOMBRE
FEMME-HOMME
WOMAN-MAN
DAMEN-HERREN
DAMES-HEREN
DONNA-UOMO



S-14

COTTON 100% 59

250 gr.

2019

PRIMAVERA - VERANO
PRINTEMPS - ÉTÉ
SPRING - SUMMER
FRÜHJAHR - SOMMER
LENTE - ZOMER
PRIMAVERA - ESTATE



S-56 LINEN 25 – 18 485 gr.
S-09 DEGRADÉ "SUN" 203 260 gr.



S-204 COTTON 100% 30 300 gr.



S-410 BUTTERFLY 83 + MISSOURI 38-37-44-3 500 gr.



S-803 MISSOURI 6 - 44 450 gr.
S-55 MISSOURI 44 185 gr.



S-57 COTTON 100% 12 665 gr.
S-07 BORA BORA 55 - 105 370 gr.



S-404 BORA BORA 106 - 56 450 gr.



S-58 MALIBU PLUS 55 390 gr.



S-409 PANAMA 63 / CAPRI 82144 / MISSISSIPPI-3 470 gr.
S-806 MENFIS COLOR 104 + PANAMA 63 325 gr.
CAPRI 82144
MISSISSIPPI-3



S-401 DEGRADÉ "SUN" 205 260 gr.
 S-802 ALABAMA 64 - 9 - 53 330 gr.



S-14 COTTON 100% 59



250 gr.



S-805 BUTTERFLY 86 + COTTON 100% 1 285 gr.



S-405 MONACO BABY 37 330 gr.



S-27 BUTTERFLY 81 245 gr.



S-205 PANAMA 25 / CAPRI 82105 / MISSISSIPPI-3 789 210 gr.



S-53 PANAMA 1 - 2 - 71 330 gr.
CAPRI 82050 - 82056 - 82118
MISSISSIPPI-3 301 - 328 - 793



S-54 TENCEL-COTTON 1 - 2 - 12 440 gr.



S-406 ALABAMA 13

215 gr.



S-61 BUTTERFLY 84 + COTTON 100% 5

225 gr.



S-52 DEGRADÉ "SUN" 204 300 gr.



S-208 MENFIS COLOR 103 350 gr.



S-206 TENCEL-COTTON 16 325 gr.



S-62 MENFIS COLOR 100 550 gr.



S-28 ALABAMA 34 315 gr.



S-202 LUNIS 86 285 gr.



S-407 MALIBU PLUS 101 330 gr.



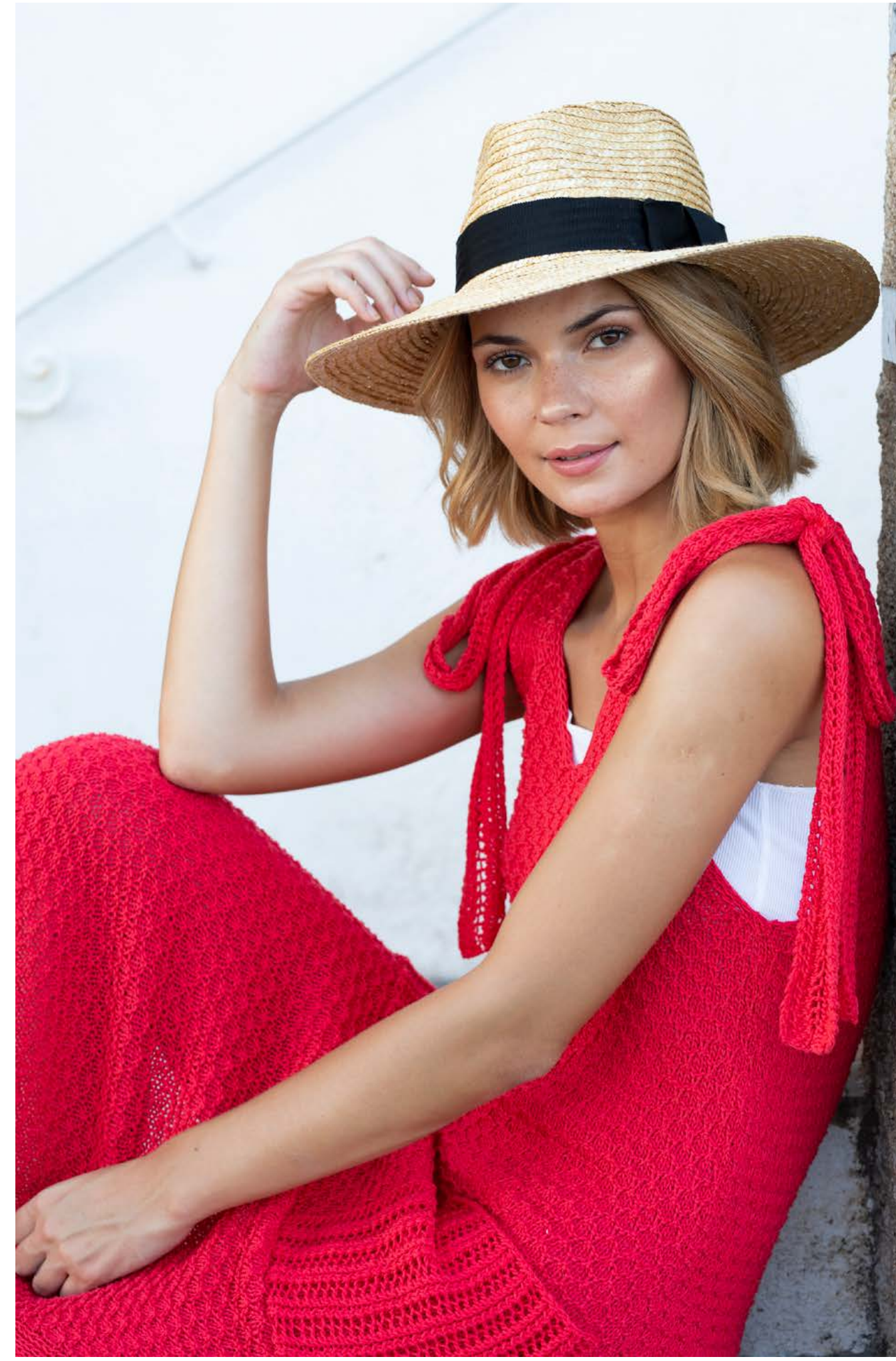
S-400 MISSOURI 21 - 3 290 gr.



N.100 MUJER-HOMBRE · FEMME-HOMME · WOMAN-MAN · DAMEN-HERREN · DAMES-HEREN · DONNA-UOMO



S-50 TENCEL-COTTON 4



600 gr.

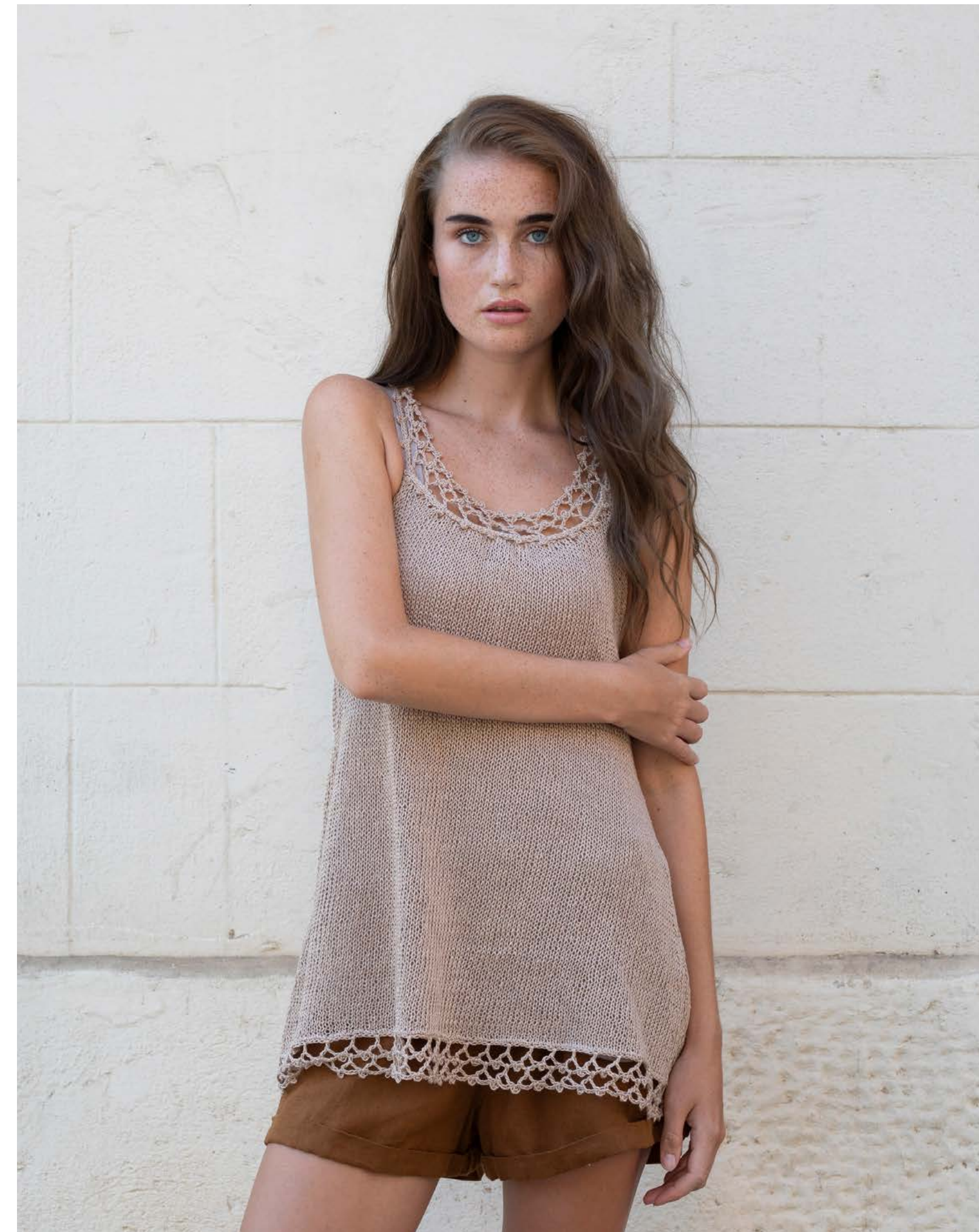
Contraportada/Quatrième de couverture/Back Cover/
Rückseite/Achterpagina/Quarta di copertina



N.100 MUJER-HOMBRE · FEMME-HOMME · WOMAN-MAN · DAMEN-HERREN · DAMES-HEREN · DONNA-UOMO



S-12 LINEN 7 385 gr.



S-203 LINO 100% 9 190 gr.



S-207 MALIBU PLUS 54 265 gr.



S-13 HAWAII 119 + PANAMA 76 285 gr.
CAPRI 82171
MISSISSIPPI-3 822



S-804 MALIBU PLUS 105 + TENCEL-COTTON 24 340 gr.



S-51 MONTECARLO 74 - 75 - 73 250 gr.



S-801 BRISA 64 285 gr.



S-60 GATSBY 54 300 gr.



S-101 BRISA 62 500 gr.



S-08 LUNIS 62 220 gr.



S-200 GATSBY 41 240 gr.



S-100 GATSBY 43 375 gr.



N.100 MUJER-HOMBRE · FEMME-HOMME · WOMAN-MAN · DAMEN-HERREN · DAMES-HEREN · DONNA-UOMO



S-201 IBIS 76 280 gr.



S-64 IBIS 89 230 gr.



S-65 LOVE DENIM 101
+BIG ALABAMA 6 400 gr.



S-66 MISSOURI 22-25-38-11



S-67 MISSOURI 39



S-68 MISSOURI 1-30-11-41



S-71 MISSOURI 1 - 30 - 11



S-69 TENCEL-COTTON 7



S-70 TENCEL-COTTON 7



N.100

MUJER-HOMBRE · FEMME-HOMME · WOMAN-MAN · DAMEN-HERREN · DAMES-HEREN · DONNA-UOMO



S-402
S-10

MENFIS COLOR 106
TENCEL-COTTON 23

280 gr.
565 gr.



S-59 FAIR COTTON 23 – 34 350 gr.



S-63 FAIR COTTON CRAFT 501 325 gr.



N.100 MUJER-HOMBRE · FEMME-HOMME · WOMAN-MAN · DAMEN-HERREN · DAMES-HEREN · DONNA-UOMO



S-403 FAIR COTTON 33 130 gr.



S-408 FAIR COTTON 34 255 gr.



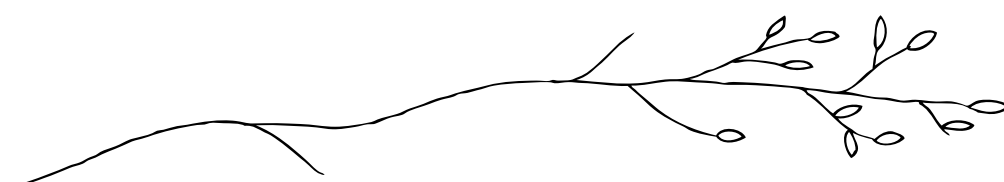
Katifa

N.7

CONCEPT

BY

Katifa



CPT-50 DUOMO 80-94-83

415 gr.

2019

PRIMAVERA - VERANO
PRINTEMPS - ÉTÉ
SPRING - SUMMER
FRÜHJAHR - SOMMER
LENTE - ZOMER
PRIMAVERA - ESTATE

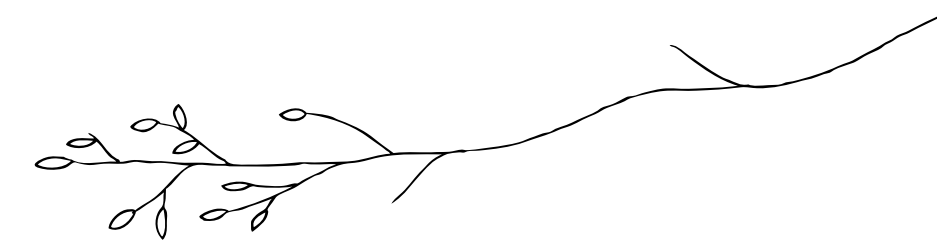
Katja

N.7

CONCEPT

BY

Katja



CPT-04 COTTON-YAK 122

265 gr.

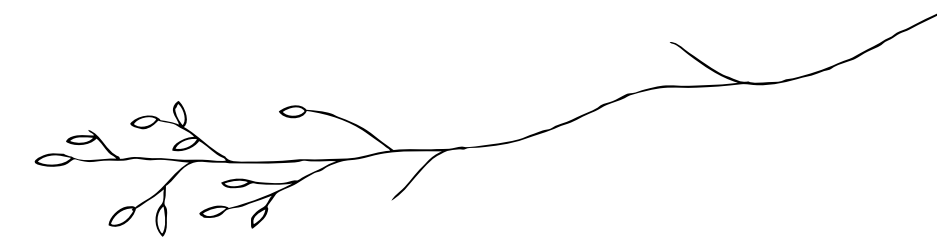
Katja

N.7

CONCEPT

BY

Katja



CPT-05 COTTON-ALPACA 82-94

360 gr.



CPT-206 COTTON-YAK 100

235 gr.

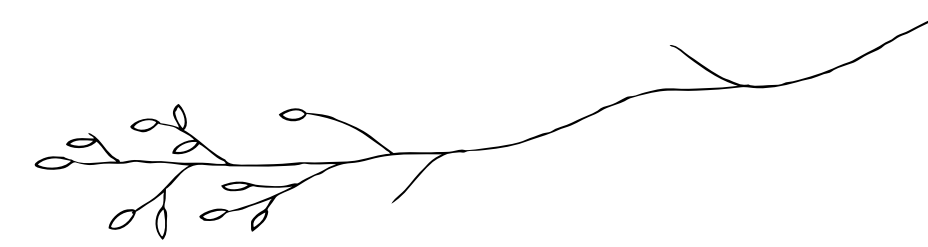
Katja

N.7

CONCEPT

BY

Katja



CPT-06 CALIOPE 64

400 gr.

Póster / Poster

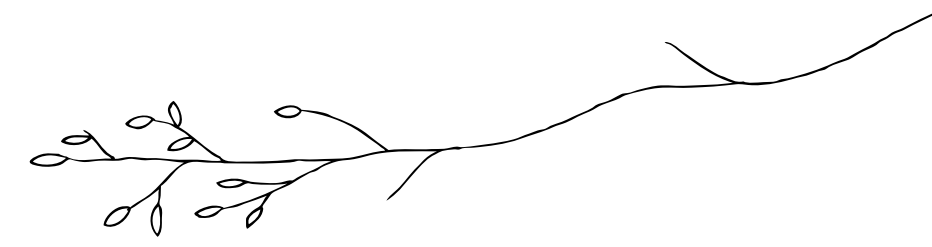
Katja

N.7

CONCEPT

BY

Katja



CPT-57 COTTON-CASHMERE 65

230 gr.



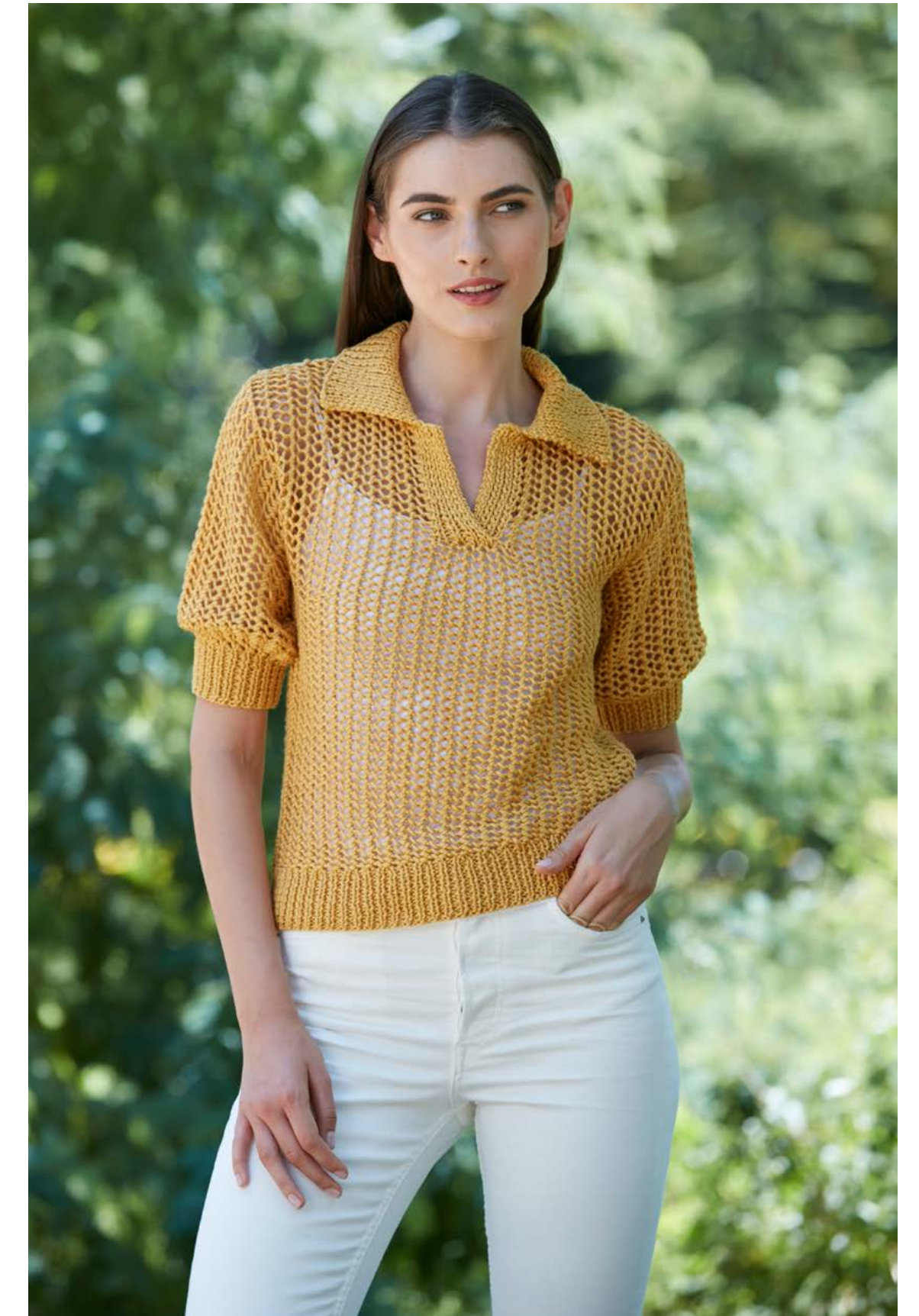
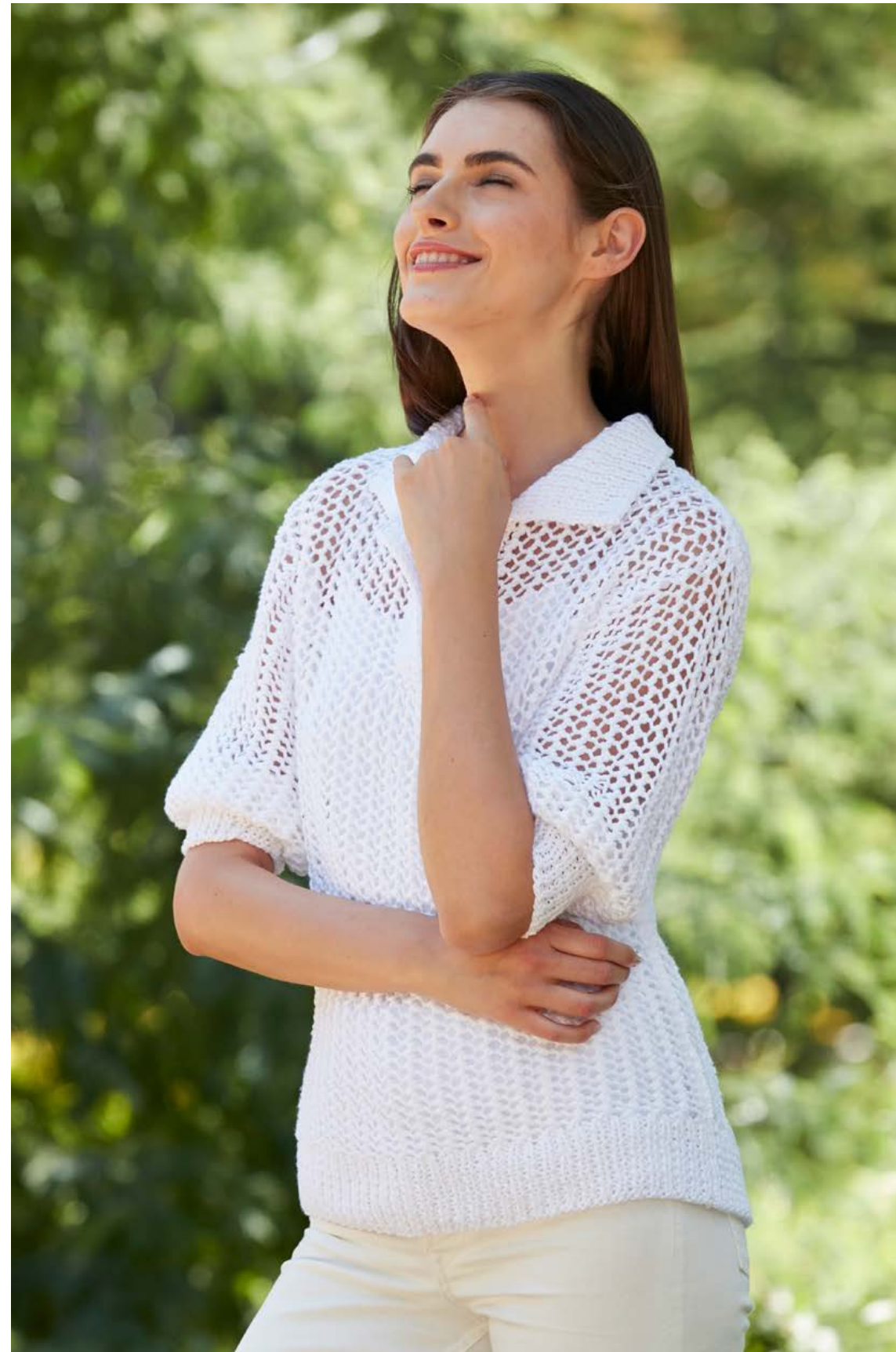
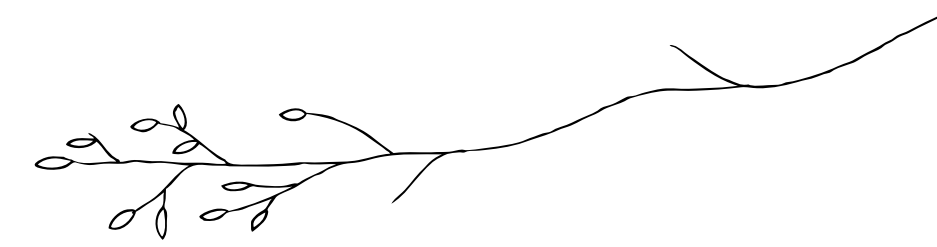
CPT-56 CALIOPE 60

360 gr.

Katja

N.7

CONCEPT BY **Katja**



CPT-55A DUOMO 80 335 gr.

CPT-55B DUOMO 93 335 gr.

CPT-55C DUOMO 92 335 gr.

CPT-55D DUOMO 88 335 gr.

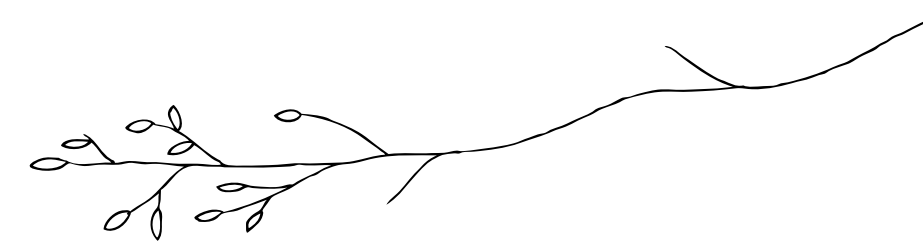
Katja

N.7

CONCEPT

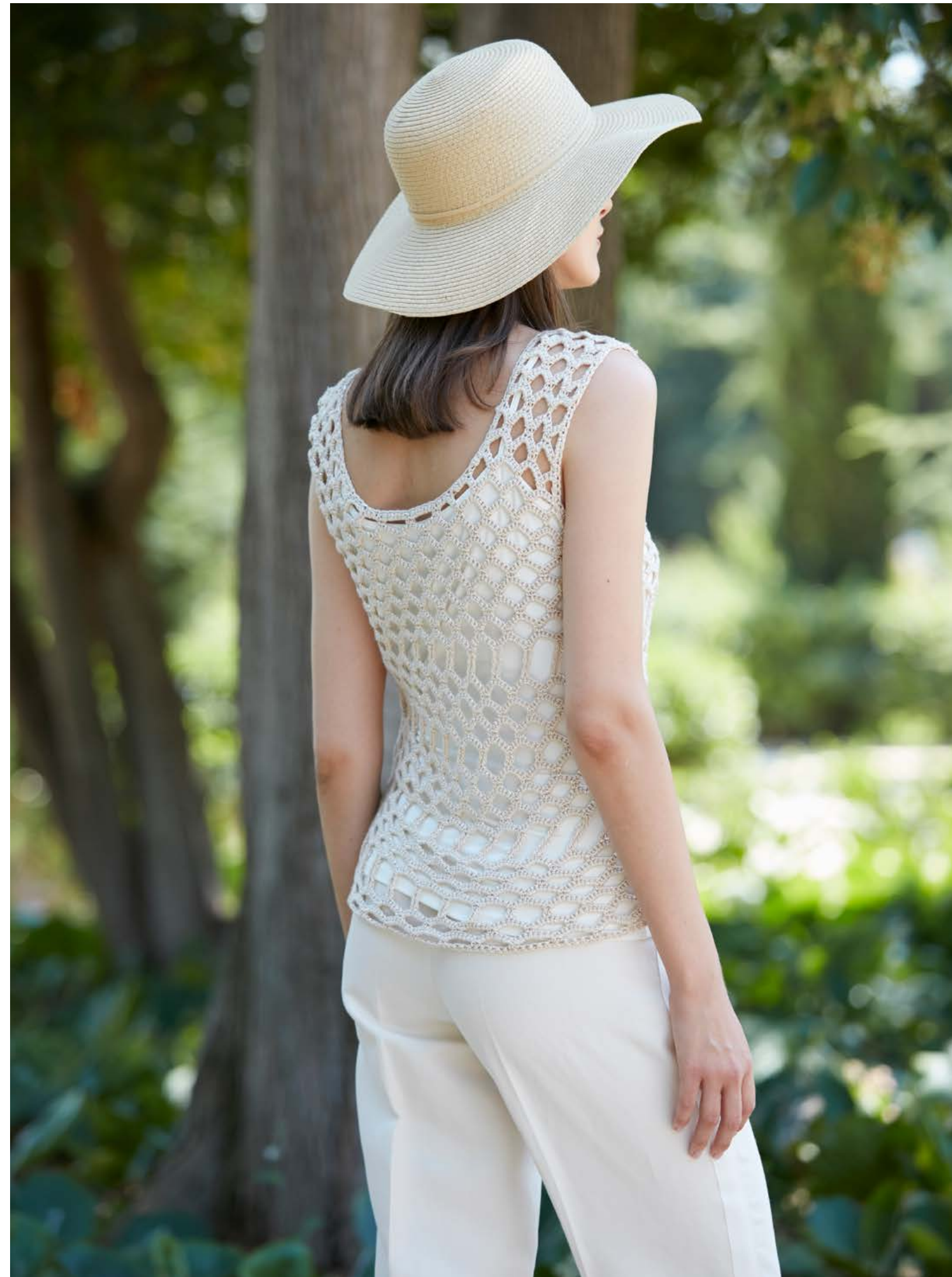
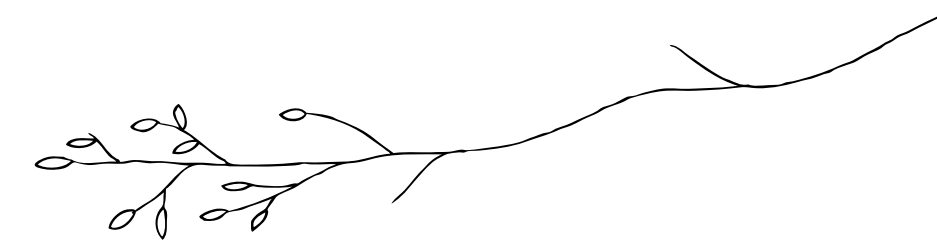
BY

Katja



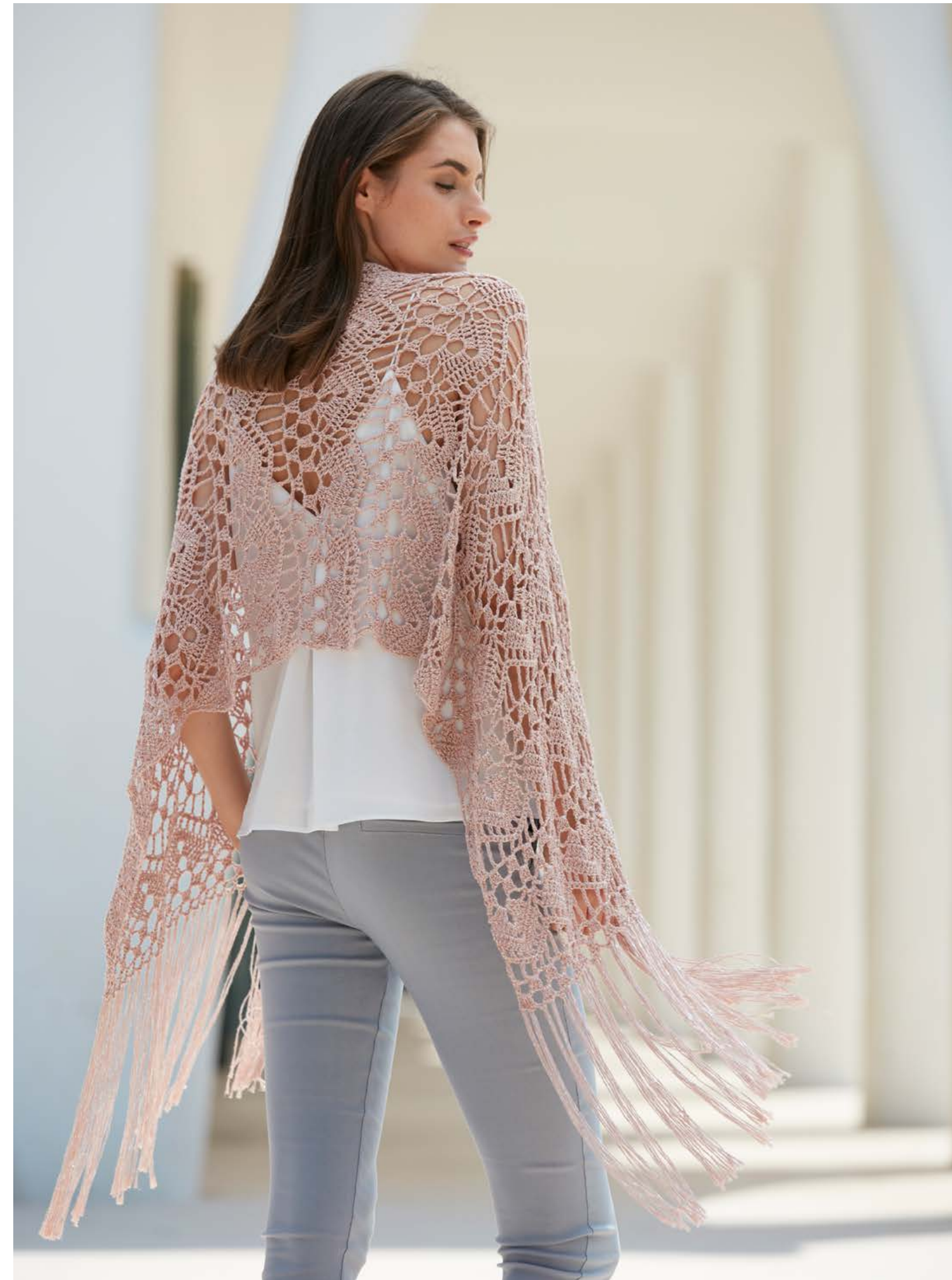
CPT-400 DUOMO 90

415 gr.



CPT-204 VERSAILLES 82

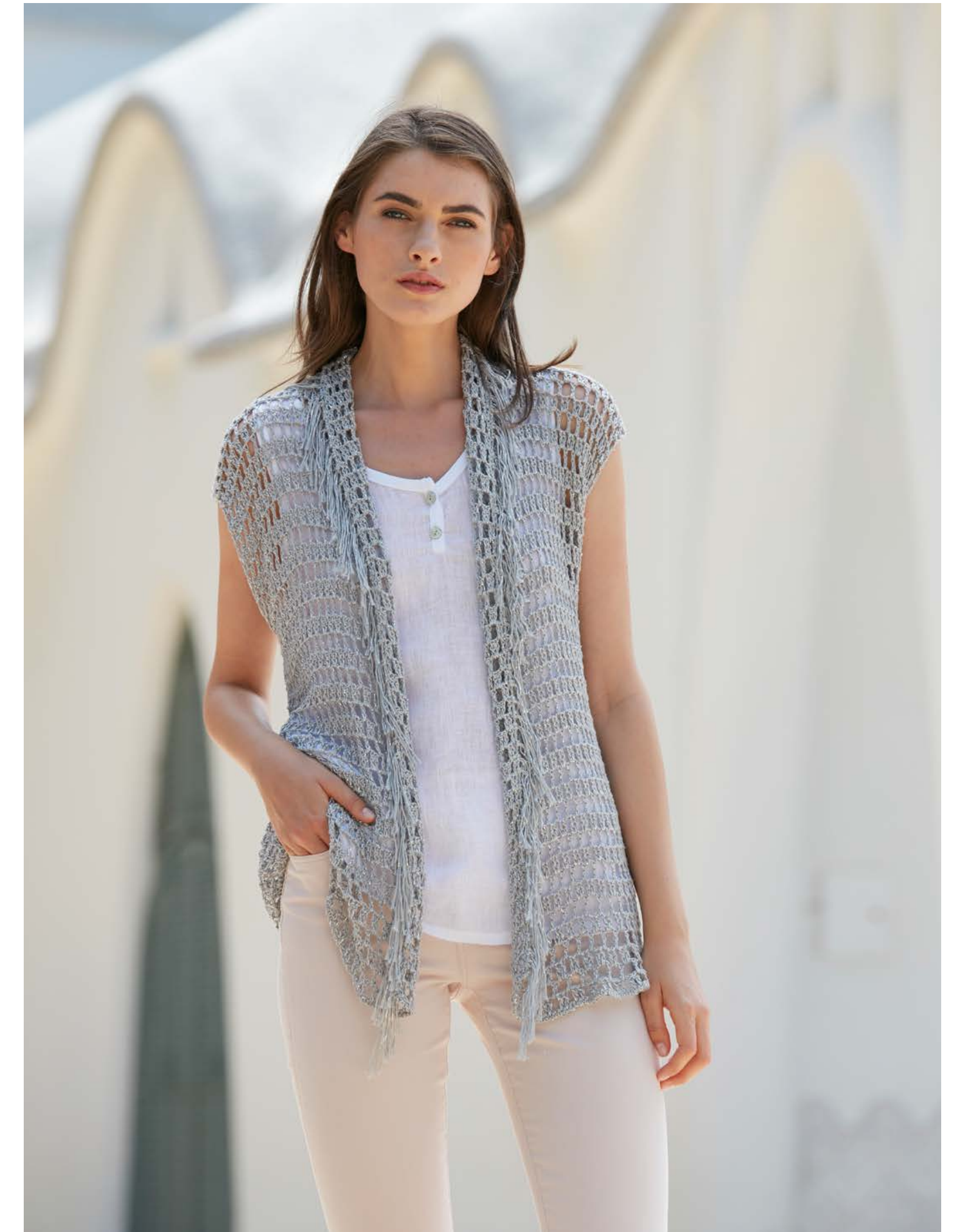
230 gr.



CPT-60 VERSAILLES 85

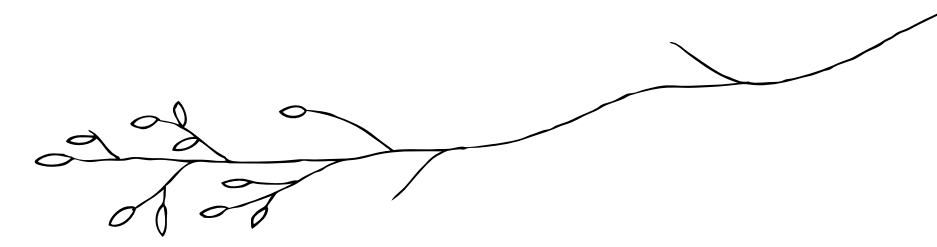
380 gr.

Contraportada/Quatrième de couverture/Back Cover/
Rückseite/Achterpagina/Quarta di copertina



CPT-26 VERSAILLES 86

335 gr.



CPT-406 VERSAILLES 81

490 gr.



CPT-205 COTTON-CASHMERE 52-59-61

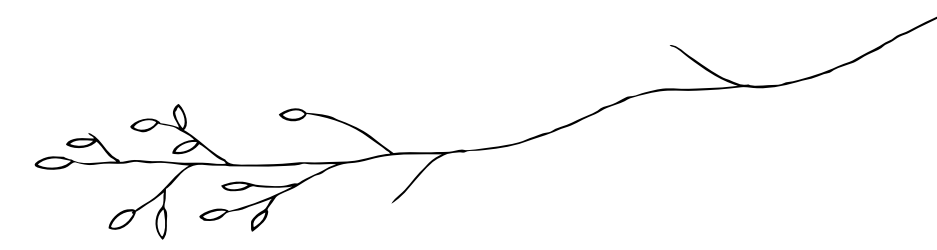
350 gr.

Katia

N.7

CONCEPT BY

Katia



CPT-403 COTTON-YAK 100-111-118

375 gr.

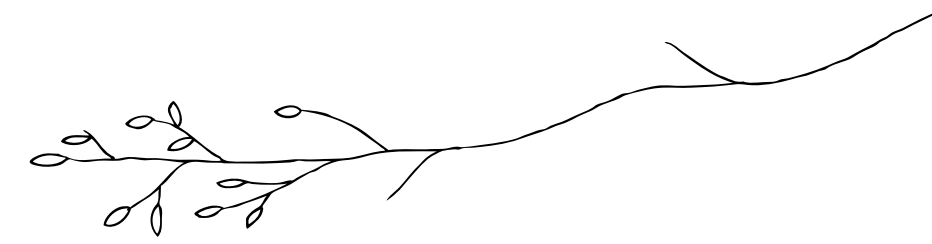
Katja

N.7

CONCEPT

BY

Katja



CPT-401 POLYNESIA 76

180 gr.



CPT-402 COTTON-ALPACA 82-80-97

295 gr.

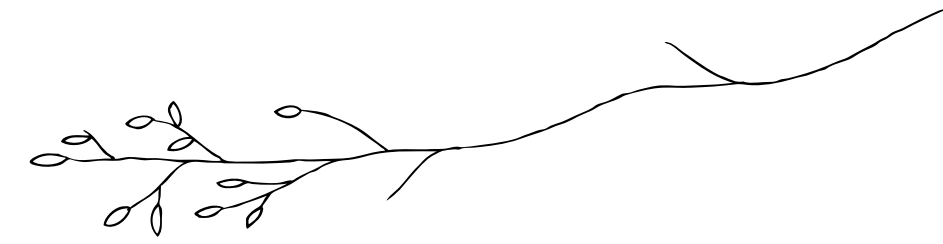
Katja

N.7

CONCEPT

BY

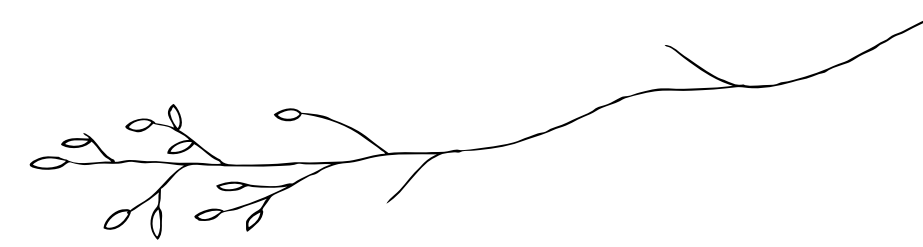
Katja



CPT-200 DUOMO 82



640 gr.



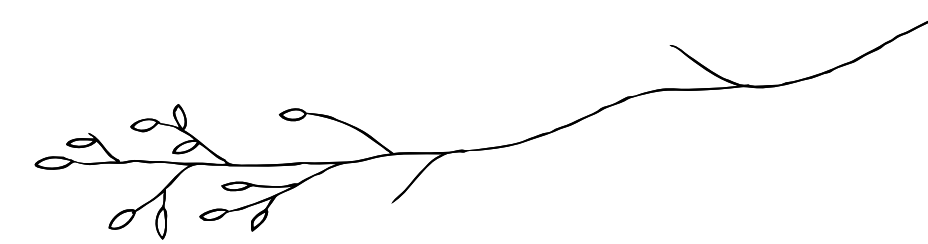
CPT-201A COTTON-ALPACA 96 280 gr.



CPT-201B COTTON-ALPACA 96 180 gr.



CPT-202 POLYNESIA 60-77 260 gr.



CPT-51 COTTON-ALPACA 80-86-98 355 gr.



CPT-50 DUOMO 80-94-83 415 gr.

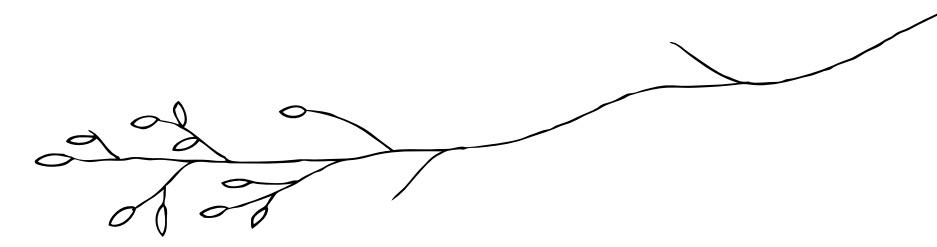
Katja

N.7

CONCEPT

BY

Katja



CPT-405 CALIOPE 66

445 gr.



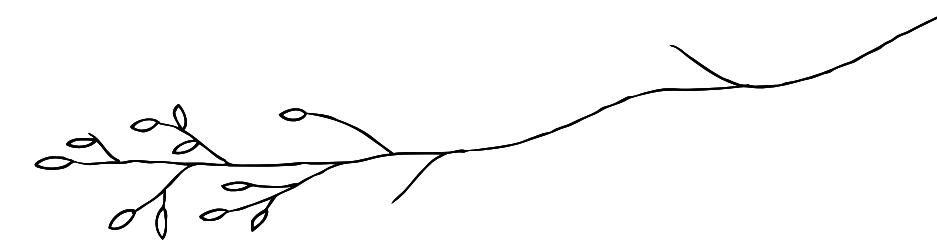
CPT-404 COTTON-CASHMERE 70

345 gr.

Katja

N.7

CONCEPT BY **Katja**



CPT-53 POLYNESIA 71-72

185 gr.

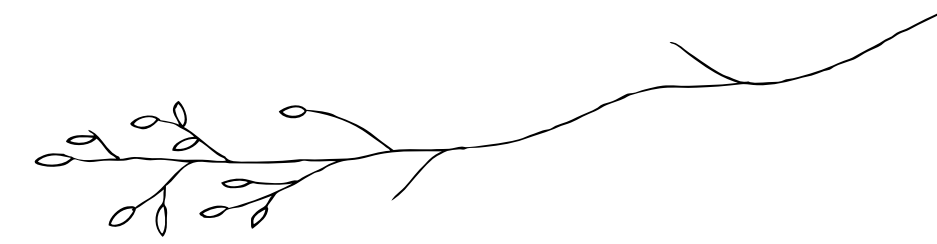
Katifa

N.7

CONCEPT

BY

Katifa



CPT-54 VERSAILLES 93



315 gr.

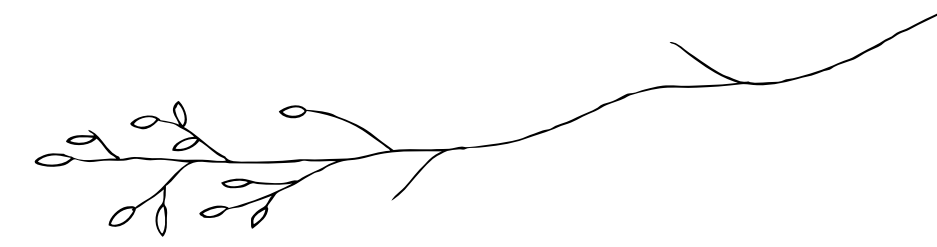
Katja

N.7

CONCEPT

BY

Katja



CPT-52 COTTON-ALPACA 96-99-97-100-86 400 gr.



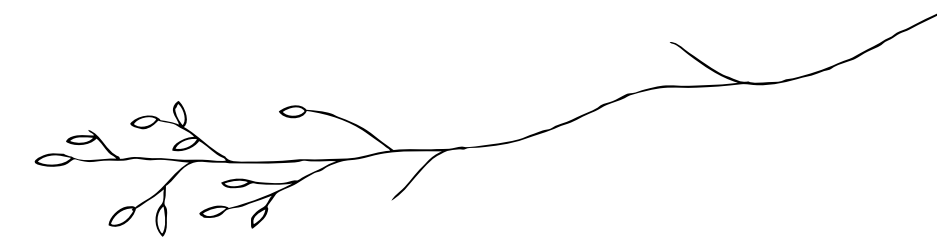
CPT-03 DUOMO 89 375 gr.



N.7

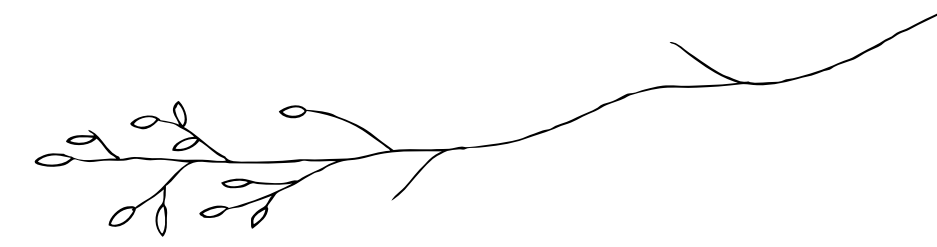
CONCEPT

BY



CPT-203 CALIOPE 62 + COTTON-YAK 100

435 gr.



CPT-102 COTTON-YAK 121

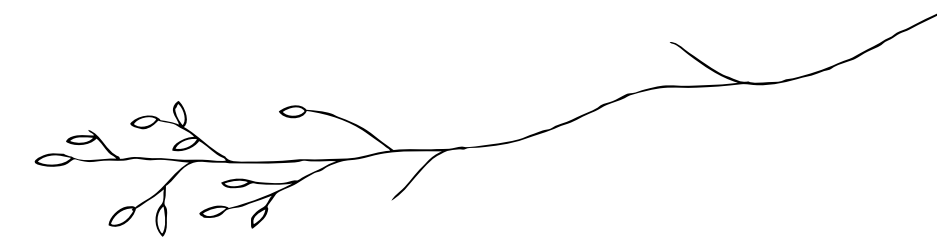


585 gr.



CPT-101 CALIOPE 63

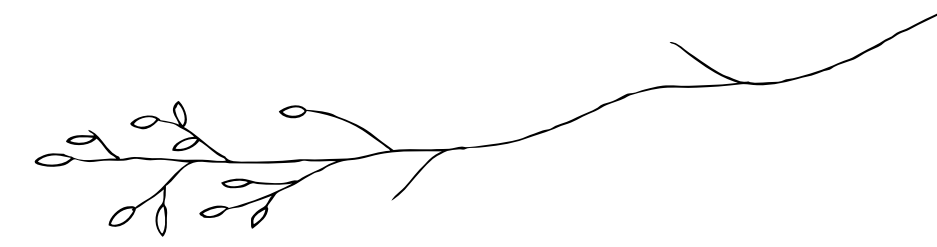
550 gr.



CPT-01 COTTON-CASHMERE 55
+ COTTON-ALPACA 89 150 gr.
CPT-11 COTTON-ALPACA 89 160 gr.



CPT-11 COTTON-ALPACA 89 160 gr.



CPT-02 POLYNESIA 62-79

290 gr.



CPT-100 POLYNESIA 62

245 gr.

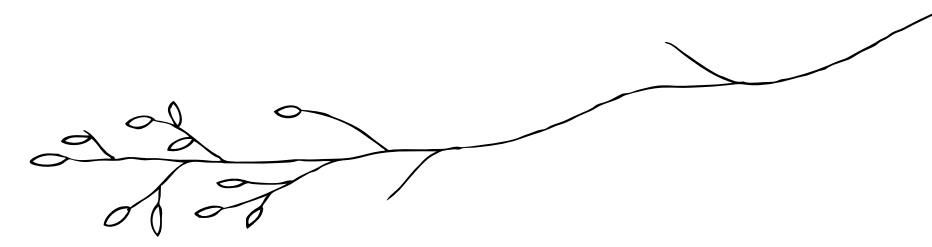
CPT-100A POLYNESIA 62

50 gr.

Katja

N.7

CONCEPT BY **Katja**



CPT-59 SILK DEGRADÉ 302

300 gr.