



fabrics

IMAGINE & CREATE




Fall 2017


**17**  **Adrift**  
Mirabelle/Santoro  
Pages 17-18

**23**  **Carnivale**  
Debi Payne  
Pages 23-24  
Project Page 64

**19**  **A Gardening We Grow**  
Dan Morris  
Pages 19-20  
Project Page 63


**59**  **Color Blends II**  
QT  
Pages 59-60  
Project Page 64

**21**  **All A Flutter**  
Karla Dornacher  
Pages 21-22  
Project Page 63

**49**  **Esme**  
JuneBee  
Pages 49-50  
Project Page 64


**55**  **Artworks**  
QT  
Pages 55-56  
Project Page 63

**25**  **Farmall Show**  
International Harvester  
Pages 25-26  
Project Page 64-65

**61**  **Avalon - 108"**  
QT  
Pages 61-62

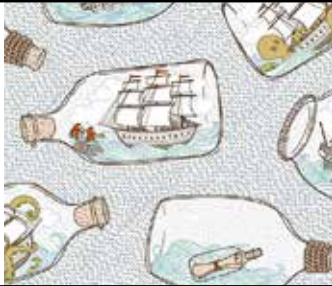
**27**  **Fowl Play**  
J. Wecker-Frisch  
Pages 27-28  
Project Page 65

**7**  **Belle**  
Studio 8  
Pages 7-8  
Project Page 64

**13**  **Garden Grandeur**  
Ivy Lane  
Pages 13-14  
Project Page 65

**In Deep Ship**  
 Ink & Arrow/  
 Alicia Jacobs-Dujets

Pages 47-48  
 Project Page 65



47

**Petit Pals**  
 Studio 8


Pages 11-12  
 Project Page 67



11

**Jungle Buddies**  
 Dan Morris

Pages 29-30  
 Project Page 65



29

**Portofino**  
 Conrad Knutsen

Pages 35-36  
 Project Page 67



35

**Little Squirt**  
 Studio 8

Pages 9-10  
 Project Page 66



9

**Sew & Go**  
 QT

Pages 57-58



57

**Manor House**  
 Conrad Knutsen

Pages 31-32  
 Project Page 66



31

**Songs of Nature**  
 Robert May

Pages 37-38  
 Project Page 67



37

**Moxie**  
 JuneBee

Pages 51-52  
 Project Page 66



51

**Thalia**  
 JuneBee

Pages 53-54  
 Project Page 67



53

**Mustang Sunset**  
 Dan Morris

Pages 33-34  
 Project Page 66



33

**Tranquility**  
 Lynnea Washburn

Pages 39-40  
 Project Page 68



39

**41** She does not Stash..  
  
**The Quilted Cottage**  
 Desiree  
 Pages 41-42  
 Project Page 68

**43**  
  
**Where the Wise Things Are**  
 Dan Morris  
 Pages 43-44  
 Project Page 68

**Projects . . . . . 63-68**  
**USA-Company Regional Sales Managers . . . . . 69**  
**Canadian & International Distributors . . . . . 70**



**Quilting Treasures is now QT Fabrics!**

With the growing popularity of sewing, crafting, and diy-ing, we move ever-forward. We continue to offer high quality fabric, in creative and beautiful designs, with our extraordinary customer service. QT Fabrics is here to serve our independent fabric shops, collaborate with the best in the industry, and bring you quality textiles in an array of designs and styles. **QT Fabrics... we imagine, so you can create!**

**Our Customer Service Department is available  
 Monday - Friday: 8:30 AM - 5:00 PM EST**  
**Tel: 800-876-2756**  
**Fax: 800-540-7063 • 401-275-9328**

**QTfabrics.com • inkandarrowfabrics.com**

View collections online. Browse tools that support you, the shop owner.  
 Shop when YOU want!  
**Log on now to request an account**



**An Employee-Owned Company**

*Images throughout catalog are for inspiration only unless otherwise noted. Similar projects can be found online.*

Our QT Fabrics team extends beyond our employee-owners. We work with creative and dedicated artists to expand our in-house studio talent. We are committed to providing an array of collections suited to many different styles. Collaboration is the QT Fabrics way!

# Designers

**Karla Dornacher**



**All A Flutter  
Page 21**

I love drawing, painting and just being creative! Since I first became aware that my art ability was a gift from God, it has been my hearts desire to use it to glorify Him... and to be a blessing and encouragement to others.

**Alicia Jacobs Dujets**



**In Deep Ship  
Page 47**

Alicia Jacobs Dujets is an illustrator and designer based out of northern New Jersey. She earned her MFA in Illustration as Visual Essay at the School of Visual Arts and her BFA at the Maryland Institute College of Art. She is honored to have work included in American Illustration, TED Books, and SMITH Magazine.

**J. Wecker-Frisch**



**Fowl Play  
Page 27**

Illustrator Janet Wecker-Frisch works from her home studio in St. Louis, MO and attributes her artistic ability to a 'God given' talent. Formal classes in commercial art accompanied by a twenty year art based business was the path that led her to Art Licensing and fabric design. There are three identifiable elements to her designs; her visual humor, heartfelt messaging and images we can all relate to.

**Desiree Habicht**



**The Quilted Cottage  
Page 41**

Desiree works in many media including watercolors, pastels, colored pencils, mixed media and fabrics. Desiree was introduced to quilting in 2001 when a family tragedy forced her to stay home to care for her daughter. She began using her artistic energy to design quilt patterns and art quilts, many which were based on murals that she had painted.

**Conrad Knutsen**



**Manor House Page 31  
Portofino Page 35**

Conrad is an extremely versatile artist and designer whose love of art has been a lifelong obsession. As well as creating works of art for national and international distribution, he has also been an educator of art design on a college level and a designer of textile goods. His abilities include a mastery of oils, watercolors, acrylics, silk screening, intaglio printing and most recently, the digital arts.

**Robert J. May**



**Songs of Nature  
Page 37**

Robert spent approximately 15 years as a graphic artist, painting animal and landscape studies in his spare time, which were sold through local galleries. In 1983, he decided to concentrate on Fine Art aspect and was subsequently commissioned to paint a range of greeting card designs depicting dogs. These proved to be very popular and are still on sale today.

**Dan Morris**



**A Gardening We Grow, Jungle Buddies, Mustang Sunset, Where the Wise Things Are  
Pages 19, 29, 33, 43**

Since 1994 Dan Morris has been creating innovative, original art for a broad array of industries. From T-shirts for the Grateful Dead, 1960's inspired peace stickers, and celestial calendars, to more traditional home and gift markets, Dan has a wide range of eclectic artwork spanning almost every artistic theme.

**Debi Payne**



**Carnivale  
Page 23**

Debi enjoys creating paintings that consist of bold and bright colors and are whimsical in nature. Along with her fine art paintings she has also created Debi Payne Designs where she creates graphic designs that are used for various manufactured products.

**Studio 8 & Ivy Lane**



**Belle, Little Squirt, Petit Pals, Garden Grandeur  
Pages 7-14**

Studio 8 lines are created in-house by our talented design team in New York. Led by Design Director Janet Andersen, our studio develops fabric prints reflecting the latest trends in color and design.

Rosanne Abbenda, Cindy Sepp, Felicia Gallo, Alicia Jacobs Dujets and Monica Zhu work together to bring fabrics styled for dynamic projects with a modern flair.

**Lynnea Washburn**



**Tranquility  
Page 39**

Lynnea has worked in the art licensing industry since 1989 in a variety of roles including Art Director, Writer and Artist. Lynnea has worked in a variety of mediums, but enjoys the mercurial nature of watercolor above all. Lynnea's work can be found on products for home decor, gifts and stationery, and is carried by an array of independent gift retailers and mid-tier chain stores.

# Employee Owners

## President



Ken Gamache

## Customer Service



Justina Pina



Luis Torres



Debra Voelker

## Design Studio



Janet Andersen



Alicia Jacobs-Dujets



Felicia Gallo



Monika Zhu



Cindy Sepp



Rosanne Abbenda

## Supply Chain



Thomas J. Kemble



John Ferreira



John Fraioli



Brian Millar

## Marketing



Tiffany Jawor-Smith



Autumn Laskowski



Isabelle Sanchez

## Regional Sales Managers



Jayne Clark



Debra Coffman



Kevin Driscoll



Mike Flynn



Ann Haley



Martha Manning-Jurey



Sarah Maylath



Coby McComas



Jesus Montero



Kay Peterson



Tammie Randle



Barbara Wing



**STUDIO** 

# Belle

A flowery delight! These prints from Studio 8 feature trending watercolor florals. Designed with gorgeous color and style, the blooms are highlighted beautifully by the textural coordinate prints. Sophisticated and bold, these are choice prints for apparel, home décor and accessories!



26417 W



26418 G



26418 W



Orders in by October 15<sup>th</sup>  
will ship mid January

STUDIO8



26419 S



26419 G



26419 W



26420 OS



26420 WG



26420 VW



26421 O



26421 G



26421 W



Claire Bag Project by Lazy Girl Designs



# Little Squirt

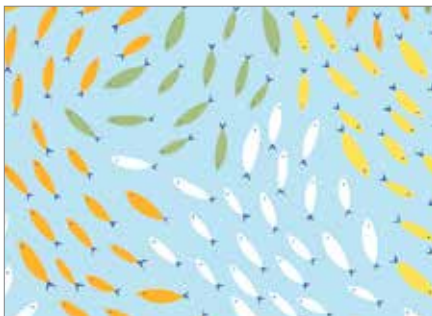
*There is so much fun and style in this whale of a collection from Studio 8! Lots of swirling dots and water droplets help create fresh prints to coordinate with the adorable main whale design. Sea what you can create for your favorite little one!*



26444 Z



26444 B



26447 B



26447 S



26447 Z



26449 S



26449 B



26449 SZ

Orders in by November 15<sup>th</sup>  
will ship mid February

STUDIO8



26445 B



26445 BZ



26446 B



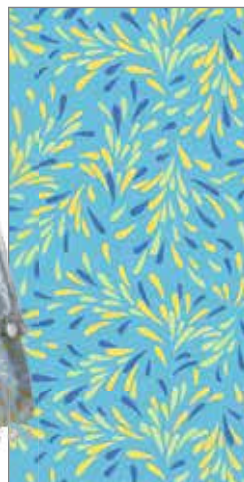
26446 S



26448 B



26448 Z



26450 B



26450 BZ



26450 Z

# Petit Pals

Little woodland animals star in this adorable Studio 8 collection. The main print is an allover of the friends frolicking in the forest. The harlequin and stripe textural coordinates work well on their own or with the cute trees, leaves and gingham prints... Lots of possibilities with this group for the perfect little nursery.

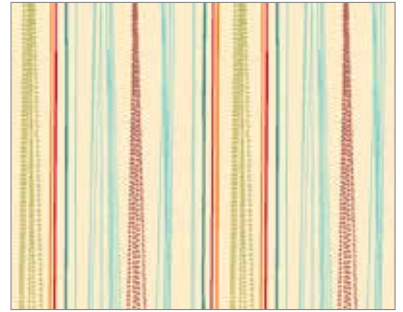
Studio 8



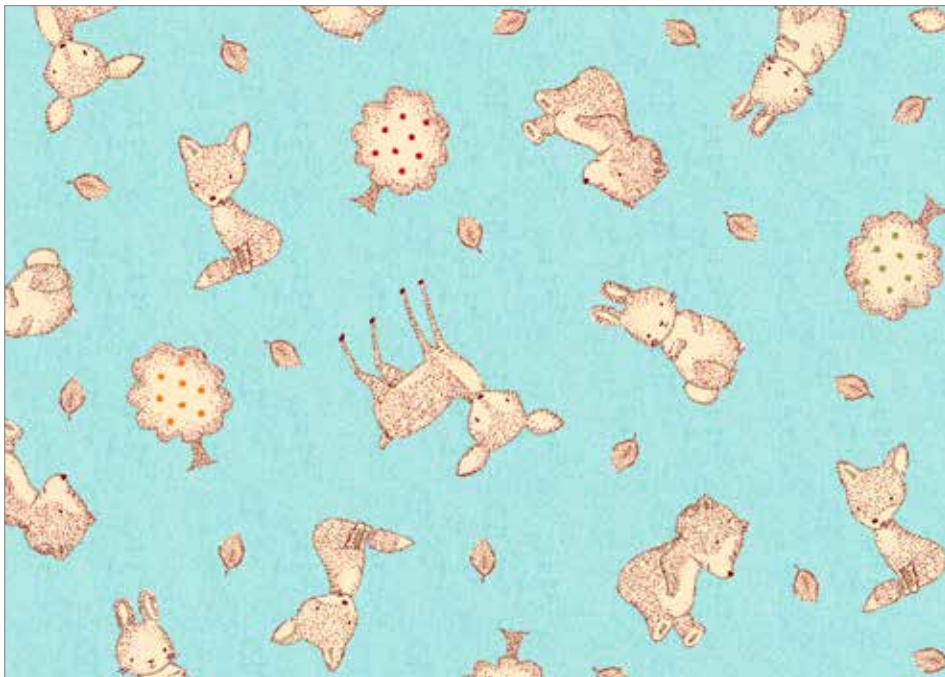
26375 O



26379 Q



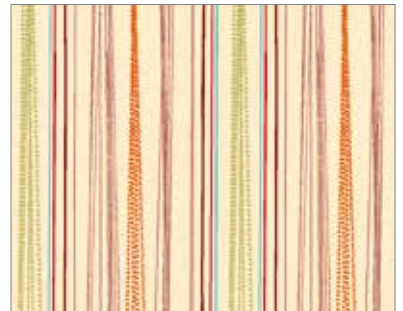
26380 QE



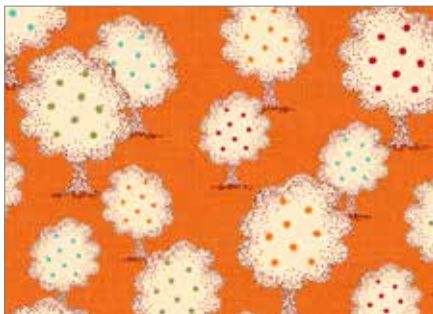
26375 Q



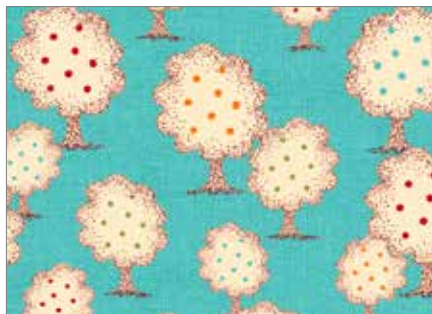
26379 O



26380 AE



26376 O



26376 Q



26376 H

Petit Pals

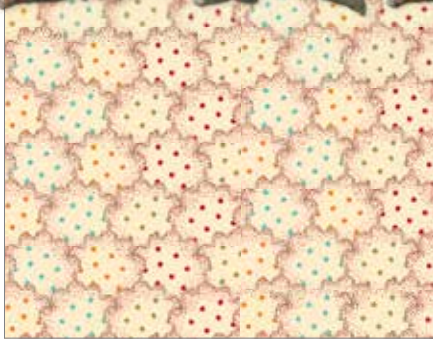
11

Orders in by October 1<sup>st</sup>  
will ship mid December

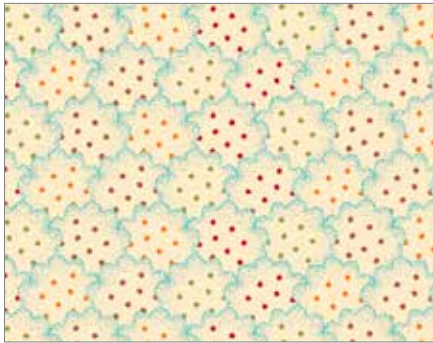
STUDIO 8



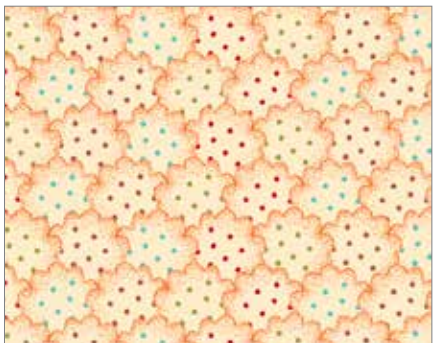
BABY



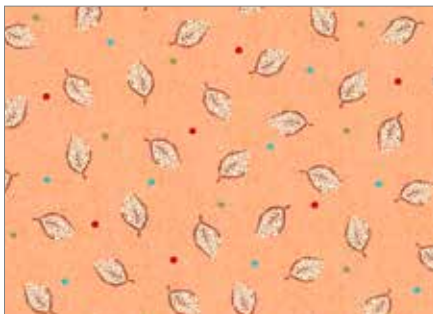
26378 AE



26378 QE



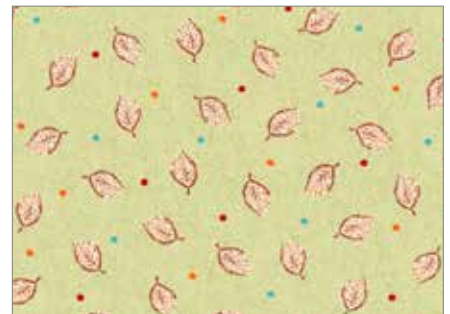
26378 OE



26377 O



26377 Q



26377 H



# GARDEN GRANDEUR

Stunning and elegant describe these prints from Ivy Lane. A large repeating border design allows for many dazzling project opportunities! With a unique blooming tree print, all-over florals, tonal paisley and swirling mini design, this distinctive collection has a myriad of possibilities to recreate a garden of grandeur.

Ivy Lane



26489 B



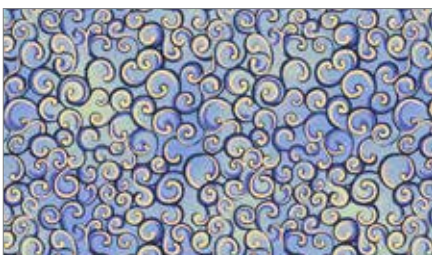
26491 B



26491 P



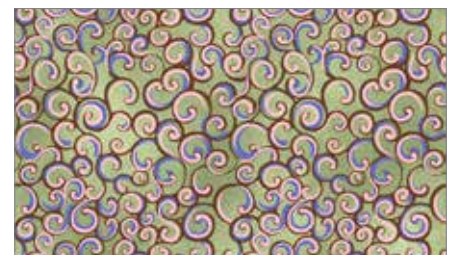
26491 G



26494 B



26494 P



26494 H

Garden Grandeur

Orders in by November 15<sup>th</sup>  
will ship mid February

*ivy lane*



26490 N



26490 P



26490 H



26492 B



26492 P



26492 H



26493 B



26493 C



26493 G



fabrics

IMAGINE & CREATE

Conrad & Kruttschnitt





*Conceal Knutsen*



**QT** fabrics  
IMAGINE & CREATE

# Adrift

*Adrift embarks on an ethereal journey of mermaids and ocean motifs in a collection of fabrics featuring sophisticated signature style of &copy; Mirabelle. With muted colors and intricate detailed artwork, these prints will allow for a project of beauty and grace.*

Mirabelle



26439 H



26440 C



26440 H

Adrift

17

Orders in by November 15<sup>th</sup> will ship mid February



26441 B



© SANTORO



26441 H



26443 T



26443 B



26443 H



26442 T



26442 H



26442 C

# A Gardening We Grow

Buzzing bees and seed packets are just a couple of the creative and fun prints in this new collection by Dan Morris. Gardeners will delight in these pretty prints showing the necessities to grow those flowers and vegetables! Create inspired gardening aprons or kitchen décor with this lovely collection!



26495 C



26495 E



26495 J



26496 E



26496 G



26497 S



26497 G



26498 J



26498 E



26501 C



26501 S



26501 E



26499 C



26499 S



26499 J



26500 C



26500 S



26500 H

# All a Flutter

This collection is all-a-flutter with cheery color and joyful florals. The patch design, featuring beautiful butterflies, are waiting to star in your next project! Karla Dornacher is an artist sharing encouragement and bliss through her designs. Make a delightful quilt with this collection, and bring more happiness to your home!

Karla Dornacher



26358 R



26359 P



26359 Q



26359 Z



26361 R

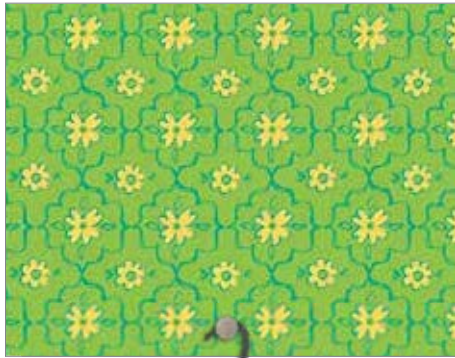


26361 Q

All A Flutter

21

Orders in by November 15<sup>th</sup> will ship mid February



26362 H



Project from Indygo Junction: Very Mary Apron



Project from Indygo Junction: Banded Beauty Headband



26362 S



Project from Indygo Junction: Flying Geese Quilted Wristlet



26362 Q



26362 R



26360 R



26360 Z



26363 Q



26363 P



26363 Z

# CARNIVALE

Bold and bright, uplifting and hypnotic, these prints combine for a dynamic collection in prismatic color. Accented with black, the color pops and the detailed artwork shines. These vivid fabrics are perfect for eye-catching quilts, accessories and home décor.

Debi Payne



26369 JX



26369 ZX



26373 J



26373 Q



26373 Y

Candice Purse Project by Lazy Girl Designs



Carnivale



Orders in by October 1<sup>st</sup> will ship mid December

Debi Payne



Debi Payne



26370 J



26370 Z



26371 Q



26371 Y



26372 J



26372 Z

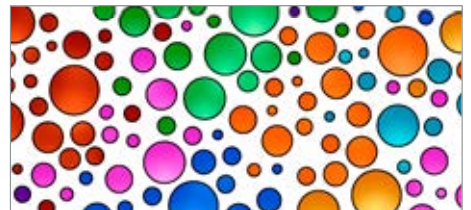
Project from Serendipity Studio: Marilyn Dress



26374 JH



26374 JX

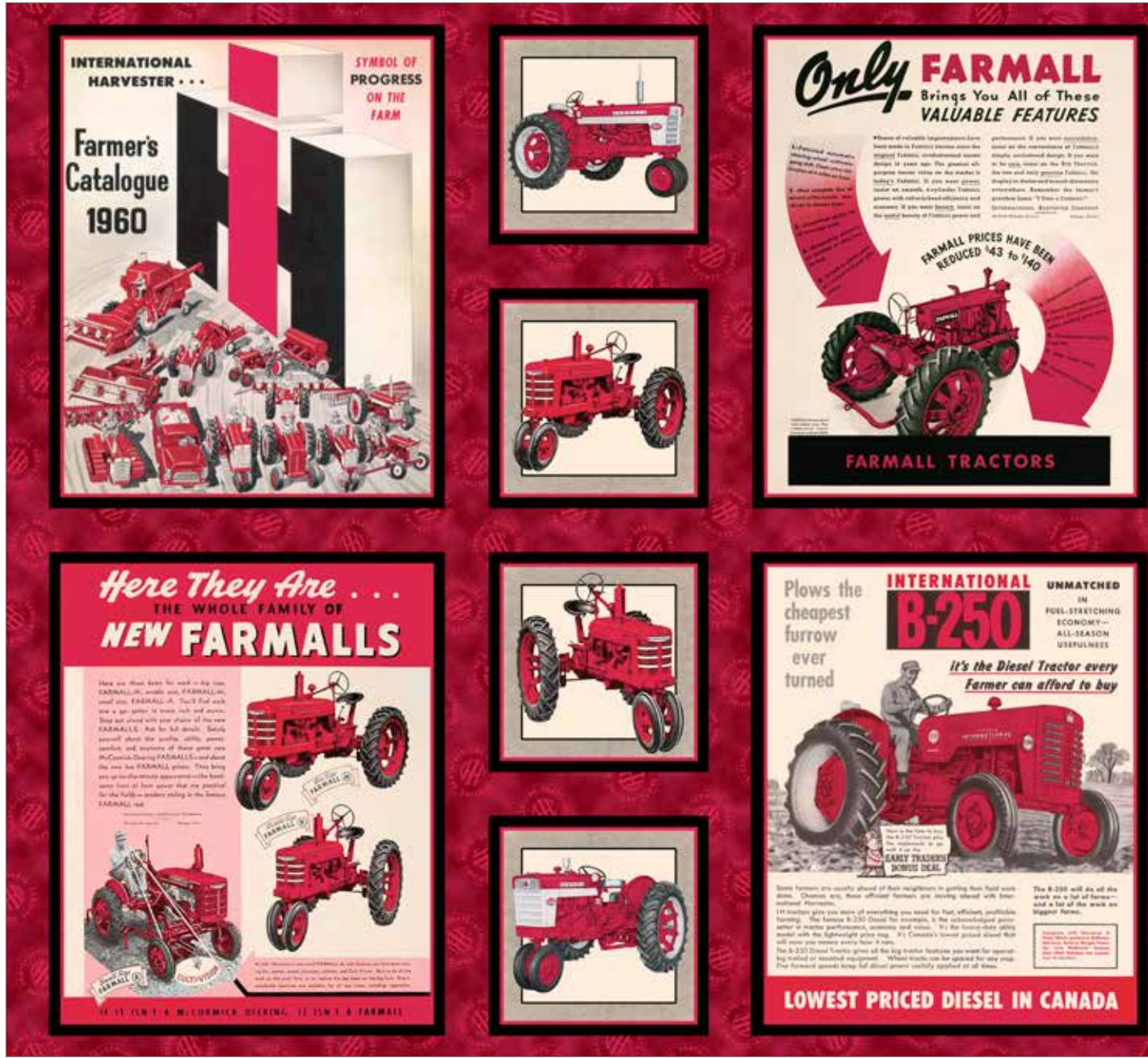


26374 ZX

Carnivale

# FARMALL SHOW

This collection celebrates the pride of our American agricultural history with Farmall tractors! With vintage styling, these catalogs and posters are featured in a multi-sized patch panel. Accented with black, gray and cream colors, the allover tractors and various logos pop with the signature red of the Farmall brand.



26451 R



26452 E



26452 J



26452 K

Orders in by October 1<sup>st</sup> will ship mid December



MCCORMICK  
**FARMALL**  
MADE IN U.S.A. • INTERNATIONAL HARVESTER COMPANY • CHICAGO U.S.A.



**Since 1923  
The Farmall System of Farming  
has set the pace**



**The Original Farmall—Built in 1923**

It was the original Farmall, the first ever made, which set the pace for the world of tractors. It was the original Farmall, the first ever made, which set the pace for the world of tractors. It was the original Farmall, the first ever made, which set the pace for the world of tractors.





**SEE THE GREATEST  
FARMALL SHOW ON EARTH  
AT THE STATE FAIR**

Featuring the Nationally Famous  
Farmall **FAST-HITCH** Motor Tractor Drive



Measure - Compare  
Prove to yourself  
SEE FARMALL  
**Fast-Hitch**  
IN ACTION!

Don't miss this sensational  
Place-to-see opportunity at  
the  
**INTERNATIONAL HARVESTER EXHIBIT**

Come in—see and try the New Farmall Fast-Hitch



Dinner's Ready Apron Project by QT Fabrics



26453 E



26453 K



26453 KZ

© IH, Case IH are registered trademarks of CNH America LLC.

# FOWL PLAY

Sophisticated farmhouse décor has arrived. This collection, with vintage ephemera, features farm life, chickens and a grocery ledger. The touches of red and yellow throughout the collection pop against the black and white etchings. Create kitchen accessories and farmhouse chic projects with this new collection from Janet Wecker-Frisch.



26464 E



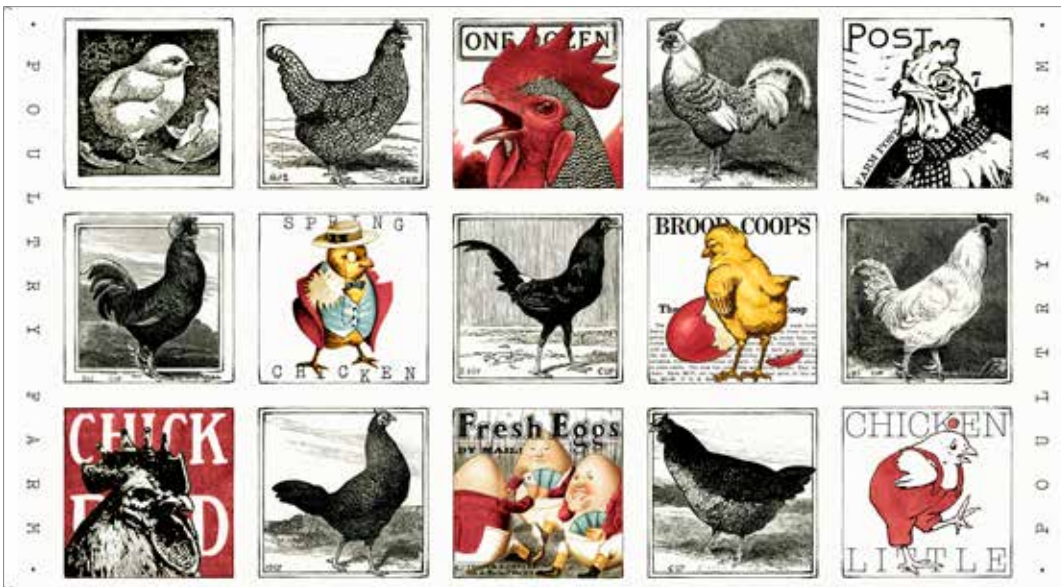
26471 K



26471 R



26471 S



26465 E



26472 J



26472 R



26468 K



26468 E



26472 E



26472 K

Orders in by October 15<sup>th</sup>  
will ship mid January

# Janet Wecker-Frisch



Janet Wecker-Frisch



26466 E

<i>My Nahlmann.</i>		<i>Emil Treesch.</i>		<i>Christe Keiler.</i>		<i>John Dell</i>	
9 1/2 Balances	12.75	2 1/2 20 Maise	7.50	1/2 1/2 1/2	1.50	July 2	1/2
Eggs 30	1.50	1/2 1/2 1/2	1.50	1/2 1/2 1/2	1.50	1/2	1/2
5 1/2 1/2 1/2	1.50	1/2 1/2 1/2	1.50	1/2 1/2 1/2	1.50	1/2	1/2
10 1/2 1/2 1/2	1.50	1/2 1/2 1/2	1.50	1/2 1/2 1/2	1.50	1/2	1/2
1 1/2 1/2 1/2	1.50	1/2 1/2 1/2	1.50	1/2 1/2 1/2	1.50	1/2	1/2
1/2 1/2 1/2	1.50	1/2 1/2 1/2	1.50	1/2 1/2 1/2	1.50	1/2	1/2

26470 S

31 1/2 1/2	1.50	1/2 1/2 1/2	1.50	1/2 1/2 1/2	1.50	1/2 1/2 1/2	1.50
1/2 1/2 1/2	1.50	1/2 1/2 1/2	1.50	1/2 1/2 1/2	1.50	1/2 1/2 1/2	1.50
1/2 1/2 1/2	1.50	1/2 1/2 1/2	1.50	1/2 1/2 1/2	1.50	1/2 1/2 1/2	1.50
1/2 1/2 1/2	1.50	1/2 1/2 1/2	1.50	1/2 1/2 1/2	1.50	1/2 1/2 1/2	1.50
1/2 1/2 1/2	1.50	1/2 1/2 1/2	1.50	1/2 1/2 1/2	1.50	1/2 1/2 1/2	1.50

26470 E

1/2 1/2 1/2	1.50	1/2 1/2 1/2	1.50	1/2 1/2 1/2	1.50	1/2 1/2 1/2	1.50
1/2 1/2 1/2	1.50	1/2 1/2 1/2	1.50	1/2 1/2 1/2	1.50	1/2 1/2 1/2	1.50
1/2 1/2 1/2	1.50	1/2 1/2 1/2	1.50	1/2 1/2 1/2	1.50	1/2 1/2 1/2	1.50
1/2 1/2 1/2	1.50	1/2 1/2 1/2	1.50	1/2 1/2 1/2	1.50	1/2 1/2 1/2	1.50
1/2 1/2 1/2	1.50	1/2 1/2 1/2	1.50	1/2 1/2 1/2	1.50	1/2 1/2 1/2	1.50

26470 J



26467 R



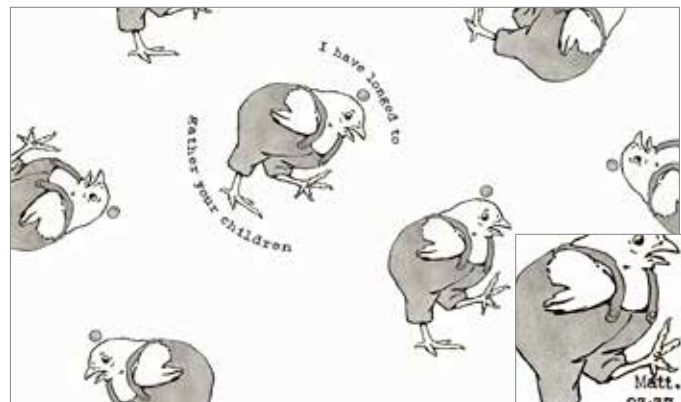
26467 K



26467 E



26469 R



26469 K



detail of verse

Fowl Play



*It's a jungle of fun! There are eight different animals featured in the patch prints, which one is your favorite? Dan Morris brings his artistry to the jungle and creates little buddies sure to become your favorite! In neutral colors with great coordinates, an adorable nursery, baby quilt or fun accessories for your favorite kid awaits!*



26413 E



26413 S



26413 J



26412 G



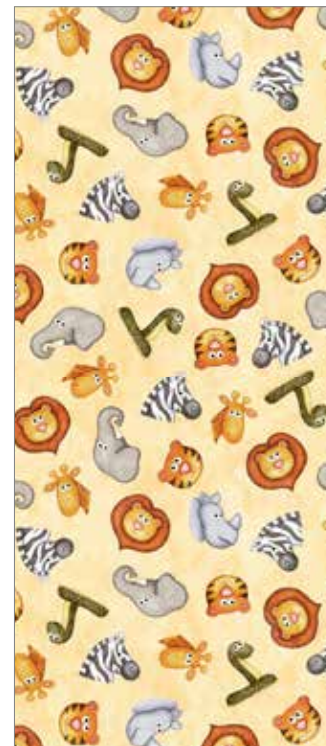
26411 E



26412 E



26412 J



26414 S

Orders in by October 15<sup>th</sup> will ship mid January

Dan Morris



26411 J



26415 E



26415 G



26414 G



26416 S



26416 J



26415 J



26416 G

# Manor House

A tryptic panel with majestic peacocks in sunset orange and rich burgundy colors creates a unique style. Coordinating florals, ornamental swirls, a foulard and a delicate tonal print work together to add elegance to this collection.



26395 O



26396 O



26396 A



26399 M



26399 O



Candice Purse Project by Lazy Girl Designs



Orders in by October 1<sup>st</sup> will ship mid December

Conrad Knutsen



Project from Indigo Junction:  
The Quilted Kitchen Double Ended Potholder



26397 A



26397 M



26398 EM



26398 M

# MUSTANG SUNSET

Run wild and free with this stylish collection by Dan Morris. Large patches offer great focal blocks or pillow accents, the running stripe is an excellent quick border and detailed painted horses are balanced by the rustic silhouette horse print. The blend of textural and painterly techniques creates a unique collection great for any horse enthusiast.

Dan Morris



26486 A



26486 T



26486 B



26488 E



26488 T



26488 N



26479 E

26479 N



26481 E



26482 E



26482 B



26484 E



26484 N

Mustang Sunset

Orders in by October 1<sup>st</sup> will ship mid December

Dan Morris



26480 E

26480 N

Dinner's Ready Apron Project by QT Fabrics



26485 W



26483 E



26483 N



26485 E



26487 E



26487 B



26487 A

# Portofino

*This new collection from Conrad Knutsen features a large, striking floral print and elaborate ornamental designs in rich colors. The delicate swirling tonal print and foulard offer unique variety to this collection.*

Conrad Knutsen



Project from Serendipity Studio: Marilyn Dress

26400 Q

© Conrad Knutsen

Portofino

35

Orders in by October 1<sup>st</sup> will ship mid December

Conrad Knutsen



26397 Q



26397 E



26399 S



26399 Q



26399 E



26401 S



26398 EQ



26398 Q



26401 Q

# Songs of Nature

Beautifully rendered birds are featured in this collection full of glorious color and florals. The musical note blender prints accent the splendor and charming chirps which embody these song birds. Create gorgeous projects that make you feel as if you stepped into the garden.

Robert May



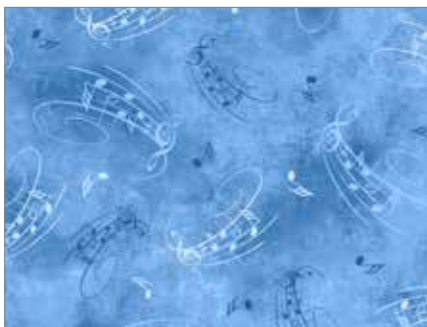
26364 B



26366 B



26366 N



26368 B



26368 P



26368 H

Orders in by November 15<sup>th</sup>  
will ship mid February

Robert May



Robert J. May

Robert May



26365 B



26367 N



26367 E



26367 R



Project from Indygo Junction: Betsy Apron

# Tranquility

*This collection is so calm and serene. Lynnea Washburn offers her beautiful artistry to this collection of fabrics inspired by the tranquility of nature. The large patch design includes decorative print accents to offset the focal image for a unique block. Pillows and table top are just a couple of great project ideas for your favorite retreat!*



26390 E



26391 B



26391 E



Orders in by November 15<sup>th</sup> will ship mid February

Lynnea Washburn



26392 B



26392 BE



26392 E



26394 E



26394 B



26394 EA



26393 E



26393 B



26393 BE

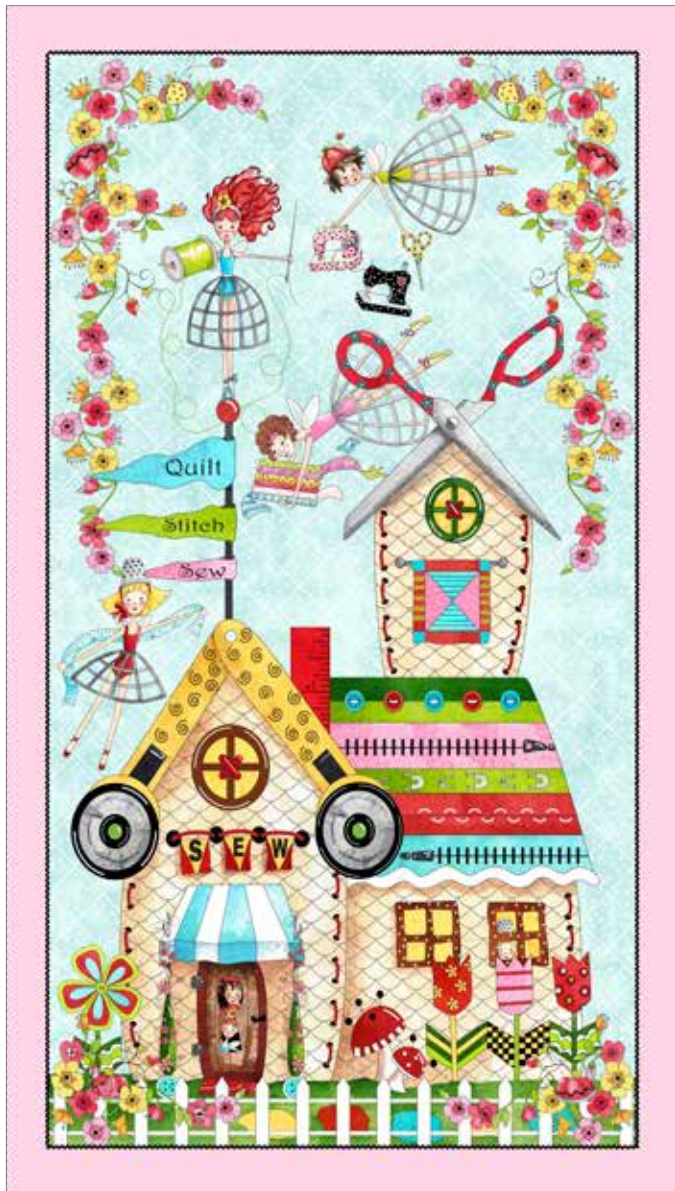
© Lynnea Washburn



Claire Bag Project by Lazy Girl Designs

# The Quilted Cottage

This collection features the whimsical world of Desiree's Quilted Cottage. It looks like sew much fun! The large panel print, patch print with phrases and all-over designs feature sewing themed motifs brought together with playful color and blenders. Enjoy your visit to The Quilted Cottage and make a project to celebrate your favorite past-time.



26422 X



26424 E



26424 Q



26426 S



26425 X



26426 P

Orders in by October 15<sup>th</sup> will ship mid January

Desiree Habicht



Desiree's Designs



26423 E



26427 R



26428 R



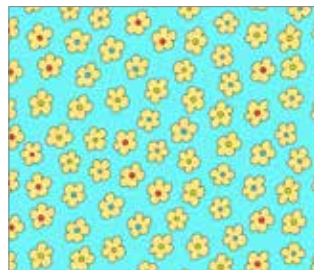
26429 R



26430 P



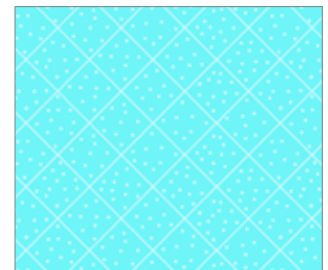
26427 Q



26428 Q



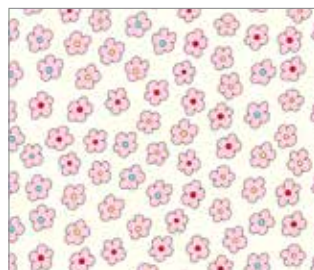
26429 Q



26430 Q



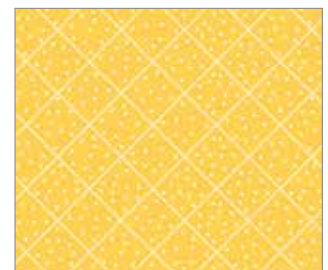
26427 H



26428 E



26429 H



26430 S



Dan Morris delivers another gorgeous collection featuring beautifully patterned owls. His unique styling offers detailed design, rich colors and great prints. The medallion, with subtle accents, fern print with a foulard-type layout and decorative allovers bring sophistication and variety to your next quilt or home décor project.



26527 J

26527 E



26529 A



26529 J



26529 T



26430 E



26430 J



26430 T

Orders in by October 15<sup>th</sup> will ship mid January

Dan Morris



Dan Morris



26528 E



26528 J



26528 Q



26531 E



26531 Q



26531 T



26532 E



26532 J



26532 Q



junebee 

FOR INK & ARROW FABRICS

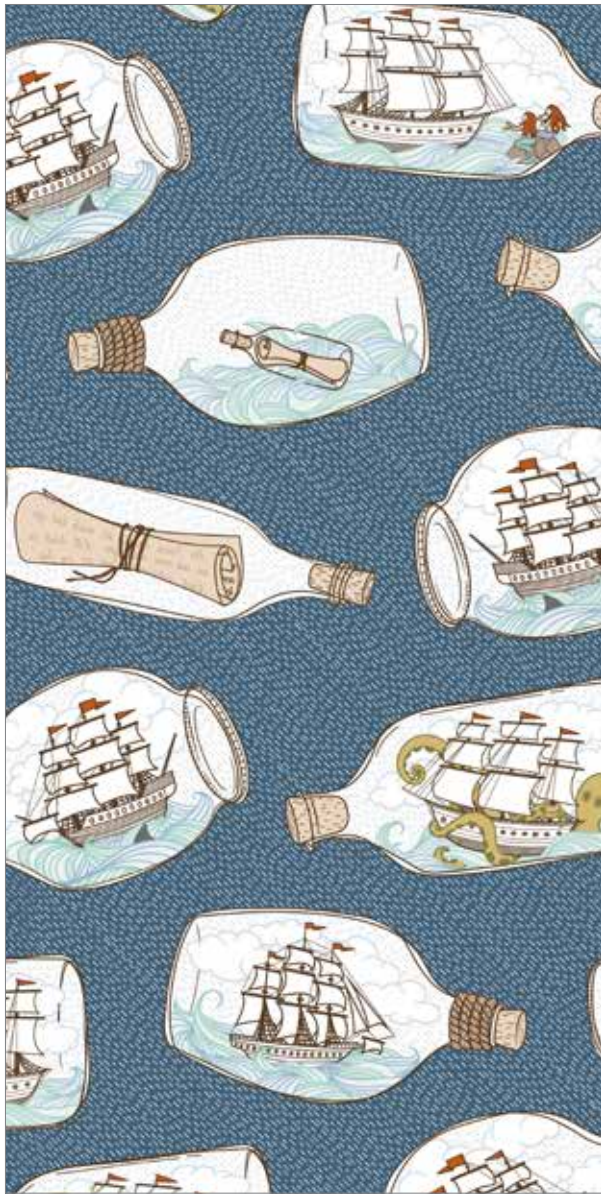




← INK & ARROW →  
F A B R I C S

# IN DEEP SHIP

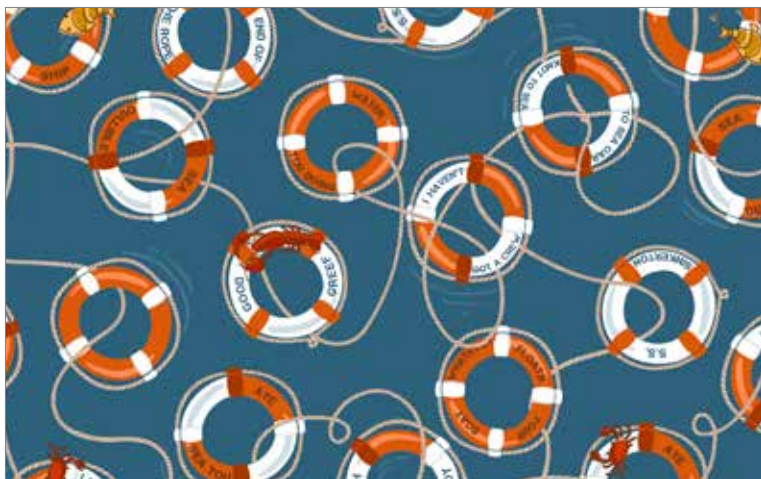
"Seas" the day and anchors aweigh with this clever collection from Alicia Jacobs Dujets. Ships in bottles... messages in bottles... these prints are a treasure trove of fun! Set sail for projects with an ocean of adventure with your new nautical friends!



26454 W



26454 Z



26456 W



26456 B

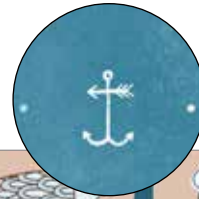
Project from Serendipity Studio:  
Sally Shirt Dress



Orders in by October 15th will ship mid January



look for us in every print



26455 Z



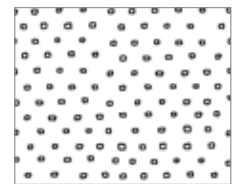
26455 W



26457 O



26457 W



24299 Z



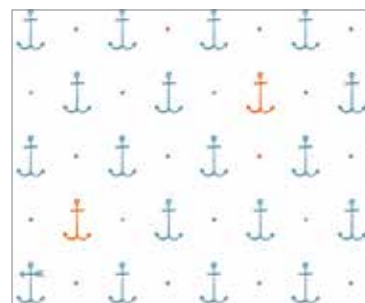
24299 QH



26458 O



26458 W



26458 Z



24299 A

# Esme

Bold geometrics and color come together for an eccentric collection from Junebee. The main design has prints within a print to offer various looks across the fabric. Ladybugs appear to accent the group as almost dot-like accents. Mixing and matching is the fun of this collection; what will you create?

Junebee



26405 K



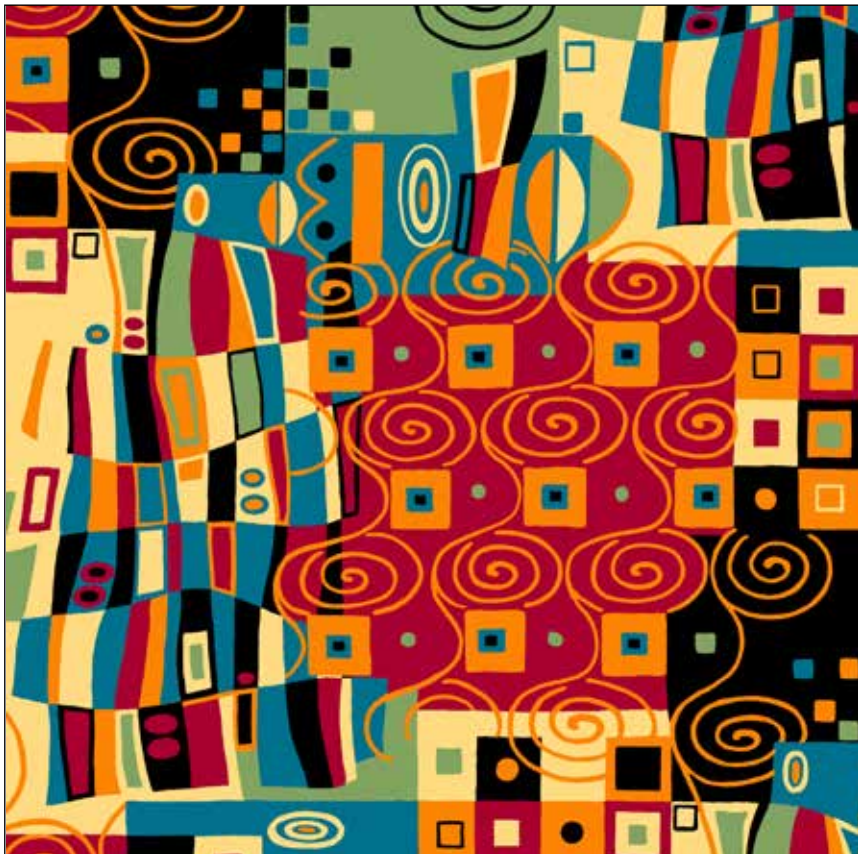
26106 RJ



26106 SO



26106 SR



26405 X



Project from Lazy Girl Designs: Margo Handbag

Esme

Orders in by October 1<sup>st</sup> will ship mid December



26406 K



26406 O



26409 K



26409 J



26408 R



26408 J



26407 A



26407 B



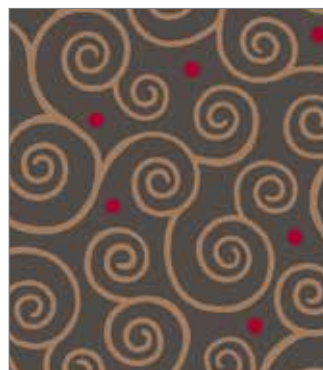
26407 S



26410 B



26410 J



26410 K



26410 R

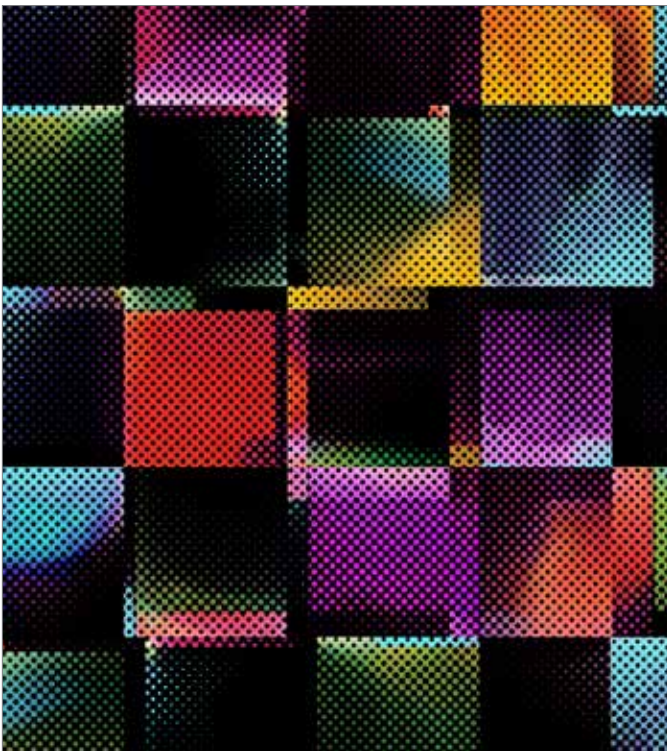
# Moxie

Another bold collection from Junebee! Overprinting and vivid colors add dimension to these designs. Mix and match the fabrics to go more modern or keep a classic style, it's up to you! Projects that pop are coming your way with Moxie!

Junebee



26459 X



26462 J



26462 M



26106 OV



26106 SO

Moxie

Orders in by November 15<sup>th</sup> will ship mid February



26461 X



26461 S



26461 V



26460 V



26460 R



26463 J



26463 O



26463 S

# THALIA

Vintage florals and paisley prints come together and play with overprints and modern dots for lots of flair! On-trend color stories shine with these mix and match prints. Make a dress, handbag and a quilt with lots of variety!



26382 E



26382 N



26384 C



26384 Q



26384 B



Project from Indigo Junction: IJ941 Ruffle Trio Large

Orders in by October 15<sup>th</sup> will ship mid January



26383 C



26383 E



26383 N



26385 EC



26385 Y



26385 EQ



26106 YQ



26106 HY



26106 OP



26106 SO

# ARTWORKS

The latest digital prints from Artworks bring a world of places and animals to you in striking detail! Venture into the wild with our wolf, giraffe and tiger panels or celebrate the beauty of our nation's landscapes. Whichever you choose, these are works of art on fabric! What will you create?



26438 X  
© Collin Bogle for Artworks

36" x 44"  
PANEL



26437 X  
© Val Warner for Artworks

24" x 44"  
PANEL



26436 K  
© Collin Bogle for Artworks

36" x 44"  
PANEL



26433 X  
© Jim Zuckerman for Artworks

ALLOVER  
REPEAT



Orders in by October 15<sup>th</sup> will ship mid January



26431 X  
© Jim Zuckerman for Artworks  
44" x 24" PANEL



26432 X  
© Jim Zuckerman for Artworks  
44" x 24" PANEL

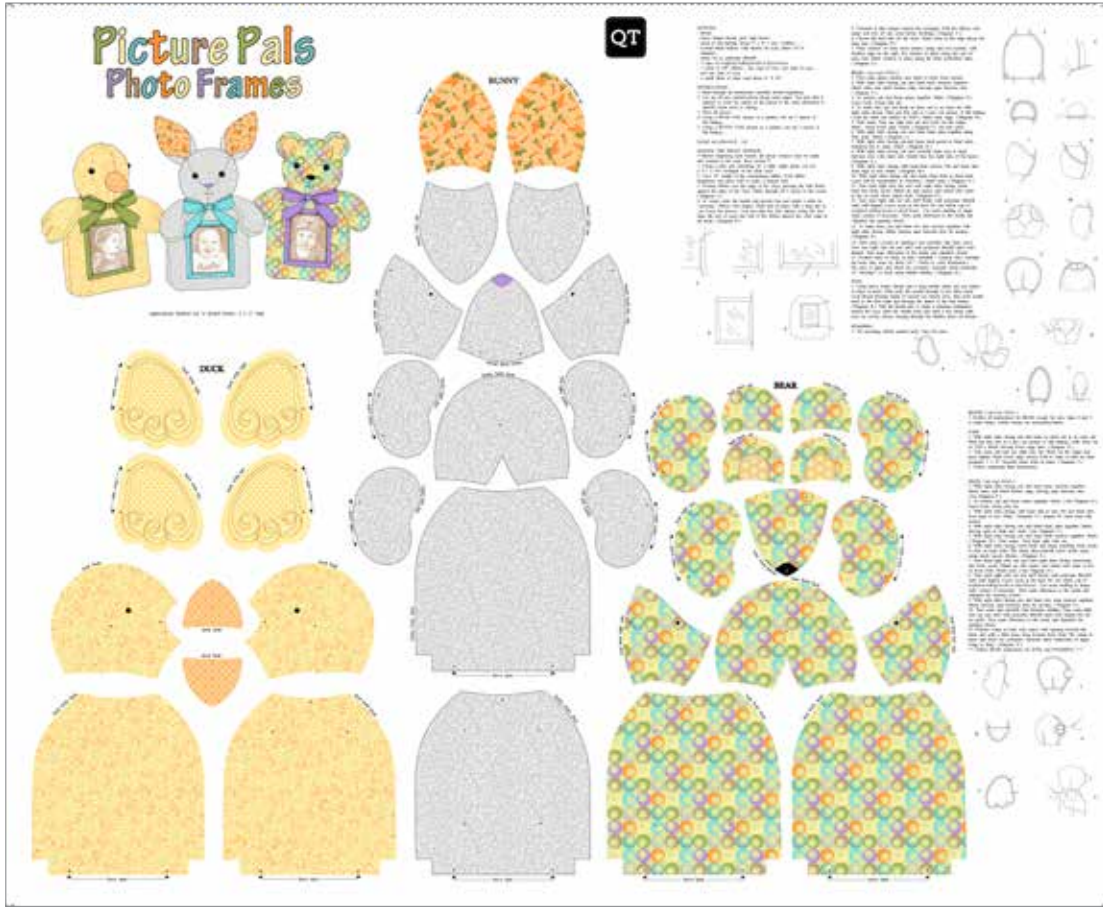


26434 X  
© Aaron Reed for Artworks  
44" x 24" PANEL

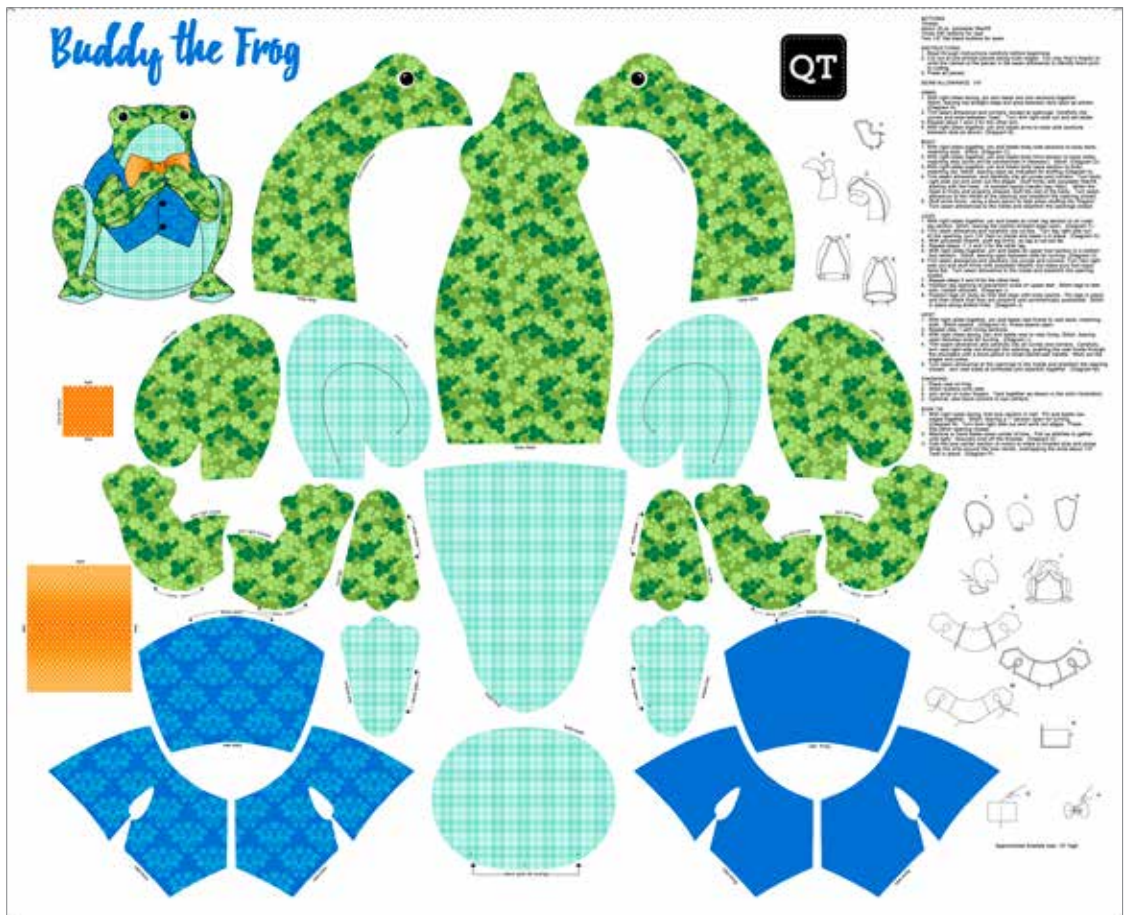


26435 X  
© Larry Hershberger for Artworks  
44" x 24" PANEL

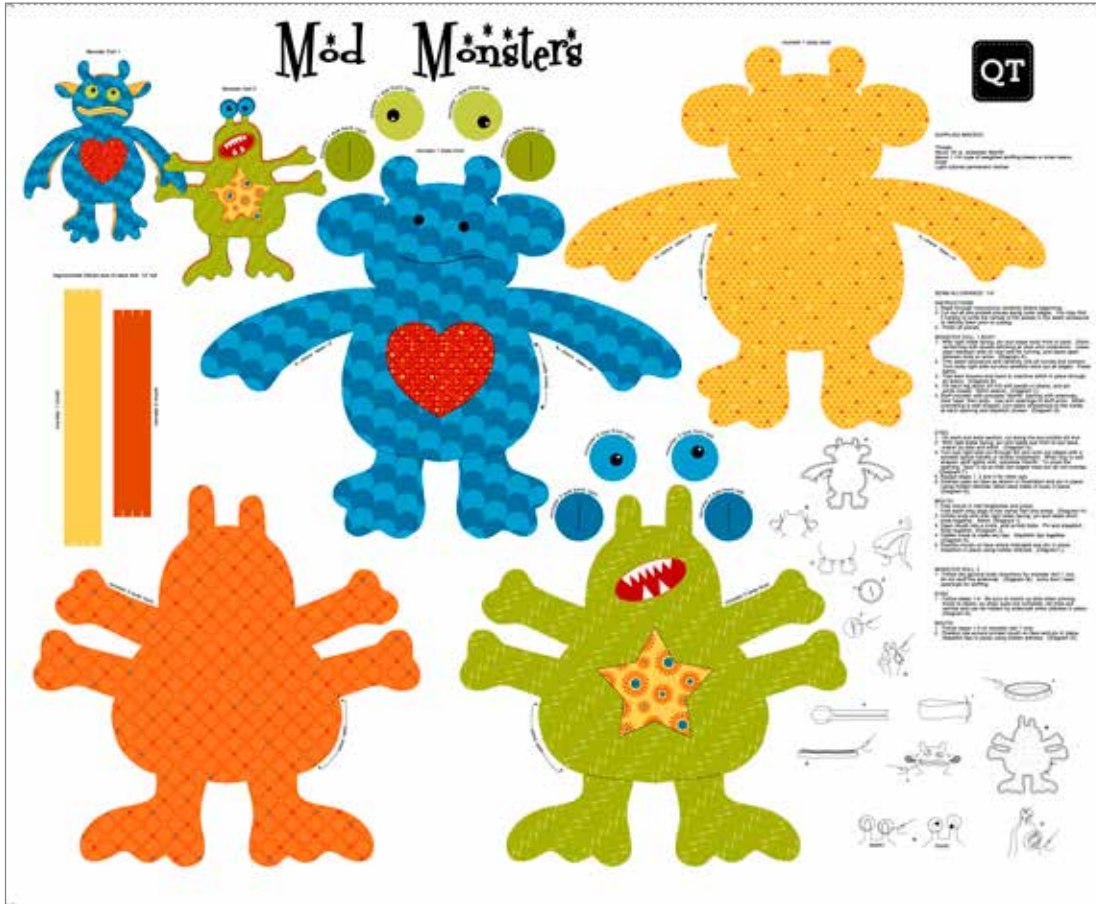
26387 X



26388 X



Orders in by October 1st will ship mid December



26389 X



# Color Blends II

## 23528

### In-Stock Fabrics

100% Cotton. 43/44"  
60 x 60. D/R approx. 12 yds.

**(34) - 2½" Strips**  
6 per pack  
**STRIPS CBII 6PACK**



**(34) Fat Quarters**  
3 bundles per pack  
**FATQUAR CBII 3 PACK**



KE (Dove)



JK (Pewter)



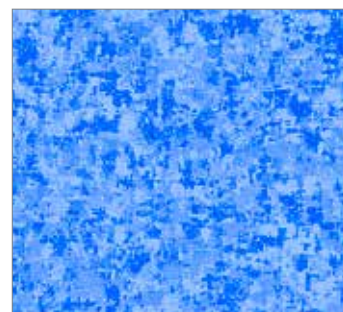
GQ (Jadeite)



HQ (Cyprus)



WX (Ice Blue)



WB (French Blue)



O (Vermillion)



RO (Tomato)



RD (Geranium)



MT (Brick)



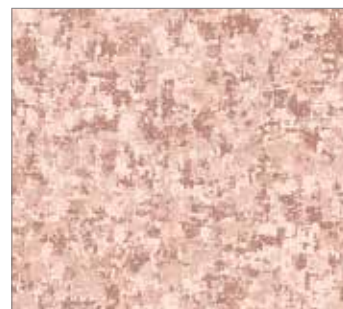
EZ (Oatmeal)



EK (Bisque)



ES (Parchment)



AD (Mocha)

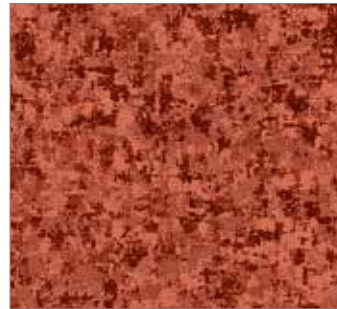
Available August 1<sup>st</sup>



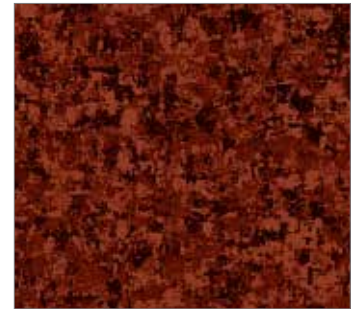
AX (Tobacco)



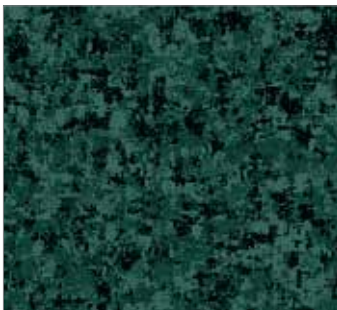
AT (Bark)



TC (Spice)



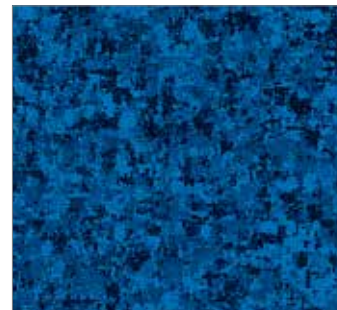
TA (Rust)



FQ (Fir)



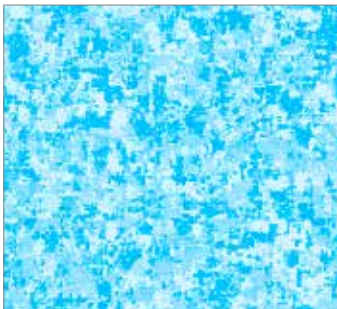
GJ (Juniper)



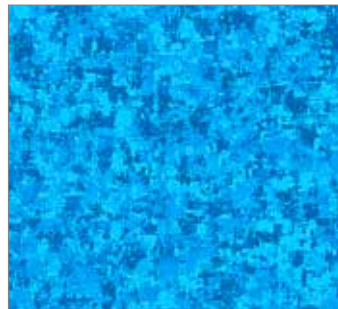
BY (Liberty Blue)



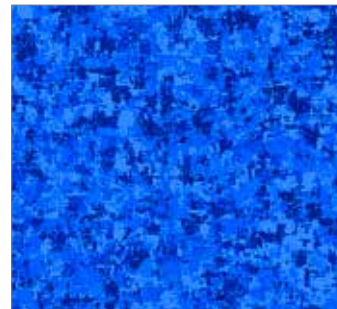
NW (Navy)



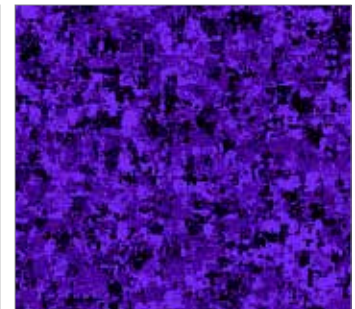
BX (Glacier Blue)



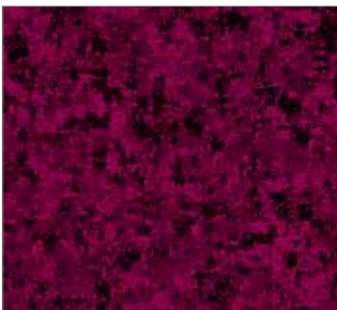
BQ (Cyan)



YW (Ultramarine)



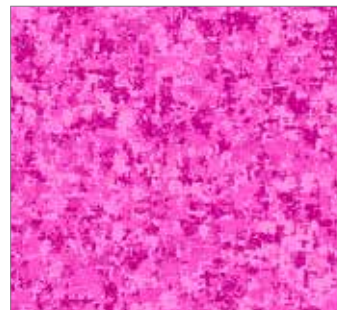
VK (African Violet)



VM (Mulberry)



DM (Raspberry)



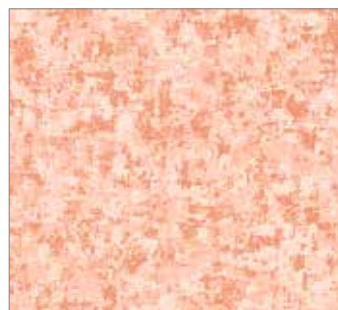
PL (Cyclamen)



SU (Gold Nugget)



AC (Acorn)



C (Cinnamon Sugar)



OZ (Apricot)



S (Butterscotch)

# Avalon

*Our newest 108" wide fabric is here with a decorative filigree print! Offered in 16 color options, there is surely a hue to enhance your next project!*



26312 G (Green) Decorative Filigree



26312 R (Red) Decorative Filigree



26312 H (Lime) Decorative Filigree



26312 T (Rust) Decorative Filigree



26312 Q (Turquoise) Decorative Filigree



26312 O (Orange) Decorative Filigree



26312 B (Blue) Decorative Filigree



26312 S (Gold) Decorative Filigree



26312 W (Midnight) Decorative Filigree



26312 E (Cream) Decorative Filigree



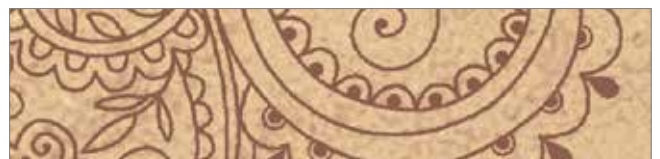
26312 V (Purple) Decorative Filigree



26312 A (Brown) Decorative Filigree



26312 P (Pink) Decorative Filigree



26312 AE (Tan) Decorative Filigree



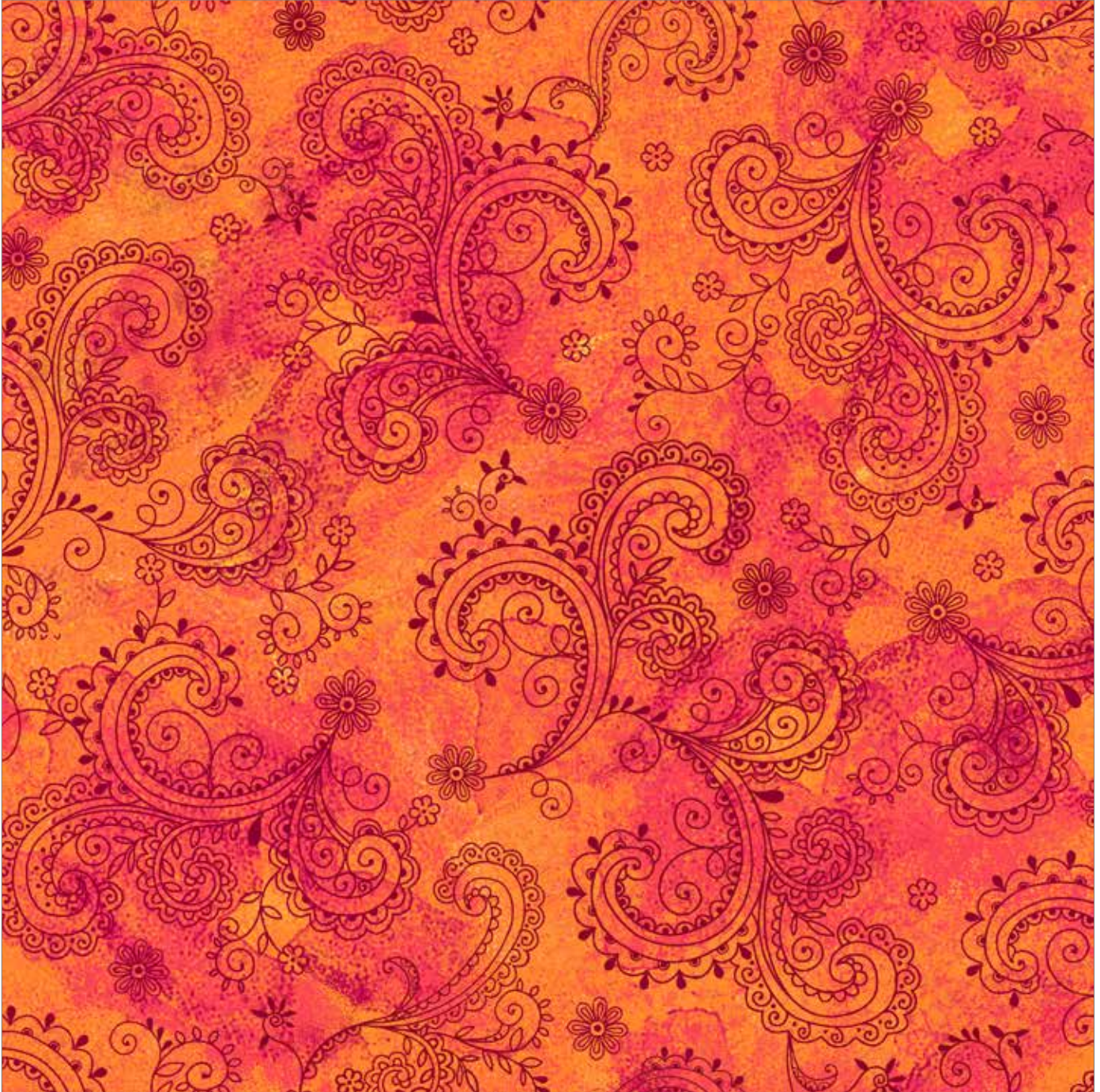
26312 Z (White) Decorative Filigree



26312 K (Gray) Decorative Filigree

Available August 1<sup>st</sup>

## 108" wide fabric



26312 O (Orange) Decorative Filigree, *Full repeat shown at 60% measures 12" x 12"*

# Projects

Free projects can be found at [QTfabrics.com/projects](http://QTfabrics.com/projects)  
We've created many exciting partnerships with pattern designers to bring you top quality inspiration using QT Fabrics.

## A Gardening We Grow



FS

10¼" x 9¼" x 4"

## All A Flutter



QT

48" x 21" | 64" x 79"

## Artworks: Cityscape



QT

56½" x 32½"

## Artworks: Tiger



QT

58½" x 65½"

## Artworks: Wolves



QT

50½" x 56½"



**Belle**



96" x 96" | 58" x 74½"

**Carnivale**



11" x 11½" x 4½"

**Carnivale**



44" x 44"

**Color Blends II**



77" x 77"

**Esme**



57½" x 67½"

**Farmall**



One Size Fits All | 14" x 18"

# Projects

Free projects can be found at [QTFabrics.com/projects](http://QTFabrics.com/projects)  
We've created many exciting partnerships with pattern designers to bring you top quality inspiration using QT Fabrics.

### Farmall



60" x 68"

### Fowl Play



67½" x 97½"

### Garden Grandeur



79" x 87"

### In Deep Ship



68" x 79"

### Jungle Buddies



60" x 60"

**Little Squirt**



FS

43" x 55"

**Little Squirt**



QT

61" x 78"

**Manor House**



FS

59" x 71"

**Moxie**



QT

63" x 84" | 63" x 77"

**Mustang Sunset**



FS

52" x 64"

**Mustang Sunset**



FS

10¼" x 9¼" x 4"

# Projects

Free projects can be found at [QTfabrics.com/projects](http://QTfabrics.com/projects)  
We've created many exciting partnerships with pattern designers to bring you top quality inspiration using QT Fabrics.

### Petit Pals



60½" x 74¾"

### Portofino



11" x 11½" x 4½"

### Portofino



92" x 108" | 60" x 76"

### Songs of Nature



75½" x 95½"

### Thalia



11" x 11½" x 4½"

### Thalia



54" x 54"

The Quilted Cottage



76" x 82"

The Quilted Cottage



53" x 64½"

Tranquility



60½" x 74¾"

Where the Wise Things Are



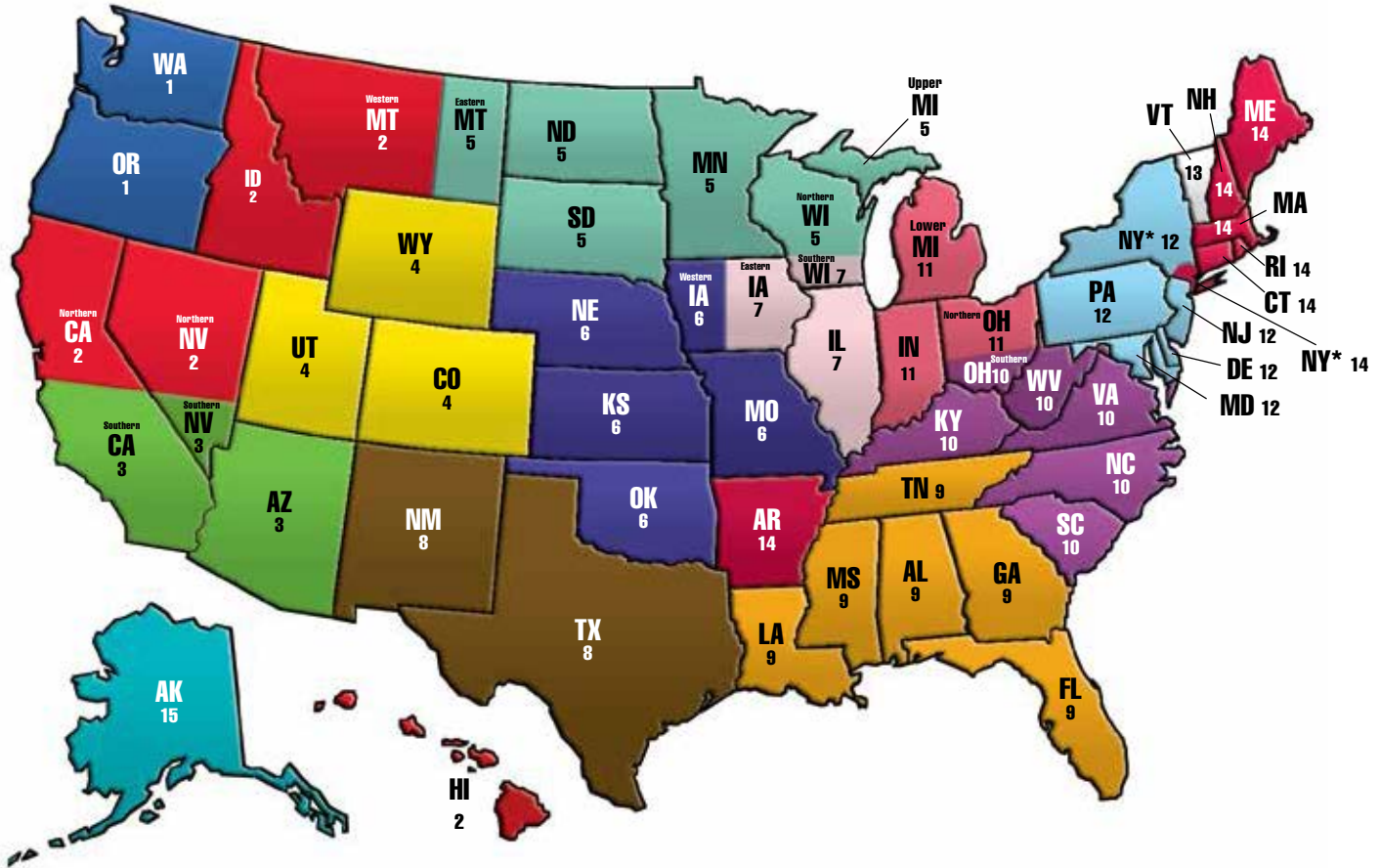
00" x 00"

Where the Wise Things Are



10¼" x 9¼" x 4"

# Regional Sales Managers



**OR, WA**

Regional Sales Manager  
**Martha Manning-Jurey**  
 Portland, OR  
 Cell: 904.226.8020  
 Fax: 800.540.7063  
 Email: mjurey@cpw.com



**Upper MI, MN, Eastern MT, ND, SD, Northern WI**

Regional Sales Manager  
**Kay Peterson**  
 Owatonna, MN  
 Cell: 507.475.2529  
 Fax: 800.540.7063  
 Email: kpeterson@cpw.com



**AL, FL, GA, LA, MS, TN**

Regional Sales Manager  
**Mike Flynn**  
 Atlanta, GA  
 Cell: 205.478.7679  
 Fax: 800.540.7063  
 Email: mflynn@cpw.com



**VT**

Regional Sales Manager  
**Ken Gamache**  
 Cranston, RI  
 Cell: 508.948.8119  
 Fax: 800.540.7063  
 Email: kgamache@cpw.com



**Northern CA, HI, ID, Western MT, Northern NV**

Regional Sales Manager  
**Ann Haley**  
 San Ramon, CA  
 Cell: 925.785.8117  
 Fax: 800.540.7063  
 Email: ahaley@cpw.com



**Western IA, KS, MO, OK, NE**

Regional Sales Manager  
**Coby J. McComas**  
 Lee's Summit, MO  
 Cell: 816.803.8195  
 Fax: 800.540.7063  
 Email: cmccomas@cpw.com



**DC, KY, NC, Southern OH, SC, VA, WV**

Customer Service  
 Cranston, RI  
 Office: 800.876.2756  
 Fax: 800.540.7063  
 Email: info@QTFabrics.com



**AR, CT, MA, ME, NH, NY\*, RI**

Sales Manager  
**Jesús Montero**  
 New York, NY  
 Cell: 347.968.4427  
 Fax: 800.540.7063  
 Email: jmontero@cpw.com

\*defined as south & east of Route 287



**AZ, Southern CA, Southern NV**

Regional Sales Manager  
**Barbara Wing**  
 Hawthorne, CA  
 Cell: 310.339.4515  
 Fax: 800.540.7063  
 Email: bwing@cpw.com



**Eastern IA, IL, Southern WI**

Regional Sales Manager  
**Sarah Maylath**  
 Plainfield, IL  
 Cell: 815.715.9914  
 Fax: 800.540.7063  
 Email: smaylath@cpw.com



**IN, Lower MI, Northern OH**

Regional Sales Manager  
**Jayne Clark**  
 Danville, IN  
 Cell: 317.509.1312  
 Fax: 800.540.7063  
 Email: jclark@cpw.com




**AK**

Independent Rep  
**Janai Comer**  
 Valdez, Alaska  
 Cell: 907.831.1055  
 Fax: 800.540.7063  
 Email: seisafe@cvinet.net




**CO, UT, WY**

Regional Sales Manager  
**Debra Coffman**  
 Denver, CO  
 Cell: 303.907.8624  
 Fax: 800.540.7063  
 Email: dcoffman@cpw.com



**NM, TX**

Regional Sales Manager  
**Tammie Randle**  
 Bedford, TX  
 Cell: 817.946.2975  
 Fax: 800.540.7063  
 Email: trandle@cpw.com



**DE, MD, NJ, NY\*, PA**

Regional Sales Manager  
**Kevin Driscoll**  
 Aberdeen, NJ  
 Cell: 732.310.0145  
 Fax: 800.540.7063  
 Email: kdriscoll@cpw.com

\* excluding south & east of Route 287



# Canadian & International Distributors



If you are a potential wholesale customer and do not see your country or region listed, please contact our International Sales Manager.

## EUROPE

**International Sales Manager, Europe**  
**Mode-Meter AG**  
PO Box 317  
Baselstrasse 22 B  
CH-4125  
Riehen/Basel  
Dieter Roesch  
Marie Roesch  
**Tel:** +41-61-643-0560  
**Mobile:** +49-171-731-2958  
**Fax:** +41-61-643-0561  
**Email:** Mode-Meter@mode-meter.ch

## AUSTRALIA

**XLN Fabrics**  
2/21 Binney Rd.  
Kings Park  
NSW 2148  
Australia  
**Tel:** +61-2-9621-3066  
**Fax:** +61-2-9622-3074  
**Email:** allanmurphy@xln.com.au

## BRAZIL

**Fernando Maluhy CIA Ltda**  
Rua Cav. Basilio Jafet, 38  
8.0 Andar Sala 804  
Sao Paulo, SP Brazil 0122020  
Mr. Fernando Maluhy  
**Tel:** +5511-3325-2015  
**Fax:** +5511-3325-2015  
**Email:** fernando@fernandomaluhy.com.br  
**Email:** fernandomaluhy@fernandomaluhy.com.br

## CANADA

**International Textiles Ltd.**  
8811 Beckwith Rd.  
Richmond, B.C.  
Canada V6X 1V4  
**Tel:** +604-270-7593  
**Fax:** +604-270-7598  
**Email:** intex.sales@shawbiz.ca

## CHILE

**Comercial Golf SpA**  
Independencia 369 local 13  
Independencia 8380000  
Santiago, Chile  
Ester Benquis  
**Tel:** +56-2-6966996  
**Email:** ebenquis@gmail.com

## COLOMBIA

**Bodega Decorativa, DECORModa**  
**Textiles**  
Carrera 81 No. 32-330  
Medellin, Antioquia  
Colombia  
**Tel:** +57-4-576-0570  
**Fax:** +57-4-250-7617  
www.decormoda.com.co  
**E-mail:** decormoda@decormoda.com.co  
**Contact:** Juan Daniel Orrego Pizano

## Arte y Manualidades

Calle 6A #47-79  
Cali, Colombia  
America Rivas  
**Tel:** +57-2-552-3957  
**Fax:** +57-2-405-4966  
**Email:** america362@yahoo.com

## Telas y Tonos

Calle 125 No 21a-39  
Bogota, Colombia  
Raphael Ochoa  
**Tel:** +57-1-215-1555  
**Email:** administracion125@telasytonos.com

## COSTA RICA

**El Costurero**  
1314-2150 San Jose  
Costa Rica  
Maria Teresa Arteaga  
Rocio Flaqué  
**Tel:** +506-2225-9534  
**Fax:** +506-2225-0526  
**Email:** elcosturero@racsa.co.cr

## CYPRUS

**K. Didonian Textiles**  
16 Constantinou  
Kava Fl Street P. code 30,76  
Limassol, Cyprus  
**Tel:** +357 25 331 739  
**Fax:** + 357 25 387 476  
**Email:** dingdong@cytanet.com.cy  
Mr. Richard Didonian

## CZECH REPUBLIC

**Cotton Kingdom**  
Patchwork & Quilting Fabrics Wholesale  
Svambovee 354  
760 01 Zlin  
Czech Republic  
**Tel:** +420 603235078  
**Email:** kos.libor@hotmail.com  
Mr. Libor Kos

## Siti Niti

Ochoz u Brna 624E  
66402  
Czech Republic  
**Email:** info@sitiniti.cz  
www.sitiniti.cz  
Eva Maresova

## ECUADOR

**El Costurero**  
Datiles y Primavera Local 15  
Centro Comercial Urdesa  
Guayaquil, Ecuador  
Sara De Gagliardo  
**Tel:** +5934-238-9616  
**Fax:** +5934-238-3985  
**Email:** elcosturero@gye.satnet.net

## FRANCE/BELGIUM

**PASCAL et BEATRIX**  
48 rue Gustave Eiffel  
ZA Albitech  
81000 Albi  
Mr Geoffrey Davi  
**Tel:** +33-05-63-45-22-44  
**Mobile:** +33-06-80-65-40-11  
**Fax:** +33-05-63-54-29-66  
**Email:** contact@pascaletbeatrice.com

## GERMANY & AUSTRIA

**Zweigart & Sawitzki**  
Fronackerstrasse 50  
D-71063 Sindelfingen  
Germany  
Mrs. Klotz  
Mr. Michael Georgij  
**Tel:** +49-70-31-795414  
**Fax:** +49-70-31-795476  
**Email:** fbaudouin@zweigart.de

## GUATEMALA

**Casa Decora & CIA Ltda**  
Primera calle 18-83  
Zona 15  
Local 23 Vista Hermosa II  
Guatemala, Guatemala  
Miriam De Palacios  
**Tel:** +502-2369-6477

## ITALY

**HFT SRL**  
Viale Piave 60  
24022 Alzano Lombardo (BG)  
Italy  
Tamara Morzenti  
**Tel:** +39 035 512 450  
**Fax:** +39 035 515 466  
**Web:** www.hft.it

## JAPAN

**Kiyohara & Co., Ltd.**  
5-2 Minamikyuhoji  
4-Chome, Chuo-Ku  
Osaka, Japan  
Kaz Fujii  
**Tel:** +8166-252-4764  
**Fax:** +8166-252-4377  
**Email:** kazuo.fujii@kiyohara.co.jp

**Lecien Corporation**  
7F Yotsubashi Grand Square,  
1-28-3 Shinmachi,  
Nishi-ku Osaka 550-0013  
Mr. Fuminori Ito  
**Tel:** +06-4390-5526  
**Fax:** +06-4390-5516

## MEXICO

**Grupo Parisina**  
Venustiano Carranza No. 77  
Col. Centro  
Mexico City, Mexico 06060  
Juan Jose Sierra Requejo  
**Tel:** +525-55512-2353  
**Fax:** +525-55521-2145

## NETHERLANDS

**Rinske Stevens Design B.V.**  
Costerweg 4C  
4104 AJ CULEMBORG  
Netherlands  
**Tel:** +31-345788-999  
**Fax:** +31-847360-013  
**Email:** info@rinskestevensdesign.com

## NEW ZEALAND

**Tiffanies Treasures**  
PO Box 300-194  
Albany, Auckland  
New Zealand  
Mr. Pawan Kalsi  
**Tel:** +64-9-477-0155  
**Fax:** +64-9-476-7240  
**Email:** info@tiffaniestreasures.co.nz

## PUERTO RICO

**Cabrera Marketing Co.**  
#95 Calle La Cambia Ste. 7  
Bayamon, P.R. 00961  
**Tel:** +787-787-7890 or 778-7875  
**Fax:** +787-269-6982  
Noel Cabrera  
**Email:** cabreramarkpr@gmail.com

## J. Pica & Co, Inc(Tiendas Capri)

Calle A. Esq. Escorial  
Urb. Industrial Mario Julia  
Puerto Nuevo, PR 00920  
Jose Acosta  
**Tel:** +787-793-7575  
**Fax:** +787-793-0668  
**Email:** jacosta@jpica.com

## RUSSIA

**Gela LTD**  
141400, Vladenije 13B  
Vashutinskoje shosse  
Chimki, Moscow area  
Russia  
Anton Shcherbakov  
**Tel:** +74 95 742 50 43  
**Fax:** +74 95 742 80 70  
**Web:** www.gela.ru  
**Email:** anton@gela.ru

## SAUDI ARABIA

**Al Zamil Stores**  
PO Box 217  
Al Khobar 31952, Saudi Arabia  
**Tel:** + 966 3 864 1919  
**Fax:** + 966 3 864 9190  
**Email:** Zamix@sahara.com.sa  
Mr. Azuver Saleem

## SCANDINAVIA

**Adlico Textile Aps.**  
Merkurvej 2  
7430 Ikast  
Denmark  
Mr. Thomas Eriksen  
Mr. Jon Christensen  
**Tel:** + 45 978 625 25  
**Fax:** + 45 978 625 24  
**Mobile:** + 45 299 261 08  
**Handy:** + 49 151 616 048 71  
**Email:** jon@adlico.dk  
**Web:** http://www.adlico.dk

## SINGAPORE

**Sing Mui Heng (PTE) Ltd**  
315 Outram Road #05-09 Tan Boon Liat  
Building  
Singapore 169074  
**Tel:** +65-6221-9209  
**Fax:** +65-6223-4884  
Sim Piah Hui  
**Email:** mgt@singmuiheng.com

## SLOVAKIA

**Daša Kozmárová - Bubulákovo**  
Lužná 2320/6  
Šal'a 927 05  
www.bubulakovo.sk  
www.bubulakovo.cz  
www.bubulakovo.hu

## SPAIN/PORTUGAL

**ALBA Patchwork S.L.**  
C. Orient, 12  
E-43204 Reus  
Tarragona, Spain  
Sra. Victoria Alba  
**Tel:** +34-977-77-20-21  
**Fax:** +34-977-77-20-21  
**Email:** albapatch@albapatch.com

## SWITZERLAND

**Mode-Meter AG**  
PO Box 317  
Baselstrasse 22 B  
CH-4125  
Riehen/Basel  
Dieter Roesch  
**Tel:** +41-61-643-0560  
**Mobile:** +49-171-731-2958  
**Fax:** +41-61-643-0561  
**Email:** Mode-Meter@mode-meter.ch



**Cotton & Color**  
Inzlingerstrasse 279  
CH4125 Riehen  
Astrid Oberhauser  
**Tel:** +41-61-641-9770  
**Email:** info@cotton&color.com

**J. GASSER & CO. AG**  
Industriestrasse 4  
CH - 4658 Däniken  
Toni Peier  
**Tel:** +41 62 288 90 82  
**Fax:** +41 62 288 90 85  
**Web:** http://www.gasser-daniken.ch

## TAIWAN

**Taiwan Cheer Champ Co., Ltd**  
11th Fl., Universal Center No. 175, Sec. 1  
Tatung Rd.,  
Hsi Chih, New Taipei City 221,  
Taiwan(R.O.C)  
Joyce Yen  
**Tel:** +886-2-26498555#372  
**Fax:** +886-2-26498897  
**Email:** joyce@cces.com.tw

**Wood & Cloth**  
93 Nantien St.  
Kaoshiung City, Taiwan  
R.O.C.  
Elaine Liu  
**Tel:** +886-7-3303718  
**Fax:** +886-7-5317916  
**Email:** woodandcloth@gmail.com

## UNITED KINGDOM & IRELAND

**Behrens Fabrics**  
Centrepoint  
Marshall Stevens Way  
Trafford Park  
Manchester  
M17 1PP  
Mr. Duncan Hough  
**Tel:** +44-161-872-1444  
**Fax:** +44-161-872-8002  
**Mob:** 07808 786 060  
**Email:** dthough@behrens.co.uk

## VENEZUELA

**Importadora Cristelia**  
Av. Cuyuni Qta. Alegria  
Colina De Bello Monte  
Caracas, Venezuela  
Jose Gomez & Ofelia Gomez  
**Tel:** +58212-753-1585  
**Fax:** +58212-753-7130  
**Email:** berdun@hotmail.com

