



# FLY



SPRING / SUMMER 2021

Prints  
& Clothes

**KATIA**  
FABRICS

**Katia**  
100% You





SPRING / SUMMER 2021

FLY is a collection inspired by the concept of FLYING. To fly in the literal sense, but also in a more abstract manner: to let your imagination fly. FLY encourages us to never stop believing, dreaming and playing without limits.


With the help of our little ones, we can imagine a world where animals live together happily without having to face the threat of extinction. Now, more than ever, we can share and learn the experience of becoming kids again in the company of our small children. Let your imagination run free with FLY.

The SS21 collection includes fabrics that are lightweight, breathable and cool. As a result, girls and boys are going to feel comfortable and totally at ease to play and imagine without limits. We present a mix of new articles along with our basic items. These include unique print designs created exclusively for Katia Fabrics by renowned artists and illustrators. Prints that transform fabrics into stunning designs so you can sew anything you desire including unique clothing for your kids.

## Spring / Summer collection

Jungle Heroes	Panama Stripes
Contemporary Birds	Slub Jersey
Earth & Dreams	Sweat Towel
Wild & Free	Plumeti Bicolor
Aladdin	Vichy
Flying Kangaroos	Jersey Solid Color
Fly & Swim with me	Bambula
Jumbo	Denim Basic
Just hanging out	Canvas Ecrú
Tulum Mexico	Canvas
Healthy Fly	Canvas Gold
Salinas Birds	Canvas Slim
Dreamcatcher	Canvas Slim Panel
Magic is in the air	Canvas Slim Waterproof
Ice Cream World	Bags & Accesories
Seals Balloon	Canvas Home
Hands & Feet	Eat & Sew
Fly with me	Fiber Fill
Play & Fly	New AW20/21 Articles
Into the River	Rustic Cotton
Hippos Diving	Rustic Cotton Solid
Translucent	Padded Metallized
Plumeti Vintage	Padded Silver Print
Sari Gold	Poplin Antibacterian Solid
Sari Fluor	Poplin A. Mask Panels



2051   b NEW <b>Bambula</b> 100% Cotton 105 gr./mt2 130 cm wide 10 mts	2004   c <b>Canvas</b> 100% Cotton 215 gr./mt2 145-150 cm wide 8 mts	2058   ce NEW <b>Canvas Eeru</b> 100% Organic Cotton 260 gr./mt2 145-150 cm wide 8 mts	2005   cg <b>Canvas Gold</b> 100% Cotton 215 gr./mt2 145-150 cm wide 8 mts	2011   cn <b>Canvas Natur</b> 100% Cotton 215 gr./mt2 145-150 cm wide 8 mts	2043   cs NEW <b>Canvas Slim</b> 100% Cotton 200 gr./mt2 8 mts 140 cm wide	2043   csn NEW <b>Canvas Slim Natur</b> 100% Cotton 200 gr./mt2 8 mts 140 cm wide	2032   csn NEW <b>Canvas Slim Panel</b> 100% Cotton 200 gr./mt2 140 cm wide Special sizes
2033   csw NEW <b>Canvas Slim Waterproof</b> 100% Cotton 200 gr./mt2- with PVC resin 140 cm wide - 8 mts	2034   cswp NEW <b>Canvas Slim Waterproof Panel</b> 100% Cotton 200 gr./mt2 with PVC resin 140 cm wide - Special sizes	2010   d <b>Denim</b> 100% Cotton 125 gr./mt2 145-150 cm wide 8 mts ★	2025   db NEW <b>Denim Basic</b> 100% Cotton 125 gr./mt2 145-150 cm wide 10 mts ★	7819   es <b>Eat &amp; Sew</b> 100% EVA - «BPA free» Thickness: 0.1 mm 120 cm wide 8 mts ★	7807   ff <b>Fiber Fill</b> Net weight: 500g 100% Polyester-silicone hollow fiber. ★	2102   j <b>Jersey</b> 95% cotton + 5% Elastan 210gr/mt2 145-150 cm wide 8 mts	2103   jm <b>Jersey Melange</b> 50% cotton + 45% PES + 5% Elastan 210gr/mt2 145-150 cm wide - 8 mts
2114   jp <b>Jersey Panel</b> 95% cotton + 5% Elastan 210gr/mt2 145-150 cm wide Special sizes	2117   js <b>Jersey Solid Color</b> 95% cotton + 5% Elastan 210gr/mt2 145-150 cm wide 10 mts	2115   m <b>Mousseline</b> 100% cotton 125gr/mt2 145-150 cm wide 8 mts	2119   mg <b>Mousseline Gold</b> 100% cotton 125gr/mt2 145-150 cm wide 8 mts	2159   pmt NEW <b>Padded Metallized</b> 100% Polyester 245-250 gr./mt2 130 cm wide 10 mts	2160   pmp NEW <b>Padded Silver Print</b> 100% Polyester 190 gr./mt2 140 cm wide 8 mts ★	2039   pm NEW <b>Panama Stripes</b> 83% cotton + 17% Viscose 105/110 gr./mt2 145-150 cm wide - 8 mts	2126   pb <b>Plumetti Bicolor</b> 80% cotton + 20% Polyester 70/75gr/mt2 145-150 cm wide - 8 mts
2052   pwv NEW <b>Plumeti Vintage White</b> 100% cotton 80gr/mt2 145-150 cm wide 10 mts	2052   pvp NEW <b>Plumeti Vintage Print</b> 100% cotton 80gr/mt2 145-150 cm wide 8 mts	2101   p <b>Poplin</b> 100% cotton 120gr/mt2 145-150 cm wide 8 mts	2055   pa NEW <b>Poplin Antibacterial Mask Panels</b> 100% Cotton Biocide & C6 Waterproof 145-150 cm wide Special Sizes	2055   pas NEW <b>Poplin Antibacterial Solid Color</b> 100% Cotton 115 gr./mt2 ADRATEX RH antibacterial and ADRATEX S-WR-C waterproof treatments 145-150 cm wide - 10 mts	2055   pa NEW <b>Poplin Antibacterial White</b> 100% Cotton Biocide & C6 Waterproof 145-150 cm wide - 10 mts	2057   prwv NEW <b>Poplin Mercerized</b> 100% Mercerized Cotton 115 gr./mt2 145-150 cm wide 10 mts	2056   rc NEW <b>Rustic Cotton</b> 100% Cotton 150/155 gr./mt2 130-135 cm wide 8 mts ★
2056   rcs NEW <b>Rustic Cotton Solid</b> 100% Cotton 150/155 gr./mt2 130-135 cm wide 10 mts ★	2038   saf NEW <b>Sari Fluor</b> 97% Cotton +3% Polyester 110/115 gr./mt2 145-150 cm wide - 8 mts	2037   sag NEW <b>Sari Gold</b> 99% Cotton +1% Lamé-Lurex 110/115 gr./mt2 145-150 cm wide - 8 mts	2035   sj NEW <b>Slub Jersey</b> 86% Cotton +14% Polyester 110/115 gr./mt2 180 cm wide - 8 mts	2036   st NEW <b>Sweat Towel</b> 82% Cotton +18% Polyester 200 gr./mt2 145-150 cm wide - 8 mts	2008   ss <b>Summer Sweat</b> 95% Cotton + 5% Elastan 220 gr./mt2 145-150 cm wide 8 mts	2009   ssm <b>Summer Sweat Melange</b> 70% Cotton + 22% PES +8% Elastan 220 gr./mt2 145-150 cm wide - 8 mts	2008   ssp NEW <b>Summer Sweat Panel</b> 95% Cotton +5% Elastan 220 gr./mt2 145-150 cm wide Special sizes
2030   t NEW <b>Translucent</b> 100% TPU 0,15 mm 145-150 cm wide 8 mts	2016   v <b>Vichy</b> 65% Cotton + 35% Polyester 145 gr./mt2 145-150 cm wide - 8 mts	 <p><b>OEKO-TEX®</b> CONFIDENCE IN TEXTILES <b>STANDARD 100</b> 20180K0955 AITEX</p> <p>Tested for harmful substances. www.oeko-tex.com/standard100</p> <p>* No Oeko-tex</p>					

## KATIA FABRICS



FRONT COVER



BACK COVER

### 33 Sewing Patterns Magazine

Baby, Little, Kids, Baby & Kids

Accessories



Fabrics

Rotary & Digital print



# Jungle Heroes

KATIA FABRICS



j55 Jungle heroes



m7 Cactus Mousseline



p104 Jungle Heroes



pm3 Black



js2



js11 & pas11



pp14 Flying heroes pillow panel (80x150 cm)

This panel measures 80 cm in height and consists of 10 panels, therefore measuring a total of 8 m.



ppt1 Flying heroes bowling panel (80x150 cm)

This panel measures 80 cm in height and consists of 10 panels, therefore measuring a total of 8 m.

Fluttering capes belonging to jungle super heroes are featured on the fabrics in this collection. Tigers, giraffes, koalas and crocodiles in bright, tropical colours encourage us to reflect about the importance of our relationship with nature. Moreover, how the survival of these species can be assured and not compromised by human activity.



FLY

JUNGLE  
HEROES



KATIAFABRICS

28



116 - 152 cm

m7| Cactus Mousseline

7



62 - 80 cm

p104| Jungle Heroes

8



62 - 80 cm

pm3| Panama Stripes  
Black



5



62 - 80 cm

j55| Jungle Heroes

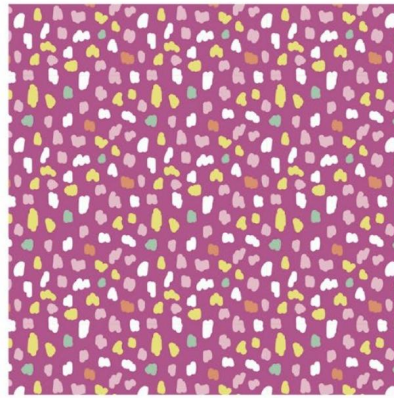
**katia**



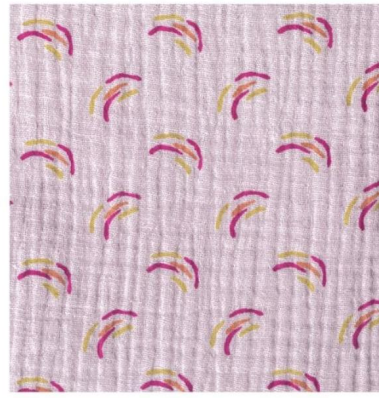
# Contemporary Birds



j46 Contemporary Birds



ss15 Contemporary Birds Coord



m11 Contemporary Birds Mousseline



SJ2 Stripes Hazelnut



ST2 Stripes Hazelnut



v3 Pink

Majestic birds proudly parade sophisticated plumage that decorates these fabrics in shades of pink, yellow, orange and violet. This collection also features towelling fabric and striped, slub knit jersey fabric. Both are ideal for combining with the animal print fabrics.



FLY

CONTEMPORARY BIRDS



31



116 - 128 cm

j46| Contemporary Birds

32



116 - 128 cm

ss15| Contemporary Birds Coord.



KATIA FABRICS

12



86 - 104 cm

sj2| Slub Jersey Hazelnut

24



86 - 104 cm

st2| Sweat Towel Stripes Hazelnut

26



106 - 152 cm

sj2| Slub Jersey Hazelnut



24



86 - 104 cm

m11| Contemporary Birds Mousseline



# Earth & Dreams

KATIAFABRICS



p91 Earth & Dreams



p92 Monkey Dreams



pm1 Green



jp7 Earth & Dreams T-Shirt (82x150 cm)

This panel measures 82 cm in height and consists of 10 panels, therefore measuring a total of 8.2 m.



js17

Did you know that 70% of the animal and plant species on Earth live in tropical forests? With *Earth & Dreams* we dream about leafy forests where animals like tigers, antelopes and baboons are not in danger of extinction. Furthermore, they live in harmony with humans in an environmentally rich and diverse ecosystem.



FLY

EARTH & DREAMS



6



62 - 80 cm

p92| Monkey Dreams

8



62 - 80 cm

js17| Jersey Solid Color

31



116 - 128 cm

jp7| Earth & Dreams T-Shirt

32



116 - 128 cm

p91| Earth & Dreams



FLY

ICE CREAM WORLD

6



62 - 80 cm

pm1| Panama Stripes Green

8



62 - 80 cm

js4| Jersey Solid Color



20



62 - 80 cm

ss13| Ice Cream World

**katia**



# Wild & Free

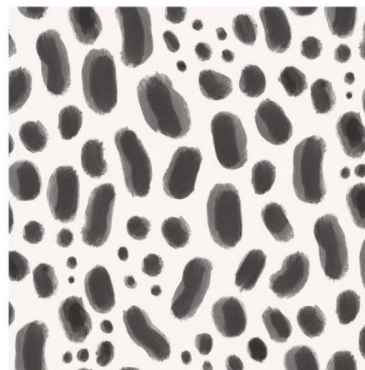
KATIA FABRICS



j44 Leopard Main



T1 Leopard Main Translucent



ss11 Leopard dots



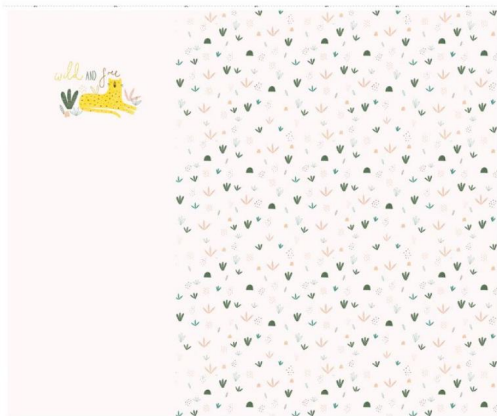
pvp2 Leopard Leaves



js14 & pas14 js15 & pas15



js9 & pas9



ssp1 Wild & Free Sweat (125x150 cm)

This panel measures 125 cm in height and consists of 7 panels, therefore measuring a total of 8,75 m.

Dreams carry us away to a distant jungle where leopards (together with other wild animals) live in freedom. *Wild & Free* pays homage to the leopard, a wild animal that reminds us of our own kids' spirit. The leopard's magnificent fur pattern is the protagonist of the print designs in this collection; a classic print with a modern appearance thanks to patches drawn with pictorial strokes in delicate colours.



FLY

WILD & FREE

20



86 - 104 cm  
ssp1| Wild & Free  
Summer Sweat Panel



28



116 - 152 cm  
pvp2| Leopard Leaves



KATIA FABRICS

14



62 - 80 cm

j44| Leopard Main +  
pas9| Poplin A. Solid +  
pas14| Poplin A. Solid +  
pas15| Poplin A. Solid +  
pa1| Poplin A. White

5



62 - 80 cm

j44| Leopard Main

30



116 - 152 cm

t1| Leopard Main  
Translucent



18



86 - 104 cm

so11| Leopard dote +  
js14| Jersey Solid Color

**katia**



# Aladdin

KATIA FABRICS



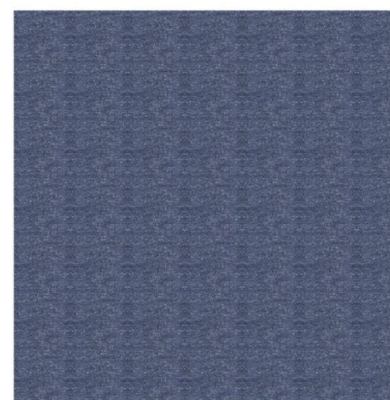
j47 Aladdin Main



p105 Aladdin Flowers



d11 Aladdin Flowers



db1 Denim Basic



pm2 Orange

This collection has us flying off to the East on *Aladdin's* magic carpet. Furthermore, the tones in this collection transport us to this rich land of contrasts with a unique landscape.





FLY

ALADDIN

12



116 - 128 cm

pm2| Panama Stripes  
Orange

13



116 - 128 cm

pm2| Panama Stripes  
Orange

27



116 - 128 cm

pm2| Panama Stripes  
Orange

12



KATIAFABRICS

15



86 - 104 cm

p105| Aladdin Flowers

3



62 - 80 cm

j47| Aladdin Main

4



62 - 80 cm

js15| Jersey Solid Color

1



62 - 80 cm

d11| Aladdin Flowers +

4



62 - 80 cm

db1| Denim Basic

10



62 - 80 cm

d11| Aladdin Flowers +  
db1| Denim Basic

**katia**



# Flying Kangaroos



p93 Flying Kangaroos



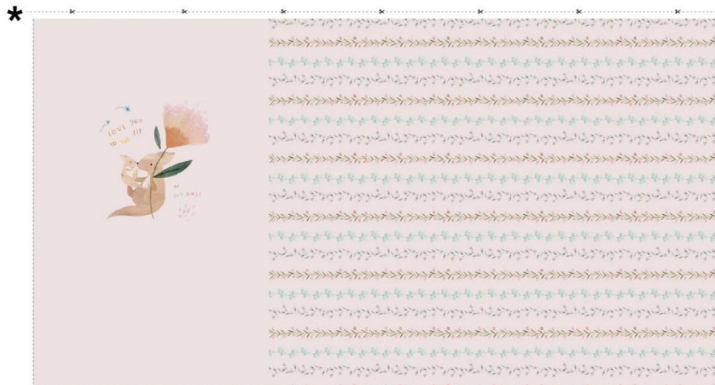
p94 Flying Kangaroos flowers



pvp1 Flying Platypus



js3& pas3



JP8 Flying Kangaroo Dress & T-Shirt Panel (82x150 cm)

This panel measures 82 cm in height and consists of 10 panels, therefore measuring a total of 8.2 m.

Kangaroos, koalas and platypuses (unfortunately an endangered species) maximise the spectacular vegetation of far away Australia to soar through the skies in gentle flight. *Flying Kangaroos* is a delicate collection featuring colours in powdery tones.



FLY

FLYING KANGAROOS



14



86 - 104 cm

p93| Flying Kangaroos + pas3| Poplin A. Solid + pas9| Poplin A. Solid + pas15| Poplin A. Solid + pa1| Poplin A. White

19



86 - 104 cm

pvp1| Flying Platypus

14



KATIAFABRICS

14



86 - 104 cm

p94| Flying K. Flowers + pas3| Poplin A. Solid + pas9| Poplin A. Solid + pas14| Poplin A. Solid + pa1| Poplin A. White

1



62 - 80 cm

p93| Flying Kangaroos

4



62 - 80 cm

pas3| Poplin A. Solid

10



62 - 80 cm

p94| Flying K. Flowers + pas3| Poplin A. Solid

3



62 - 80 cm

jp8| Flying Kangaroo Dress Panel

9



62 - 80 cm

p94| Flying K. Flowers

**katia**

15



# Fly & Swim with me



j48 Swim Rhinos



t2 Swim Rhinos Translucent



p95 Sky Cloud Rhinos



m8 Rhinos Mousseline



j26 Seagull Sand



st1 Stripes Aqua



sj1 Stripes Aqua



js4 & pas4



js14 & pas14



sspb1 Sky Rhinos Baby Panel (65,5 x 150 cm)

This panel measures 65,5 cm in height and consists of 12 panels, therefore measuring a total of 7,8 m.



jp9 Sky Rhinos Baby Panel (82x150 cm)

This panel measures 82 cm in height and consists of 10 panels, therefore measuring a total of 8.2 m.

We let our imaginations fly so we can imagine ourselves splashing around in the sky. We swim between fluffy clouds and beautiful rainbows, accompanied by rhinoceroses.

*Sky Rhinos* features soft tones of blue that exude an abundance of sweetness.





FLY

FLY & SWIM WITH ME



7  
62 - 80 cm  
jp9| Sky Rhinos Baby Panel



8  
62 - 80 cm  
jp9| Sky Rhinos Baby Panel



33  
86 - 104 cm  
t2| Swim Rhinos Translucent



KATIA FABRICS

14



86 - 104 cm

p95| Sky Cloud Rhinos+  
pa1| Poplin A. White +  
pas4| Poplin A. Solid +  
pas14| Poplin A. Solid

9



62 - 80 cm

j48| Swim Rhinos

10



62 - 80 cm

p95| Sky Cloud Rhinos+  
pas4| Poplin A. Solid

12



62 - 80

st1| Sweat Towel Stripes Aqua

3



62 - 80 cm

st1| Sweat Towel S. Aqua

9



62 - 80 cm

m8| Rhinos Moussetine

11



86 - 104 cm

p95| Sky Cloud Rhinos+  
js4| Jersey Solid Color



# Jumbo

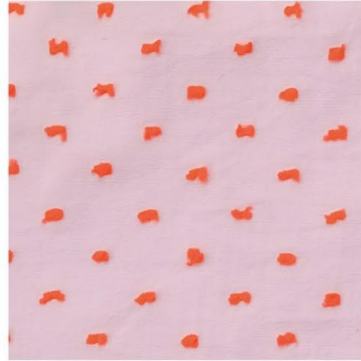
KATIAFABRICS



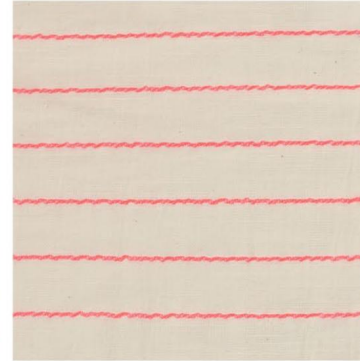
j49 Jumbo Main



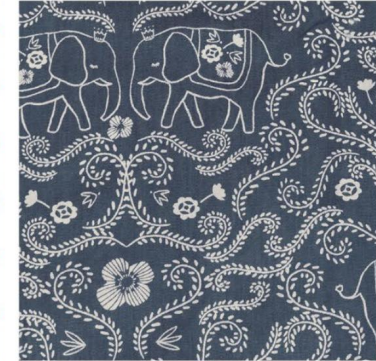
p96 Jumbo Flowers



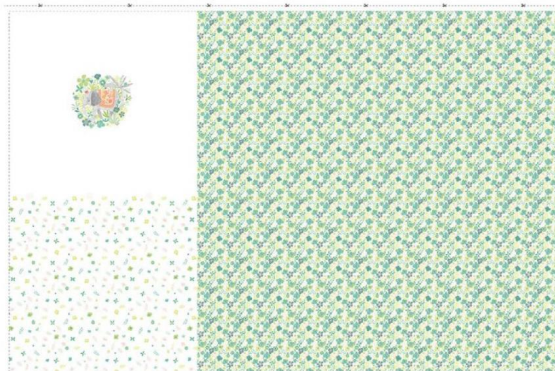
pb3 Pink Coral



saf1 Sari Fluor



d12 Jumbo Denim



jp12 Jumbo Dress Panel (100x150 cm)

This panel measures 100 cm in height and consists of 8 panels, therefore measuring a total of 8 m.



db1 Denim Basic

Our inspiration here is the endearing little *Dumbo*, the elephant that could fly thanks to his enormous ears. On this occasion he changes to *Jumbo*, because the elephants that come alive in these prints can fly as fast as an authentic airplane! *Jumbo* is a collection full of detail where the brightly coloured (corals, pinks, yellows, fluorescent greens) kaleidoscopic prints stand out above all.



FLY

JUMBO

29



116 - 152 cm  
st3| Stripes Green Fluor



28



116 - 152 cm  
sj3| Stripes Green Fluor



15



86 - 104 cm  
d12| Jumbo Denim

18

KATIAFABRICS



25



86 - 104 cm  
jp.12| Jumbo Dress Panel

**katia**

19



FLY

JUMBO



1



62 - 80 cm

pb3| Pink Coral

4



62 - 80 cm

pb3| Pink Coral

2



62 - 80 cm

j49| Jumbo Main



KATIAFABRICS

13



86 - 104 cm

saf1| Sari Fluor

16



86 - 104 cm

saf1| Sari Fluor

17



86 - 104 cm

p96| Jumbo Flowers

**katia**





# Just hanging out



p97 Just hanging out



ssm3 Just hanging out melange



pm3 Black

Orangutans and chimpanzees climb happily, flying from tree to tree. These jumping animals are combined with imagery of natural elements to create a sophisticated collection. Tropical colours (line green, moss, mustard yellow) add vivacity to the fabrics.



FLY

JUST HANGIN OUT

7



62 - 80 cm  
pm3| Panama Stripes Black

8



62 - 80 cm  
pm3| Panama Stripes Black

22



KATIA FABRICS

29



116 - 152 cm  
ssm3| Just Hanging Out  
Melange



6



62 - 80 cm  
p97| Just Hangin Out

**katia**

23





# Tulum México

KATIAFABRICS



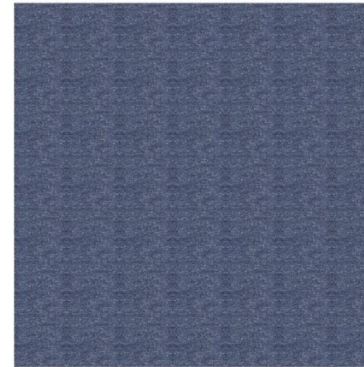
P98 Tulum Fruits



P99 Tulum Trees



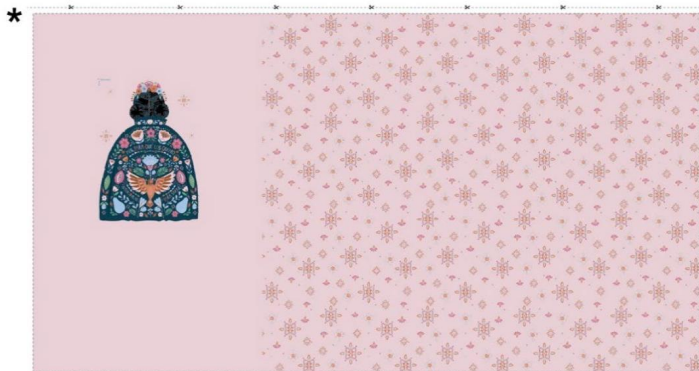
D13 Tulum Denim



db1 Denim Basic



pas16



JP11 Tulum Fiesta Time T-Shirt (82 x 150 cm)

This panel measures 82 cm in height and consists of 10 panels, therefore measuring a total of 8.2 m.

*“Feet, what do I need them for, if I have wings to fly”*. The phrase made famous by the artist Frida Kahlo, her popular art and the Mexican iconography portrayed in her work have all inspired *Tulum México*. The intense colours (pink, orange and emerald green) found in Frida Khalo’s work predominate in this collection.

FLY

TULUM  
MEXICO



14



86 - 104 cm

p98| Tulum Fruits +  
pas16| Poplin A. Solid +  
pas12| Poplin A. Solid +  
pas9| Poplin A. Solid +  
pa1| Poplin A. White

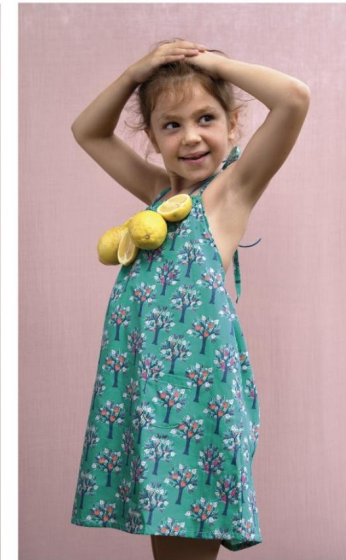
15



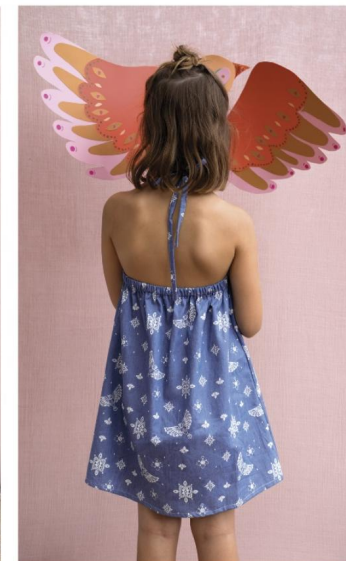
86 - 104 cm

p98| Tulum Fruits

24



KATIAFABRICS



27



116 - 128 cm

p99| Tulum Trees  
d13| Tulum Denim

**katia**

25





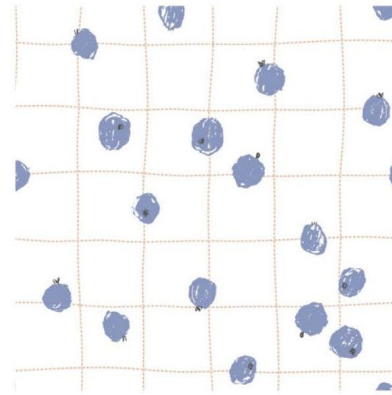
# Healthy Fly



p100 Healthy Fly



j45 Healthy bananas



p101 Healthy mirtilos



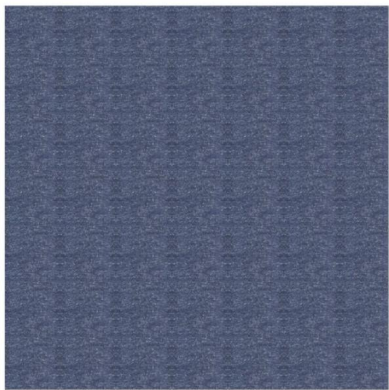
d14 Healthy Fly squares denim



js12 & pas12



js13 & pas13



db1 Denim Basic

*Healthy Fly* features prints with doodles of charming, happy flying fruit. The apples, blueberries, bananas, strawberries and grapes are flying thanks to the momentum of a paraglider or balloons in the same shapes as the fruit. Let's fly propelled by the fruit's energy!

FLY

HEALTHY FLY



6



62 - 80 cm  
d14| Healthy Fly  
Squares Denim

8



62 - 80 cm  
b1| Bambula

3



62 - 80 cm  
j45| Healthy Bananas

4



62 - 80 cm  
js13| Jersey Solid Color



KATIA FABRICS

14



116 - 128 cm

p100| Healthy Fly +  
pas12| Poplin A. Solid +  
pas13| Poplin A. Solid +  
pas15| Poplin A. Solid +  
pa1| Poplin A. White

31



116 - 128 cm

js15| Jersey Solid Color

32



116 - 128 cm

p100| Healthy Fly

16



86 - 104 cm

p101| Healthy Mirtilos

17



86 - 104 cm

pas13| Poplin A. Solid

Katia





# Salinas Birds

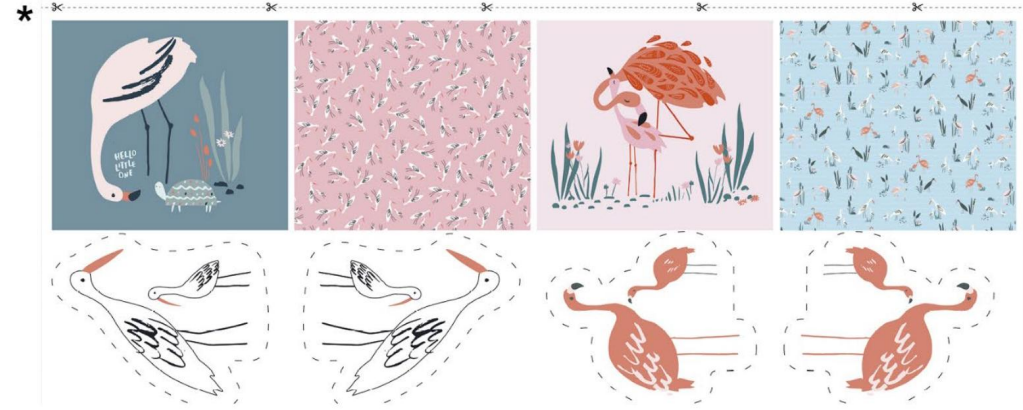
KATIAFABRICS



p88 Salinas Birds blue

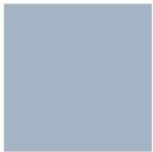


p89 Salinas Rushes



pp11 Salinas Pillow Panel (64x150 cm)

This panel measures 64 cm in height and consists of 13 panels, therefore measuring a total of 8.3 m.



js1



js2



js4 & pas4

Slender, impressive flamingos look out over the vast shallow waters of the salt marshes. The Salinas Birds fabrics feature still waters where these splendid creatures live happily, surrounded by reeds and wild feathery grass.

FLY

SALINAS



27



116 - 128 cm

p88 Salinas Birde Blue

31



116 - 128 cm

js2| Jersey Solid Color

32



116 - 128 cm

p89| Salinas Rushes



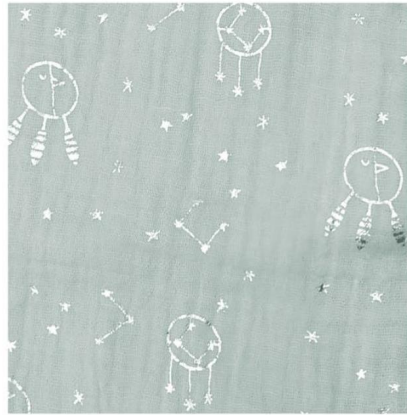




# Dreamcatcher



j52 Happy dreams



mg7 Dreamcatcher Mousseline



js2




js3 & pas3

Native Americans are great weavers of tradition and ancestral customs. One of these is the dream catcher. On the one hand the dream catcher helps catch and keep good ideas and dreams safe. On the other hand, it takes nightmares and bad memories far away from us and makes them disappear.



FLY  
DREAMCATCHER



11  
  
86 - 104 cm  
j52| Happy Dreams +  
mg7| Dreamcatcher

7  
  
62 - 80 cm  
j52| Happy Dreams

8  
  
62 - 80 cm  
mg7| Dreamcatcher





# Magic is in the air



p102 Unicorn is in the air



t3 Unicorn is in the air Translucent



m12 Magic Cloud



js2



js14 & pas14



SSP3 Magic is in the air Sweat (125x150 cm)

This panel measures 125 cm in height and consists of 7 panels, therefore measuring a total of 8.75 m.

We let our imaginations fly with one of the most magical creatures par excellence: the unicorn. These creatures are leaping around rainbows, shooting stars and clouds sprinkled with multicolour rain.

FLY

MAGIC IS IN  
THE AIR



29



116 - 152 cm

ssp31 Magic is in the air Sweat

36



KATIAFABRICS



25



86 - 104 cm

m12| Magic Cloud

30



116 - 152 cm

t3| Unicorn is in the air

**katia**

37



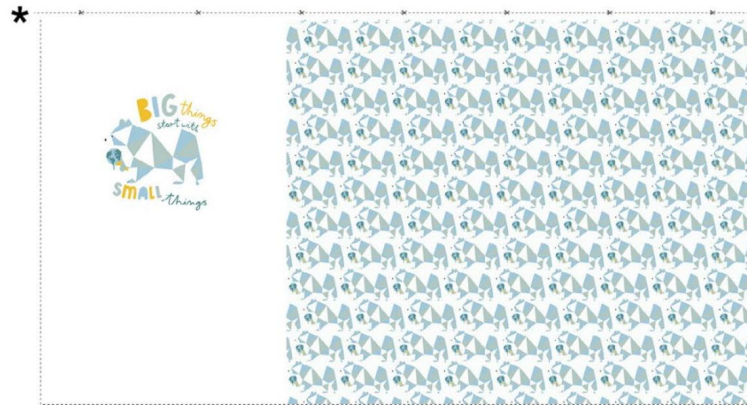


# Ice Cream World

KATIA FABRICS

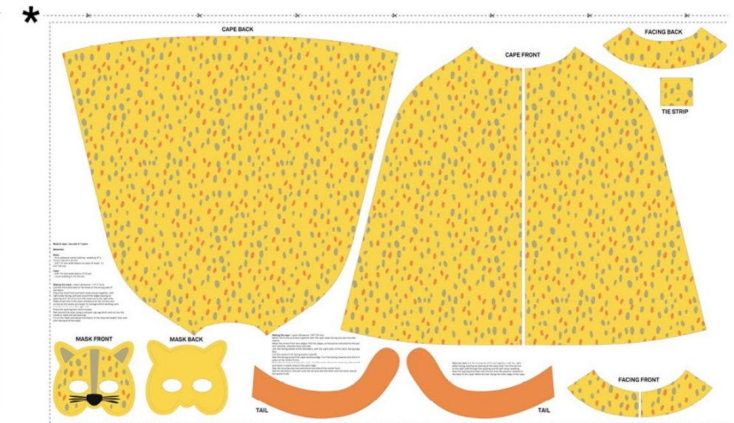


SS13 Polar Bear Ice Cream World



JP13 Polar Bear T-shirt (82x150 cm)

This panel measures 82 cm in height and consists of 10 panels, therefore measuring a total of 8.2 m.



PPT2 Leopard costume (90x150 cm)

This panel measures 90 cm in height and consists of 9 panels, therefore measuring a total of 8,1 m.

The advance of global warming continues, but we still have time to act. *Ice Cream World* presents us with a melting planet Earth, as if it were a melting ice cream. This image is as graphic (unfortunately) as it is realistic and one we need to take action against: *Big things start with small things*.







# Seals Balloon

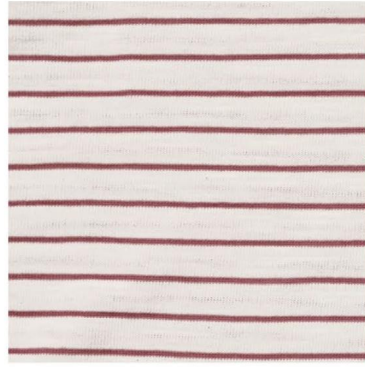
KATIA FABRICS



p103 Seals Balloon



mg6 Algae Balloon Mousseline



SJ2 Stripes Hazelnut



ST2 Stripes Hazelnut



sag1 Sari Gold



jp14 Seals Balloon Dress (100x150 cm)  
This panel measures 100 cm in height and consists of 8 panels, therefore measuring a total of 8 m.



*Seals Balloon* submerges us in an ocean full of life. A pod of seals swim and happily return with coral reef balloons whilst surrounded by other aquatic friends like the impressive whales. This collection includes illustrations accompanied by delicate floral ornamentation.

FLY

SEALS  
BALLOON



9



62 - 80 cm  
p103| Seals Balloon

10



62 - 80 cm  
p103| Seals Balloon +  
pas4| Poplin A, Solid



KATIAFABRICS

25



86 - 104 cm  
jp14| Seals Balloon  
Dress Panel

12



62 - 80  
mg6| Algae Balloon

2



62 - 80 cm  
mg6| Algae Balloon

4



62 - 80 cm  
mg6| Algae Balloon







# Hands & Feet

KATIAFABRICS



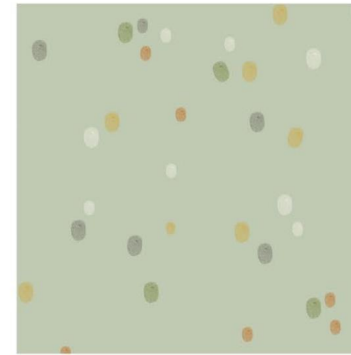
cs4 Animal foot



ss14 Animal foot



j53 Animal hand



j51 Animal Foot Print



js11 & pas11



js12 & pas12



js15 & pas15

Children's creativity has no limits! Thanks to the power of imagination, the paint imprints left by children's hands and feet becomes a perfect base for the print design. Drawings of flying animals and species in danger of extinction are printed on top in vibrant colours.

FLY

HANDS & FEET

14



86 - 104 cm

j511 Animal Foot Print + pas11| Poplin A. Solid + pas12| Poplin A. Solid + pas15| Poplin A. Solid + pa11| Poplin A. White

21



86 - 104 cm

j53| Animal Hand

22



86 - 104 cm

j511 Animal Foot Print

7



62 - 80 cm

j53| Animal Hand

8



62 - 80 cm

j51| Animal Foot Print

40



KATIAFABRICS

20



86-104 cm

ss14| Animal Foot



23



86 - 104 cm

t4| Sunshine

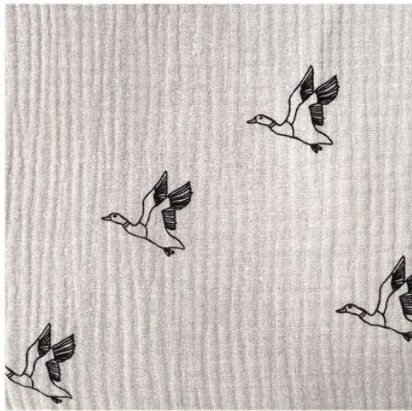
**katia**

41





# Fly with me



m9 FLY with me Mousseline



v3 Pink



sag1 Sari Gold



pww1 Plumetti Vintage White

Geese are excellent flyers, and their majestic flight in flock formation is a wonderful sight. When the leader of the flock gets tired, another goose takes its place and so on. This efficient teamwork is very effective and allows the birds to undertake long migratory journeys that can be truly inspiring.



FLY  
FLY WITH ME

25



86 - 104 cm  
m9| Fly with me  
Mousseline



KATIA FABRICS

13



86 - 104 cm  
sag1| Sari Gold

19



86 - 104 cm  
sag1| Sari Gold



19



86 - 104 cm  
pww1| Plumeti Vintage  
White

25



86 - 104 cm  
v3| Vichy Pink







# Play & Fly

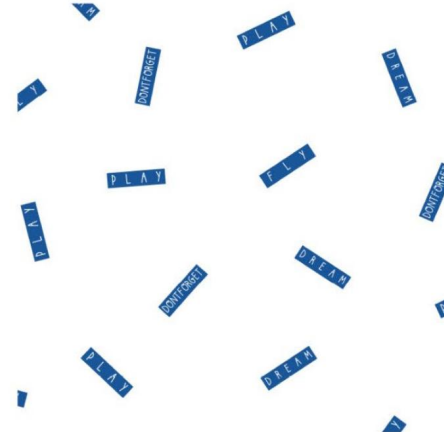
KATIAFABRICS



jm12 Don't forget to play



ssm4 Don't forget to play sledges



j54 Don't forget to fly Claim



js17

Imagine, create and play without limits are the essential activities in this collection. It is what makes them special, imaginative and unique. Have fun playing and letting your imagination fly with these amusing creatures that populate the *Play & Fly* fabrics.

FLY

PLAY & FLY



21



86 - 104 cm

j54| Don't forget to fly Claim

22



86 - 104 cm

ssm4| Don't forget to play sledges

44



KATIAFABRICS

18



86 - 104 cm

ssm4| Don't forget to play sledges + js17| Jersey Solid Color



26



106 - 152 cm

jm12| Don't forget to play

**katia**





# Into the River

KATIA FABRICS

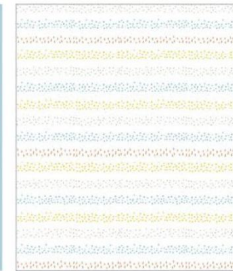


j22 Into The River Main



v4 Mint

\*



js2

pp3 Into the River Panel (42x150 cm)

This panel measures 42 cm in height and consists of 20 panels, therefore measuring a total of 8.4 m.

*Into the River* rinde homenaje a los castores, animales conocidos por su habilidad para construir diques en ríos y arroyos. Una pareja de castores y sus crías chapoteando alegremente en el agua destacan en estos estampados de alegres colores.





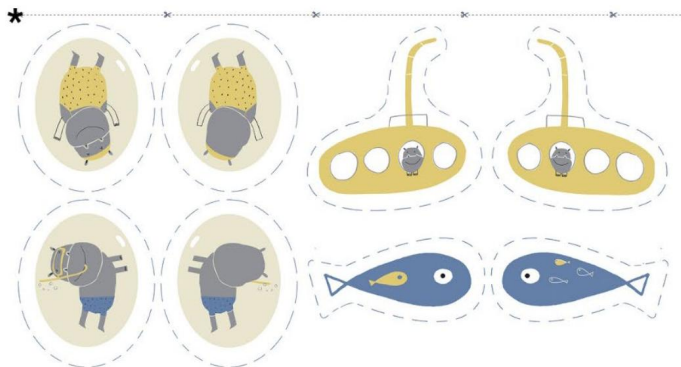


# Hippos Diving

KATIAFABRICS



j24 Hippos Diving



pp5 Hippos Diving Panel (80x150 cm)

This panel measures 80 cm in height and consists of 10 panels, therefore measuring a total of 8 m.



v1 Vichy Yellow



pm1 Green



js6

Well equipped happy hippos ready to enjoy an awesome diving session in crystalline waters with yellow submarines that have already got us humming... “We all live in a yellow submarine. Yellow submarine, yellow submarine”.







# Translucent

KATIAFABRICS



t1 Leopard Main Translucent



t2 Swim Rhinos Translucent



t3 Unicorn is in the air  
Translucent



t4 Sunshine Translucent

2030 | t  
**Translucent**  
100% TPU  
0,15 mm  
145-150 cm wide  
8 mts



Non-woven fabric (laminated). A translucent effect article with a natural cream base colour. Printed with beautiful and carefully studied designs to create very special and amusing semi-transparencies. Specially designed to use for making capes and raincoats to protect kids from the rain. Also suitable for all kinds of accessories that need to be water resistant.







# Plumeti Vintage



pvp1 Flying Platypus



pvp2 Leopard Leaves



pww1 Plumetti Vintage White

2052 | pvp  
**Plumeti Vintage Print**  
100% cotton  
80gr/mt2  
145-150 cm wide  
8 mts



Woven fabric. This “plumeti” (fine Swiss cotton type fabric) effect is framed between discreet embroidered vertical lines for a retro, vintage look. The base fabric is a cool and super fine 100% cotton of the highest quality. This new version is updated with modern designs printed on the plumeti base fabric, so introducing a novelty product into the marketplace.



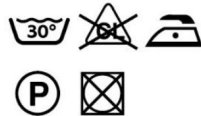




# Sari Gold



2037 | sag  
**Sari Gold**  
 99% Cotton  
 +1% Lamé-Lurex  
 110/115 gr./mt2  
 145-150 cm wide - 8 mts



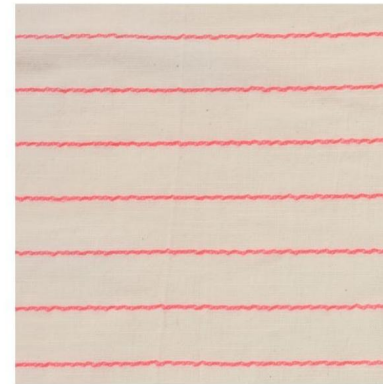
sag1 Sari Gold

Woven fabric. Fabric with a cream cotton base and a natural, slightly rustic appearance. The micro-slub weft threads create a slightly wrinkled surface and a horizontal gold lame stripe adds a touch of distinction and sophistication. A lightweight and cool fabric suitable for all kinds of garments.

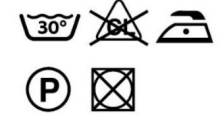


# Sari Fluor

KATIA FABRICS



2038 | saf  
**Sari Fluor**  
 97% Cotton  
 +3% Polyester  
 110/115 gr./mt2  
 145-150 cm wide - 8 mts



saf1 Sari FLuor

Woven fabric. Fabric with a cream cotton base and a natural, slightly rustic appearance. The micro-slub weft threads create a slightly wrinkled surface and horizontal fluorescent coral coloured stripes add an authentic summer colour contrast. Versatile and cool, suitable for all kinds of garments and accessories.



# Panama Stripes



pm1 Green



pm2 Orange



pm3 Black

Woven fabric. Fabric with a subtle wrinkled effect and a natural appearance due to the use of micro-slub effect weft threads. Notable for its versatility and suitable for making all kinds of garments and accessories: shawls, sarongs, scarves, shirts, trousers. A very elegant and natural fabric suitable for all types of cool and drapery garments.



2039 | pm  
**Panama Stripes**  
83% cotton +  
17% Viscose  
105/110 gr./mt2  
145-150 cm wide -8 mts





# Sari Gold, Sari Fluor & Panama Stripes for Woman

KATIAFABRICS



sag1 Sari Gold



sag1 Sari Gold



saf1 Sari Fluor



saf1 Sari Fluor



pm3 Black



pm1 Green



pm1 Green



pm2 Orange



pm2 Orange



pm3 Black



# Slub Jersey

KATIAFABRICS



SJ1 Stripes Aqua



SJ2 Stripes Hazelnut



SJ3 Stripes Green Fuor



2035 | sj

**Slub Jersey**

86% Cotton

+14% Polyester

110/115 gr./mt2

180 cm wide - 8 mts



Circular jersey knit fabric. Cool summer jersey fabric with optimum lightness. The fashionable slub effect surface texture is created by the cotton slub yarn used in the base fabric.

All colourways have a cotton base in cream with a discreet fluorescent stripe design that creates a summer look that is both informal and authentic. The 180 cm fabric width offers maximum yield and lengthwise savings of lineal fabric quantities necessary for making all kinds of garments.





**katia**



# Sweat Towel

KATIAFABRICS



st1 Stripes Aqua



st2 Stripes Hazelnut



st3 Stripes Green Fluor



Light towelling effect fabric with a slub appearance for a fun and informal summer look. The three colourways offered all have a cream base with discreet horizontal stripes in different fluorescent colours. The look is sporty with a modern touch.







# Plumetti Bicolor

KATIA FABRICS



pb1 Pink & Green



pb2 White & Grey



pb3 Pink Coral

2128 | pb  
**Plumetti Bicolor**  
80% cotton +  
20% Polyester  
70/75gr/mt2  
145-150 cm wide - 8 mts









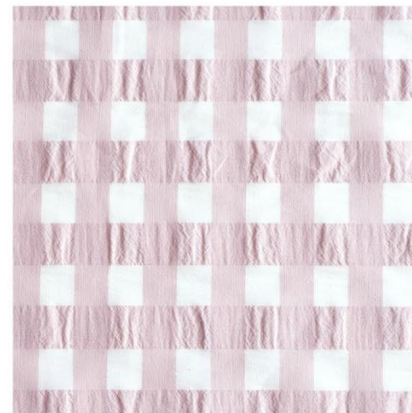
# Vichy



v1 | Vichy Yellow



v2 | Pink Sand



v3 | Pink



v4 | Mint

2016 | v  
**Vichy**  
65% Cotton +  
35% Polyester  
145 gr./mt2  
145-150 cm wide - 8 mts



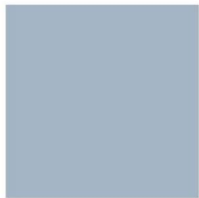






# Jersey Solid Color

KATIA FABRICS



JS1



JS2



JS3



JS4



JS5



JS6



JS7



JS8



JS9



JS10



JS11



JS12



JS13



JS14



JS15



JS17







# Bambula



b1 Bambula

2051 | b  
**Bambula**  
100% Cotton  
105 gr./mt2  
130 cm wide  
10 mts



# Denim Basic



db1 Denim Basic

2025 | db  
**Denim Basic**  
100% Cotton  
125 gr./mt2  
145-150 cm wide  
10 mts



Wash separately

KATIA FABRICS

Woven fabric. As its commercial name indicates in Spanish, this 100% cotton cheesecloth (bambula) fabric is cool, lightweight and has a wonderful drape. An austere and elegant fabric suitable for all kinds of spring and/or summer garments. Available in white only.

This is exactly the same fabric product as DENIM. It is unprinted and has the same composition, thickness and width. This basic denim in denim blue jeans can be combined with the printed DENIM designs or used on its own as a solid colour. Its light and colour fastness characteristics, which are particularly low probability, are the same as for Denim and therefore already well known.



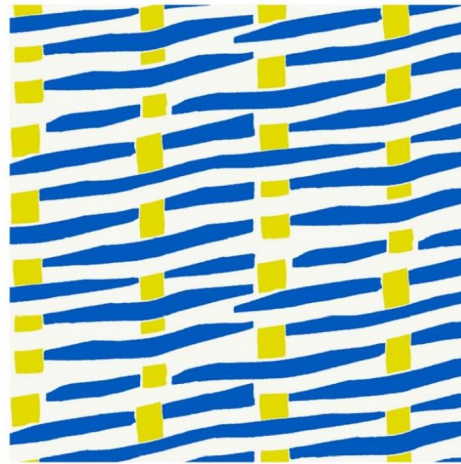




# Canvas Ecrú



ce1 Flamingo



ce2 Fluor Abstract

2058 | ce  
**Canvas Ecrú**  
100% Organic Cotton  
250 gr./mt<sup>2</sup>  
145-150 cm wide  
8 mts



Woven fabric. New canvas type fabric with a 100% Organic Cotton composition. Somewhat heavier weight, 215 g/m<sup>2</sup>, than CANVAS at 250 g/m<sup>2</sup>, with a cream base colour as opposed to the linen base of CANVAS. As a result, the colours in CANVAS ECRU have more light and a fresher appearance.





ce2 | Fluor Abstract  
cn1 | Canvas Natur



ce1 | Flamingo  
csn1 | Canvas Slim Natur



# Canvas

KATIAFABRICS



c12 Buoy



c16 Hippo Diving



c17 My first bath



cn1 Canvas Natur

2004 | c  
**Canvas**  
100% Cotton  
215 gr./mt2  
145-150 cm wide  
8 mts







c12 | Buoy  
csn1 | Canvas Slim Natur



c16 | Hippo Diving  
csn1 | Canvas Slim Natur



c17 | Myfirst bath



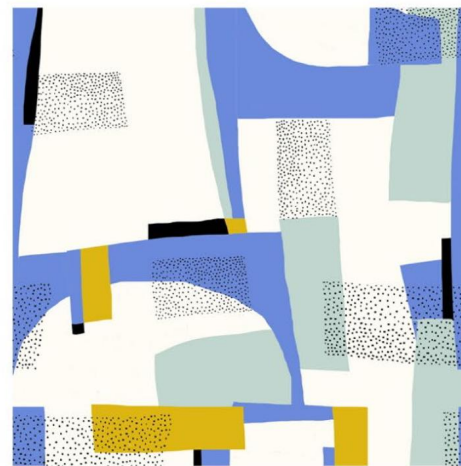
# Canvas Gold



CG10 Ostrich



CG11 Abstract Pink



CG12 Abstract Aqua

2005 | cg  
**Canvas Gold**  
100% Cotton  
215 gr./mt2  
145-150 cm wide  
8 mts







cg10 | Ostrich  
cn1 | Canvas Natur



cg11 | Abstract Pink  
cn1 | Canvas Natur

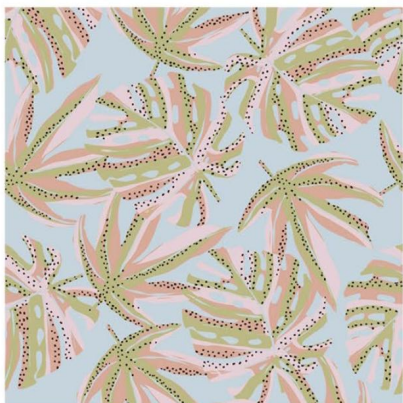


cg12 | Abstract Aqua  
cn1 | Canvas Natur

KATIA  
FABRICS

# Canvas Slim

KATIA FABRICS



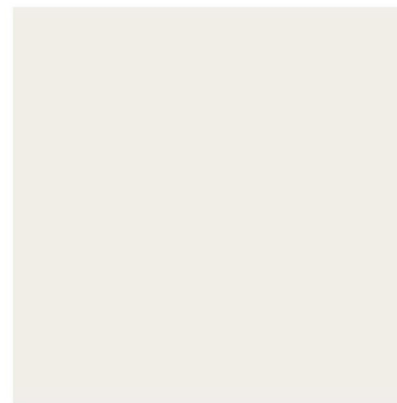
cs1 Ficus



cs2 Kangaroo



cs3 Tropical Sea



csn1 Canvas Slim Natur

2043 | cs

**Canvas Slim**

100% Cotton

200 gr./mt2

8 mts

140 cm wide



cs4 Animal Foot



cs5 Tropical Birds

Woven fabric. A new Canvas article with a more commercial price point. In this case it is lighter in weight (200 g/m<sup>2</sup>) than our classic repeat article CANVAS (215 g/m<sup>2</sup>) and with a width of 140 cm.

**katia**





cs1 | Ficus  
csn1 | Canvas Slim Natur



cs2 | Kangaroo  
csn1 | Canvas Slim Natur



cs3 | Tropical Sea  
csn1 | Canvas Slim Natur



cs4 | Animal Foot



cs5 | Tropical Birds  
csn1 | Canvas Slim Natur



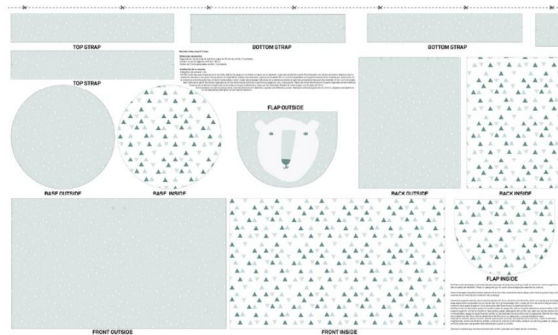


# Canvas Slim Panel

KATIA FABRICS



CSP1 World Panel (138x140 cm)  
6 panels in a piece of 8,40 m.



CSP2 Polar Bear Bag (82x140 cm)  
10 panels in a piece of 8,2 m.



CSP3 Toucan Fluor Bag (98x140 cm)  
8 panels in a piece of 8 m.



2032 | csn  
**Canvas Slim Panel**  
100% Cotton  
200 gr./mt2  
140 cm wide  
Special sizes



KATIA  
FABRICS

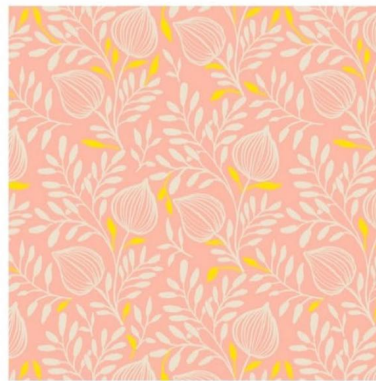
## Canvas Slim Waterproof



cspw1 Flowers Panel (200x140 cm)



csw1 Aubergines



csw2 Provence

Woven fabric. This is the same article as SLIM CANVAS, but with anti-stain and waterproof treatments. The weight of CANVAS SLIM differs due to the application of the acrylic resin treatment (+ 20 g/m<sup>2</sup>).

CANVAS SLIM WATERPROOF – 2 beautiful Digital print designs (CSW1 & CSW2)

CANVAS SLIM WATERPROOF PANEL – 1 design (CSWP1 CSWP1 Flowers Panel), with a placed pattern specially designed for making table cloths measuring 200 x 140 cm.

2033 | csw

**Canvas Slim Waterproof**

100% Cotton

200 gr./mt<sup>2</sup>-Waterproofed

with PVC resin

140 cm wide - 8 mts



#Canvas Home



cswp1 | Flowers Panel



#Canvas Home



csw1 | Aubergines

#Canvas Home



csw2 | Provence

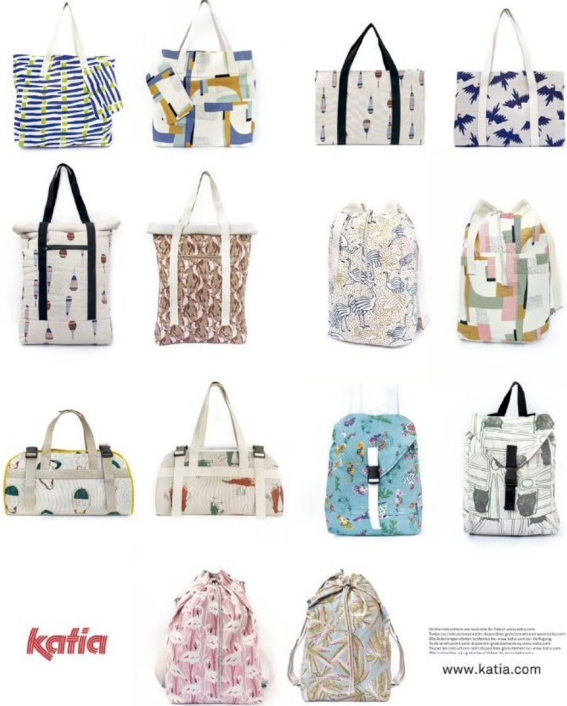


# Bags & Accesories

Todas las instrucciones y patrones tamaño A4 están disponibles en [www.katia.com](http://www.katia.com).

**KATIA FABRICS** Canvas Bag & Accesories

**FLY**  
SPRING / SUMMER 2021



**katia** [www.katia.com](http://www.katia.com)

Alle beschriebenen und abgebildeten Artikel sind als Musterentwürfe zu verstehen. Die Abbildungen sind als Anregung für die Gestaltung zu verstehen. Die Abbildungen sind als Anregung für die Gestaltung zu verstehen. Die Abbildungen sind als Anregung für die Gestaltung zu verstehen.

**KATIA FABRICS** Canvas Home

**FLY**  
SPRING / SUMMER 2021



**katia** [www.katia.com](http://www.katia.com)

Alle beschriebenen und abgebildeten Artikel sind als Musterentwürfe zu verstehen. Die Abbildungen sind als Anregung für die Gestaltung zu verstehen. Die Abbildungen sind als Anregung für die Gestaltung zu verstehen. Die Abbildungen sind als Anregung für die Gestaltung zu verstehen.

Poster para tiendas / Poster for shops / Poster per negozi / Poster für die Geschäfte / Poster pour boutiques / Poster voor winkels



# Eat & Sew



7819 | es  
**Eat & Sew**  
100%EVA - «BPA free»  
Thickness: 0.1 mm  
120 cm wide



Commonly known as “food plastic”, it is generally used for bags that contain food items, for food packaging, and above all, as a lining for sandwiches or kid’s snack bags. It is also used to line refrigerators or lunch boxes and all food types that need protecting from humidity or water, given that EAT&SEW is totally waterproof.





# Fiber Fill



The use of Fiber Fill is obvious. It is fibre for filling all types of cushions, pillows, toys, etc. Thanks to its polyester composition, it is very voluminous and recuperates well after being flattened during use.

7807 | ff  
**Fiber Fill**  
Net weight: 500g  
100% Polyester-  
silicone hollow fiber.

Prints  
& Clothes

**KATIA**  
FABRICS

**katia**

**New Articles**

AUTUMN / WINTER 20/21

**katia**





# Rustic Cotton

## Four Seasons

KATIA FABRICS



RC1 Salinas birds



RC2 Salinas birds



RC3 Pacman



RC4 Pacman



RC5 Aladdin Carpet



RC6 Aladdin Carpet



# Rustic Cotton Solid

## Four Seasons



RS10



RS15



RS3



RS4



RS11



RS12











# Padded Metallized



PMT1 Pink



PMT2 Golden



PMT3 Blue



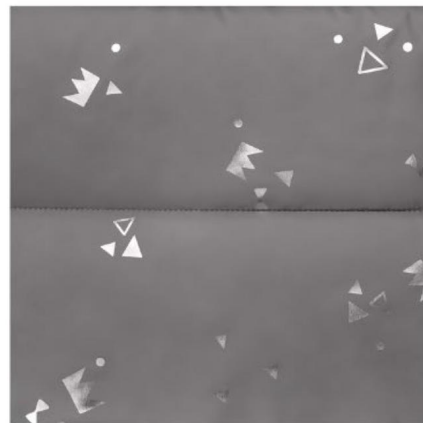




# Padded Silver Print



psp1 Pink



psp2 Pearl Grey



psp3 Mustard







# Poplin Antibacterian Solid

## Four Seasons

KATIA FABRICS



PAS10



PAS9



PAS3



PAS4



PAS5



PAS11



PAS12



PAS15



PAS13



PAS14



PAS16



PAS18

# Poplin Antibacterian White



PA1





# Poplin Antibacterian Mask Panels

Four Seasons



Poplin Antibacterian Mask Panel  
2050-01 - Smile with your eyes  
100 x 145-150 cm





# Poplin Antibacterian Mask Panels

Four Seasons



Poplin Antibacterian Mask Panel  
2050-04-Katia Revival 2  
100 x 168 cm



# Poplin Antibacterial Mask Panels

## Four Seasons



Poplin Antibacterial Mask Panel  
v2050-05-Illustrators 2  
100 x 168 cm





J = Jersey	MG = Mousseline Gold	PVP = Plumeti Vintage Print	PM = Panama Stripes
JG= Jersey Gold	D = Denim	PVW = Plumeti Vintage White	SJ = Slub Jersey
JM = Jersey Mélange	P = Poplin	PB = Plumeti Bicolor	ST = Sweat Towel
JS = Jersey Solid Color	SS = Summer Sweat	T = Translucent	V = Vichy
JP = Jersey Panel t-shirt	SSM = Summer Sweat Mélange	SG = Sari Gold	B = Bambula
M = Mousseline	SSP = Summer Sweat Panel	SF = Sari Fluor	

**JUNGLE HEROES**



**CONTEMPORARY BIRDS**



**EARTH & DREAMS**



**WILD & FREE**



**ALADDIN**



**FLYING KANGAROOS**



**JUST HANGING OUT**



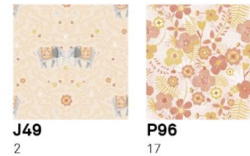
**FLY & SWIM WITH ME**



**JUMBO**



**JUMBO**



**SALINAS BIRDS**



**HIPPOS DIVING**



**FLY WITH ME**



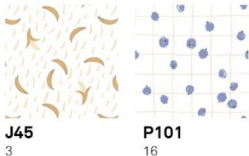
**TULUM MEXICO**



**HEALTHY FLY**



**HEALTHY FLY**



**ICE CREAM WORLD**



**ICE CREAM WORLD**



**INTO THE RIVER**



**MAGIC IS IN THE AIR**



**SEALS BALLOON**



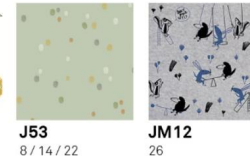
**DREAMCATCHER**



**HANDS & FEET**



**HANDS & FEET**



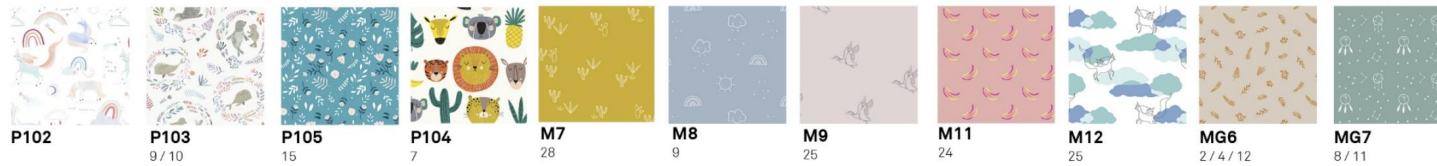
**PLAY & FLY**



POPLIN FABRICS



MOUSSELINE FABRICS



JERSEY FABRICS



SUMMER SWEAT FABRICS



DENIM FABRICS





TRANSLUCENT



**T1** 30      **T2** 23 / 33      **T3** 30      **T4** 23

PLUMETI VINTAGE



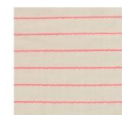
**PVP1** 19      **PVP2** 28      **PVW1** 19

SARI GOLD



**SAG1** 13 / 19

SARI FLUOR



**SAF1** 13 / 16

PANAMA STRIPES



**PM1** 6      **PM2** 12 / 13 / 27      **PM3** 7 / 8

SLUB JERSEY



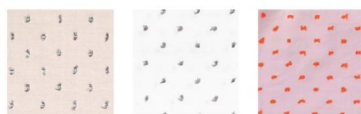
**SJ1**      **SJ2** 12      **SJ3**

SWEAT TOWEL



**ST1** 3 / 12      **ST2** 24      **ST3** 28 / 29

PLUMETI BICOLOR



**PB1**      **PB2**      **PB3** 1 / 4

VICHY



**V1**      **V2**      **V3** 25      **V4**

CANVAS



**C12**      **C16**      **C17**      **CN1**

CANVAS GOLD



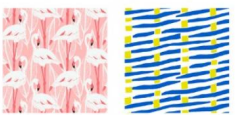
**CG10**      **CG11**      **CG12**

CANVAS SLIM



**CS1**      **CS2**      **CS3**      **CS4**      **CS5**      **CSN1**

CANVAS ECRU



**CE1**      **CE2**

CANVAS SLIM WATERPROOF



**CSW1**      **CSW2**

BAMBULA



**B1**

DENIM BASIC



**DB1** 4 / 10 / 17

POPLIN PANELS

JUNGLE HEROES



80x150 cm      **PP14** \*

JUNGLE HEROES



80x150 cm      **PPT1** \*

SALINAS BIRDS



64x150 cm      **PP11** \*

ICE CREAM WORLD



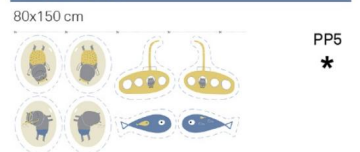
90x150 cm      **PPT2** \*

INTO THE RIVER



42x150 cm      **PP3** \*

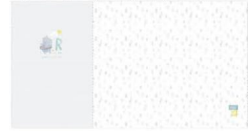
HIPPUS DIVING



80x150 cm      **PP5** \*

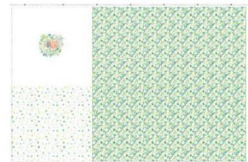
JERSEY PANELS

**FLY & SWIM WITH ME**  
82x150 cm



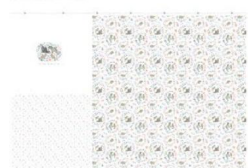
JP9  
7 / 8

**JUMBO**  
100x150 cm



JP12  
25

**SEALS BALLOON**  
100x150 cm



JP14  
25

**TULUM MEXICO**  
82x150 cm



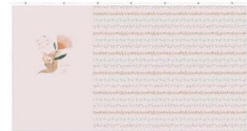
JP11  
\*

**ICE CREAM WORLD**  
82x150 cm



JP13  
\*

**FLYING KANGAROOS**  
82x150 cm



JP8  
3

**EARTH & DREAMS**  
82x150 cm



JP7  
31  
\*

**WILD & FREE**  
125x150 cm



SSP1  
20

**MAGIC IS IN THE AIR**  
125x150 cm



SSP3  
29

**FLY & SWIM WITH ME**  
65,5x150 cm



SSPB1  
\*

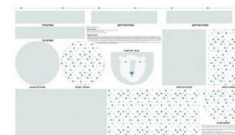
CANVAS SLIM PANELS

138x140 cm



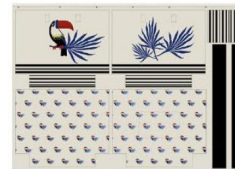
CSP1  
\*

82x140 cm



CSP2  
\*

98x140 cm



CSP3  
\*

CANVAS SLIM WATERPROOF PANEL

200x140 cm



CSPW1  
\*

Spring / Summer collection

JERSEY SOLID COLOR



JS1 JS2 JS3 JS4 JS5 JS6  
8 31 4 8



JS7 JS8 JS9 JS10 JS11 JS12  
23



JS13 JS14 JS15 JS17  
4 31 8 / 18

Todos nuestros estampados están realizados en rotativa excepto aquellos que, debido a la ilustración, necesitan ser realizados digitalmente.

All our designs are made using rotary print except for those that, due to the illustration, need to be printed digitally.

Digital prints: j48, j53, jp8, jp9, jp12, jp14, p93, p94, p95, p96, p102, p103, pvp1, pvp2, ssp1, ssp3, t1, t2, t3, t4.

\* **ES:** Estos paneles no están incluidos en la Revista "Fly" Primavera/ Verano 2021 porque cada uno tiene su propio folleto. Todas las instrucciones y patrones en tamaño A4 están disponibles de forma gratuita en [www.katia.com](http://www.katia.com)

**EN:** These panels are not included in the Spring/Summer 2021 Fly Magazine because each one is featured in its own leaflet. All the instructions and patterns in a size A4 format are available for free at <http://www.katia.com>

**DE:** Diese Panels sind nicht in der Zeitschrift „Fly“ Frühling/ Sommer 2021 enthalten, weil sie separat in Broschüren veröffentlicht sind. Alle Anleitungen und Schnittmuster stehen im DIN-A4-Format kostenlos zur Verfügung bei [www.katia.com](http://www.katia.com)

**IT:** Questi pannelli non sono inclusi nella Rivista "Fly" Primavera/ Estate 2021 perché ciascuno ha il proprio volantino di istruzioni. Tutte le istruzioni e i modelli in formato A4 sono disponibili gratuitamente su [www.katia.com](http://www.katia.com)

**FR:** Ces panneaux ne figurent pas dans la Revue Fly Printemps/ Été 2021 car ils disposent de leur propre support. Tous les patrons et instructions au format A4 sont disponibles gratuitement sur [www.katia.com](http://www.katia.com).

**NE:** Deze panelen zijn niet opgenomen in het tijdschrift "FLY" Lente / Zomer 2021 omdat elk zijn eigen brochure heeft. Alle instructies en patronen in A4-formaat zijn gratis verkrijgbaar op onze website [www.katia.com](http://www.katia.com)



LEAFLETS FOR PANELS

**ES:** Estos paneles no están incluidos en la Revista "Fly" Primavera/ Verano 2021 porque cada uno tiene su propio folleto. Todas las instrucciones y patrones en tamaño A4 están disponibles de forma gratuita en [www.katia.com](http://www.katia.com)

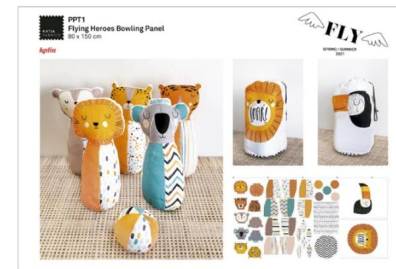
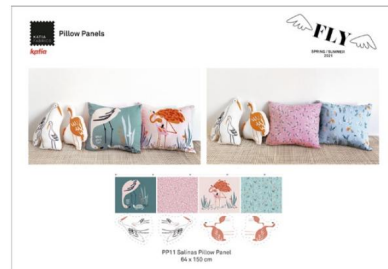
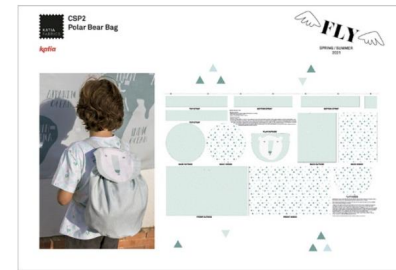
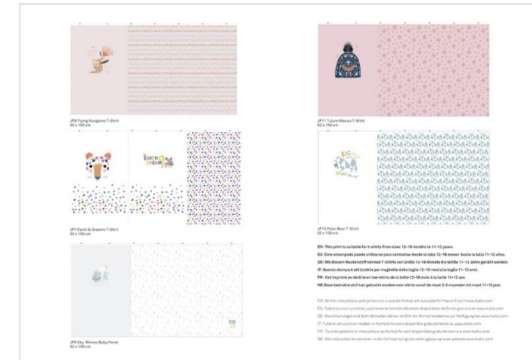
**EN:** These panels are not included in the Spring/Summer 2021 Fly Magazine because each one is featured in its own leaflet. All the instructions and patterns in a size A4 format are available for free at <http://www.katia.com>

**DE:** Diese Panels sind nicht in der Zeitschrift „Fly“ Frühling/Sommer 2021 enthalten, weil sie separat in Broschüren veröffentlicht sind. Alle Anleitungen und Schnittmuster stehen im DIN-A4-Format kostenlos zur Verfügung bei [www.katia.com](http://www.katia.com)

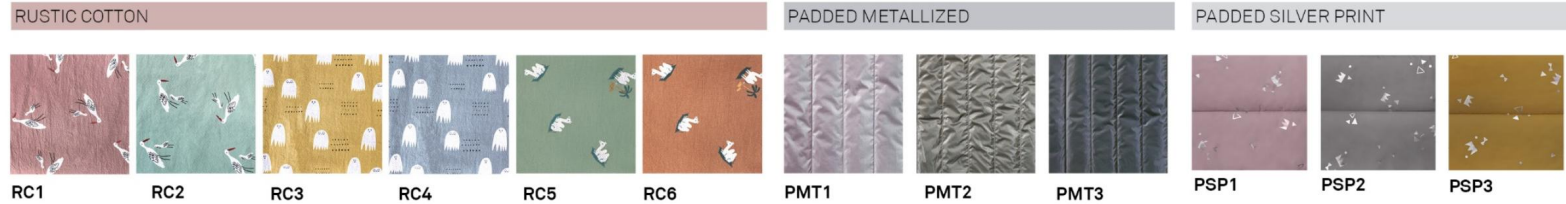
**IT:** Questi pannelli non sono inclusi nella Rivista "Fly" Primavera/ Estate 2021 perché ciascuno ha il proprio volantino di istruzioni. Tutte le istruzioni e i modelli in formato A4 sono disponibili gratuitamente su [www.katia.com](http://www.katia.com)

**FR:** Ces panneaux ne figurent pas dans la Revue Fly Printemps/Été 2021 car ils disposent de leur propre support. Tous les patrons et instructions au format A4 sont disponibles gratuitement sur [www.katia.com](http://www.katia.com).

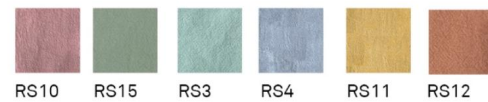
**NE:** Deze panelen zijn niet opgenomen in het tijdschrift "FLY" Lente / Zomer 2021 omdat elk zijn eigen brochure heeft. Alle instructies en patronen in A4-formaat zijn gratis verkrijgbaar op onze website [www.katia.com](http://www.katia.com)



NEW ARTICLES AW 20/21



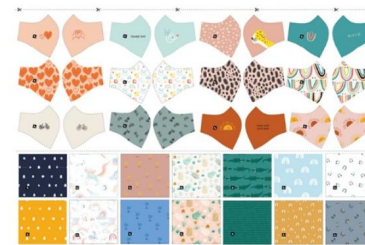
RUSTIC COTTON SOLID COLOR



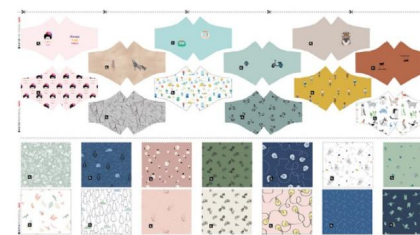
ANTIBACTERIAN SOLID COLOR



POPLIN ANTIBACTERIAN MASK PANELS



Poplin Antibacterial Mask Panel  
2050-01-Smile with your eyes  
100 x 145-150 cm



Poplin Antibacterial Mask Panel  
2050-04-Katia Revival 2  
100 x 168 cm



Poplin Antibacterial Mask Panel  
v2050-05-Illustrators 2  
100 x 168 cm



# KATIA FABRICS SEWING MAGAZINE

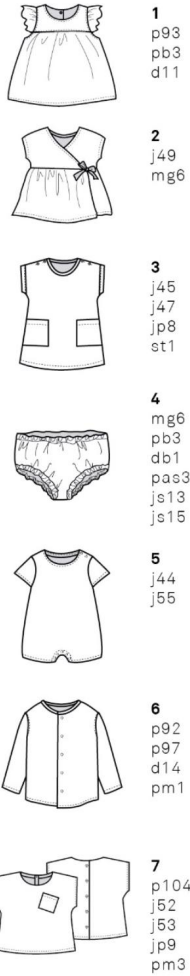
# Sewing Pattern Magazine

Let yourself fall in love with the fabrics from Katia Fabrics! Each fabric is accompanied by explanatory patterns that make it easy for you to sew your own creations. Our patterns allow you to make all kinds of garments (dresses, sweat tops, t-shirts, jumpsuits, sacks, rain coat...) with your own hands. They also include original decorative elements like cushions and Christmas decorations. We also provide you with step by step video tutorials to accompany you through each part of the creative process. Katia Fabrics includes all kinds of designs so you can dress your little ones and decorate your home in the same style.

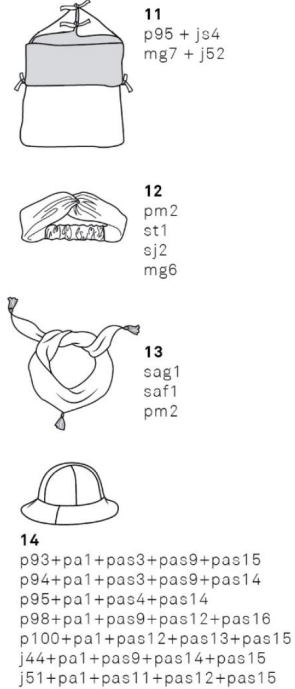




**Baby**



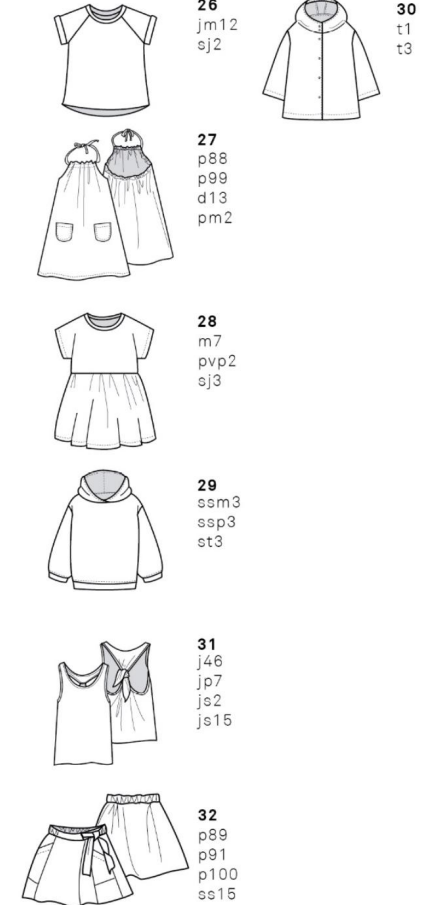
**Accessories**



**Little**



**Kids**



Prints  
& Clothes

**KATIA**  
FABRICS

Sewing Patterns  
Magazine

**katia**

[www.katia.com](http://www.katia.com)  
EUR 9,95

**DIY**

SPRING / SUMMER

**33**  
**PATRONES**

DESDE 1 MES A 12 AÑOS  
(62CM-152CM)

**33**  
**PATTERNS**

FROM 1 MONTH TO 12 YEARS  
(62CM-152CM)

**katia**



## FLY COLLECTION

FLY es una colección que se inspira en el concepto de VOLAR. Volar literalmente pero también en su versión más abstracta: dejar volar la imaginación.

FLY nos invita a no dejar nunca de crear, soñar y jugar sin límites. De la mano de nuestros pequeños imaginamos un mundo donde los animales viven felices sin trampear por la cuerda floja de la extinción.

Compartamos y aprendamos más que nunca con nuestros minis y volveremos a ser niños. Deja que tu imaginación vuele alto con FLY.

La temporada SS21 incluye telas ligeras, transpirables y fresquitas para que los niños y niñas se sientan cómodos y confortables para jugar e imaginar sin límites. Mezclando nuevos artículos con básicos encontramos estampados con diseños únicos creados en exclusiva para Katia Fabrics por reputados artistas e ilustradores.

Unos prints que protagonizan los tejidos con los que podrás coser todo aquello que te propongas y vestir de forma única a tus peques.

Las telas de la revista Katia Fabrics están diseñadas por el equipo de Katia Fabrics.



Magazine Production & edition: Katia Fabrics Team.  
 Fil Katia, S.A.  
 Av. Catalunya, s/n - 08296  
 Castellbell i el Vilar (Barcelona) España  
 93 834 02 01  
 www.katia.com  
 fabrics@katia.com  
 info@katia.com

FLY is a collection inspired by the concept of FLYING. To fly in the literal sense, but also in a more abstract manner: to let your imagination fly.

FLY encourages us to never stop believing, dreaming and playing without limits. With the help of our little ones, we can imagine a world where animals live together happily without having to face the threat of extinction.

Now, more than ever, we can share and learn the experience of becoming kids again in the company of our small children. Let your imagination run free with FLY.

The SS21 collection includes fabrics that are lightweight, breathable and cool. As a result, girls and boys are going to feel comfortable and totally at ease to play and imagine without limits. We present a mix of new articles along with our basic items. These include unique print designs created exclusively for Katia Fabrics by renowned artists and illustrators.

Prints that transform fabrics into stunning designs so you can sew anything you desire including unique clothing for your kids.

The prints in the Katia Fabrics magazine are designed by the Katia Fabrics team.



<b>COLLECTIONS</b>	
Jungle Heroes	04
Contemporary Birds	06
Earth & Dreams	08
Wild & Free	10
Aladdin	12
Flying Kangaroos	14
Fly & Swim with me	16
Jumbo	18
Just hanging out	22
Tulum Mexico	24
Healthy Fly	26
Salinas	28
Dreamcatcher	35
Magic is in the air	36
Seats Balloon	38
Hands & Feet	40
Fly with me	42
Play & Fly	44
<b>DESIGN INDEX</b>	30
INDICE DE DISEÑOS / INHALTSVERZEICHNIS DER MODELLE / INDICE DEI MODELLI / INDEX DES MODÈLES / INDEX VAN ONTWERPEN	
<b>GENERAL INSTRUCTIONS &amp; SIZE CHARTS</b>	32
INSTRUCCIONES GENERALES Y TABLAS DE MEDIDAS/ ALLGEMEINE HINWEISE UND MASSTABELLEN / ISTRUZIONI GENERALI E TABELLA DELLE MISURE / INSTRUCTIONS GÉNÉRALES ET TABLEAU DE MESURES/ ALGEMENE INSTRUCTIES EN MEETABELLEN	
<b>STEP BY STEP INSTRUCTIONS</b>	34
INSTRUCCIONES PASO A PASO / ANLEITUNGEN SCHRITT FÜR SCHRITT / ISTRUZIONI PASSO DOPO PASSO / INSTRUCTIONS PAS À PAS / INSTRUCTIES STAP VOOR STAP	
<b>PRINT COLLECTION</b>	46

FLY

JUNGLE  
HEROES



KATIAFABRICS

28



116 - 152 cm

m7| Cactus Mousseline

7



62 - 80 cm

p104| Jungle Heroes

8



62 - 80 cm

pm3| Panama Stripes  
Black

5



62 - 80 cm

j55| Jungle Heroes



FLY

CONTEMPORARY BIRDS



31



116 - 128 cm

j46| Contemporary Birds

32



116 - 128 cm

ss15| Contemporary Birds Coord.



KATIA FABRICS

12



86 - 104 cm

sj2| Slub Jersey Hazelnut

24



86 - 104 cm

st2| Sweat Towel Stripes Hazelnut

26



106 - 152 cm

sj2| Slub Jersey Hazelnut



24



86 - 104 cm

m11| Contemporary Birds Mousseline





FLY

EARTH & DREAMS



6



62 - 80 cm

p92| Monkey Dreams

8



62 - 80 cm

js17| Jersey Solid Color

31



116 - 128 cm

jp7| Earth & Dreams T-Shirt

32



116 - 128 cm

p91| Earth & Dreams

8



FLY

ICE CREAM WORLD

6



62 - 80 cm

pm1| Panama Stripes Green

8



62 - 80 cm

js4| Jersey Solid Color



20



62 - 80 cm

ss13| Ice Cream World

**katia**

9



FLY

WILD & FREE

20



86 - 104 cm  
ssp1| Wild & Free  
Summer Sweat Panel



28



116 - 152 cm  
pvp2| Leopard Leaves



KATIA FABRICS

14



62 - 80 cm

j44| Leopard Main +  
pas9| Poplin A. Solid +  
pas14| Poplin A. Solid +  
pas15| Poplin A. Solid +  
pa1| Poplin A. White

5



62 - 80 cm

j44| Leopard Main

30



116 - 152 cm

t1| Leopard Main  
Translucent



18



86 - 104 cm

ss11| Leopard doto +  
js14| Jersey Solid Color

**katia**





FLY

ALADDIN

12



116 - 128 cm  
pm2| Panama Stripes  
Orange

13



116 - 128 cm  
pm2| Panama Stripes  
Orange

27



116 - 128 cm  
pm2| Panama Stripes  
Orange

12



KATIA FABRICS

15



86 - 104 cm  
p105| Aladdin Flowers

3



62 - 80 cm  
j47| Aladdin Main

4



62 - 80 cm  
js15| Jersey Solid Color

1



62 - 80 cm  
d11| Aladdin Flowers +

4



62 - 80 cm  
db1| Denim Basic

10



62 - 80 cm  
d11| Aladdin Flowers +  
db1| Denim Basic

**katia**



FLY

FLYING KANGAROOS



14



86 - 104 cm

p93| Flying Kangaroos + pas3| Poplin A. Solid + pas9| Poplin A. Solid + pas15| Poplin A. Solid + pa1| Poplin A. White

19



86 - 104 cm

pvp1| Flying Platypus

14



KATIA FABRICS

14



86 - 104 cm

p94| Flying K. Flowers + pas3| Poplin A. Solid + pas9| Poplin A. Solid + pas14| Poplin A. Solid + pa1| Poplin A. White

1



62 - 80 cm

p93| Flying Kangaroos

4



62 - 80 cm

pas3| Poplin A. Solid

10



62 - 80 cm

p94| Flying K. Flowers + pas3| Poplin A. Solid

3



62 - 80 cm

jp8| Flying K. Kangaroo Dress Panel

9



62 - 80 cm

p94| Flying K. Flowers

Katia

15

FLY

FLY & SWIM WITH ME

7



62 - 80 cm  
jp9| Sky Rhinos  
Baby Panel

8



62 - 80 cm  
jp9| Sky Rhinos  
Baby Panel



33



86 - 104 cm  
t2| Swim Rhinos  
Translucent



KATIA FABRICS

14



86 - 104 cm

p95| Sky Cloud Rhinos+  
pa1| Poplin A. White +  
pas4| Poplin A. Solid +  
pas14| Poplin A. Solid

9



62 - 80 cm

j48| Swim Rhinos

10



62 - 80 cm

p95| Sky Cloud Rhinos+  
pas4| Poplin A. Solid

12



62 - 80

st1| Sweat Towel  
Stripes Aqua

3



62 - 80 cm

st1| Sweat Towel S. Aqua

9



62 - 80 cm

m8| Rhinos Mouseline

11



86 - 104 cm

p95| Sky Cloud Rhinos+  
js4| Jersey Solid Color

**katia**



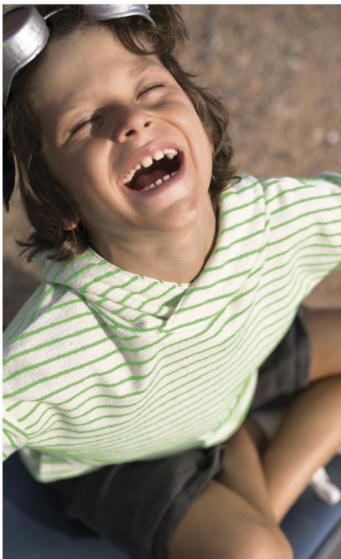
FLY

JUMBO

29



116 - 152 cm  
st3| Stripes Green Fluor



28



116 - 152 cm  
sj3| Stripes Green Fluor



15



86 - 104 cm  
d12| Jumbo Denim

18

KATIAFABRICS



25



86 - 104 cm  
jp12| Jumbo Dress Panel

**katia**

19



FLY

JUMBO



1



62 - 80 cm

pb3| Pink Coral

4



62 - 80 cm

pb3| Pink Coral

2



62 - 80 cm

j49| Jumbo Main



KATIAFABRICS

13



86 - 104 cm

saf1| Sari Fluor

16



86 - 104 cm

saf1| Sari Fluor

17



86 - 104 cm

p96| Jumbo Flowers

**katia**





FLY  
JUST  
HANGIN OUT



7  
62 - 80 cm  
pm3| Panama Stripes Black



8  
62 - 80 cm  
pm3| Panama Stripes Black

22



KATIAFABRICS



29  
116 - 152 cm  
ssm3| Just Hanging Out  
Melange



6  
62 - 80 cm  
p97| Just Hangin Out

**katia**

23

FLY

TULUM  
MÉXICO



14



86 - 104 cm

p98| Tulum Fruits +  
pas16| Poplin A. Solid +  
pas12| Poplin A. Solid +  
pas9| Poplin A. Solid +  
pa1| Poplin A. White

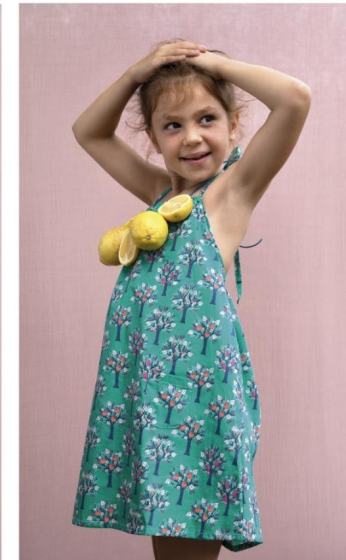
15



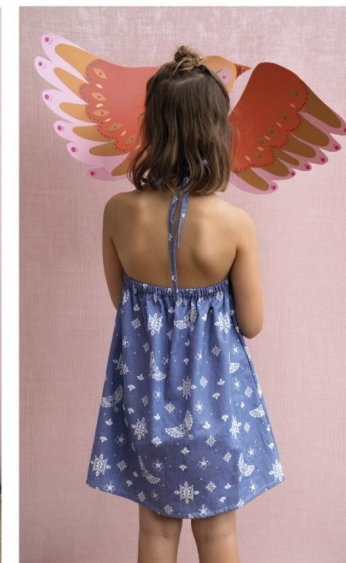
86 - 104 cm

p98| Tulum Fruits

24



KATIAFABRICS



27



116 - 128 cm

p99 Tulum Trees  
d13| Tulum Denim

25

**katia**



FLY

HEALTHY FLY



6



62 - 80 cm  
d14j Healthy Fly  
Squares Denim

8



62 - 80 cm  
b1l Bambula

3



62 - 80 cm  
j45j Healthy Bananas

4



62 - 80 cm  
j013j Jersey Solid Color



KATIA FABRICS

14



116 - 128 cm

p100l Healthy Fly +  
pas12l Poplin A. Solid +  
pas13l Poplin A. Solid +  
pas15l Poplin A. Solid +  
pa1l Poplin A. White

31



116 - 128 cm

j015j Jersey Solid Color

32



116 - 128 cm

p100l Healthy Fly

16



86 - 104 cm

p101l Healthy Mirtlos

17



86 - 104 cm

pas13l Poplin A. Solid

**Katia**

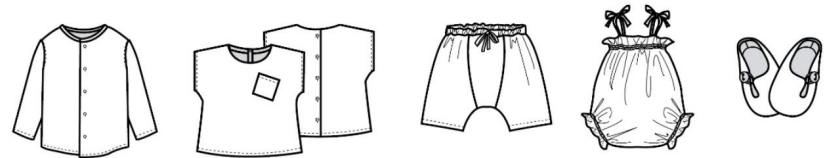




**BABY** (62 cm - 68 cm - 74 cm - 80 cm)

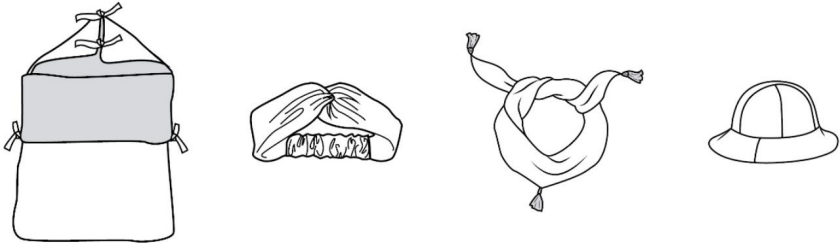


- 1 Vestido/ Dress    2 Vestido/ Dress    3 Vestido bolsillos/ Dress with pockets    4 Bragueta / Knickers    5 Mono / Romper



- 6 Camisa Manga Larga/ Long Sleeve Shirt    7 Camiseta manga corta / Short sleeve T-Shirt    8 Pantalón / Trousers    9 Mono / Romper    10 Zapatitos / Shoes

**ACCESSORIES**



- 11 Saco / Sack    12 Turbante / Turban    13 Pañuelo / Foulard    14 Sombrero / Hat

**NIVELES DE COSTURA / SEWING SKILLS LEVELS**



Debutante / Beginner



Intermedio / Intermediate

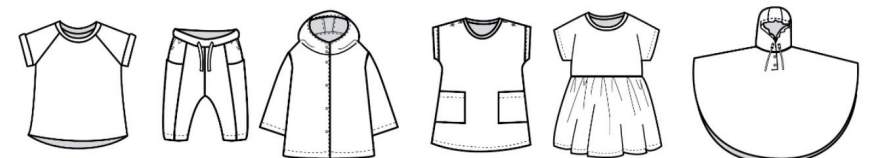


Avanzado / Advanced

**LITTLE** (86 cm - 92 cm - 98 cm - 104 cm)

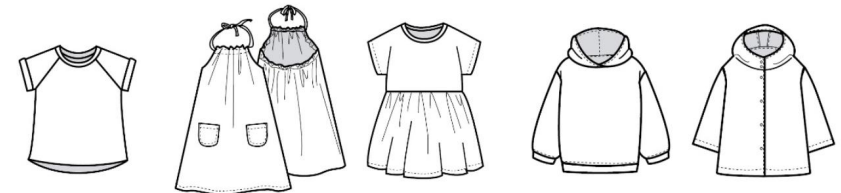


- 15 Vestido/ Dress    16 Top Volantes / Top with frills    17 Shorts / Shorts    18 Vestido capucha / Dress with hoodie    19 Vestido/ Dress    20 Sudadera/ Sweatshirt

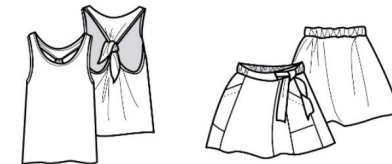


- 21 Camiseta manga corta / Short sleeve T-Shirt    22 Pantalón / Trousers    23 Chubasquero / Raincoat    24 Vestido/ Dress    25 Vestido/ Dress    33 Capa impermeable / Waterproof Cape

**KIDS** (116 cm - 128 cm - 140 cm - 152 cm)



- 26 Camiseta manga corta / Short sleeve T-Shirt    27 Vestido/ Dress    28 Vestido/ Dress    29 Sudadera/ Sweatshirt    30 Chubasquero / Raincoat



- 31 Camiseta con nudo / T-Shirt with knot    32 Falda / Skirt

## INSTRUCCIONES GENERALES / GENERAL INSTRUCTIONS

### ESPAÑOL

Se recomienda la lectura de estas instrucciones generales antes de iniciar cualquier modelo de la revista.

**Elección de la talla:** Las tallas de los patrones vienen indicadas en relación a la altura del niño. En las tablas de medidas podrás encontrar la altura, la edad y el resto de medidas que facilitarán la elección de la talla más adecuada. La toma de medidas se hará sobre ropa interior para poder comparar posteriormente con la tabla de tallas. Las medidas deben tomarse de pie y en una postura relajada, dejando caer los brazos a los lados.

**Utilización del suplemento desplegable:** Quita cuidadosamente las grapas que sujetan el suplemento a las páginas centrales. En las instrucciones de cada modelo se indica en qué cara del suplemento se encuentran dibujados los patrones, el color correspondiente al modelo y el trazo que corresponde a cada talla. En las instrucciones de costura se incluyen unas miniaturas, con los números y la descripción de las piezas que forman el modelo, para facilitar su localización en el suplemento de patrones. También se indica el número de veces a cortar cada pieza. Al calcar los patrones con papel de seda, hay que incluir todas las marcas que aparecen (dirección del hilo, aplomos, posición de ojales o botones, anotaciones, etc.). Los patrones incluyen todos los márgenes de costura (1 cm), así como los dobladillos.

**Corte:** Corta exactamente por las líneas del patrón, los márgenes de costura y los dobladillos ya se incluyen. Distribuye las piezas sobre la tela respetando la dirección del hilo. La dirección del hilo es el sentido longitudinal de la pieza del tejido. En los patrones, la dirección del hilo se indica con una línea acabada en puntas de flecha. Al distribuir las piezas en la tela, la línea de la dirección del hilo debe ir paralela al sentido longitudinal (orillos) de la tela.

El plano de corte muestra la distribución de las piezas del patrón sobre la tela. El canto de la tela doblada está marcado con una línea discontinua. La tela se doblará en sentido longitudinal (largo de la pieza). Las piezas a cortar con el símbolo del patrón lomo/tela doble, deben disponerse sobre el canto de la doblez de la tela para que salgan enteras. Para las piezas a cortar en dos unidades, es necesario disponer la tela doblada, por ejemplo, mangas y delanteros. En las piezas que se indique cortar una unidad se cortará solo una capa de tejido, por ejemplo, bolsillos. En el caso de estampados con dirección, hay que tener en cuenta que los motivos o dibujos queden de pie. Antes de cortar, asegúrate de que caben todas las piezas en la dirección del hilo correspondiente y en el número de piezas a cortar que indican las instrucciones. Recuerda marcar los aplomos que aparecen en el patrón con pequeñas marcas en la tela. Las entretelas deben cortarse con el mismo margen de costura que las piezas principales.

**Tejidos y materiales:** Las indicaciones de tela necesarias se basan en anchos de tejido de 145 cm. Si se utiliza otro ancho de género, la cantidad indicada varía. Antes de cortar, es necesario tratar las telas con vapor o lavarlas para evitar que encojan. El artículo impermeable waterproof es de base popelín con un laminado de poliuretano que se le aplica para su impermeabilización y hacerlo repelente al agua. Por las características técnicas del artículo waterproof no debe plancharse ni debe secarse expuesto al sol para no deteriorar la capa externa de Poliuretano. Ya que el tejido waterproof no se puede planchar, las piezas a reforzar se entretelarán con popelín de algodón con una costura en el borde cada pieza. Junto a las instrucciones de cada modelo se indican los materiales necesarios. Para los tejidos de punto pueden ser necesarias agujas específicas para coser punto, así como una aguja doble para confeccionar los dobladillos y respetar la elasticidad del tejido. Las cremalleras se pueden cortar a la medida en el caso de no encontrar la longitud indicada. Las cremalleras invisibles se cosen dejando un poco de margen (2cm), en la parte inferior.

**Confección:** Se recomienda leer detenidamente las instrucciones de costura antes de empezar cada modelo. Aunque no se mencione explícitamente, hay que rematar las costuras con zigzag o remalladora a medida que se va cosiendo la prenda. No es necesario rematar las costuras interiores en las prendas que van forradas. En los tejidos de punto, las costuras se realizan con puntada elástica de la máquina de coser y se puyen con puntada elástica o zigzag de la máquina de coser o si tienes puedes usar overlock o remalladora. El derecho de la tela es la parte "bonita" y queda hacia fuera de la prenda, a la hora de encargar los derechos hay que poner una pieza de tela sobre el lado derecho de otra pieza de tela. Los márgenes de los dobladillos están indicados con unos aplomos en el patrón. Para un mejor acabado, plancha cada costura, corta los hilos sobrantes y repasa toda la prenda cuando esté acabada.

### ENGLISH

It is recommended that you read these general instructions before starting any magazine model.

**Choosing the size:** The pattern sizes are indicated in relation to the height of the child. You can find the height, age and other measurements that will help determine the correct size to make on the measurement chart. Measurements are taken over underwear so they can be compared to the size chart afterwards. They are also taken whilst the individual is standing in a relaxed posture with the arms dropping down at the sides.

**Using the removable supplement:** Carefully remove the staples that hold down the supplement at the central pages. The instructions for each model indicate which page of the supplement you can find the pattern graphs, the colour corresponding to the model and the diagram for each size. The sewing instructions include thumbnails with the numbers and the description of the pieces that make up the model to facilitate their location in the pattern supplement. The number of times a piece needs to be cut out is also indicated. When tracing the pattern pieces onto paper, all the pattern markings must be included (grain line, notches, buttonholes and button positioning, comments, etc.). All the seam allowances (3/8" / 1 cm) and the hem allowances are already included on the pattern pieces.

**Cutting:** Cut exactly along the pattern lines since the seam and hem allowances are already included on the pattern pieces. Distribute the pieces on top of the fabric with the grain line positioned in the right direction. The direction of the straight grain is longitudinal and runs parallel to the fabric's selvedge. The grain line direction is indicated on the pattern pieces by a line with arrow points at each end. When placing the pattern pieces on the fabric the grain line should be parallel with the selvedge edge. The cutting plan shows the distribution of the pattern pieces on the fabric. The folded edge is represented by a dotted line. The fabric is folded longitudinally. The pieces to be cut on the fold have a line along the side that must be placed along the folded edge of the fabric. Therefore, the piece comes out whole after it has been cut out. For pattern pieces marked with instructions to be cut out twice, like sleeves or fronts, it is necessary to use folded double fabric. For pieces marked with instructions to cut out one piece, like pockets, use a single layer of fabric. When using directional prints, keep in mind that the motifs or design must be facing upright. Before cutting, ensure that all the pattern pieces and the total number of pieces to be cut out in each piece, as indicated in the instructions, fit in the direction of the corresponding grain line. Remember to mark the notches shown on the pattern pieces with small marks or notches on the fabric. The interlining should be cut out with the same seam allowances as the main fabric pieces.

**Fabric & materials:** The fabric quantities given are for fabric widths measuring 145 cm wide. If you use a different width the required quantity will vary. Before cutting, it is necessary to wash or steam the fabric to avoid shrinkage. The waterproof fabric has a poplin base with a laminated Polyurethane surface which makes it water repellent. Due to the technical characteristics of this water repellent article, it must not be ironed or dried in direct sunlight to avoid the deterioration of the external Polyurethane layer. Since the waterproof fabric cannot be ironed, the pieces which require reinforcing are interlined using the poplin fabric with a seam at the edge of each piece. The instructions for each model include a list of the materials you will need. For projects using jersey it may be necessary to use a special sewing needle for knit fabrics, like a twin needle to sew the hems and maintain the fabric elasticity. Zips can be cut to size if the exact length required cannot be found. Invisible zips are sewn with a small margin (2 cm) along the lower part.

**Construction:** It is recommended that you carefully read all the sewing instructions before starting any model. Although it is not explicitly mentioned, all raw seam edges should be finished with a zig-zag or overlock stitch whilst sewing the garment. It is not necessary to finish the interior seams of lined garments. For knit fabrics, sew the seams with an elastic stitch on a sewing machine and finish the raw seam edges with a zig-zag stitch using the sewing machine or overlock the edges with an overlock machine. The right side of the fabric is the "nice" side and is on the outside of the garment. To match two fabric pieces together with the right sides facing, place one piece of fabric on top of the right side of the other piece of fabric. The hem margins are indicated on the pattern pieces by notches. For a better finished result: press each seam, trim the loose ends of yarn and check over the whole garment when finished.

## TOMA DE MEDIDAS / TAKING MEASUREMENTS

### ESP

- 1. Altura:** Con el niño de pie con la espalda y los talones apoyados contra la pared, marcar el punto más alto de la cabeza con la ayuda de un objeto recto. La distancia desde el suelo hasta la marca será la altura.
- 2. Contorno de pecho:** Medir el perímetro del pecho, rodeando con la cinta la parte más ancha, pasando sobre el pecho y los omóplatos.
- 3. Contorno de cintura:** Medir el perímetro rodeando la cintura con la cinta métrica.
- 4. Contorno de cadera:** Medir el perímetro de la cadera, pasando por la parte más prominente del trasero.
- 5. Largo de brazo:** Medir la distancia desde el hombro hasta la muñeca con el brazo ligeramente flexionado.
- 6. Interior de pierna:** Medir la distancia desde la entrepierna hasta el suelo, con el niño de pie y las piernas ligeramente separadas.
- 7. Exterior de pierna:** Medir la distancia desde la cintura hasta los talones.

### ENG

- 1. Height:** With the child standing up and his or her back and heels touching the wall, use a straight object to mark the highest point of the head. The distance from the floor to the mark will be the height.
- 2. Chest:** Measure the chest circumference by passing the tape measure around the widest point, over the chest and the shoulder blades.
- 3. Waist:** Pass the tape measure around the waist circumference.
- 4. Hips:** Measure the hip circumference by passing the tape measure around the widest part of the hips.
- 5. Arm length:** Measure the distance from the shoulder to the wrist with the arm slightly bent.
- 6. Inside leg:** With the child standing up and his or her legs slightly open, measure the distance from the crotch to the floor.
- 7. Outside leg:** Measure the distance from the waistline to the heel.

ESP: Las medidas del cuadro se refieren a las medidas del cuerpo y no a las dimensiones de la prenda.

ENG: The measurements on the size chart refer to the body measurements not the garment dimensions.

### Baby

	1-3 M	3-6 M	6-9 M	9-12 M
1 - cm	62	68	74	80
2 - cm	43	45	47	49
3 - cm	44	46	48	49
4 - cm	45	47	49	51
5 - cm	22	24	26	28
6 - cm	21	24	27	30

\*M = Meses / Months

### Little

	12-18 M	18-24 M	2-3 Y	3-4 Y
1 - cm	86	92	98	104
2 - cm	51	53	55	56
3 - cm	50	51	52	53
4 - cm	53	55	57	58
5 - cm	30	32	34	36
6 - cm	33,5	37	43,5	47

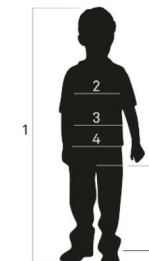
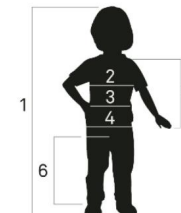
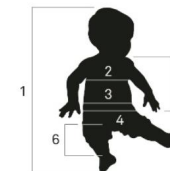
\*M = Meses / Months

\*Y = Años / Years

### Kid

	5-6 Y	7-8 Y	9-10 Y	11-12 Y
1 - cm	116	128	140	152
2 - cm	62	68	73	78
3 - cm	58	61	64	67
4 - cm	64	70	76	82
5 - cm	50	60	66	72

\*Y = Años / Years





27 Instructions Sample



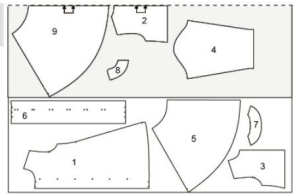
Hoja C Naranja / Sheet C Orange

Metros usados / Metras required:  
120 cm-125 cm-135 cm-145 cm  
Popelin / Poplin Katia Fabrics

86 cm  
92 cm  
98 cm  
104 cm

Revés tejido / Reverse of the fabric  
Derecho tejido / Face of the fabric

Plano de corte / Cutting plan:

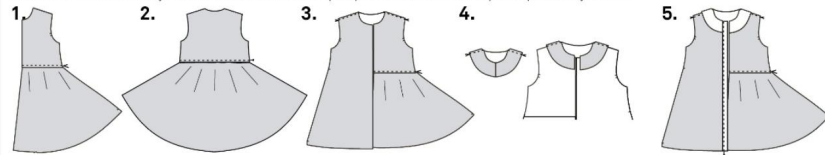


Piezas / Pieces	Cortar/Cut
1, Delantero/Front	1
2, Trasero/Back	1
3, Delantero/Front	1
4, Manga/Sleeve	2
5, Delantero falda / Front skirt	1
6, Tapeta / Placket	1
7, Vista/Facing	1
8, Vista/Facing	2
9, Trasero falda / Back skirt	1

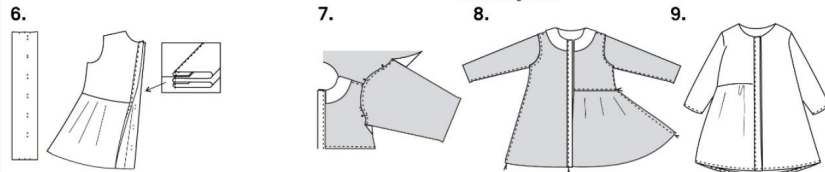
Entratale / Interlining	Cortar/Cut
7, Vista/Facing	1
8, Vista/Facing	2

Materiales / Materials:  
ESP: Botones coco 1,16 (10 mm): 6 unidades; Entreteja fino termoadhesivo: 23 cm en ancho 90 cm  
ENG: 6 x cocoon buttons: size 16L (10 mm) Lightweight thermo-adhesive interlining: 9 7/8" (25 cm) x 35 3/8" (90 cm) wide

ESP: Nota: el delantero del vestido es asimétrico, uno de los lados es una pieza entera, el otro está formado por dos piezas, cuerpo y falda.  
ENG: Note: the front of the dress is asymmetrical. One of the sides is a complete piece and the other is made up of two pieces: body and skirt.



1. ESP: Unir y coser el cuerpo delantero con la falda, derecho con derecho del tejido. ENG: Join and sew the front body to the skirt with the right sides of the fabric matching together.  
2. ESP: Unir y coser el cuerpo y la falda trasera por el derecho del tejido. ENG: Join and sew the back body and skirt with the right sides of the fabric facing together.  
3. ESP: Encarar los delanteros y el trasero del vestido. Unir y coser la parte de los hombros. ENG: Match the fronts and the back of the dress together with the right sides facing each other. Join and sew the shoulders.  
4. ESP: Entretejar las vistas del vestido. Unir las vistas del delantero y del trasero por los hombros, encarando los derechos. Aplicar las vistas por todo el contorno del escote y coser derecho con derecho del tejido. Volver las vistas hacia el interior del cuerpo. ENG: Attach the interfacing to the neckline facing pieces. Join the front and back facing pieces together, with the right sides facing together, and sew the shoulders. Attach the facings around the neckline edge, with the right sides of the fabric facing together, and sew. Turn the neckline facing towards the inside of the garment.  
5. ESP: Confeccionar la tapeta de botones en el lado que va entero del delantero. Doblar y planchar la costura y el ancho de tapeta, introducir la vista en el interior y sujetar con un pespunte. ENG: Make the front band on the side of the front made up of one piece: Fold and iron the seam edge and the band width. Turn to the inside and stitch in place.



6. ESP: Preparar la sopata, que es una tapeta con ojales de botonadura ocultos, la sopata forma un doble canto. Marcar la posición de los ojales, planchar la costura del canto del cuello 1 cm hacia el revés de la tela, para que quede pulido. Doblar y planchar por donde marcan los plomos de manera que forme un doble canto. Coser a 1 cm en el delantero (sujetando la vista) fijar la doblez con un hilván para sujetar la parte interior (costura a 1 cm) con un pespunte que se verá desde el exterior. ENG: Prepare the concealed buttonhole placket which forms part of the double edge. Mark the position of the buttonholes and iron 3/8" (1 cm) of the upper neckline edge inwards to neaten the edge. Fold and iron along the pattern markings so it forms a double layer. Match the button placket to the front band with the right sides facing together (button placket on inside). Baste the inner button placket and the upper band together (with a 3/8" / 1 cm seam allowance) and top stitch on the right side at 3/8" (1 cm) on the front (sewing through all the fabric layers).  
7. ESP: Montar las mangas con el cuerpo haciendo coincidir los plomos, derecho contra derecho del tejido. Sujetar con alfileres y coser. ENG: Mount the sleeves: match the pattern notches together with the right sides of the fabric facing together. Pin and sew.  
8. ESP: Unir y coser los laterales del vestido y de las mangas, encarando los derechos. ENG: Join and sew the side seams and the underarm seams with the right sides of the fabric facing together.  
9. ESP: Confeccionar los ojales y coser los botones del delantero. Para terminar, confeccionar el dobladillo inferior de la falda y de las mangas. ENG: Make the buttonholes on the inner front button placket. To finish, make the cuff hems and the hem along the lower edge of the skirt section.



FLY

DREAMCATCHER

11



86 - 104 cm  
j52l Happy Dreams + mg7l Dreamcatcher

7



62 - 80 cm  
j52l Happy Dreams

8



62 - 80 cm  
mg7l Dreamcatcher

FLY

MAGIC IS IN  
THE AIR



29



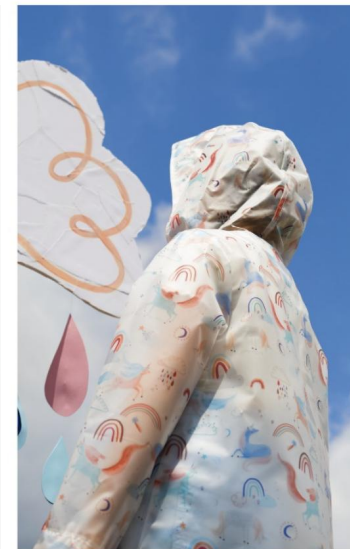
116 - 152 cm

esp01 Magic is in the air Sweat

36



KATIAFABRICS



25



86 - 104 cm

m121 Magic Cloud

30



116 - 152 cm

t31 Unicorn is in the air

**katia**

37



FLY

SEALS  
BALLOON



9



62 - 80 cm  
p103| Seals Balloon

10



62 - 80 cm  
p103| Seals Balloon +  
pas4| Poplin A. Solid



KATIAFABRICS

25



86 - 104 cm  
jp14| Seals Balloon  
Dress Panel

12



62 - 80  
mg6| Algae Balloon

2



62 - 80 cm  
mg6| Algae Balloon

4



62 - 80 cm  
mg6| Algae Balloon



FLY

HANDS & FEET

14



86 - 104 cm

j511 Animal Foot Print + pas111 Poplin A. Solid + pas121 Poplin A. Solid + pas151 Poplin A. Solid + pa11 Poplin A. White

21



86 - 104 cm

j531 Animal Hand

22



86 - 104 cm

j511 Animal Foot Print

7



62 - 80 cm

j531 Animal Hand

8



62 - 80 cm

j511 Animal Foot Print

40



KATIAFABRICS

20



86-104 cm

ss141 Animal Foot



23



86 - 104 cm

t41 Sunshine



**katia**

41





FLY  
FLY WITH ME

25  
86 - 104 cm  
m9| Fly with me  
Mousseline



KATIAFABRICS

13  
86 - 104 cm  
sag1| Sari Gold



19  
86 - 104 cm  
sag1| Sari Gold



19  
86 - 104 cm  
pww1| Plumeti Vintage  
White



25  
86 - 104 cm  
v3| Vichy Pink



FLY

PLAY & FLY



21



86 - 104 cm  
js54| Don't forget to fly Claim

22



86 - 104 cm  
ssm4| Don't forget to play sledges

44



KATIAFABRICS

18



86 - 104 cm

ssm4| Don't forget to play sledges + js17| Jersey Solid Color



26



106 - 152 cm

jm12| Don't forget to play

**katia**



FABRICS

<b>JUNGLE HEROES</b>			<b>CONTEMPORARY BIRDS</b>			<b>EARTH &amp; DREAMS</b>		
J55 5	M7 28	P104 7	J46 31	SS15 32	M11 24	P91 32	P92 6	
<b>WILD &amp; FREE</b>		<b>ALADDIN</b>		<b>FLYING KANGAROOS</b>		<b>JUST HANGING OUT</b>		
J44 5	SS11 18	J47 3	P105 15	D11 1/10	P93 1	P94 9/10/14	P97 6	SSM3 29
<b>FLY &amp; SWIM WITH ME</b>			<b>JUMBO</b>			<b>SALINAS BIRDS</b>		
J48 8	P95 11/14	M8 9	J26 3	J49 2	P96 17	D12 15	P88 27	P89 32
<b>TULUM MEXICO</b>		<b>HEALTHY FLY</b>			<b>ICE CREAM WORLD</b>		<b>INTO THE RIVER</b>	
P98 14/15	P99 27	D13 27	P100 14/32	J45 3	P101 16	D14 6	SS13	J22
<b>MAGIC IS IN THE AIR</b>		<b>SEALS BALLOON</b>		<b>DREAMCATCHER</b>		<b>HIPPOS DIVING</b>		<b>FLY WITH ME</b>
P102	M12 25	P103 9/10	MG6 2/4/12	J52 /1/11	MG7 8/11	J24	M9 25	
<b>HAND &amp; FEET</b>			<b>PLAY &amp; FLY</b>			<b>PANAMA STRIPES</b>		
SS14 20	J51 7/21	J53 8/14/22	JM12 26	SSM4 18/22	J54 21	PM1 6	PM2 12/13/27	PM3 7/8
<b>TRANSLUCENT</b>			<b>PLUMETI VINTAGE</b>			<b>SARI GOLD</b>		<b>SARI FLUOR</b>
T1 30	T2 23,33	T3 30	T4 23	PVP1 19	PVP2 28	PWW1 19	SAG1 13/19	SAF1 13/16

DRESS PANELS

<b>SLUB JERSEY</b>			<b>SWEAT TOWEL</b>			<b>FLYING KANGAROOS</b>	
							JP8 3
SJ1	SJ2 12	SJ3	ST1 3/12	ST2 24	ST3 28/29		
<b>PLUMETI BICOLOR</b>		<b>BAMBULA</b>		<b>DENIM BASIC</b>		<b>FLY &amp; SWIM WITH ME</b>	
							JP9 7/8
PB1	PB2	PB3 1/4	B1 8	DB1 4/10/17			
<b>VICHY</b>							
V1	V2	V3 25	V4				
<b>JERSEY SOLID COLOR</b>							
JS1 6	JS2 31	JS3 4	JS4 6	JS5	JS6	JS7 23	JS8
JS9	JS10	JS11	JS12	JS13 4	JS14	JS15 31	JS17 8/18
<p>Todos nuestros estampados están realizados en rotativa excepto aquellos que, debido a la ilustración, necesitan ser realizados digitalmente.</p> <p>All our designs are made using rotary print except for those that, due to the illustration, need to be printed digitally.</p> <p>Digital prints: j48, j53, jp8, jp9, jp12, jp14, p93, p94, p95, p96, p102, p103, pvp1, pvp2, ssp1, ssp3, t1, t2, t3, t4.</p>							
<b>J = Jersey</b>		<b>JG = Jersey Gold</b>		<b>JM = Jersey Mélange</b>		<b>JS = Jersey Solid Color</b>	
<b>JP = Jersey Panel t-shirt</b>		<b>M = Mouseline</b>		<b>MG = Mouseline Gold</b>		<b>D = Denim</b>	
<b>P = Poplin</b>		<b>SS = Summer Sweet</b>		<b>SSM = Summer Sweet Mélange</b>		<b>SSP = Summer Sweet Panel</b>	
<b>PVP = Plumeti Vintage Print</b>		<b>PVW = Plumeti Vintage White</b>		<b>PB = Plumeti Bicolor</b>		<b>T = Translucent</b>	
<b>SG = Sari Gold</b>		<b>SF = Sari Fluor</b>		<b>PM = Panama Stripes</b>		<b>SJ = Slub Jersey</b>	
<b>ST = Sweat Towel</b>		<b>V = Vichy</b>		<b>B = Bambula</b>			
<b>WILD &amp; FREE</b>			<b>MAGIC IS IN THE AIR</b>			<b>SSP1</b>	
							SSP1 20
							JP12 25
							JP14 25
<b>WILD &amp; FREE</b>			<b>MAGIC IS IN THE AIR</b>			<b>SSP3</b>	
							SSP3 29
							JP12 25
							JP14 25

ARTICLE	REFERENCES FLY SS21	REFERENCES AQUA SS20 / ORIGINS AW20
JERSEY	14	14
JERSEY MELANGE	1	1
JERSEY PANEL	7	4
POPLIN	17	19
POPLIN PANEL	6	5
SUMMER SWEAT	4	7
SUMMER SWEAT MELANGE	2	1
DENIM	4	6
MOUSSELINE	5	4
MOUSSELINE GOLD	2	2
VICHY	4	4
EAT & SEW	1	1
FIBER FILL	1	1
JERSEY SOLID COLOR	16	14
PLUMETI BICOLOR	3	2

ARTICLE	REFERENCES FLY SS21	REFERENCES AQUA SS20 / ORIGINS AW20
DENIM BASIC	1	0
BAMBULA	1	0
PANAMA STRIPES	3	0
PLUMETI BICOLOR	3	0
PLUMETI VINTAGE PRINT	2	0
PLUMETI VINTAGE WHITE	1	0
POPLIN MERCERIZED	1	0
SARI FLUOR	1	0
SARI GOLD	1	0
SLUB JERSEY	3	0
SWEAT TOWEL	3	0
SUMMER SWEAT PANEL	3	0
TRANSLUCENT	4	0



ARTICLE	REFERENCES FLY SS21	REFERENCES AQUA SS20 / ORIGINS AW20
CANVAS	4	11
CANVAS ECRU	2	0
CANVAS GOLD	3	2
CANVAS SLIM	5	0
CANVAS SLIM PANEL	3	0
CANVAS SLIM WATERPROOF	2	0

**TOTAL ARTICLES**

FLY: 33 + 7 NEW AW20-21 = 40

AQUA / ORIGINS: 17

**TOTAL REFERENCES**

FLY: 132 + 34 NEW AW20-21 = 166

AQUA / ORIGINS: 98

**NEW ARTICLES AW20-21**

ARTICLE	REFERENCES FLY SS21	REFERENCES AQUA SS20 / ORIGINS AW20
POLIN ANTIBACTERIAN SOLID	12	0
POPLIN ANTIBACTERIAN WHITE	1	0
POPLIN ANTIBACTERIAN MASK PANELS	3	0
RUSTIC COTTON	6	0
RUSTIC COTTON SOLID	6	0
PADDED METALLIZED	3	0
PADDED SILVER PRINT	3	0

Prints  
& Clothes

**KATIA**  
FABRICS

Sewing Patterns  
Magazine

**katia**

www.katia.com  
EUR 9,95

**33 PATRONES**  
DESDE 1 MES A 12 AÑOS  
(62CM-152CM)

**33 PATTERNS**  
FROM 1 MONTH TO 12 YEARS  
(62CM-152CM)

**FLY**

SPRING / SUMMER



84-354079-7768-6

**katia**