



BOTHY THREADS

Unit 2b, Lakeland Business Park,
Lamplugh Road, Cockermouth, Cumbria CA13 0QT
Tel/Fax: 01900 828844

Web: www.bothythreads.com ♥ Email: info@bothythreads.com
facebook.com/bothythreads



2018

COLLECTION

Wildlife

During the last three decades, Sid and Rose Swalwell built Derwentwater Designs into one of the UK's leading sewing kit manufacturers. Bothy Threads took over their business interests from September 2017 and is proud to be able to take them forward, with Rose continuing her work as a designer.

Derwentwater Designs kits use Zweigart fabrics and a range of threads and wools to create Rose's enchanting images of the English Countryside and nature in all four seasons.

Bothy Threads now supplies a range of Zweigart fabrics, John James needles and Excel Edge Bexfield scissors.



CONTENTS	Page
Wildlife	2-4
Silken Long Stitch	5
Lanes Series	6-7
Long Stitch Lanes Series	8-9
Sunsets	10
Misty Mornings	11
Birds	12
Mackintosh Cross Stitch	13
Countryside	14
Creative Backstitch	15
Four Seasons	16
Seasons Panels	17
Seasons in Long Stitch	18-19
Flower Panels	20
Impressions	21
Samplers	22
Regional Samplers	23
Minuets	24-25
Dales Series	26-27
Village England	28
Coastal Britain	29
Longstitch	30
Butterfly Panel & Coasters	31
Christmas Cards	32-34
Long Stitch Cards	34
Greetings Cards	35
Scissors	36

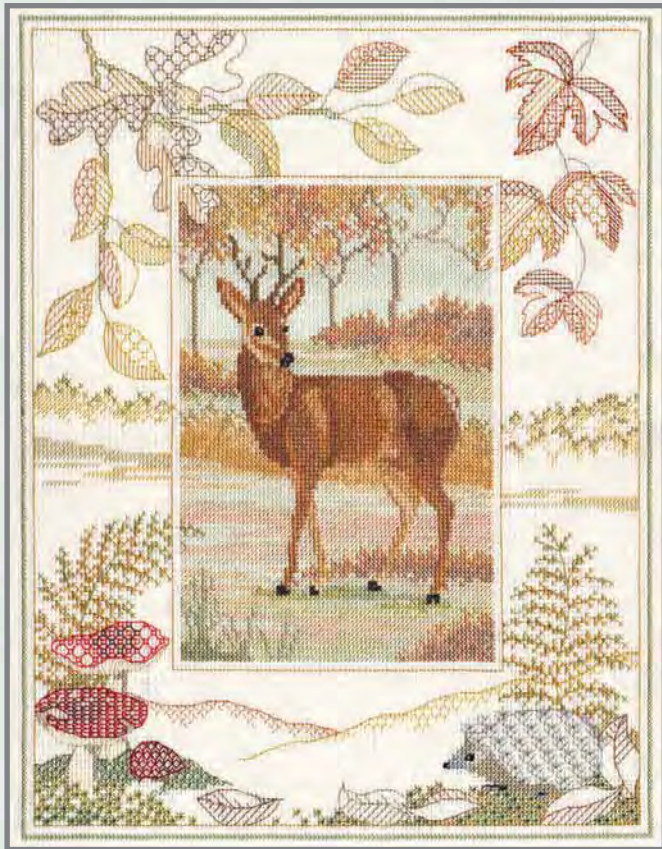
A range of designs by Rose Swalwell, the central panel is in cross stitch and the border in back stitch. On 14 count Aida.

All threads are pre-sorted and carded.

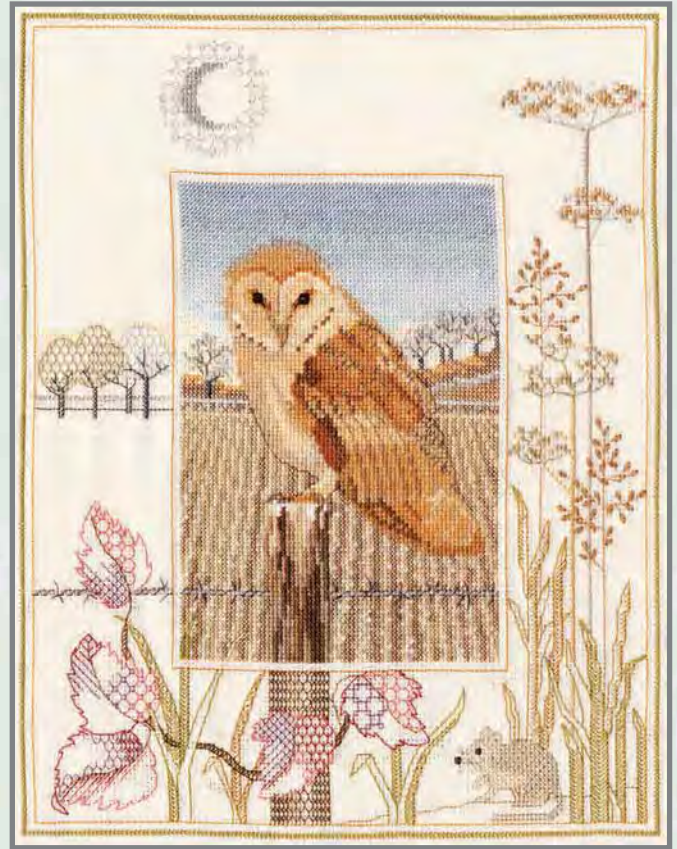
Design size 26.9cm x 34.2 cm (10.6" x 13.5").



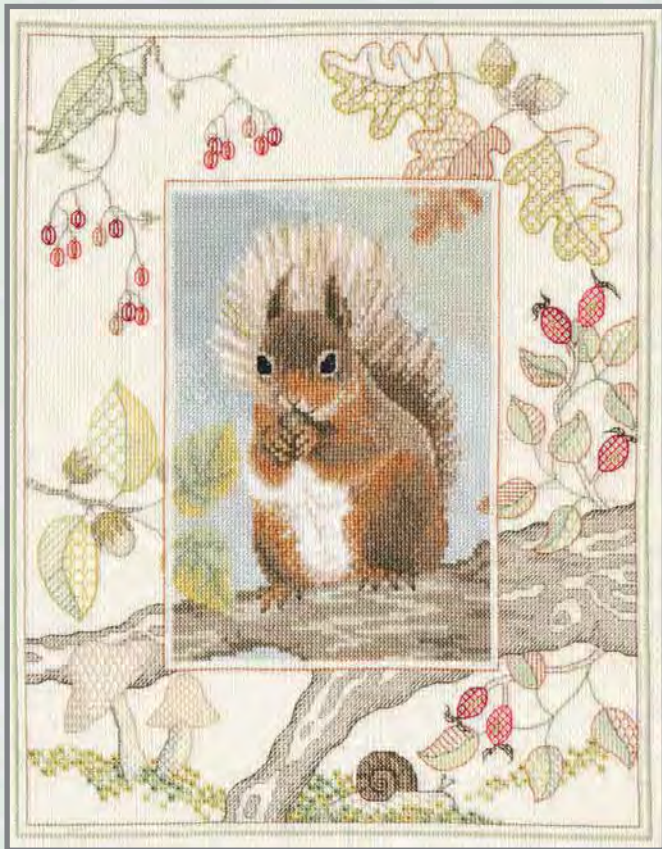
WIL1 Kingfisher



WIL2 Deer



WIL3 Barn Owl



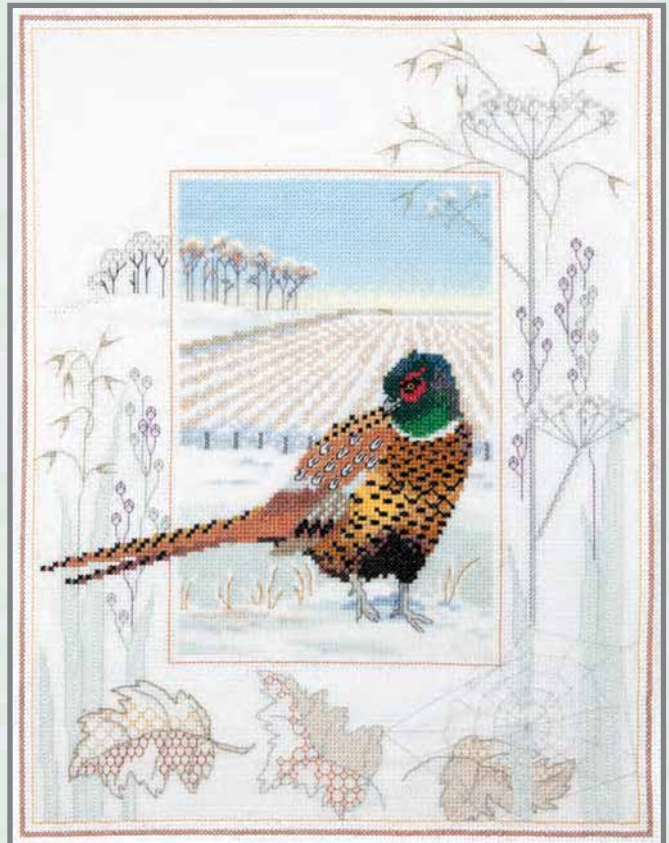
WIL4 Red Squirrel



WIL5 Hare



WIL6 Otter



WIL7 Pheasant



WIL8 Mallard



WIL9 Badger

Silken Long Stitch

A range of miniature designs on 22 count canvas worked with stranded cotton, the threads are pre-sorted and carded, design size 11cm x 11cm (4.3" x 4.3").



SLS1
Headland Cottages



SLS2
Beach Cove



SLS3
Boat Thro' Archway



SLS4
Fishermen's Cottages



SLS5
Bluebell Cottage



SLS6
Poppy Cottage



SLS7
Hollyhock Cottage



SLS8
Rambling Rose Cottage



SLS9
Courtyard Window



SLS10
Lavender Fields



SLS11
Aegean Arch



SLS12
Balustrade



SLS13
Tulips



SLS14
Camellias



SLS15
Wild Poppies



SLS16
Purple Anemones

The Lanes

A collection of cross stitch designs
by Rose Swalwell.



LAN01 Poppyfield Lane
34cm x 14cm (13.5" x 5.5")



LAN02 Bluebell Lane
34cm x 14cm (13.5" x 5.5")



LAN03 Willowbrook Lane
34cm x 14cm (13.5" x 5.5")



LAN04 October Lane
34cm x 14cm (13.5" x 5.5")



LAN05 Waterside Lane
31.5cm x 14.5cm (12.75" x 5.75")

Series

Worked on 14 count Aida the threads are all pre-sorted and carded.

LAN06 *Old Mill Lane*
31.5cm x 14.5cm (12.75" x 5.75")



LAN07 *Blossom Lane*
33cm x 14.5cm (13" x 5.75")



LAN08 *Holly Lane*
32.7cm x 14.2cm (12.9" x 5.6")



LAN09 *Foxglove Lane*
34.7cm x 14.9cm (13.6" x 5.9")

LAN10 *Summer Lane*
34.7cm x 14.9cm (13.6" x 5.9")



The Long Stitch Lane Series

A range of long stitch kits designed by Rose Swalwell using tapestry wool on 14 count printed canvas.
Design size 28cm x 12.5cm (11" x 4.75").



LLBK Becks Lane



LLWD Woodland Lane



LLSC Church Lane

LLSR Rose Lane



LLSL Snowy Lane



LLHC Hollyhock Lane



LLBU Bluebell Wood Lane



Sunsets

A range of cross stitch designs by Rose Swalwell all worked on 16 count Aida, the designs are 20cm x 14cm (7.75" x 5.5").



TWL01 *Waters Edge*



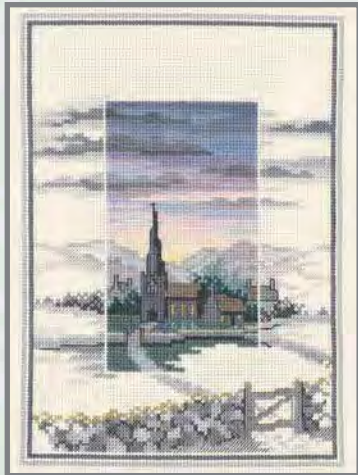
TWL02 *Pinetree Bay*



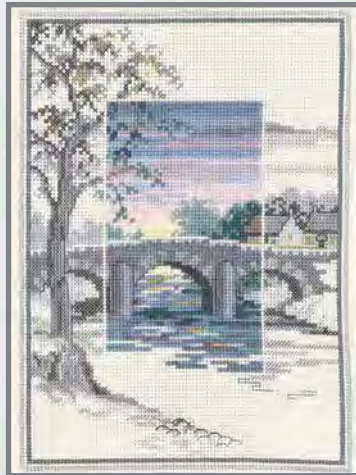
TWL03 *Low Tide*



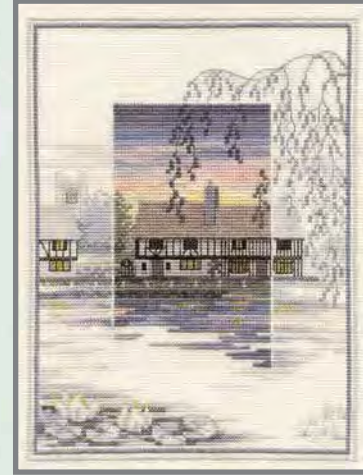
TWL04 *Safe Haven*



TWL05 *Evensong*



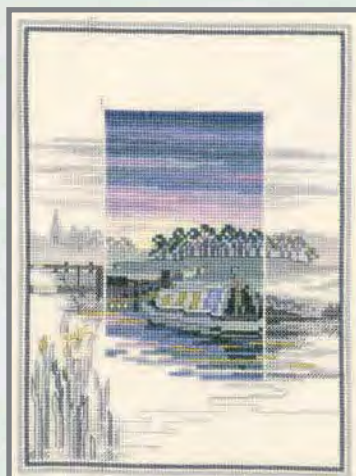
TWL06 *The Old Bridge*



TWL07 *Lily Pond Cottage*



TWL08 *Water Mill*



TWL09 *Village Locks*



TWL10 *Canal Wharf*

Misty Mornings

Designed by Rose Swalwell on 14 count Aida.

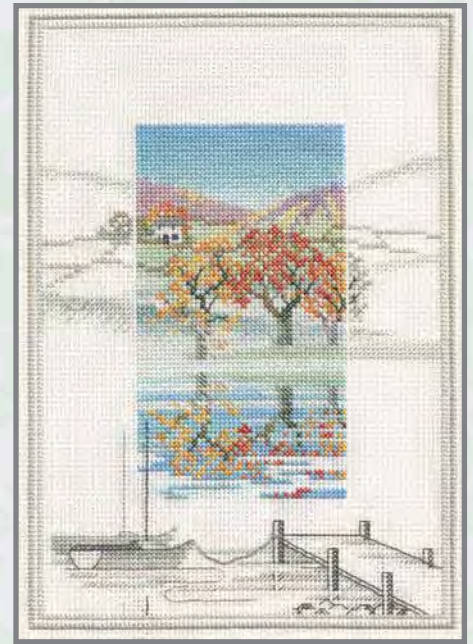
All threads are pre-sorted and carded and the design size is 25cm x 17.2cm. (9.8" x 6.7").



MM1 Winter Tree



MM2 Winter Bridge



MM3 The Boat Landings



MM4 Castle Crag



MM5 Frosty Deer



MM6 Snowy Sheep

Birds

Counted cross stitch designs by Rose Swalwell on 14 count Aida. All threads are pre-sorted and carded.



PN01 Penguin & Chicks
14cm x 15.5cm (5.5"x 6")
Metallic Thread and Stranded Cotton.



PN03 Puffin
14cm x 15.5cm (5.5"x 6")
Metallic Thread and Stranded Cotton.



BB01 Blue Tits & Seed Heads
24cm x 23cm (9.5" x 9.25")
Stranded Cotton, Perlé Cotton
and Metallic Thread.



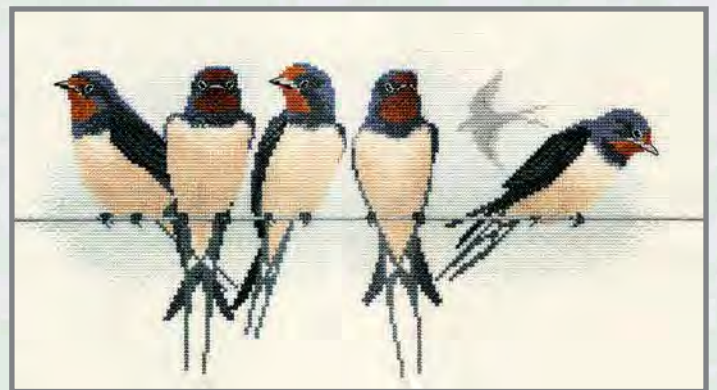
BB02 Chaffinches & Blossom
24cm x 23cm (9.5" x 9.25")
Stranded Cotton and Beads.



BB04 Goldfinches & Thistles
24cm x 23cm (9.5" x 9.25")
Metallic Thread, Beads
and Stranded Cotton.



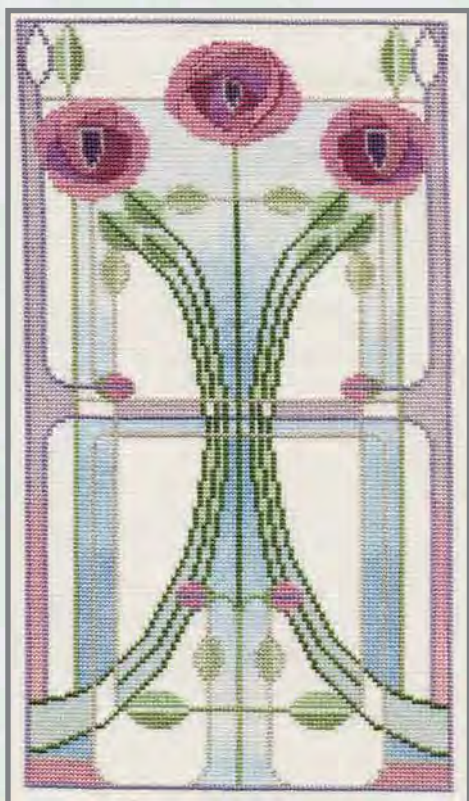
BB03 Waders
30cm x 11cm (11.75" x 4.25")
Metallic Thread, Beads and Stranded Cotton



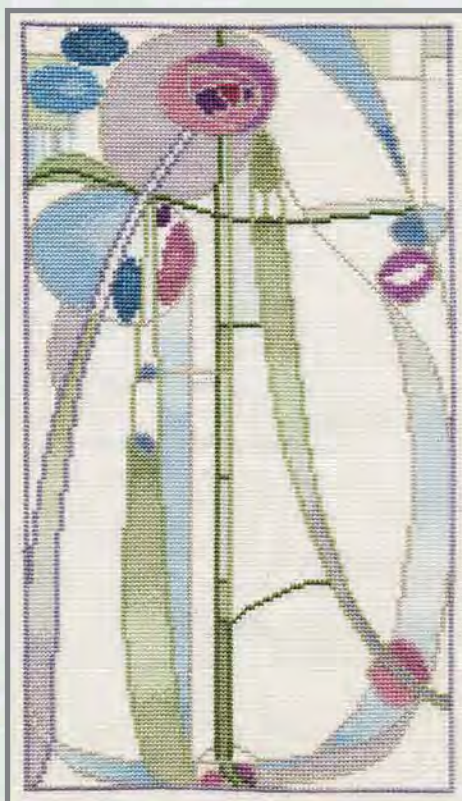
BB05 Swallows
36cm x 18cm (14" x 7")
Metallic Thread and Stranded Cotton.

Mackintosh Cross Stitch

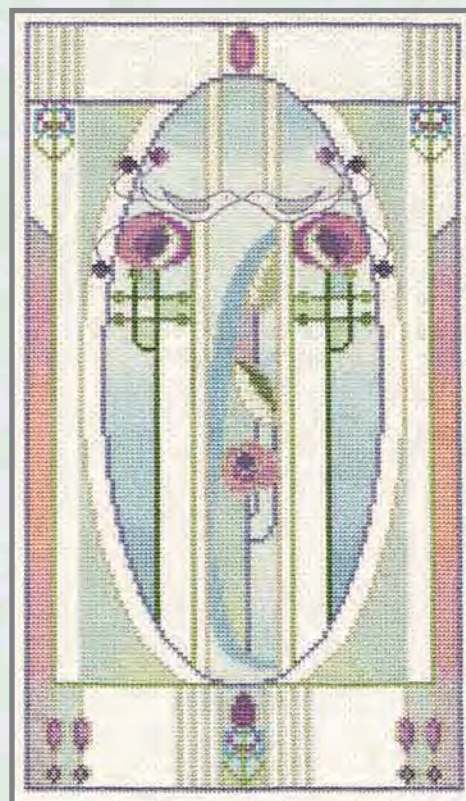
Designs by Rose Swalwell, based on the work of Margaret Macdonald and Charles Rennie Mackintosh.
The designs are all worked on 16 count Aida, the threads are pre-sorted and carded.



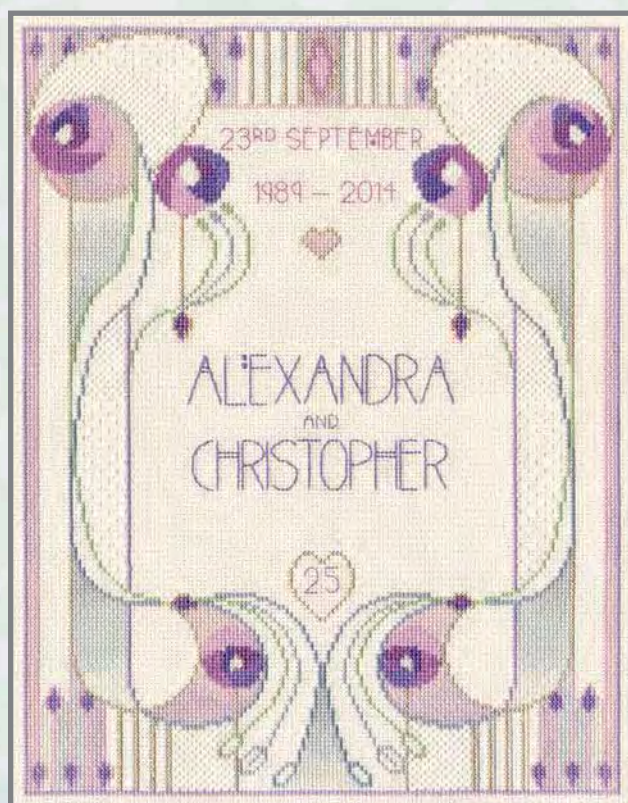
MKP1 Rose Bouquet
15cm x 28cm (6" x 11")



MKP2 Rose Boudoir
15cm x 28cm (6" x 11")



MKP3 Love Birds
15cm x 28cm (6" x 11")



MKP4 Wedding or Anniversary Sampler
22.5cm x 28cm (8.75" x 11")



MKP5 Oriental Rose
15cm x 28cm (6" x 11")

Countryside

A range of designs by Rose Swalwell on 16 count Aida. All threads are pre-sorted and carded.
The size of all designs are 20cm x 17cm (7.75" x 6.75").



CON01 Cragside Farm



CON03 High Hill Farm



CON04 Low Meadow Farm



CON06 Winterbourne Farm



CON07 Appletree Farm



CON08 Lakeside Farm

Creative Backstitch

The Harbour

Sets of three coloured back stitch style designs by Rose Swalwell which can be framed individually or mounted together to make one complete scene. The designs are all on 16 count Aida.

Heather Hills

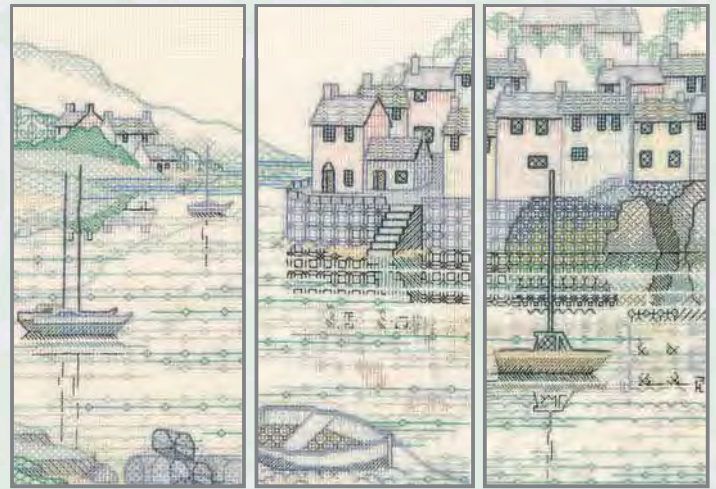


CB07 Mountain Pines 10cm x 22cm (4" x 8.66")
 CB08 Bracken Cottages 10cm x 22cm (4" x 8.66")
 CB09 Brackenrigg Castle 10cm x 22cm (4" x 8.66")



CB10 Dancing Tulips
 25.5cm x 19cm (10" x 7.5")

CB11 The Boat House
 33.5cm x 19cm (13.75" x 7.5")

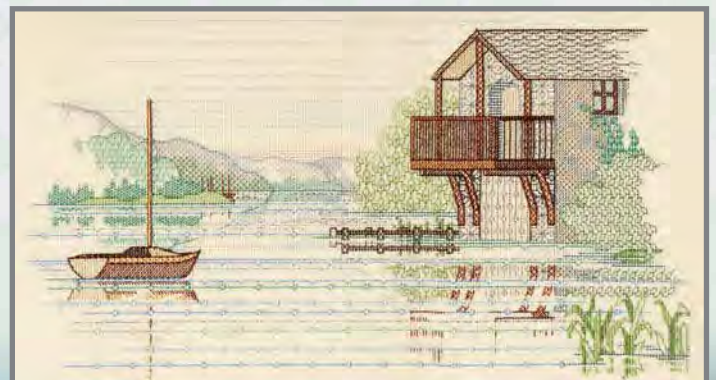


CB01 Crab Pot Cove 10cm x 21cm (4" x 8.25")
 CB02 Cobble Quay 10cm x 21cm (4" x 8.25")
 CB03 Harbour View 10cm x 21cm (4" x 8.25")

The Village



CB04 Village Shop 10cm x 22cm (4" x 8.66")
 CB05 Bridge Street 10cm x 22cm (4" x 8.66")
 CB06 Church Walk 10cm x 22cm (4" x 8.66")



Four Seasons

Four designs by Rose Swalwell, in 16 count Aida to illustrate the seasons with lettering in many languages around the outside. The individual instructions tell you which languages they are. The threads are pre-sorted and carded and the design size is 16.5cm x 16.5cm (6.5" x 6.5").



FS01 Spring



FS02 Summer



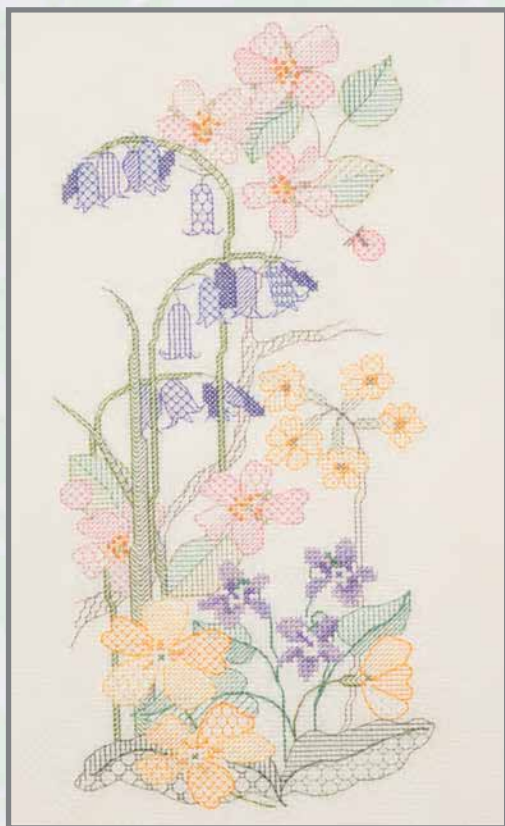
FS03 Autumn



FS04 Winter

Seasons Panels

A series of four designs by Rose Swalwell, worked in cross stitch and back stitch in 14 count Aida. The threads are pre-sorted and carded and the design size is 13cm x 29cm (5 1/8" x 11.5").



SP01 Spring



SP02 Summer



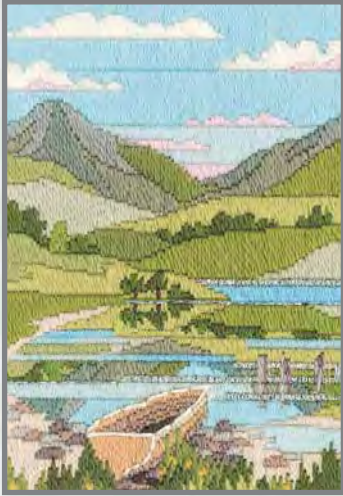
SP03 Autumn



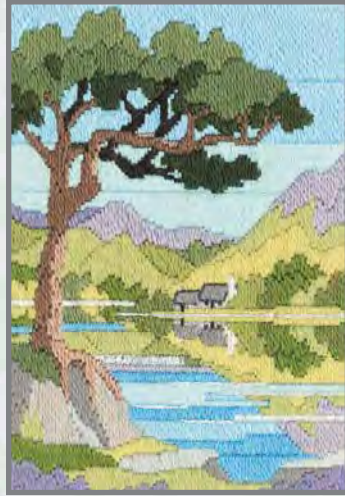
SP04 Winter

Seasons in Long Stitch

A range of long stitch kits designed by Rose Swalwell using tapestry wool on 14 count printed canvas.
Design size 17cm x 24cm (6.7 x 9.5").



MLS1 Mountain Spring



MLS2 Mountain Summer



MLS3 Mountain Autumn



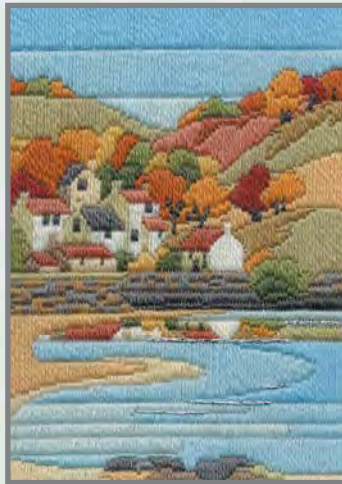
MLS4 Mountain Winter



MLS5 Coastal Spring



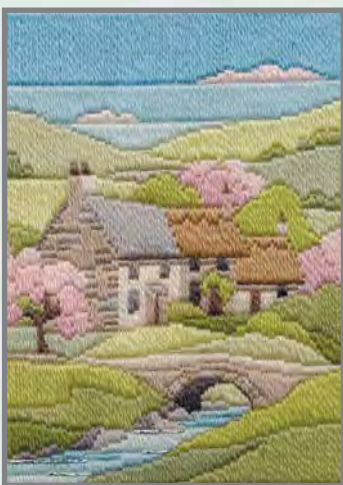
MLS6 Coastal Summer



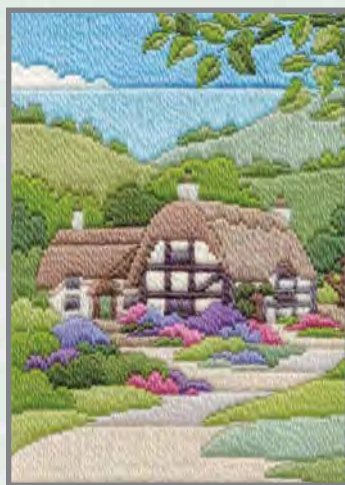
MLS7 Coastal Autumn



MLS8 Coastal Winter



MLS9 Spring Cottage



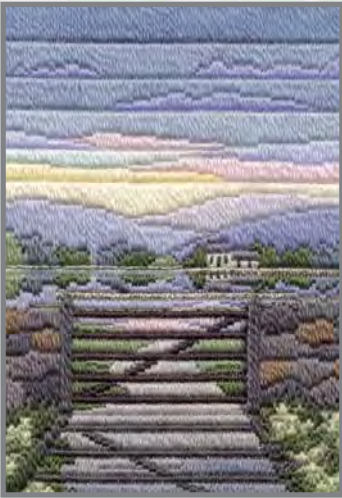
MLS10 Summer Cottage



MLS11 Autumn Cottage



MLS12 Winter Cottage



MLS13 Spring Evening



MLS14 Summer Evening



MLS15 Autumn Evening



MLS16 Winter Evening



MLS17 Spring Garden



MLS18 Summer Garden



MLS19 Autumn Garden



MLS20 Winter Garden



MLS21 Spring Walk



MLS22 Summer Walk



MLS23 Autumn Walk



MLS24 Winter Walk

Flower Panels

Designed by Rose Swalwell, and worked on pastel shades of 14 count Aida
(28 count Cashel linen available on request). Threads are pre-sorted and carded.



FP01

Delphiniums

31cm x 50.5cm (12.25" x 19.75")



FP02

Foxgloves

31cm x 50.5cm (12.25" x 19.75")



FP04

Hydrangea -

Lace Cap & Mop Heads

31cm x 50.5cm (12.25" x 19.75")



FP05 Summer Wild Flowers

41cm x 33cm (16.2" x 12.9")



FP06 Spring Wild Flowers

41cm x 33cm (16.2" x 12.9")

Impressions

Counted canvas work designs. A range by Rose Swalwell, worked with stranded cotton on 22 count canvas using petit point and long stitch. Size 11cm x 11cm (4.25" x 4.25")



IM404 Blackberry



IM405 Rowan



IM406 Blackthorn
& Bittersweet



IM407 Holly & Mistletoe



IM408 Rose Hips
& Bryony



IM409 Hawthorn
& Crab Apple



IM301 Spring Orchard



IM302 Summer Meadow



IM303 Autumn Oaks



IM304 Winter Evergreens

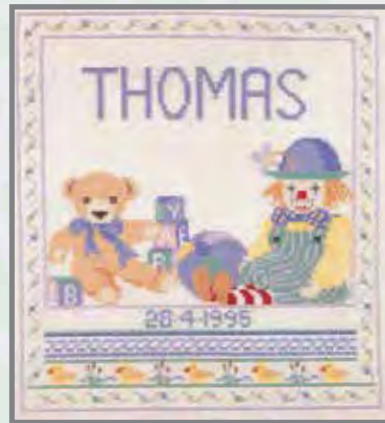
Samplers

A range of counted cross stitch designs.



SAMR01 Friends Sampler

26cm x 19cm (10.25" x 7.5") 14 count Aida



One kit containing threads to work for either a boy or a girl.

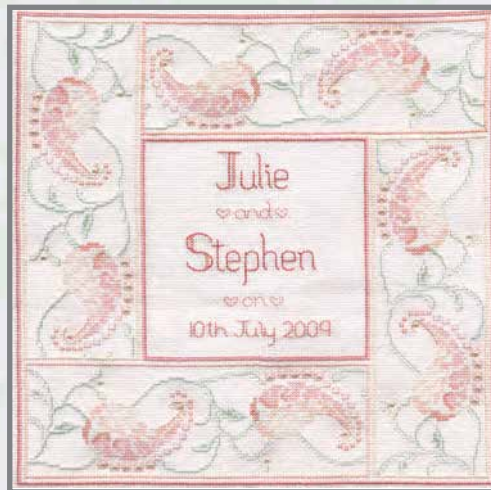
SAM02

Birth Sampler

17.5cm x 19.5cm

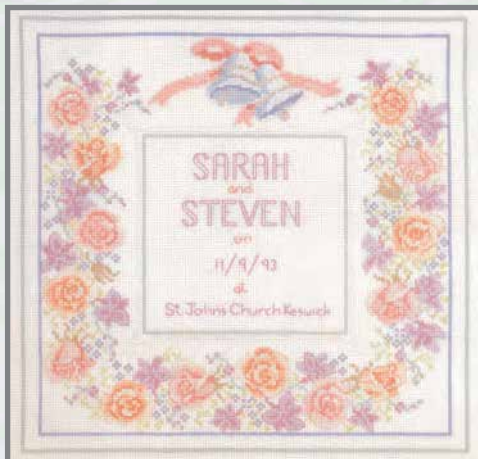
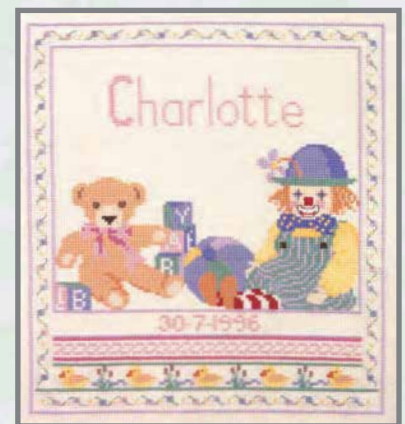
(5.5" x 7.75")

18 count Aida



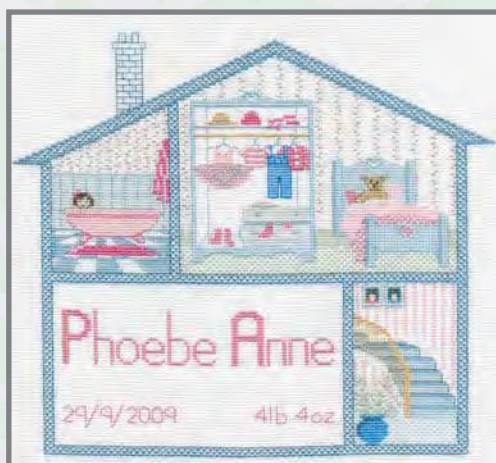
SAM06 Marriage Sampler

28.6cm x 28.6cm (12.25" x 12.25") 14 count Aida



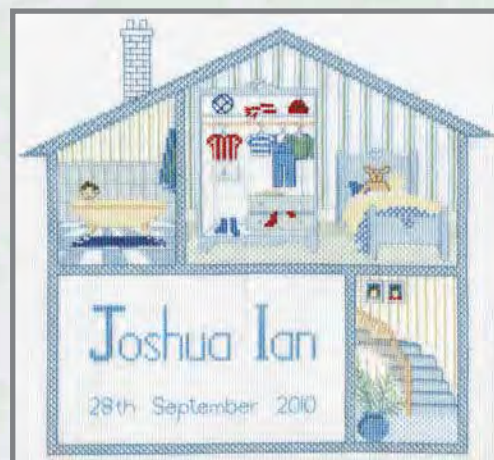
SAM03 Wedding Sampler

23cm x 23cm (9" x 9") 18 count Aida



SAM04 Baby Girl

28cm x 24.5cm (11" x 9.6") 14 count Aida

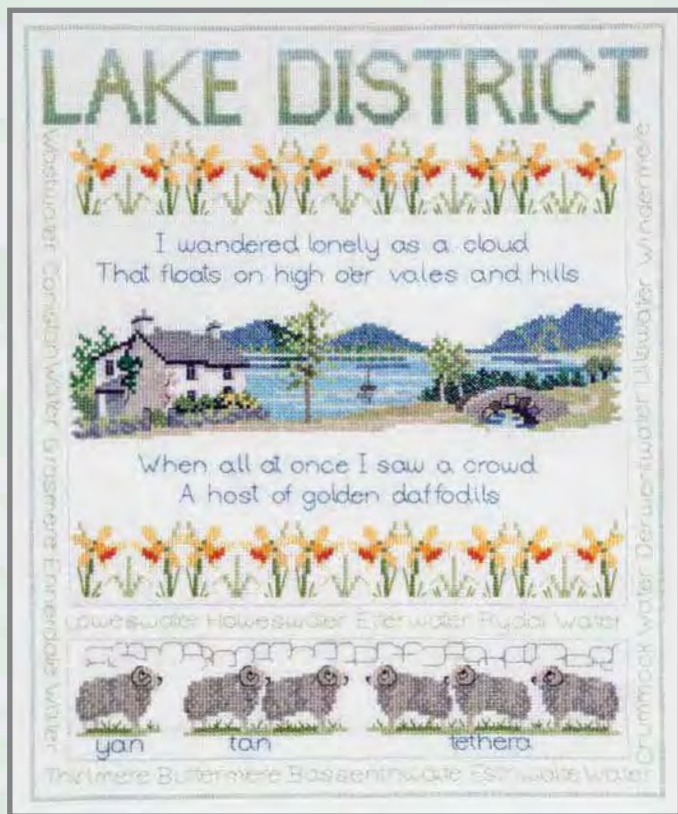


SAM05 Baby Boy

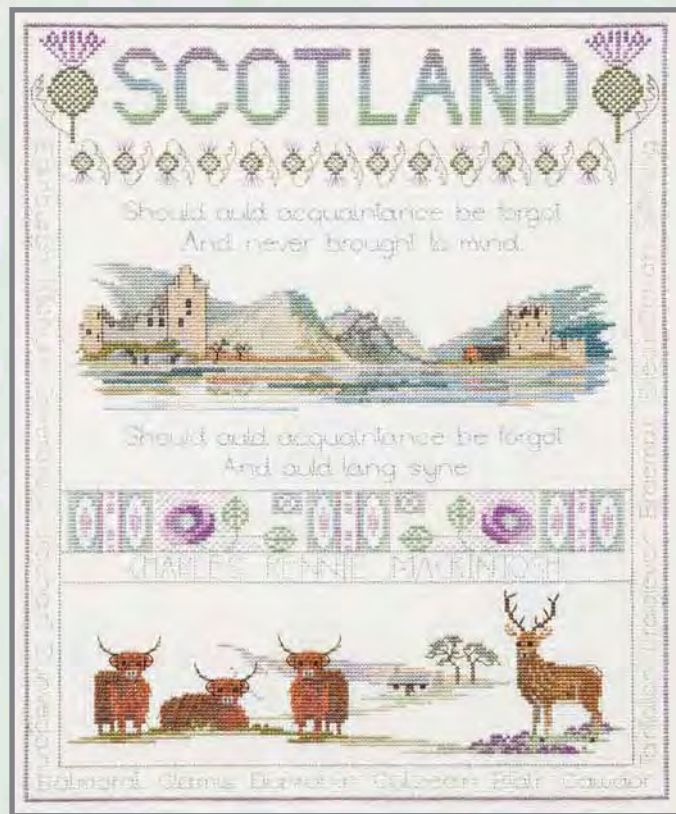
28cm x 24.5cm (11" x 9.6") 14 count Aida

Regional Samplers

Cross stitch designs by Rose Swalwell. All threads are pre-sorted and carded.



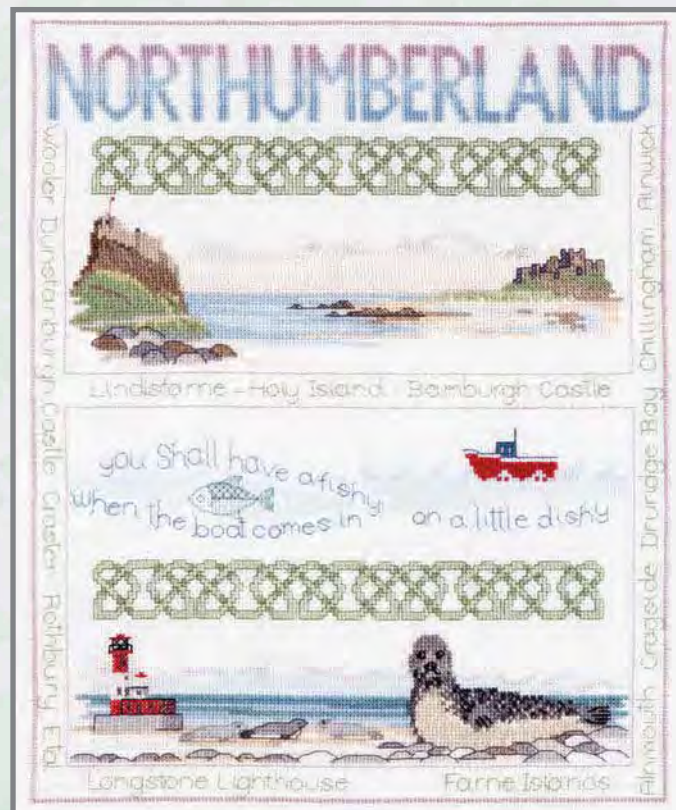
RSLD Lake District
30.3cm x 36.8cm (11.9" x 14.5")
14 count Aida



RSS Scotland
30.3cm x 36.8cm (11.9" x 14.5")
14 count Aida



QSCL Country Life Sampler
22cm x 29.5cm (8.75" x 11.5")
16 count Aida



RSN Northumberland
30.3cm x 36.8cm (11.9" x 14.5")
14 count Aida

Minuets

A range of miniature designs on blue vintage or lilac 14 count Aida
(28 count Cashel linen available on request). 10cm x 10cm (4" x 4") approx.



MIN01
Headland



MIN02
Fishing Boat



MIN03
Harbour



MIN04
Quayside



MIN05
Rose Cottage



MIN06
Orchard Cottage



MIN07
Brookside



MIN08
Poppyfield



MIN09
Frosty Trees



MIN10
Rowing Boat



MIN11
Sailing Boat



MIN12
Bridge



MIN13
Leaves and Rose



MIN14
Rose



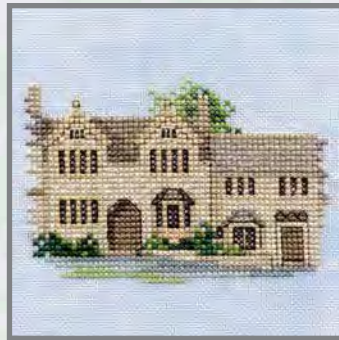
MIN15
Rose Aurora



MIN16
Two Love Birds



MIN17
Bourton on the Water



MIN18
Burford



MIN19
Arlington Row



MIN20
Lower Slaughter



MIN21
Waterside Castle



MIN22
East Coast Harbour



MIN23
Highland Croft



MIN24
Twilight Castle

Florals

A range of miniature floral designs by Rose Swalwell. All worked on 16 count Aida.
Size 10.5cm x 10.5cm (4" x 4").



FLR01 Anemones



FLR02 Bluebells



FLR03 Daffodils



FLR04 Pink Daisies



FLR05 Begonias



FLR06 Geraniums



FLR07 Pansies



FLR08 Sweetpea

Dale Designs

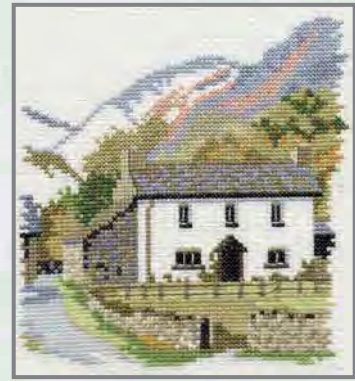
A range of designs by Rose Swalwell. Available on 14 count Aida.



14DD101 *Ashness Bridge*
14cm x 14cm (5.7" x 5.7")



14DD102 *Bridge House, Ambleside*
13.5cm x 16.3cm (5.3" x 6.3")



14DD106 *Yew Tree Farm*
14.5cm x 15.5cm (5.5" x 6")



14DD107 *Dove Cottage*
12.5cm x 13.5cm (5" x 5.3")



14DD109 *Friars Crag*
16.5cm x 12.1cm (6.5" x 4.8")



14DD110 *Grange in Borrowdale*
18cm x 11cm (7" x 4.4")



14DD201 *Betty's Cottage*
18cm x 12.5cm (7" x 5")



14DD202 *Herefordshire Cottage*
15.5cm x 14cm (6" x 5.5")



14DD203 *Cornish Cottage*
15cm x 15cm (6" x 6")



14DD204

Anne Hathaway's Cottage
18.5cm x 17.5cm (7.3" x 6.9")



14DD212 *Shakespeare's Birthplace*
18cm x 12.5cm (7" x 5")



14DD214 *Mill Cottage*
14.5cm x 16.5cm (5.75" x 6.5")



14DD218
Thornton Le Dale Cottage
18cm x 13cm (7" x 5")



14DD223
Bronte Parsonage, Haworth
18cm x 15cm (7" x 6")



14DD227 *Midsummer Thatch*
18cm x 12.5cm (7.1" x 5")



14DD226 *Bourton on the Water*
20cm x 13cm (7.9" x 5.1")



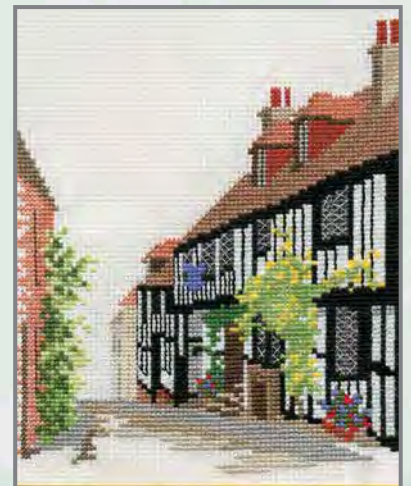
14DD301 *Edinburgh Castle*
17cm x 15cm (6.8" x 6")



14DD403 *Shambles*
16.5cm x 21cm (6.5" x 8.2")



14DD302 *Eilean Donan Castle*
19.5cm x 13cm (7.75" x 5")



14DD502 *Mermaid, Rye*
15cm x 18cm (6" x 7")

Village England

Designed by Rose Swalwell. These counted cross stitch kits are compilations of various buildings in that county.
On 14 count Aida (18 count Aida available on request). All threads are pre-sorted and carded.



14VE02 Cumbrian Village
40cm x 23cm (15.7" x 9")



14VE04 Cotswold Village
38cm x 21cm (15" x 8.3")



14VE07 Norfolk Village
41cm x 27.5cm (16" x 10.9")



14VE09 Willow Tree Cottages
43cm x 18cm (17.1" x 7.1")



14VE16 Yorkshire Village
40cm x 23cm (15.7" x 9")



14VE18 Derbyshire Village
40cm x 23cm (15.7" x 9")



14VE19 Hampshire Village
40cm x 23cm (15.7" x 9")



14VE20 Rose Tree Cottage
38cm x 21cm (15" x 8.3")



14VE21 Warwickshire Village
38.8cm x 27.8cm (15.3" x 10.9")



14VE22 Wiltshire Village
39.4cm x 25.8cm (15.5" x 10.1")

Coastal Britain

A range of designs by Rose Swalwell, inspired by the sea. On 14 count Aida.
All threads are pre-sorted and carded.



SEA01 *Morning Light*
36cm x 19.5cm (14" x 7.75")



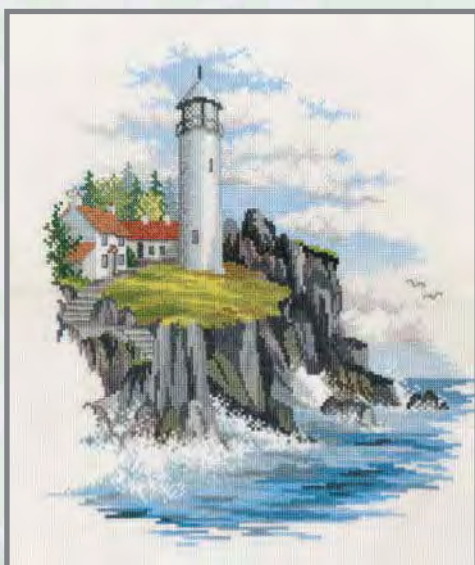
SEA02 *Fisherman's Haven*
36cm x 19.5cm (14" x 7.75")



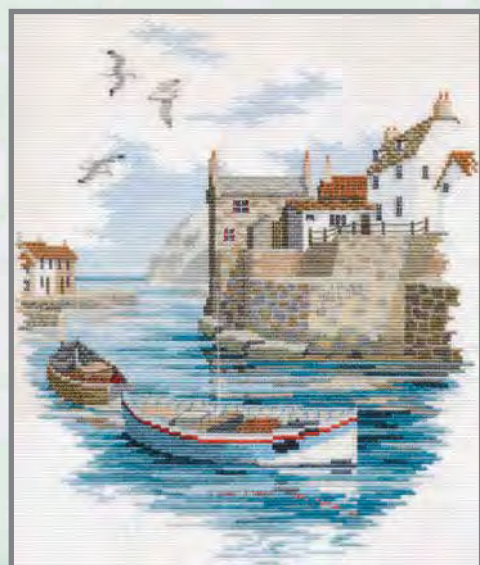
SEA03 *Fish Quay*
31cm x 28cm (12" x 11")



SEA04 *Fishing Village*
31cm x 28cm (12" x 11")



SEA05 *Storm Point*
29.5cm x 30cm (11.6" x 11.8")



SEA06 *Secluded Port*
29.5cm x 30cm (11.6" x 11.8")

Long Stitch

A range of long stitch kits
using tapestry wool on 14 count printed canvas.



LSPY Peony
21.5cm x 20.5cm (8.5" x 8")



LSPH Poppy Head
21.5cm x 20.5cm (8.5" x 8")



LSWP White Poppy
21.5cm x 20.5cm (8.5" x 8")



LSFP Field Poppies
10cm x 24cm (4" x 9.5")

A long stitch kit
using stranded cotton on
22 count printed canvas.



SD17 Kingfisher
15cm x 20.4cm (6" x 8")

Butterfly Collection

Panel

Coasters

Each kit contains everything you need to make two coasters.



COA9
Painted Lady/Peacock
Coasters
9.5cm x 9.5cm (3.75" x 3.75")
16 count Aida



COA10
Red Admiral/Tortoiseshell
Coasters
9.5cm x 9.5cm (3.75" x 3.75")
16 count Aida

BUT1
Butterfly Panel
11cm x 39cm (4.25" x 15.25")
14 count Aida

Coasters

Each kit contains two designs and includes the coasters, the size of which is 9.5cm x 9.5cm (3.75" x 3.75").
Worked on 16 count Aida.



COA1 Blackberry and Blackthorn



COA2 Rose hips and Rowan



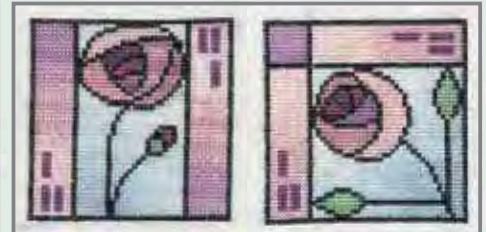
COA3 Holly and Hawthorn



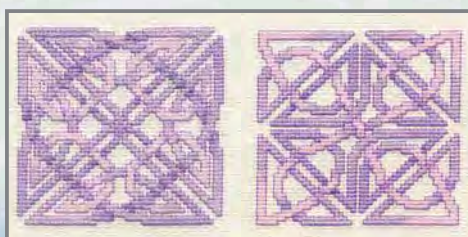
COA4 Mackintosh Coasters 1



COA5 Mackintosh Coasters 2



COA6 Mackintosh Coasters 3



COA7 Celtic Amethyst



COA8 Celtic Aquamarine

Christmas Cards

A range of cards by Rose Swalwell on 16 count Aida to fit a 9cm x 13.3cm oval. The card and envelope are included.



CDX03
Snow Robin



CDX04
The Church



CDX05
Bethlehem



CDX07
Christmas Door



CDX01
Christmas Rose



CDX02
Poinsettias



CDX08
Christmas Window



CDX09
Fireplace



CDX10
Village



CDX12
Three Kings



CDX06
Midwinter



CDX13
Festive Tree



CDX14
International Tree



CDX16
Shepherd



CDX18
Holly & Robin



CDX19
Noel



CDX22
The Holly and the Ivy



CDX20
Penguin



CDX21
Away in a Manger



CDX23
Candle



CDX24
Snowman



CDX28
Ding Dong



CDX25
Lantern



CDX26
Christmas
Cottage



CDX27
Wreath



CDX29
Stained Glass
Window



CDX30
Posh Presents



CDX31
Poinsettia and Holly



CDX32
Holly Tree



CDX33
Santa's Sack



CDX34
Warm Welcome



CDX36
Fruit
with Candle



CDX39
Midnight
Mass



CDX40
Christmas
Stockings



CDX41
Robin Trio



CDX42
Season's
Greetings



CDX43
Peace on Earth



CDX44
Evening Snowfall



CDX45
Christmas Cheer



CDX46
Christmas Post



CDX47
Golden Wreath



CDX48
Christmas Cat

Christmas Cards

A range of cards by Rose Swalwell on 16 count Aida to fit a 9cm x 13.3cm oval.
The card and envelope are included.



CDX49
Christmas
Teddy Bear



CDX50
Carol Singers



CDX51
Snowdrops



CDX52
Partridge
in a Pear Tree



CDX54
Snowflake
Tree



CDX55
Christmas
Delivery



CDX56
Deer in
a Snowstorm



CDX53
Noel Robin



CDX57
Let it Snow

Long Stitch Cards

A range of cards by Jean Coates, in stranded cotton, on 22 count canvas to fit a 9cm x 13.3cm oval.
The card and envelope are included.



CDG21
Happy Birthday



CDG22
Blue Poppy



CDG23
Miniature
Mackintosh



CDX37
Frosty
Snowman



CDX38
Holly Leaves

Greetings Cards

A range of cards by Rose Swalwell on 16 count Aida to fit a 9cm x 13.3cm oval. The card and envelope are included. Alphabet and numbers are included in the Congratulations, Champagne and Anniversary cards.

The baby card can be worked for either a boy or girl.



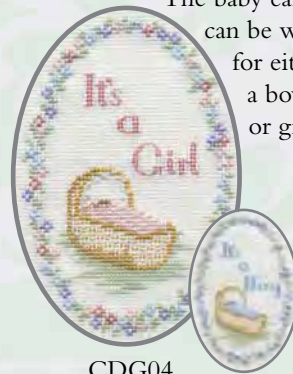
CDG01
Poppy



CDG02
Iris



CDG03
Congratulations



CDG04
Baby



CDG05
Red Rose



CDG07
Mackintosh Rose



CDG08
White Clematis



CDG09
Champagne



CDG11
Dragonfly Birthday



CDG12
Rose Champagne



CDG13
Wedding or
Anniversary Day



CDG14
Silver or Diamond
Wedding



CDG15
Ruby Wedding
or Valentine



CDG16
Golden
Anniversary



CDG17/CDG18
Baby Boy/
Baby Girl



CDG19
Boy's Birthday
1,2 or 3 years



CDG20
Girl's Birthday
1,2 or 3 years



CDG24
Butterfly
& Daisies

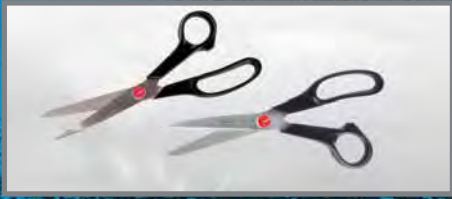


CDG25
Happy Occasions

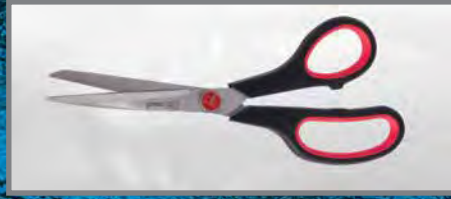


CDG26
Violets

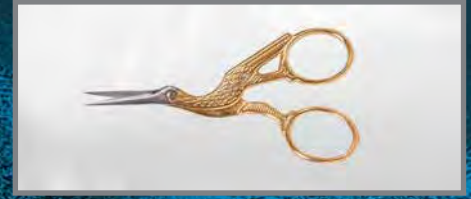
Bexfield Range of Shears - Excel Edge



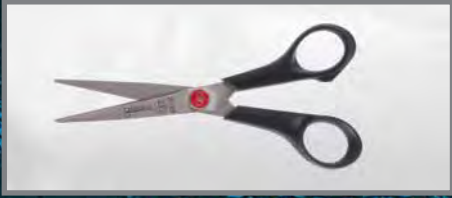
A20 - 8.5" Multipurpose
A20L - 8.5" Multipurpose left Handed



A30 - 8.5" Multipurpose



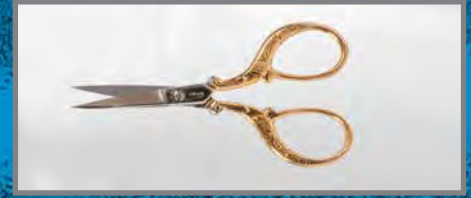
S9350 - 3.5" Stork Embroidery



A24 - 5.5" Hobby Craft



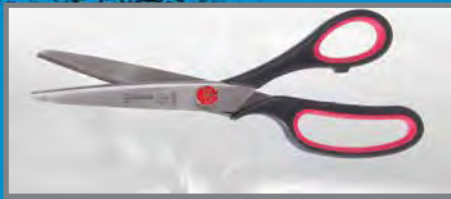
A26 - 8.5" Kitchen Shears



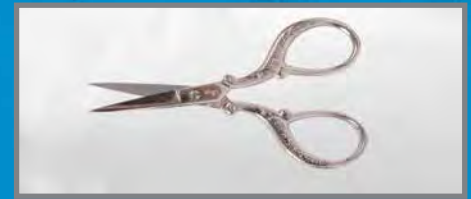
S9351 - 3.5" Floral Embroidery Gilt Bow



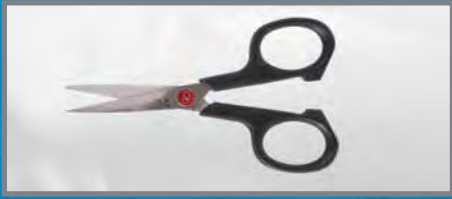
A25 - 8.25" Pinking Shears



A35 8.5" Pinking Shears Cushion Soft Bow



S9352 - 3.5" Floral Embroidery Plain Bow



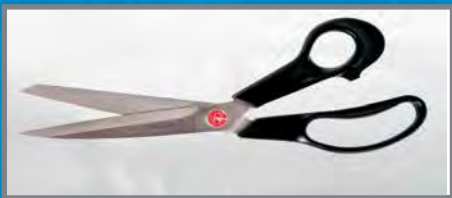
A28 - 4.25" Embroidery



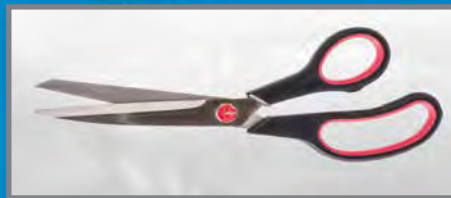
A38 - 4.25" Embroidery Cushion Soft Bow



S9543 - 3.5" Embroidery Gilt Bow



A29 - 9.5" Dressmaking Shears



A39 - 9.5" Dressmaking Cushion Soft Bow



S9544 - 3.5" Embroidery Antique Bow



S360 - Lace



S381 - 3.5" Embroidery Wide Green Bow



S382 - 3.5" Embroidery Wide Green Bow Curved Point



S355 - 3.5" Hardanger



S373 - 3.5" Machine Embroidery



805C - Thread Snips sold in a strip of 12